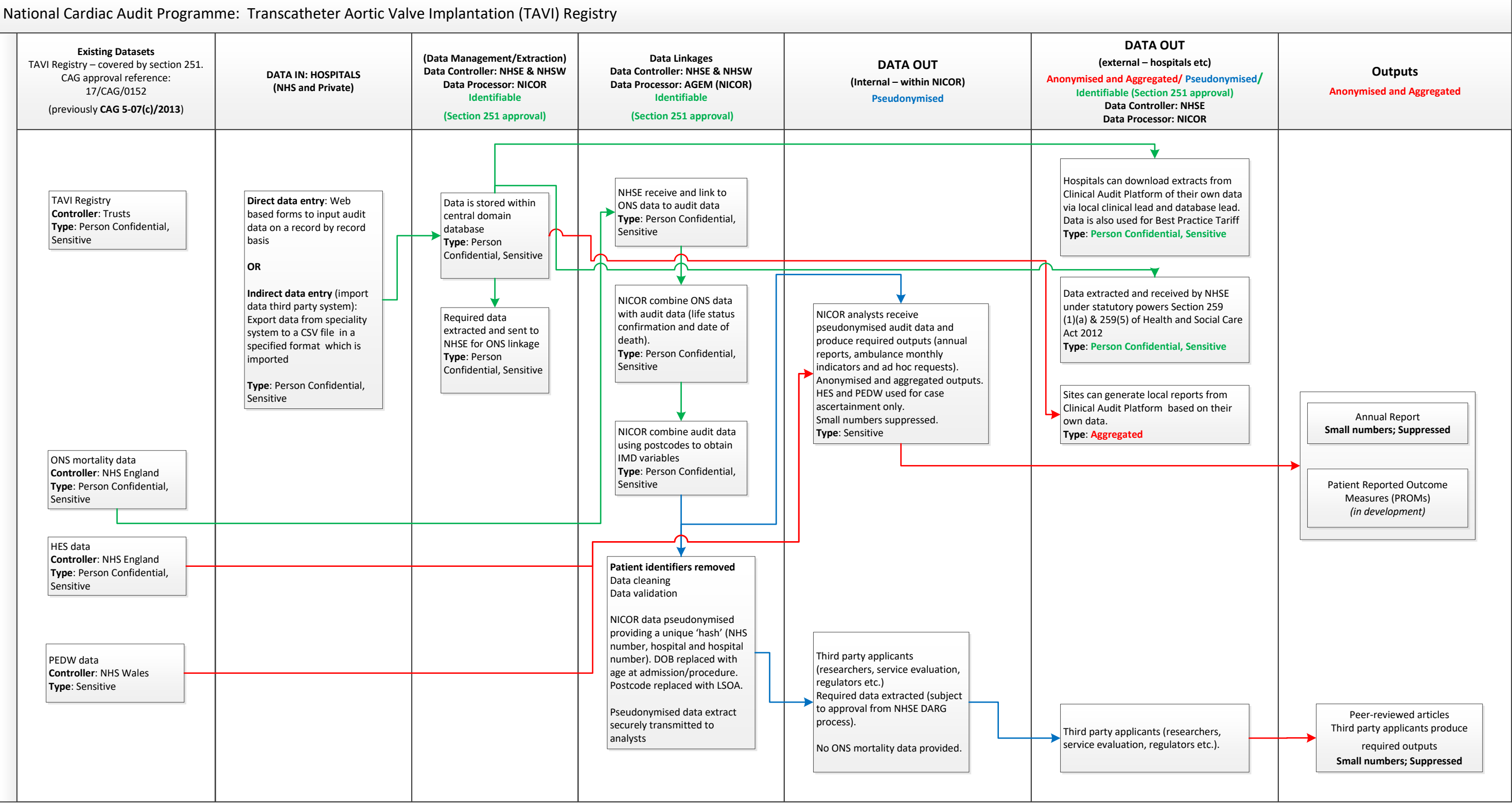


NOTES
Green = Identifiable (Section 251 approval) - legal basis for confidential data flow
Blue = Pseudonymised
Red = Anonymised and Aggregated
Italics = Future data linkage

ONS: Office for National Statistics (*mortality data*)
HES: Hospital Episode Statistics
PEDW: Patient Episode Database for Wales
NHSE: NHS England
NHSW: NHS Wales
AGEM: NHS Arden & GEM

The only data permitted to flow to third parties will be aggregated with small numbers suppressed.
Any changes to this would be subject to a separate application to NHS Digital.



Existing Datasets
TAVI Registry – covered by section 251. CAG approval reference: 17/CAG/0152 (previously CAG 5-07(c)/2013)