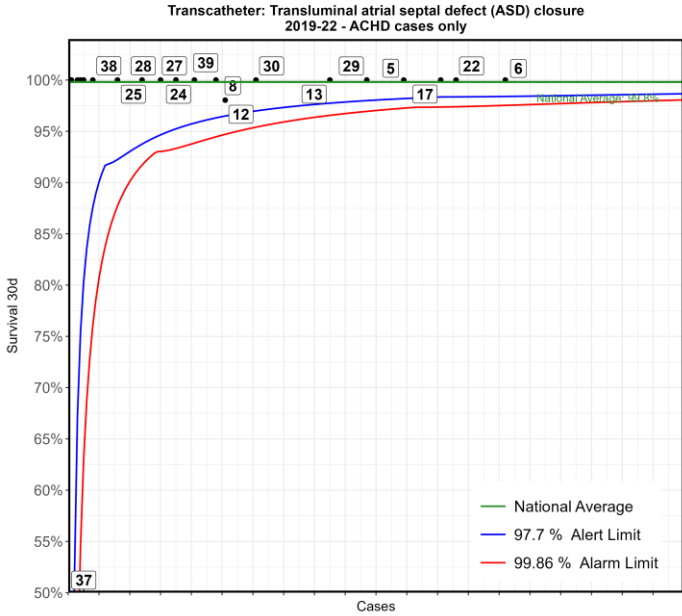
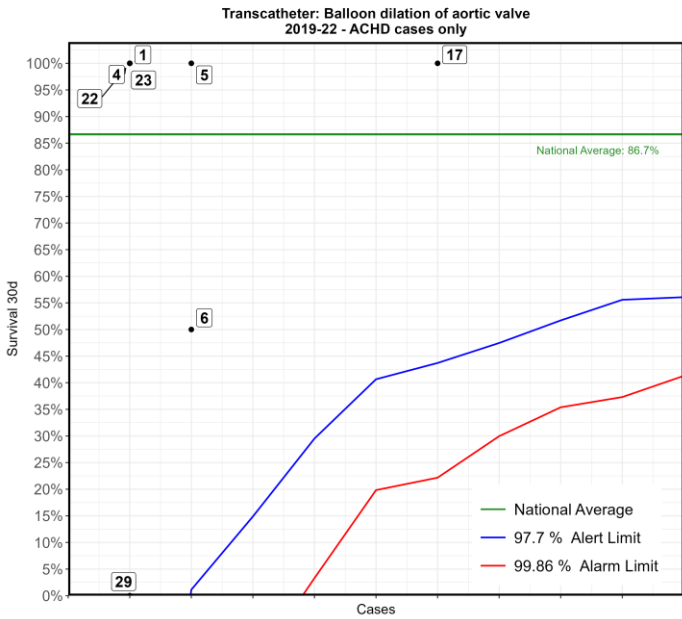




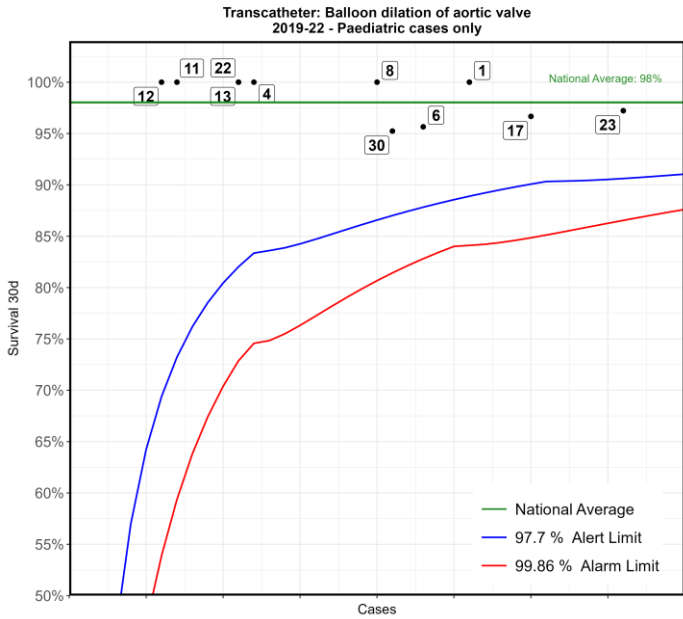
NCHDA Transcatheter (all) 2019-22



No	Hospital Name	Survival 30d
6	Bristol Royal Hospital For Children	100%
22	London Royal Brompton Hospital	100%
17	Leeds General Infirmary	100%
5	Liverpool Heart and Chest Hospital	100%
29	London Barts Heart Centre	100%
13	London Evelina London Children's Hospital	100%
30	Southampton Wessex Cardiothoracic Centre	100%
12	Leicester Glenfield Hospital	98%
8	Newcastle Freeman Hospital	100%
39	Papworth Hospital	100%
24	Birmingham Queen Elizabeth Hospital	100%
27	Brighton Royal Sussex County Hospital	100%
28	Belfast Royal Victoria Hospital	100%
25	Oxford John Radcliffe Hospital	100%
38	Spire Bristol Hospital	100%
33	Stoke University Hospital of North Staffordshire	100%
1	Liverpool Alder Hey Hospital	100%
23	Dublin Our Lady's Children's Hospital	100%
4	Birmingham Children's Hospital	100%
11	London Great Ormond Street Hospital for Children	100%
19	Manchester Royal Infirmary	100%
36	Cardiff University Hospital of Wales	100%
37	Blackpool Victoria Hospital	0%

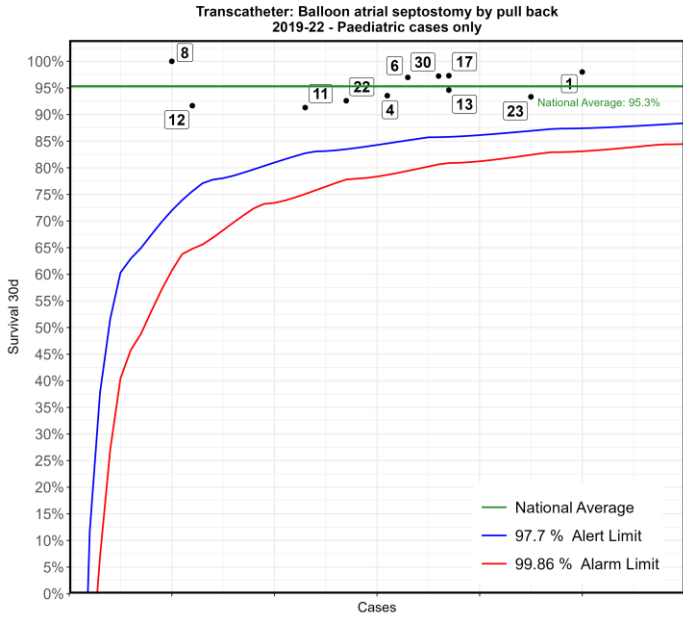


No	Hospital Name	Survival 30d
17	Leeds General Infirmary	100%
5	Liverpool Heart and Chest Hospital	100%
6	Bristol Royal Hospital For Children	50%
1	Liverpool Alder Hey Hospital	100%
4	Birmingham Children's Hospital	100%
22	London Royal Brompton Hospital	100%
23	Dublin Our Lady's Children's Hospital	100%
29	London Barts Heart Centre	0%



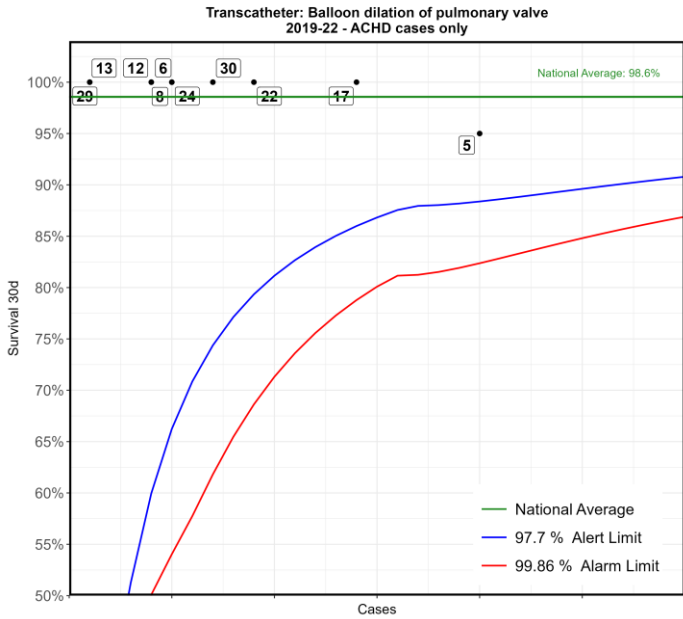
No	Hospital Name	Survival 30d
23	Dublin Our Lady's Children's Hospital	97%
*17	Leeds General Infirmary	97%
1	Liverpool Alder Hey Hospital	100%
*6	Bristol Royal Hospital For Children	96%
*30	Southampton Wessex Cardiothoracic Centre	95%
**8	Newcastle Freeman Hospital	100%
4	Birmingham Children's Hospital	100%
13	London Evelina London Children's Hospital	100%
22	London Royal Brompton Hospital	100%
11	London Great Ormond Street Hospital for Children	100%
12	Leicester Glenfield Hospital	100%

*This Funnel plot includes 1 patient(s) at least from this centre who had 2 procedures within the same 30 day time period. The procedure for this patient has only been counted once in this display with respect to life status for statistical reasons to ensure the patient is not counted as alive or deceased twice over.

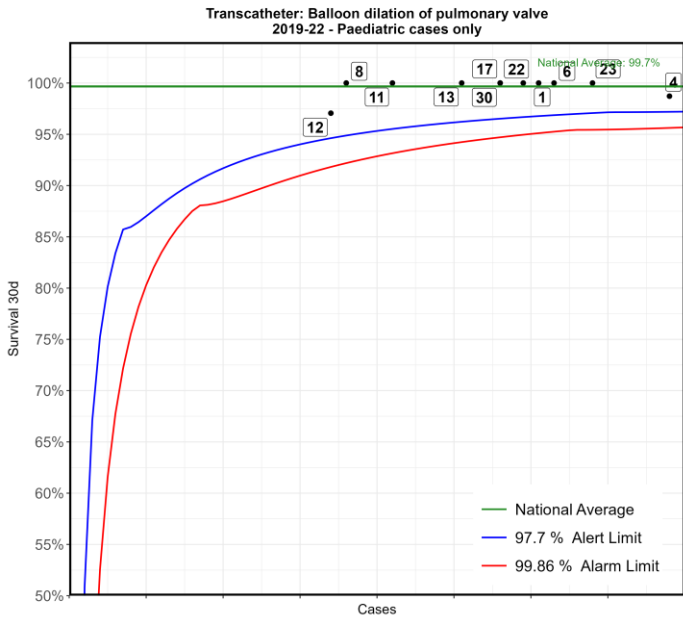


No	Hospital Name	Survival 30d
1	Liverpool Alder Hey Hospital	98%
23	Dublin Our Lady's Children's Hospital	93%
13	London Evelina London Children's Hospital	95%
**17	Leeds General Infirmary	97%
30	Southampton Wessex Cardiothoracic Centre	97%
6	Bristol Royal Hospital For Children	97%
4	Birmingham Children's Hospital	94%
22	London Royal Brompton Hospital	93%
11	London Great Ormond Street Hospital for Children	91%
12	Leicester Glenfield Hospital	92%
8	Newcastle Freeman Hospital	100%

*This Funnel plot includes 1 patient(s) at least from this centre who had 2 procedures within the same 30 day time period. The procedure for this patient has only been counted once in this display with respect to life status for statistical reasons to ensure the patient is not counted as alive or deceased twice over.

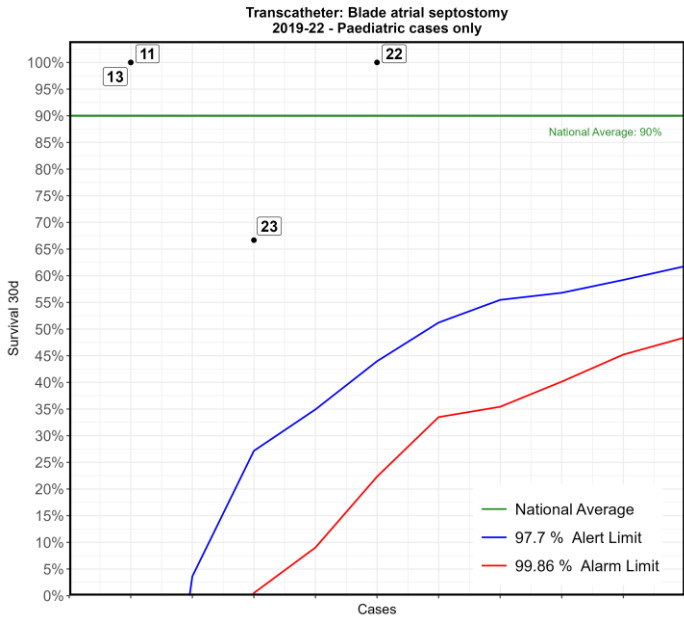


No	Hospital Name	Survival 30d
5	Liverpool Heart and Chest Hospital	95%
17	Leeds General Infirmary	100%
22	London Royal Brompton Hospital	100%
30	Southampton Wessex Cardiothoracic Centre	100%
6	Bristol Royal Hospital For Children	100%
24	Birmingham Queen Elizabeth Hospital	100%
8	Newcastle Freeman Hospital	100%
12	Leicester Glenfield Hospital	100%
13	London Evelina London Children's Hospital	100%
29	London Barts Heart Centre	100%

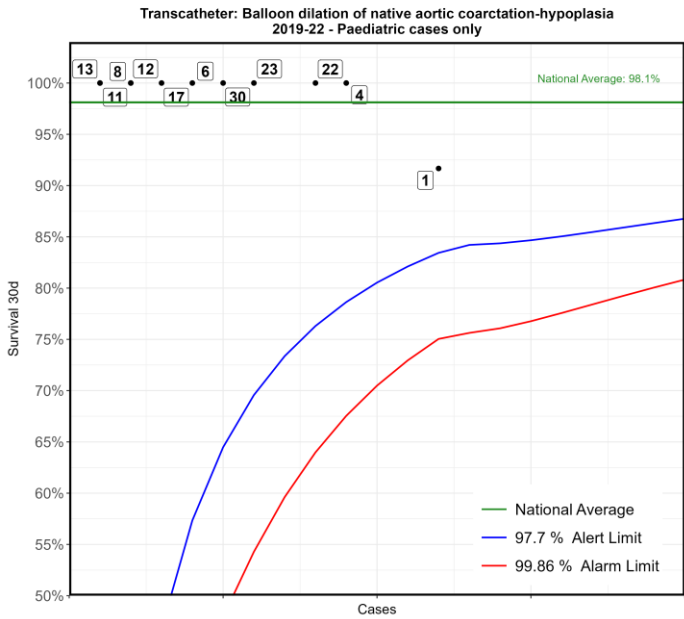


No	Hospital Name	Survival 30d
*4	Birmingham Children's Hospital	99%
23	Dublin Our Lady's Children's Hospital	100%
6	Bristol Royal Hospital For Children	100%
1	Liverpool Alder Hey Hospital	100%
*22	London Royal Brompton Hospital	100%
17	Leeds General Infirmary	100%
30	Southampton Wessex Cardiothoracic Centre	100%
***13	London Evelina London Children's Hospital	100%
11	London Great Ormond Street Hospital for Children	100%
8	Newcastle Freeman Hospital	100%
12	Leicester Glenfield Hospital	97%

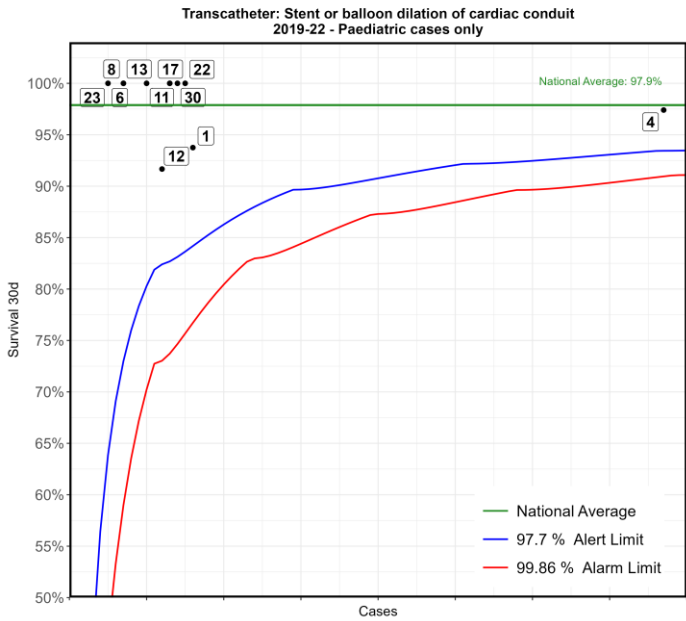
*This Funnel plot includes 1 patient(s) at least from this centre who had 2 procedures within the same 30 day time period. The procedure for this patient has only been counted once in this display with respect to life status for statistical reasons to ensure the patient is not counted as alive or deceased twice over.



No	Hospital Name	Survival 30d
22	London Royal Brompton Hospital	100%
23	Dublin Our Lady's Children's Hospital	67%
11	London Great Ormond Street Hospital for Children	100%
13	London Evelina London Children's Hospital	100%

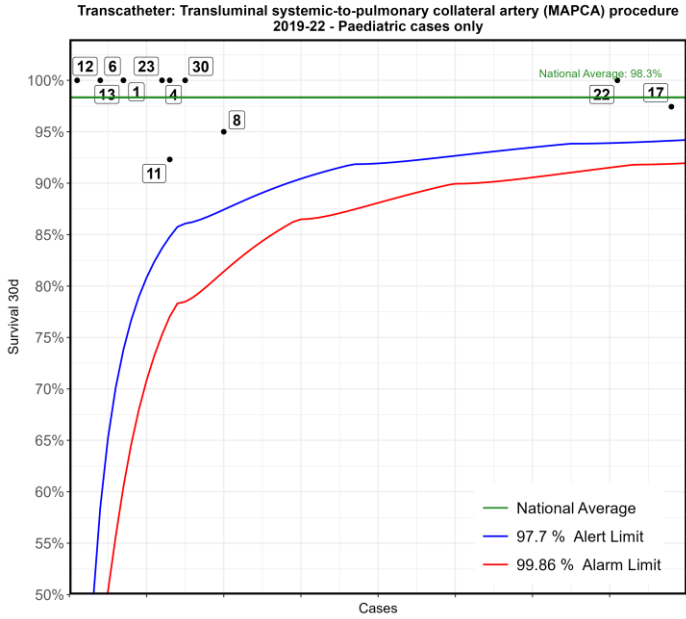


No	Hospital Name	Survival 30d
1	Liverpool Alder Hey Hospital	92%
4	Birmingham Children's Hospital	100%
22	London Royal Brompton Hospital	100%
23	Dublin Our Lady's Children's Hospital	100%
30	Southampton Wessex Cardiothoracic Centre	100%
6	Bristol Royal Hospital For Children	100%
17	Leeds General Infirmary	100%
8	Newcastle Freeman Hospital	100%
12	Leicester Glenfield Hospital	100%
11	London Great Ormond Street Hospital for Children	100%
13	London Evelina London Children's Hospital	100%



No	Hospital Name	Survival 30d
*4	Birmingham Children's Hospital	97%
*1	Liverpool Alder Hey Hospital	94%
22	London Royal Brompton Hospital	100%
30	Southampton Wessex Cardiothoracic Centre	100%
11	London Great Ormond Street Hospital for Children	100%
17	Leeds General Infirmary	100%
12	Leicester Glenfield Hospital	92%
13	London Evelina London Children's Hospital	100%
6	Bristol Royal Hospital For Children	100%
8	Newcastle Freeman Hospital	100%
23	Dublin Our Lady's Children's Hospital	100%

*This Funnel plot includes 1 patient(s) at least from this centre who had 2 procedures within the same 30 day time period. The procedure for this patient has only been counted once in this display with respect to life status for statistical reasons to ensure the patient is not counted as alive or deceased twice over.

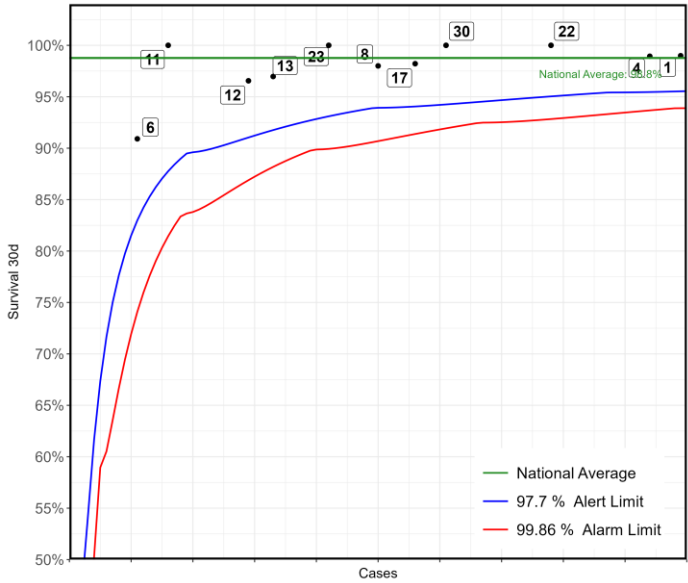


No	Hospital Name	Survival 30d
*17	Leeds General Infirmary	97%
*22	London Royal Brompton Hospital	100%
8	Newcastle Freeman Hospital	95%
30	Southampton Wessex Cardiothoracic Centre	100%
4	Birmingham Children's Hospital	100%
*11	London Great Ormond Street Hospital for Children	92%
23	Dublin Our Lady's Children's Hospital	100%
1	Liverpool Alder Hey Hospital	100%
6	Bristol Royal Hospital For Children	100%
13	London Evelina London Children's Hospital	100%
12	Leicester Glenfield Hospital	100%

*This Funnel plot includes 1 patient(s) at least from this centre who had 2 procedures within the same 30 day time period. The procedure for this patient has only been counted once in this display with respect to life status for statistical reasons to ensure the patient is not counted as alive or deceased twice over.



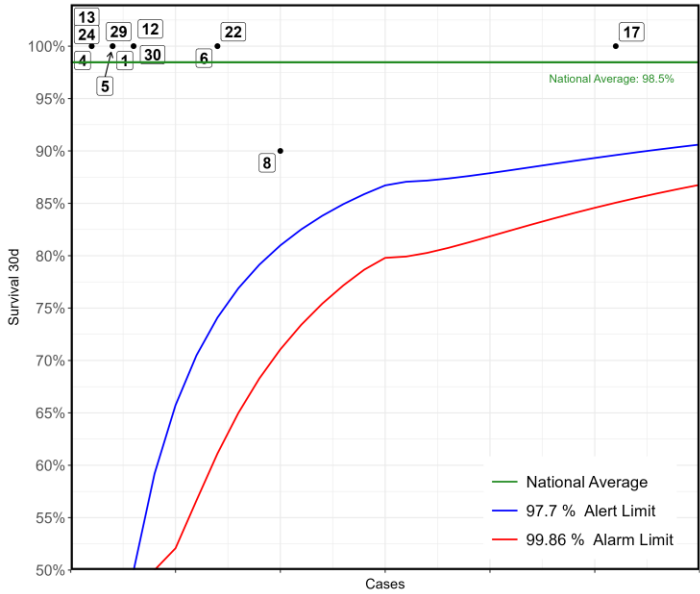
**Transcatheter: Balloon dilation of pulmonary artery
2019-22 - Paediatric cases only**



No	Hospital Name	Survival 30d
1	Liverpool Alder Hey Hospital	99%
*4	Birmingham Children's Hospital	99%
*22	London Royal Brompton Hospital	100%
30	Southampton Wessex Cardiothoracic Centre	100%
17	Leeds General Infirmary	98%
*8	Newcastle Freeman Hospital	98%
23	Dublin Our Lady's Children's Hospital	100%
13	London Evelina London Children's Hospital	97%
12	Leicester Glenfield Hospital	97%
11	London Great Ormond Street Hospital for Children	100%
6	Bristol Royal Hospital For Children	91%

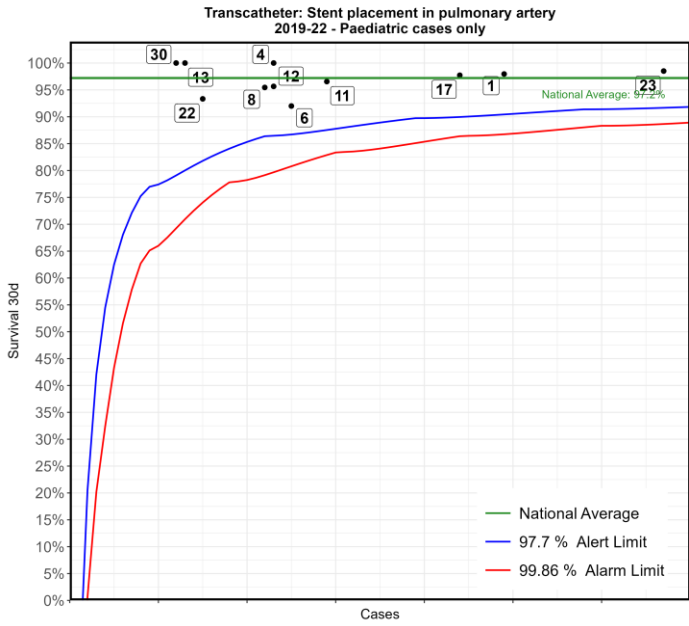
*This Funnel plot includes 1 patient(s) at least from this centre who had 2 procedures within the same 30 day time period. The procedure for this patient has only been counted once in this display with respect to life status for statistical reasons to ensure the patient is not counted as alive or deceased twice over.

**Transcatheter: Stent placement in pulmonary artery
2019-22 - ACHD cases only**



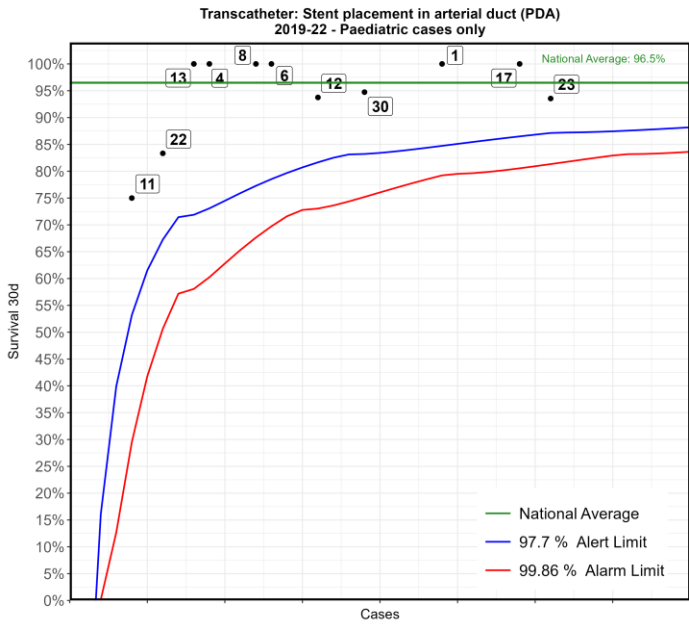
No	Hospital Name	Survival 30d
17	Leeds General Infirmary	100%
*8	Newcastle Freeman Hospital	90%
6	Bristol Royal Hospital For Children	100%
22	London Royal Brompton Hospital	100%
12	Leicester Glenfield Hospital	100%
30	Southampton Wessex Cardiothoracic Centre	100%
1	Liverpool Alder Hey Hospital	100%
5	Liverpool Heart and Chest Hospital	100%
29	London Barts Heart Centre	100%
4	Birmingham Children's Hospital	100%
13	London Evelina London Children's Hospital	100%
24	Birmingham Queen Elizabeth Hospital	100%

*This Funnel plot includes 1 patient(s) at least from this centre who had 2 procedures within the same 30 day time period. The procedure for this patient has only been counted once in this display with respect to life status for statistical reasons to ensure the patient is not counted as alive or deceased twice over.



No	Hospital Name	Survival 30d
*23	Dublin Our Lady's Children's Hospital	99%
1	Liverpool Alder Hey Hospital	98%
17	Leeds General Infirmary	98%
11	London Great Ormond Street Hospital for Children	97%
6	Bristol Royal Hospital For Children	92%
4	Birmingham Children's Hospital	100%
12	Leicester Glenfield Hospital	96%
8	Newcastle Freeman Hospital	95%
22	London Royal Brompton Hospital	93%
13	London Evelina London Children's Hospital	100%
30	Southampton Wessex Cardiothoracic Centre	100%

*This Funnel plot includes 1 patient(s) at least from this centre who had 2 procedures within the same 30 day time period. The procedure for this patient has only been counted once in this display with respect to life status for statistical reasons to ensure the patient is not counted as alive or deceased twice over.

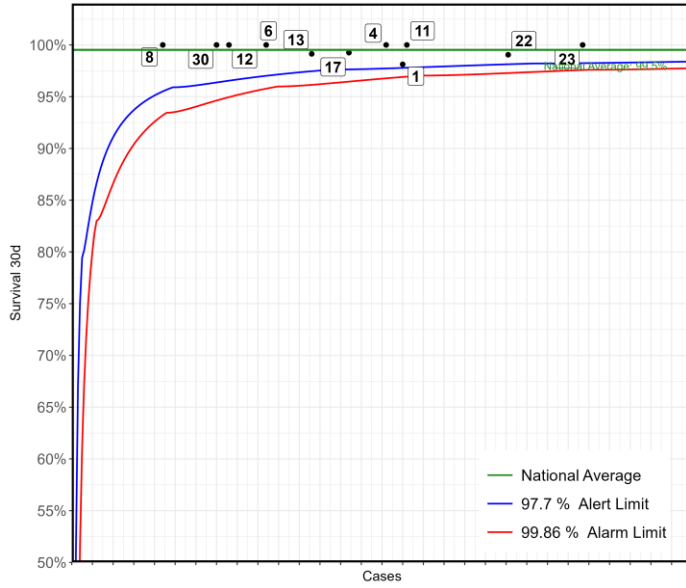


No	Hospital Name	Survival 30d
*23	Dublin Our Lady's Children's Hospital	94%
17	Leeds General Infirmary	100%
***1	Liverpool Alder Hey Hospital	100%
**30	Southampton Wessex Cardiothoracic Centre	95%
12	Leicester Glenfield Hospital	94%
6	Bristol Royal Hospital For Children	100%
**8	Newcastle Freeman Hospital	100%
*4	Birmingham Children's Hospital	100%
13	London Evelina London Children's Hospital	100%
22	London Royal Brompton Hospital	83%
11	London Great Ormond Street Hospital for Children	75%

*This Funnel plot includes 1 patient(s) at least from this centre who had 2 procedures within the same 30 day time period. The procedure for this patient has only been counted once in this display with respect to life status for statistical reasons to ensure the patient is not counted as alive or deceased twice over.



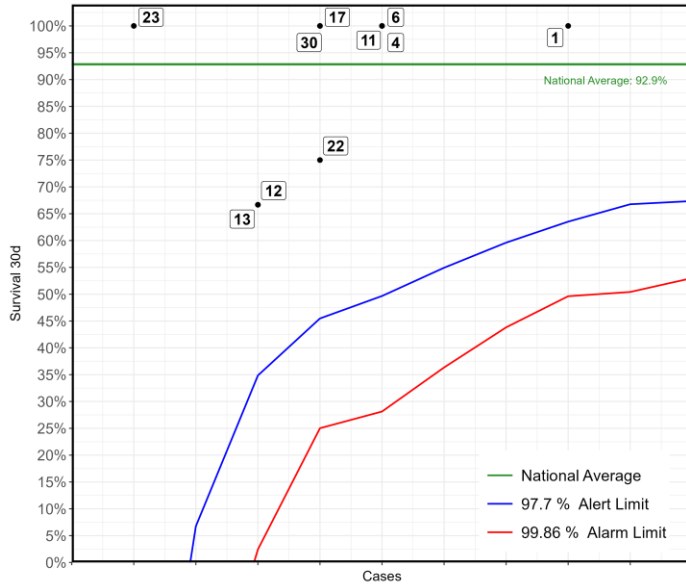
Transcatheter: Transluminal patent arterial duct (PDA) closure
2019-22 - Paediatric cases only



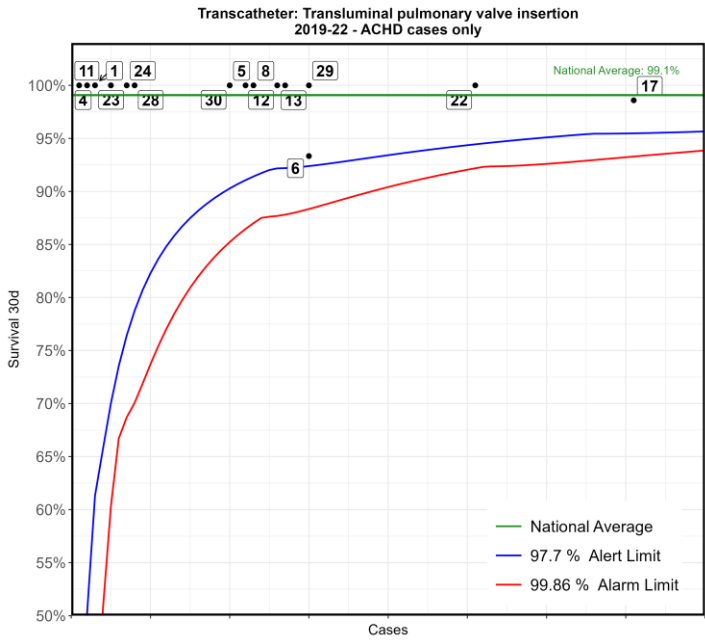
No	Hospital Name	Survival 30d
****23	Dublin Our Lady's Children's Hospital	100%
**22	London Royal Brompton Hospital	99%
*11	London Great Ormond Street Hospital for Children	100%
1	Liverpool Alder Hey Hospital	98%
*4	Birmingham Children's Hospital	100%
17	Leeds General Infirmary	99%
*13	London Evelina London Children's Hospital	99%
6	Bristol Royal Hospital For Children	100%
12	Leicester Glenfield Hospital	100%
***30	Southampton Wessex Cardiothoracic Centre	100%
8	Newcastle Freeman Hospital	100%

*This Funnel plot includes 1 patient(s) at least from this centre who had 2 procedures within the same 30 day time period. The procedure for this patient has only been counted once in this display with respect to life status for statistical reasons to ensure the patient is not counted as alive or deceased twice over.

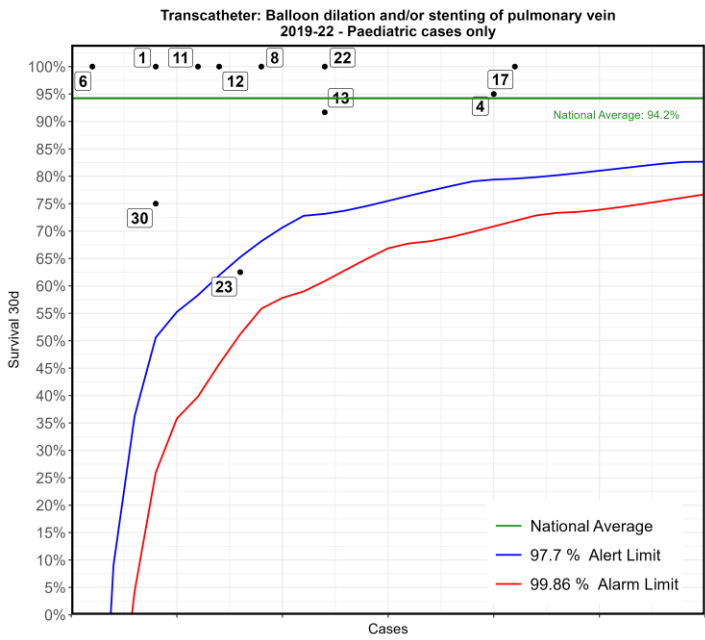
Transcatheter: Transluminal pulmonary valve perforation & dilation
2019-22 - Paediatric cases only



No	Hospital Name	Survival 30d
1	Liverpool Alder Hey Hospital	100%
4	Birmingham Children's Hospital	100%
6	Bristol Royal Hospital For Children	100%
11	London Great Ormond Street Hospital for Children	100%
17	Leeds General Infirmary	100%
22	London Royal Brompton Hospital	75%
30	Southampton Wessex Cardiothoracic Centre	100%
12	Leicester Glenfield Hospital	67%
13	London Evelina London Children's Hospital	67%
23	Dublin Our Lady's Children's Hospital	100%



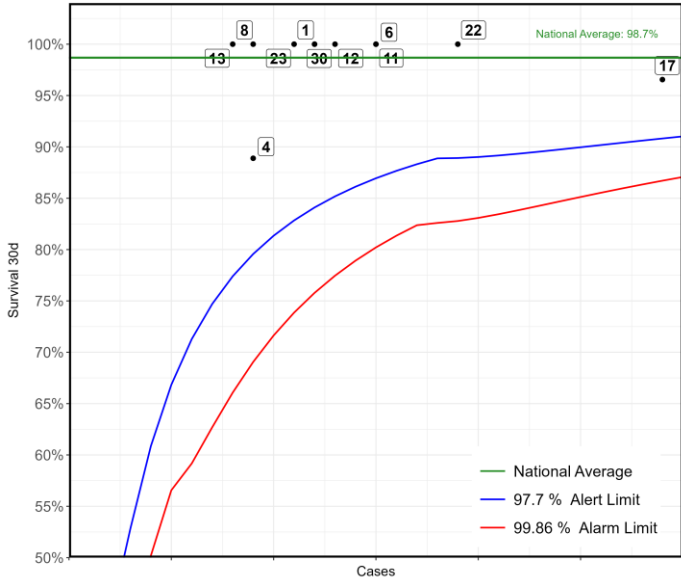
No	Hospital Name	Survival 30d
17	Leeds General Infirmary	99%
22	London Royal Brompton Hospital	100%
6	Bristol Royal Hospital For Children	93%
29	London Barts Heart Centre	100%
13	London Evelina London Children's Hospital	100%
8	Newcastle Freeman Hospital	100%
12	Leicester Glenfield Hospital	100%
5	Liverpool Heart and Chest Hospital	100%
30	Southampton Wessex Cardiothoracic Centre	100%
28	Belfast Royal Victoria Hospital	100%
24	Birmingham Queen Elizabeth Hospital	100%
23	Dublin Our Lady's Children's Hospital	100%
1	Liverpool Alder Hey Hospital	100%
4	Birmingham Children's Hospital	100%
11	London Great Ormond Street Hospital for Children	100%



No	Hospital Name	Survival 30d
17	Leeds General Infirmary	100%
4	Birmingham Children's Hospital	95%
13	London Evelina London Children's Hospital	92%
22	London Royal Brompton Hospital	100%
8	Newcastle Freeman Hospital	100%
23	Dublin Our Lady's Children's Hospital	63%
12	Leicester Glenfield Hospital	100%
11	London Great Ormond Street Hospital for Children	100%
1	Liverpool Alder Hey Hospital	100%
30	Southampton Wessex Cardiothoracic Centre	75%
6	Bristol Royal Hospital For Children	100%



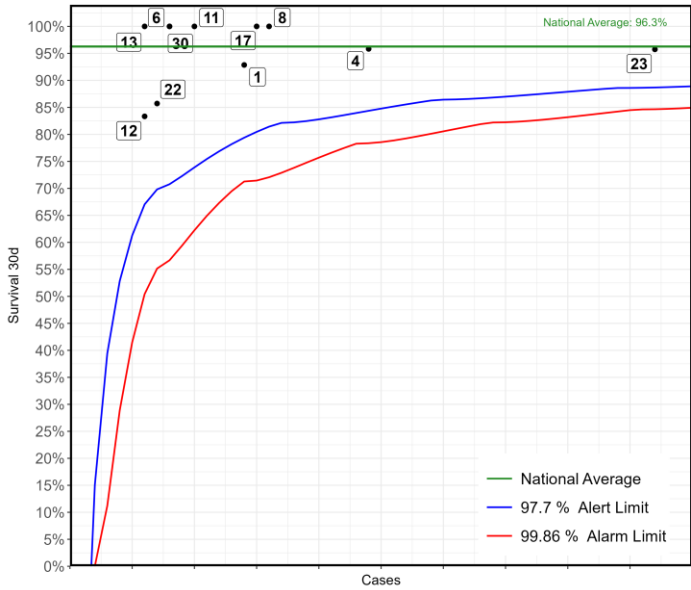
**Transcatheter: Balloon dilation of aortic re-coarctation
2019-22 - Paediatric cases only**



No	Hospital Name	Survival 30d
*17	Leeds General Infirmary	97%
**22	London Royal Brompton Hospital	100%
6	Bristol Royal Hospital For Children	100%
11	London Great Ormond Street Hospital for Children	100%
12	Leicester Glenfield Hospital	100%
1	Liverpool Alder Hey Hospital	100%
30	Southampton Wessex Cardiothoracic Centre	100%
23	Dublin Our Lady's Children's Hospital	100%
4	Birmingham Children's Hospital	89%
8	Newcastle Freeman Hospital	100%
13	London Evelina London Children's Hospital	100%

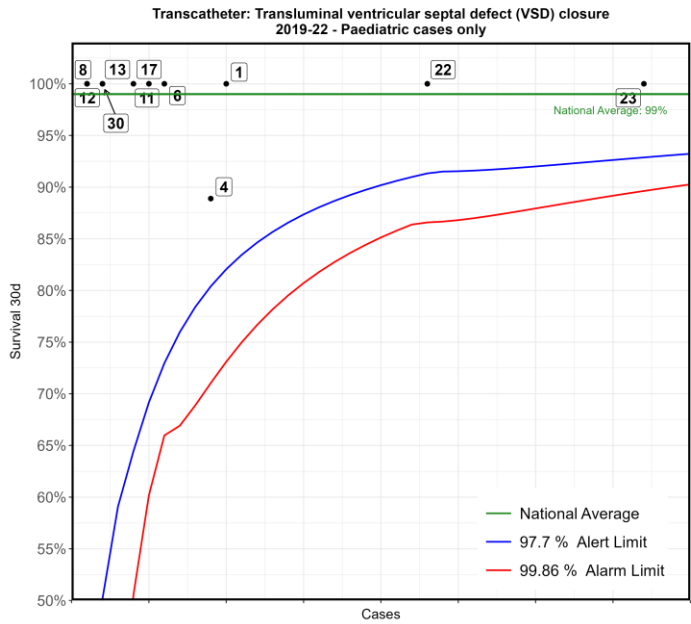
*This Funnel plot includes 1 patient(s) at least from this centre who had 2 procedures within the same 30 day time period. The procedure for this patient has only been counted once in this display with respect to life status for statistical reasons to ensure the patient is not counted as alive or deceased twice over.

**Transcatheter: Stent placement in right ventricular outflow tract (RVOT)
2019-22 - Paediatric cases only**



No	Hospital Name	Survival 30d
***23	Dublin Our Lady's Children's Hospital	96%
4	Birmingham Children's Hospital	96%
8	Newcastle Freeman Hospital	100%
17	Leeds General Infirmary	100%
*1	Liverpool Alder Hey Hospital	93%
11	London Great Ormond Street Hospital for Children	100%
6	Bristol Royal Hospital For Children	100%
30	Southampton Wessex Cardiothoracic Centre	100%
22	London Royal Brompton Hospital	86%
12	Leicester Glenfield Hospital	83%
13	London Evelina London Children's Hospital	100%

*This Funnel plot includes 1 patient(s) at least from this centre who had 2 procedures within the same 30 day time period. The procedure for this patient has only been counted once in this display with respect to life status for statistical reasons to ensure the patient is not counted as alive or deceased twice over.



No	Hospital Name	Survival 30d
23	Dublin Our Lady's Children's Hospital	100%
22	London Royal Brompton Hospital	100%
1	Liverpool Alder Hey Hospital	100%
4	Birmingham Children's Hospital	89%
6	Bristol Royal Hospital For Children	100%
17	Leeds General Infirmary	100%
11	London Great Ormond Street Hospital for Children	100%
13	London Evelina London Children's Hospital	100%
30	Southampton Wessex Cardiothoracic Centre	100%
8	Newcastle Freeman Hospital	100%
*12	Leicester Glenfield Hospital	100%

*This Funnel plot includes 1 patient(s) at least from this centre who had 2 procedures within the same 30 day time period. The procedure for this patient has only been counted once in this display with respect to life status for statistical reasons to ensure the patient is not counted as alive or deceased twice over.