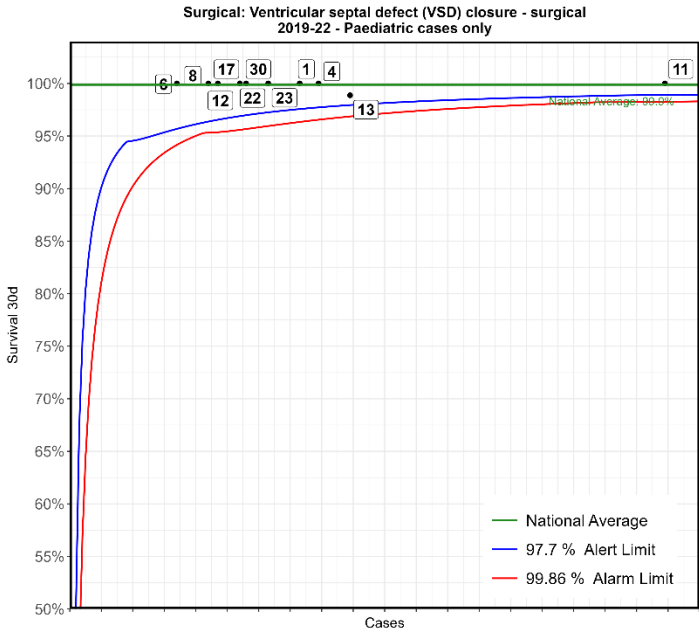


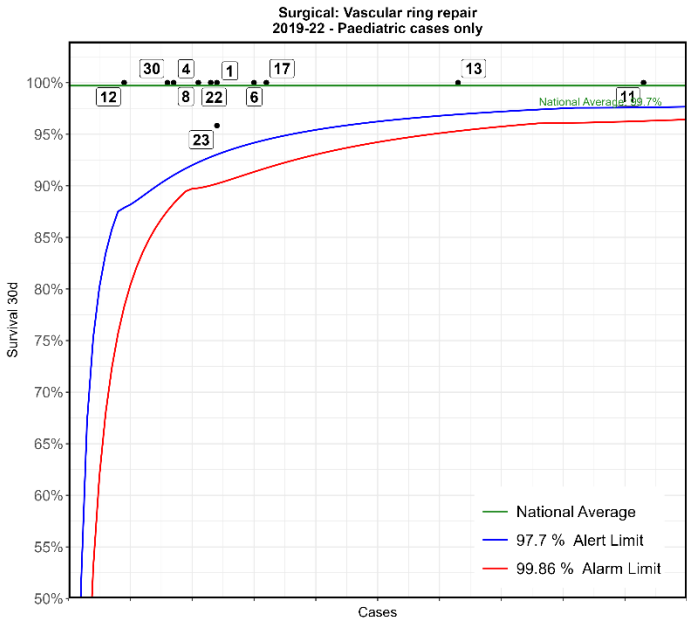


# NCHDA Surgical (all) 2019-22



No	Hospital Name	Survival 30d
11	London Great Ormond Street Hospital for Children	100%
13	London Evelina London Children's Hospital	99%
4	Birmingham Children's Hospital	100%
11	Liverpool Alder Hey Hospital	100%
23	Dublin Our Lady's Children's Hospital	100%
30	Southampton Wessex Cardiothoracic Centre	100%
17	Leeds General Infirmary	100%
22	London Royal Brompton Hospital	100%
12	Leicester Glenfield Hospital	100%
8	Newcastle Freeman Hospital	100%
6	Bristol Royal Hospital For Children	100%

\*This Funnel plot includes 1 patient(s) at least from this centre who had 2 procedures within the same 30 day time period. The procedure for this patient has only been counted once in this display with respect to life status for statistical reasons to ensure the patient is not counted as alive or deceased twice over.

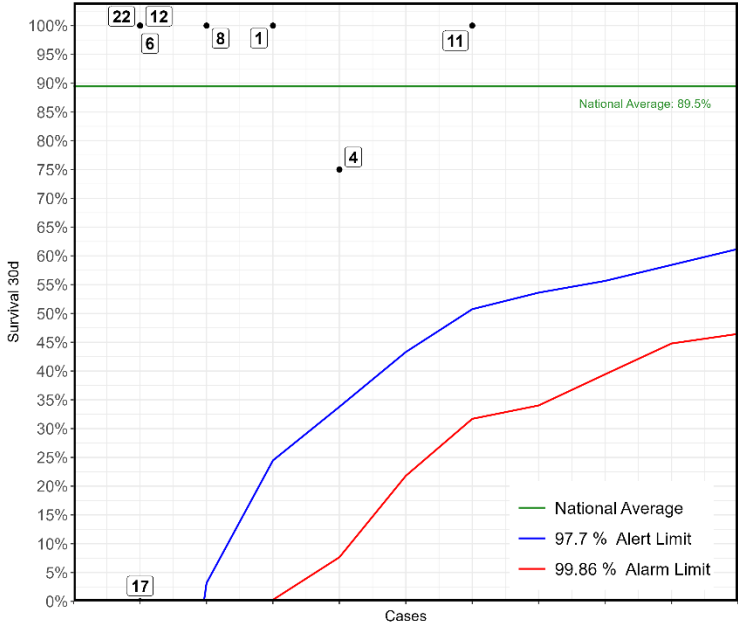


No	Hospital Name	Survival 30d
11	London Great Ormond Street Hospital for Children	100%
13	London Evelina London Children's Hospital	100%
17	Leeds General Infirmary	100%
6	Bristol Royal Hospital For Children	100%
1	Liverpool Alder Hey Hospital	100%
*23	Dublin Our Lady's Children's Hospital	96%
22	London Royal Brompton Hospital	100%
4	Birmingham Children's Hospital	100%
8	Newcastle Freeman Hospital	100%
30	Southampton Wessex Cardiothoracic Centre	100%
12	Leicester Glenfield Hospital	100%

\*This Funnel plot includes 1 patient(s) at least from this centre who had 2 procedures within the same 30 day time period. The procedure for this patient has only been counted once in this display with respect to life status for statistical reasons to ensure the patient is not counted as alive or deceased twice over.

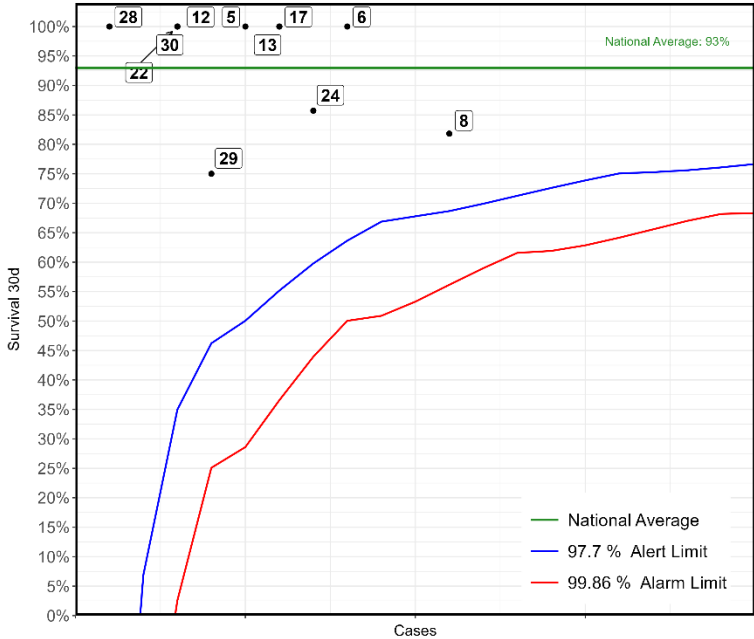


Surgical: Tricuspid valve replacement  
2019-22 - Paediatric cases only

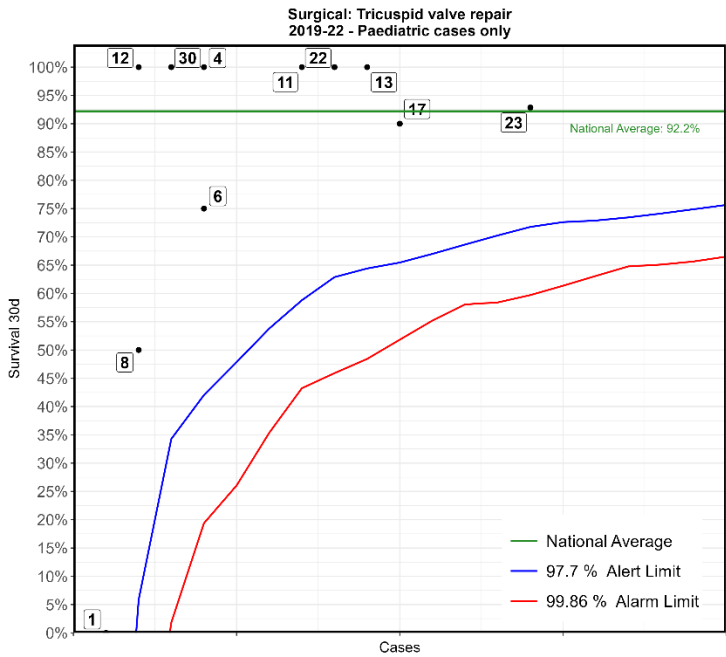


No	Hospital Name	Survival 30d
11	London Great Ormond Street Hospital for Children	100%
4	Birmingham Children's Hospital	75%
1	Liverpool Alder Hey Hospital	100%
8	Newcastle Freeman Hospital	100%
6	Bristol Royal Hospital For Children	100%
12	Leicester Glenfield Hospital	100%
17	Leeds General Infirmary	0%
22	London Royal Brompton Hospital	100%

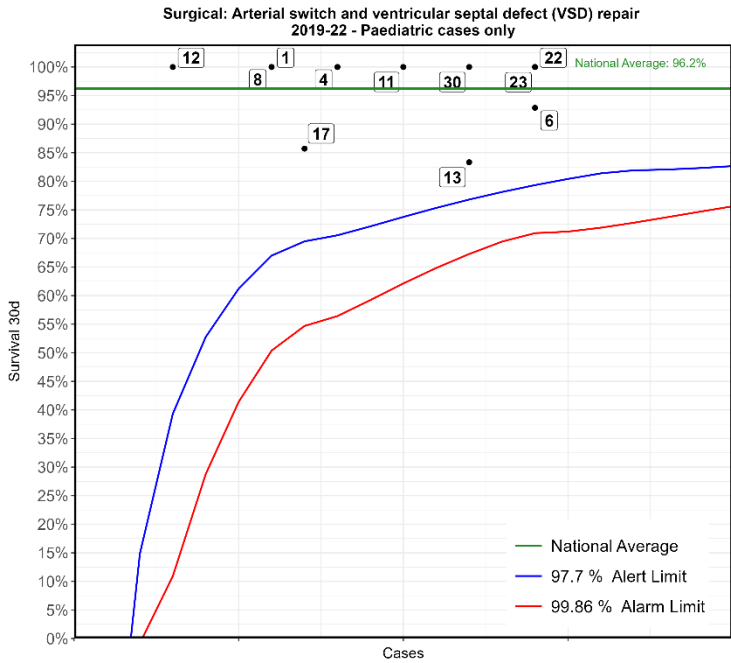
Surgical: Tricuspid valve replacement  
2019-22 - ACHD cases only



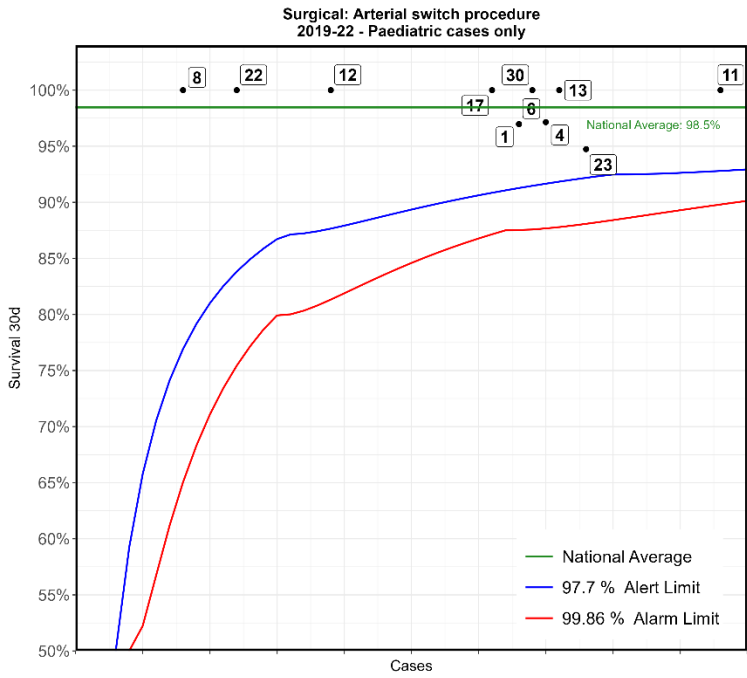
No	Hospital Name	Survival 30d
8	Newcastle Freeman Hospital	82%
6	Bristol Royal Hospital For Children	100%
24	Birmingham Queen Elizabeth Hospital	86%
13	London Evelina London Children's Hospital	100%
17	Leeds General Infirmary	100%
5	Liverpool Heart and Chest Hospital	100%
29	London Barts Heart Centre	75%
12	Leicester Glenfield Hospital	100%
22	London Royal Brompton Hospital	100%
30	Southampton Wessex Cardiothoracic Centre	100%
28	Belfast Royal Victoria Hospital	100%



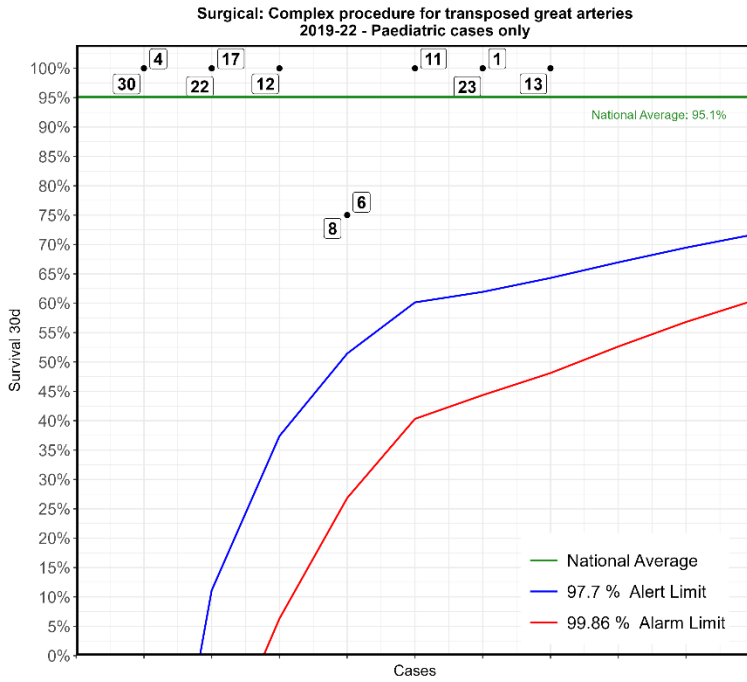
No	Hospital Name	Survival 30d
23	Dublin Our Lady's Children's Hospital	93%
17	Leeds General Infirmary	90%
13	London Evelina London Children's Hospital	100%
22	London Royal Brompton Hospital	100%
11	London Great Ormond Street Hospital for Children	100%
4	Birmingham Children's Hospital	100%
6	Bristol Royal Hospital For Children	75%
30	Southampton Wessex Cardiothoracic Centre	100%
8	Newcastle Freeman Hospital	50%
12	Leicester Glenfield Hospital	100%
1	Liverpool Alder Hey Hospital	0%



No	Hospital Name	Survival 30d
6	Bristol Royal Hospital For Children	93%
22	London Royal Brompton Hospital	100%
23	Dublin Our Lady's Children's Hospital	100%
13	London Evelina London Children's Hospital	83%
30	Southampton Wessex Cardiothoracic Centre	100%
11	London Great Ormond Street Hospital for Children	100%
4	Birmingham Children's Hospital	100%
17	Leeds General Infirmary	86%
1	Liverpool Alder Hey Hospital	100%
8	Newcastle Freeman Hospital	100%
12	Leicester Glenfield Hospital	100%



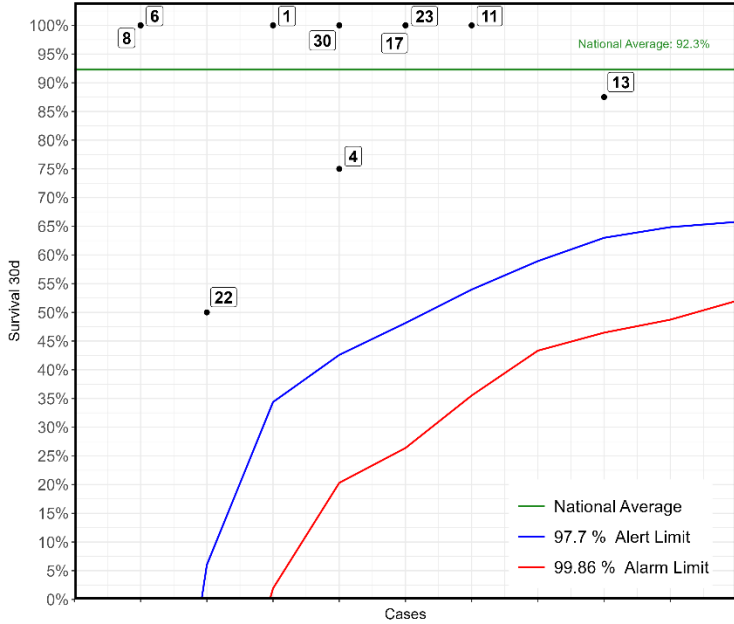
No	Hospital Name	Survival 30d
11	London Great Ormond Street Hospital for Children	100%
23	Dublin Our Lady's Children's Hospital	95%
13	London Evelina London Children's Hospital	100%
4	Birmingham Children's Hospital	97%
30	Southampton Wessex Cardiothoracic Centre	100%
1	Liverpool Alder Hey Hospital	97%
6	Bristol Royal Hospital For Children	97%
17	Leeds General Infirmary	100%
12	Leicester Glenfield Hospital	100%
22	London Royal Brompton Hospital	100%
8	Newcastle Freeman Hospital	100%



No	Hospital Name	Survival 30d
13	London Evelina London Children's Hospital	100%
1	Liverpool Alder Hey Hospital	100%
23	Dublin Our Lady's Children's Hospital	100%
11	London Great Ormond Street Hospital for Children	100%
6	Bristol Royal Hospital For Children	75%
8	Newcastle Freeman Hospital	75%
12	Leicester Glenfield Hospital	100%
17	Leeds General Infirmary	100%
22	London Royal Brompton Hospital	100%
4	Birmingham Children's Hospital	100%
30	Southampton Wessex Cardiothoracic Centre	100%

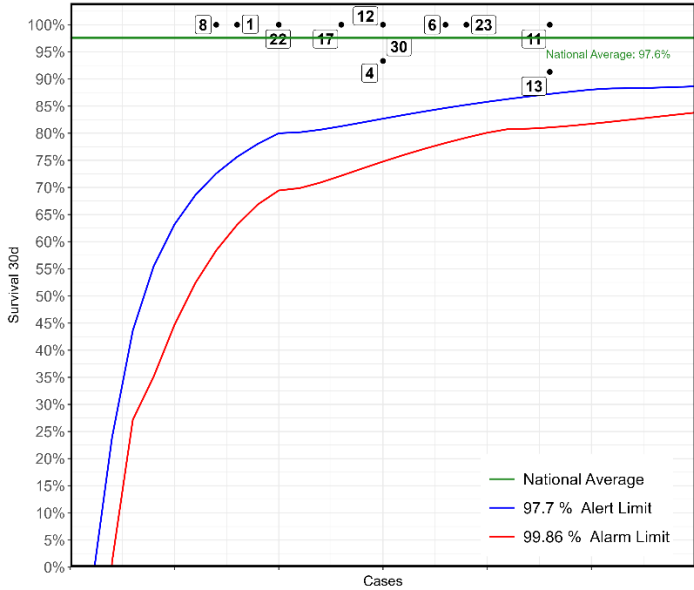


**Surgical: Arterial switch and aorta arch repair  
2019-22 - Paediatric cases only**



No	Hospital Name	Survival 30d
13	London Evelina London Children's Hospital	88%
11	London Great Ormond Street Hospital for Children	100%
17	Leeds General Infirmary	100%
23	Dublin Our Lady's Children's Hospital	100%
4	Birmingham Children's Hospital	75%
30	Southampton Wessex Cardiothoracic Centre	100%
1	Liverpool Alder Hey Hospital	100%
22	London Royal Brompton Hospital	50%
6	Bristol Royal Hospital For Children	100%
8	Newcastle Freeman Hospital	100%

**Surgical: Totally anomalous pulmonary venous connection (TAPVC) repair  
2019-22 - Paediatric cases only**

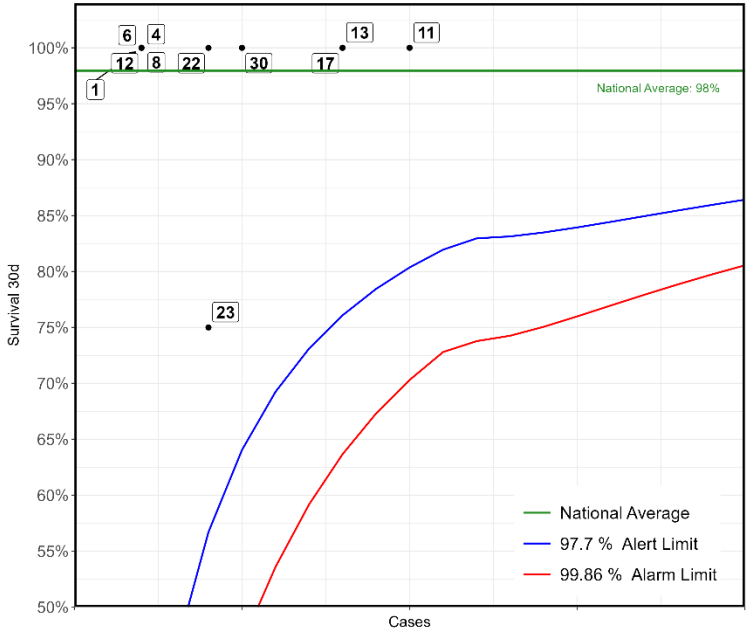


No	Hospital Name	Survival 30d
11	London Great Ormond Street Hospital for Children	100%
13	London Evelina London Children's Hospital	91%
*23	Dublin Our Lady's Children's Hospital	100%
6	Bristol Royal Hospital For Children	100%
4	Birmingham Children's Hospital	93%
12	Leicester Glenfield Hospital	100%
30	Southampton Wessex Cardiothoracic Centre	93%
17	Leeds General Infirmary	100%
22	London Royal Brompton Hospital	100%
1	Liverpool Alder Hey Hospital	100%
8	Newcastle Freeman Hospital	100%

\*This Funnel plot includes 1 patient(s) at least from this centre who had 2 procedures within the same 30 day time period. The procedure for this patient has only been counted once in this display with respect to life status for statistical reasons to ensure the patient is not counted as alive or deceased twice over.

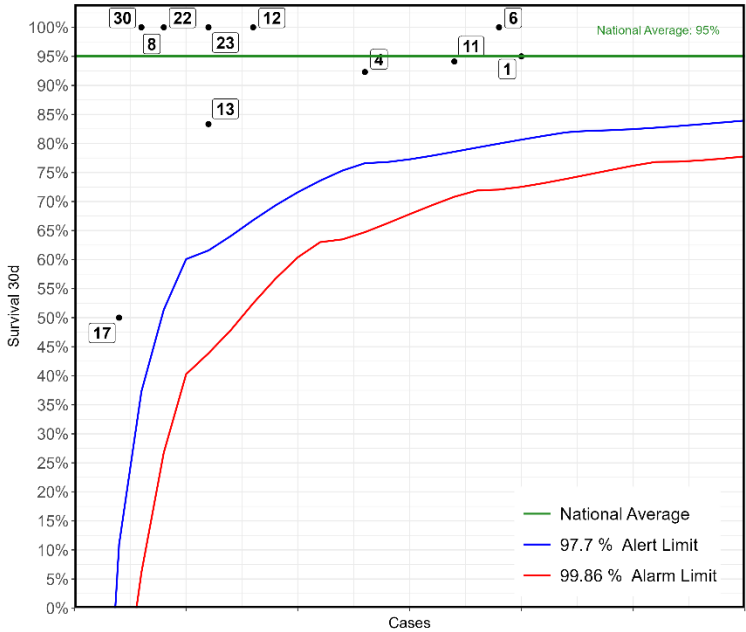


**Surgical: Supravalvar aortic stenosis repair  
2019-22 - Paediatric cases only**



No	Hospital Name	Survival 30d
11	London Great Ormond Street Hospital for Children	100%
13	London Evelina London Children's Hospital	100%
17	Leeds General Infirmary	100%
30	Southampton Wessex Cardiothoracic Centre	100%
22	London Royal Brompton Hospital	100%
23	Dublin Our Lady's Children's Hospital	75%
1	Liverpool Alder Hey Hospital	100%
4	Birmingham Children's Hospital	100%
6	Bristol Royal Hospital For Children	100%
8	Newcastle Freeman Hospital	100%
12	Leicester Glenfield Hospital	100%

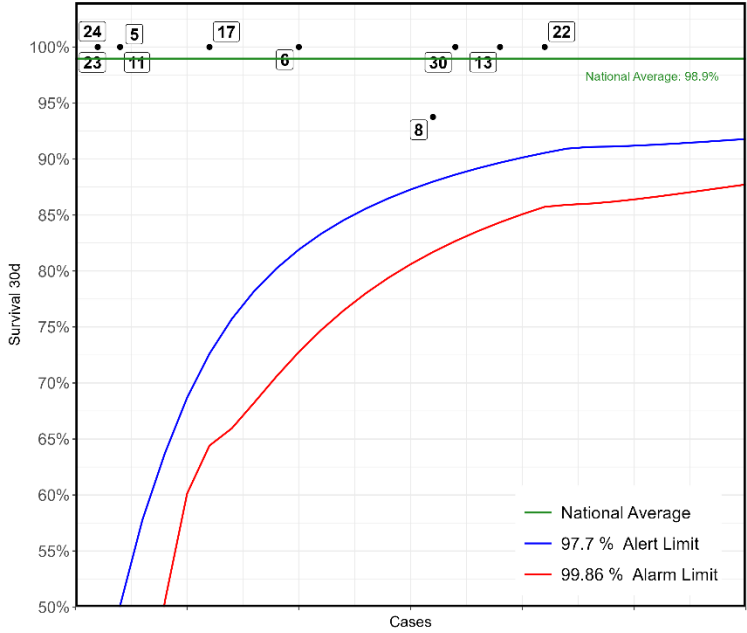
**Surgical: Right ventricle to pulmonary artery conduit construction  
2019-22 - Paediatric cases only**



No	Hospital Name	Survival 30d
1	Liverpool Alder Hey Hospital	95%
6	Bristol Royal Hospital For Children	100%
11	London Great Ormond Street Hospital for Children	94%
4	Birmingham Children's Hospital	92%
12	Leicester Glenfield Hospital	100%
13	London Evelina London Children's Hospital	83%
23	Dublin Our Lady's Children's Hospital	100%
22	London Royal Brompton Hospital	100%
8	Newcastle Freeman Hospital	100%
30	Southampton Wessex Cardiothoracic Centre	100%
17	Leeds General Infirmary	50%

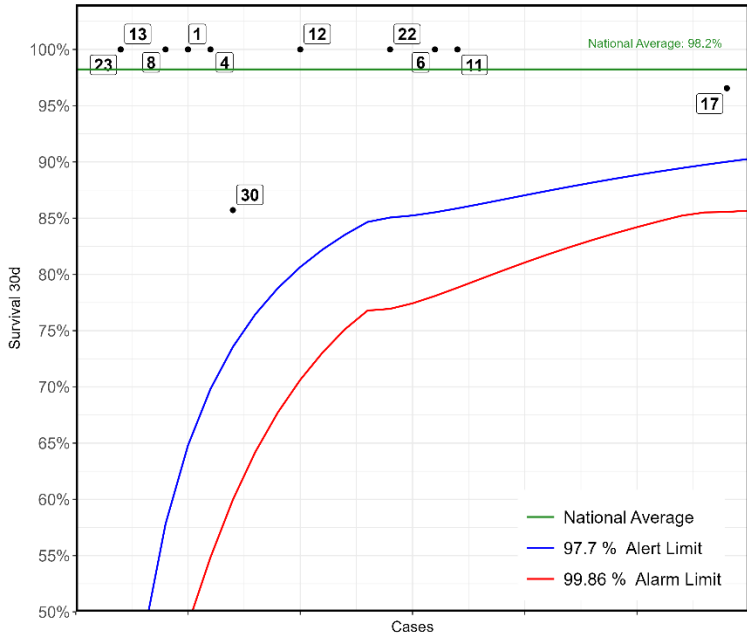


**Surgical: Ross procedure (aortic valve-root replacement with pulmonary autograph)  
2019-22 - ACHD cases only**



No	Hospital Name	Survival 30d
22	London Royal Brompton Hospital	100%
13	London Evelina London Children's Hospital	100%
30	Southampton Wessex Cardiothoracic Centre	100%
8	Newcastle Freeman Hospital	94%
6	Bristol Royal Hospital For Children	100%
17	Leeds General Infirmary	100%
5	Liverpool Heart and Chest Hospital	100%
11	London Great Ormond Street Hospital for Children	100%
23	Dublin Our Lady's Children's Hospital	100%
24	Birmingham Queen Elizabeth Hospital	100%

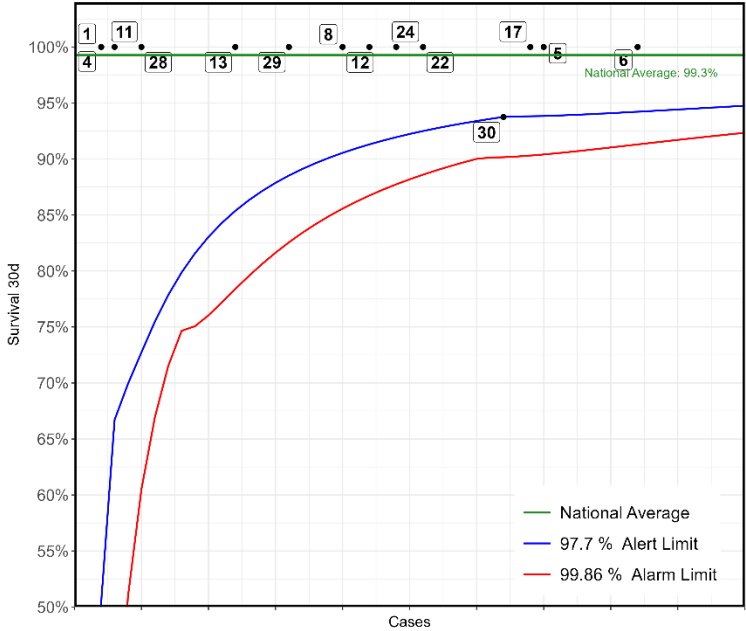
**Surgical: Pulmonary valve replacement  
2019-22 - Paediatric cases only**



No	Hospital Name	Survival 30d
17	Leeds General Infirmary	97%
11	London Great Ormond Street Hospital for Children	100%
6	Bristol Royal Hospital For Children	100%
22	London Royal Brompton Hospital	100%
12	Leicester Glenfield Hospital	100%
30	Southampton Wessex Cardiothoracic Centre	86%
4	Birmingham Children's Hospital	100%
1	Liverpool Alder Hey Hospital	100%
8	Newcastle Freeman Hospital	100%
13	London Evelina London Children's Hospital	100%
23	Dublin Our Lady's Children's Hospital	100%

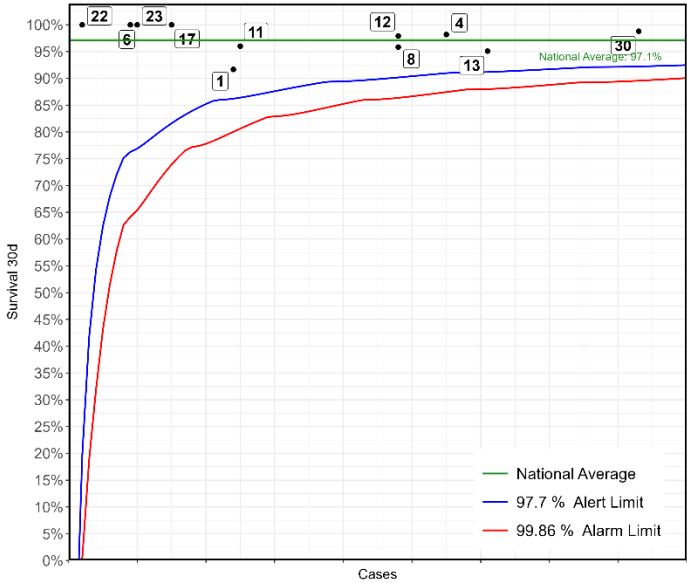


**Surgical: Pulmonary valve replacement  
2019-22 - ACHD cases only**



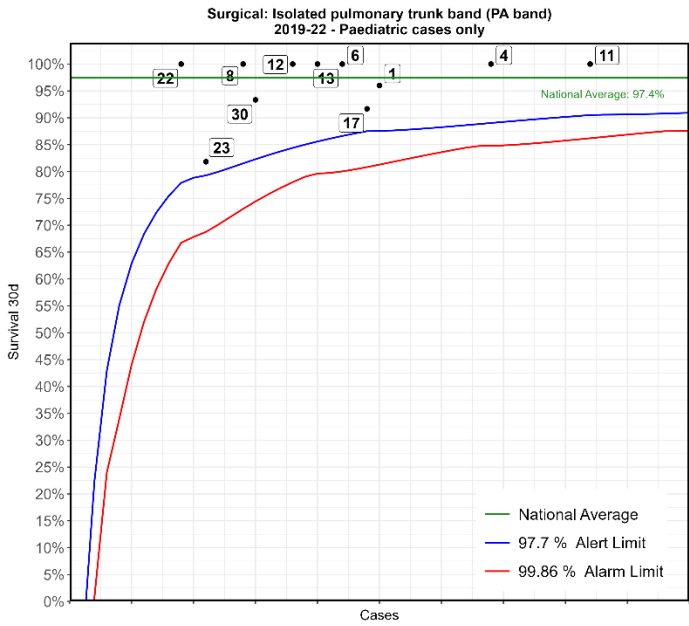
No	Hospital Name	Survival 30d
6	Bristol Royal Hospital For Children	100%
5	Liverpool Heart and Chest Hospital	100%
17	Leeds General Infirmary	100%
30	Southampton Wessex Cardiothoracic Centre	94%
22	London Royal Brompton Hospital	100%
24	Birmingham Queen Elizabeth Hospital	100%
12	Leicester Glenfield Hospital	100%
8	Newcastle Freeman Hospital	100%
29	London Barts Heart Centre	100%
13	London Evelina London Children's Hospital	100%
28	Belfast Royal Victoria Hospital	100%
11	London Great Ormond Street Hospital for Children	100%
1	Liverpool Alder Hey Hospital	100%
4	Birmingham Children's Hospital	100%

**Surgical: Patent arterial duct (PDA) closure - surgical  
2019-22 - Paediatric cases only**



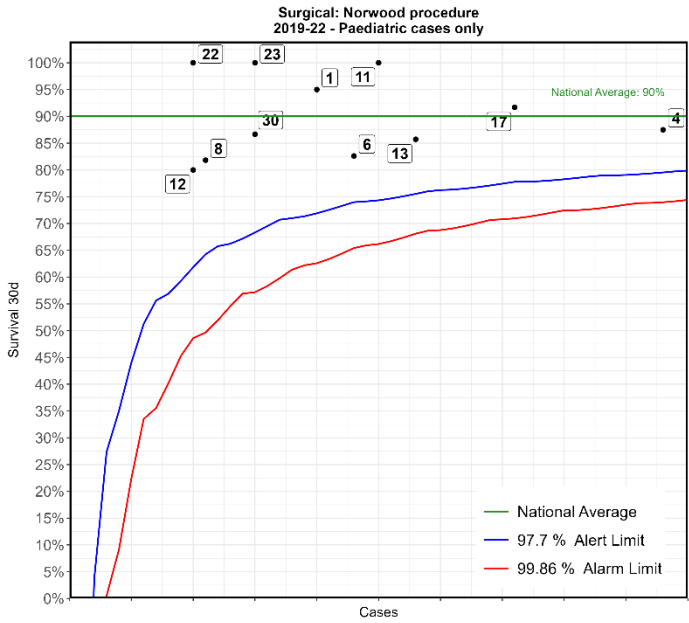
No	Hospital Name	Survival 30d
30	Southampton Wessex Cardiothoracic Centre	99%
13	London Evelina London Children's Hospital	95%
4	Birmingham Children's Hospital	98%
8	Newcastle Freeman Hospital	96%
12	Leicester Glenfield Hospital	98%
11	London Great Ormond Street Hospital for Children	96%
1	Liverpool Alder Hey Hospital	92%
17	Leeds General Infirmary	100%
23	Dublin Our Lady's Children's Hospital	100%
6	Bristol Royal Hospital For Children	100%
22	London Royal Brompton Hospital	100%

\*This Funnel plot includes 1 patient(s) at least from this centre who had 2 procedures within the same 30 day time period. The procedure for this patient has only been counted once in this display with respect to life status for statistical reasons to ensure the patient is not counted as alive or deceased twice over.



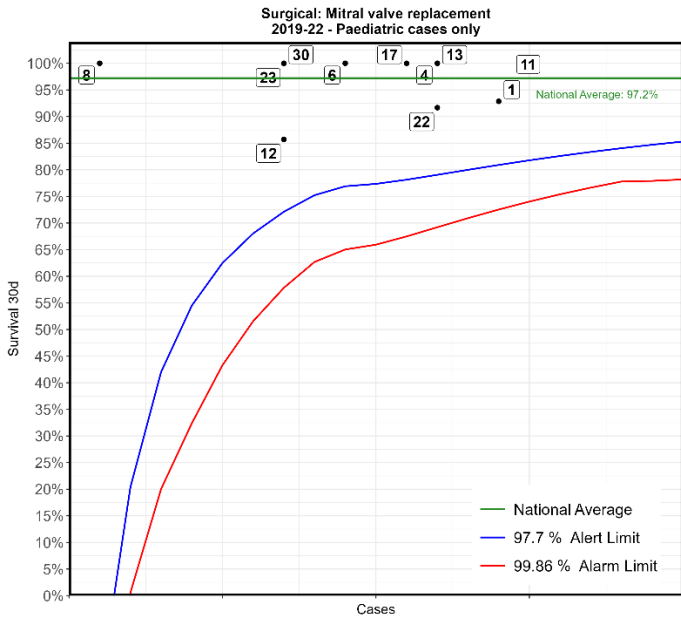
No	Hospital Name	Survival 30d
11	London Great Ormond Street Hospital for Children	100%
4	Birmingham Children's Hospital	100%
1	Liverpool Alder Hey Hospital	96%
17	Leeds General Infirmary	92%
6	Bristol Royal Hospital For Children	100%
13	London Evelina London Children's Hospital	100%
12	Leicester Glenfield Hospital	100%
*30	Southampton Wessex Cardiothoracic Centre	93%
8	Newcastle Freeman Hospital	100%
23	Dublin Our Lady's Children's Hospital	82%
22	London Royal Brompton Hospital	100%

\*This Funnel plot includes 1 patient(s) at least from this centre who had 2 procedures within the same 30 day time period. The procedure for this patient has only been counted once in this display with respect to life status for statistical reasons to ensure the patient is not counted as alive or deceased twice over.



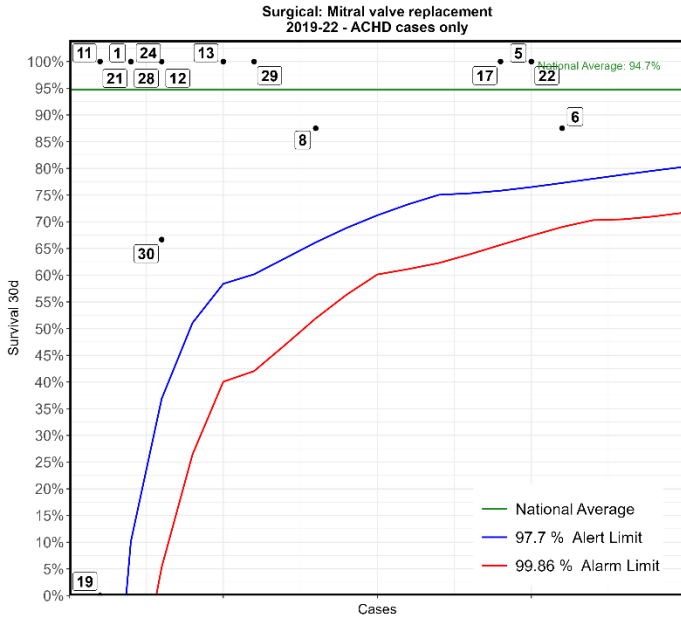
No	Hospital Name	Survival 30d
4	Birmingham Children's Hospital	88%
17	Leeds General Infirmary	92%
13	London Evelina London Children's Hospital	86%
11	London Great Ormond Street Hospital for Children	100%
6	Bristol Royal Hospital For Children	83%
1	Liverpool Alder Hey Hospital	95%
23	Dublin Our Lady's Children's Hospital	100%
*30	Southampton Wessex Cardiothoracic Centre	87%
8	Newcastle Freeman Hospital	82%
12	Leicester Glenfield Hospital	80%
22	London Royal Brompton Hospital	100%

\*This Funnel plot includes 1 patient(s) at least from this centre who had 2 procedures within the same 30 day time period. The procedure for this patient has only been counted once in this display with respect to life status for statistical reasons to ensure the patient is not counted as alive or deceased twice over.



No	Hospital Name	Survival 30d
11	London Great Ormond Street Hospital for Children	100%
*1	Liverpool Alder Hey Hospital	93%
4	Birmingham Children's Hospital	100%
13	London Evelina London Children's Hospital	100%
22	London Royal Brompton Hospital	92%
17	Leeds General Infirmary	100%
6	Bristol Royal Hospital For Children	100%
*12	Leicester Glenfield Hospital	86%
23	Dublin Our Lady's Children's Hospital	100%
30	Southampton Wessex Cardiothoracic Centre	100%
8	Newcastle Freeman Hospital	100%

\*This Funnel plot includes 1 patient(s) at least from this centre who had 2 procedures within the same 30 day time period. The procedure for this patient has only been counted once in this display with respect to life status for statistical reasons to ensure the patient is not counted as alive or deceased twice over.

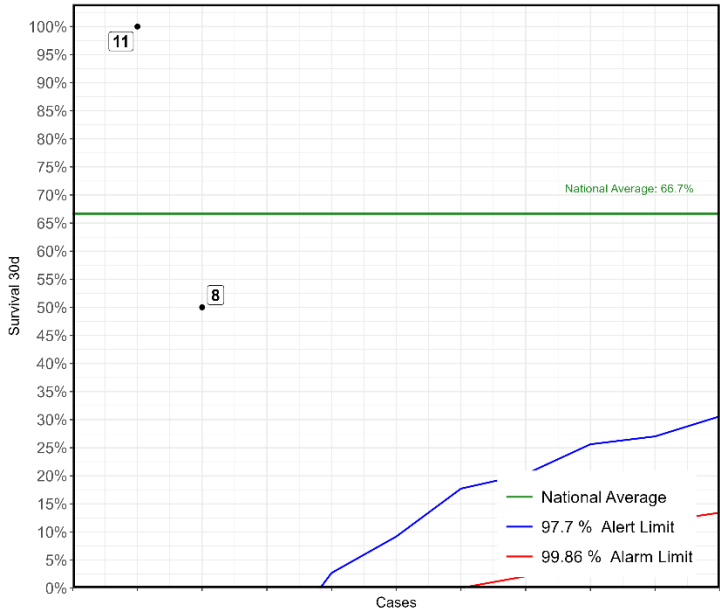


No	Hospital Name	Survival 30d
*6	Bristol Royal Hospital For Children	88%
5	Liverpool Heart and Chest Hospital	100%
22	London Royal Brompton Hospital	100%
17	Leeds General Infirmary	100%
*8	Newcastle Freeman Hospital	88%
29	London Barts Heart Centre	100%
13	London Evelina London Children's Hospital	100%
12	Leicester Glenfield Hospital	100%
30	Southampton Wessex Cardiothoracic Centre	67%
1	Liverpool Alder Hey Hospital	100%
21	Sheffield Northern General Hospital	100%
24	Birmingham Queen Elizabeth Hospital	100%
28	Belfast Royal Victoria Hospital	100%
11	London Great Ormond Street Hospital for Children	100%
19	Manchester Royal Infirmary	0%

\*This Funnel plot includes 1 patient(s) at least from this centre who had 2 procedures within the same 30 day time period. The procedure for this patient has only been counted once in this display with respect to life status for statistical reasons to ensure the patient is not counted as alive or deceased twice over.

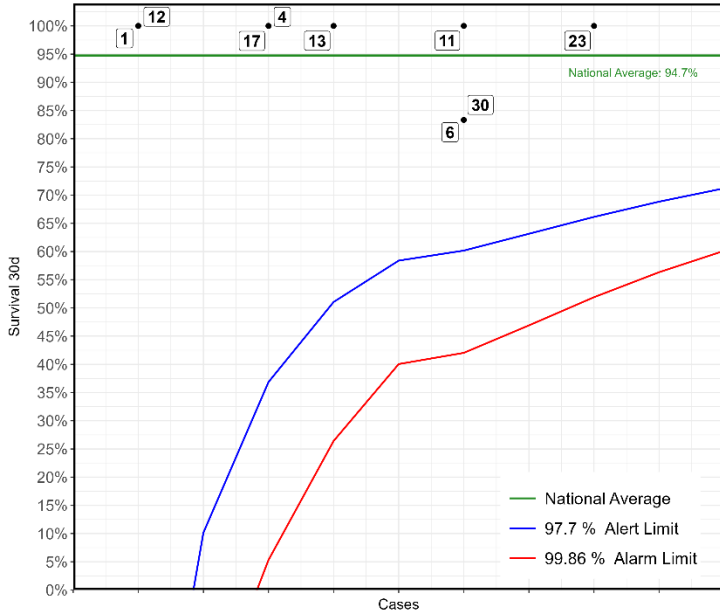


**Surgical: Lung transplant (includes heart and lung transplant)  
2019-22 - ACHD cases only**

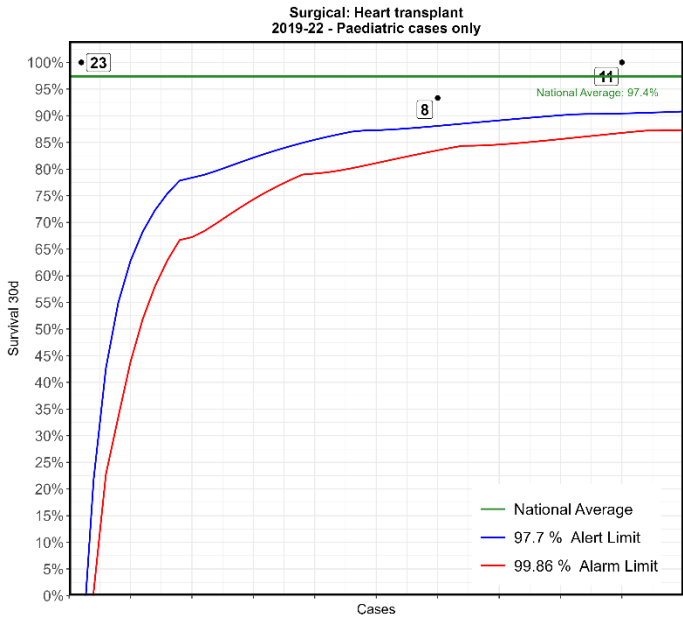


No	Hospital Name	Survival 30d
8	Newcastle Freeman Hospital	50%
11	London Great Ormond Street Hospital for Children	100%

**Surgical: Interrupted aortic arch repair  
2019-22 - Paediatric cases only**

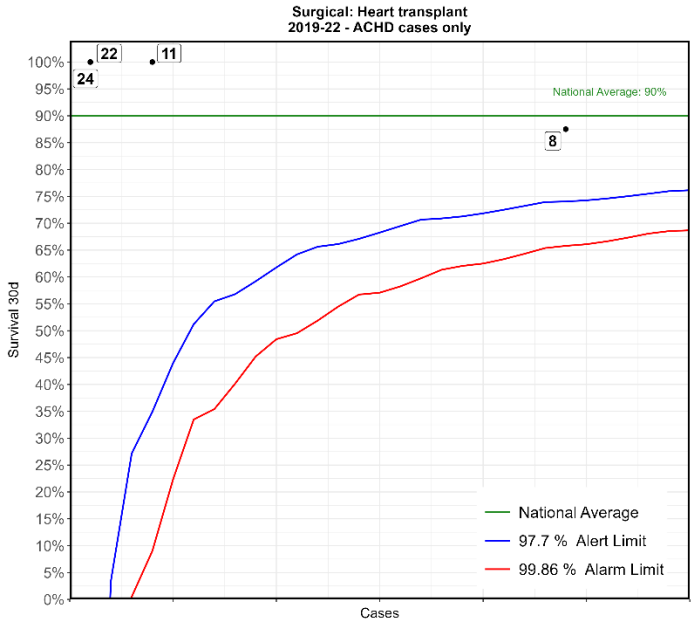


No	Hospital Name	Survival 30d
23	Dublin Our Lady's Children's Hospital	100%
6	Bristol Royal Hospital For Children	83%
11	London Great Ormond Street Hospital for Children	100%
30	Southampton Wessex Cardiothoracic Centre	83%
13	London Evelina London Children's Hospital	100%
4	Birmingham Children's Hospital	100%
17	Leeds General Infirmary	100%
1	Liverpool Alder Hey Hospital	100%
12	Leicester Glenfield Hospital	100%

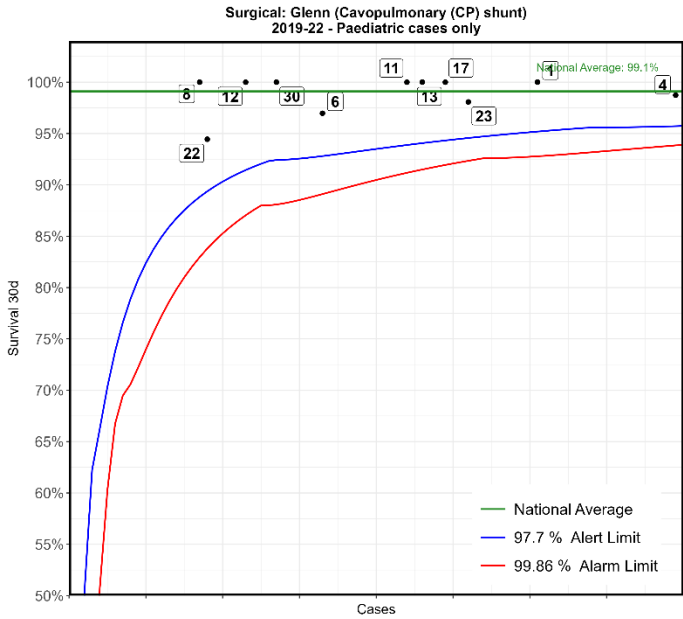


No	Hospital Name	Survival 30d
11	London Great Ormond Street Hospital for Children	100%
*8	Newcastle Freeman Hospital	93%
23	Dublin Our Lady's Children's Hospital	100%

\*This Funnel plot includes 1 patient(s) at least from this centre who had 2 procedures within the same 30 day time period. The procedure for this patient has only been counted once in this display with respect to life status for statistical reasons to ensure the patient is not counted as alive or deceased twice over.

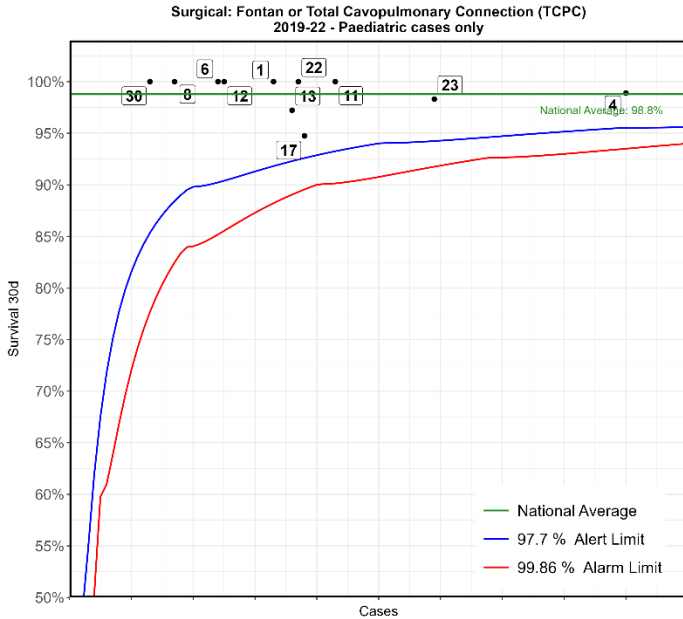


No	Hospital Name	Survival 30d
8	Newcastle Freeman Hospital	88%
11	London Great Ormond Street Hospital for Children	100%
22	London Royal Brompton Hospital	100%
24	Birmingham Queen Elizabeth Hospital	100%



No	Hospital Name	Survival 30d
4	Birmingham Children's Hospital	99%
1	Liverpool Alder Hey Hospital	100%
23	Dublin Our Lady's Children's Hospital	98%
17	Leeds General Infirmary	100%
13	London Evelina London Children's Hospital	100%
**11	London Great Ormond Street Hospital for Children	100%
6	Bristol Royal Hospital For Children	97%
30	Southampton Wessex Cardiothoracic Centre	100%
12	Leicester Glenfield Hospital	100%
22	London Royal Brompton Hospital	94%
*8	Newcastle Freeman Hospital	100%

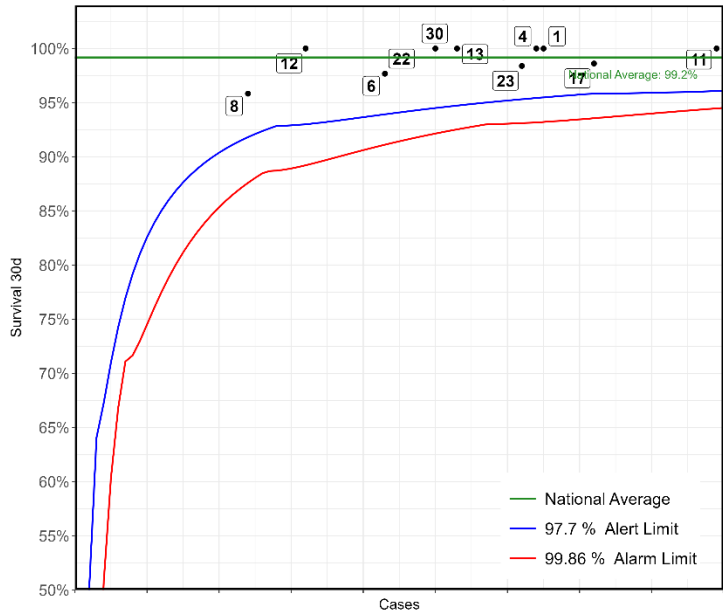
\*This Funnel plot includes 1 patient(s) at least from this centre who had 2 procedures within the same 30 day time period. The procedure for this patient has only been counted once in this display with respect to life status for statistical reasons to ensure the patient is not counted as alive or deceased twice over.



No	Hospital Name	Survival 30d
4	Birmingham Children's Hospital	99%
23	Dublin Our Lady's Children's Hospital	98%
11	London Great Ormond Street Hospital for Children	100%
17	Leeds General Infirmary	95%
22	London Royal Brompton Hospital	100%
13	London Evelina London Children's Hospital	97%
1	Liverpool Alder Hey Hospital	100%
12	Leicester Glenfield Hospital	100%
6	Bristol Royal Hospital For Children	100%
8	Newcastle Freeman Hospital	100%
30	Southampton Wessex Cardiothoracic Centre	100%

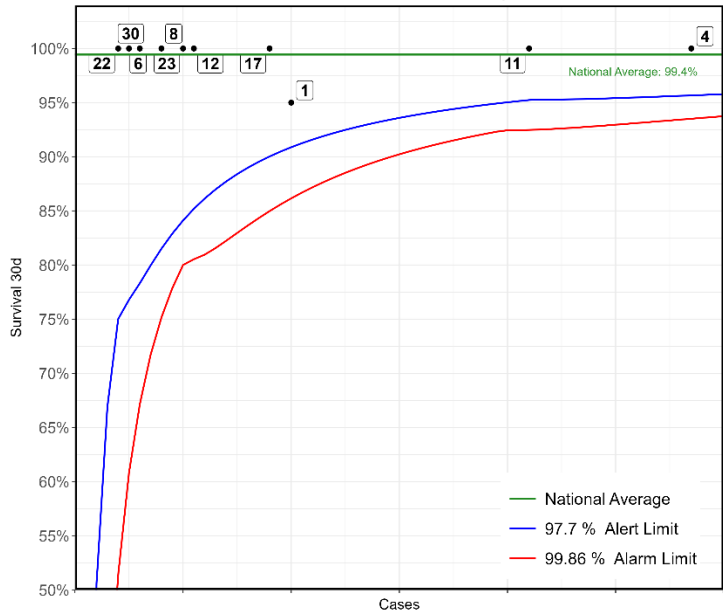


**Surgical: Tetralogy of Fallot and Fallot-type double outlet right ventricle repair  
2019-22 - Paediatric cases only**

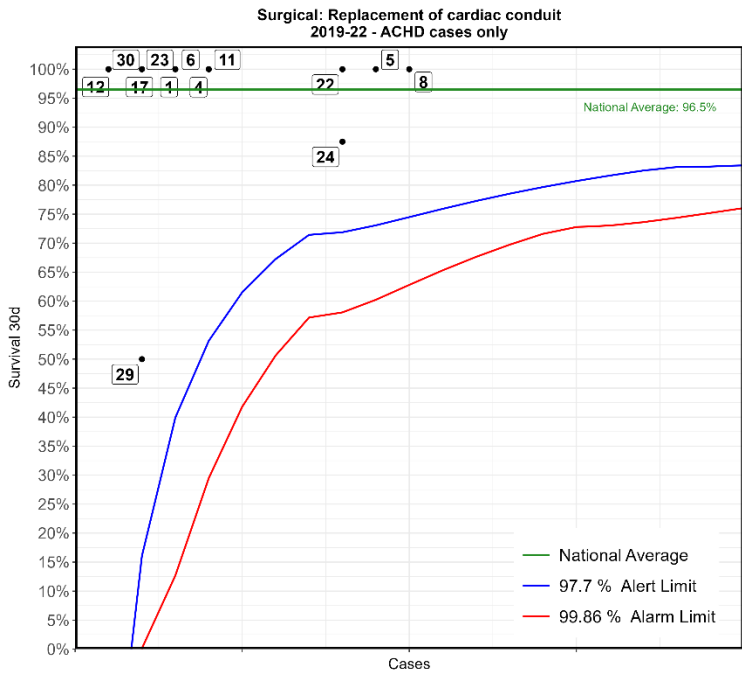


No	Hospital Name	Survival 30d
11	London Great Ormond Street Hospital for Children	100%
17	Leeds General Infirmary	99%
1	Liverpool Alder Hey Hospital	100%
4	Birmingham Children's Hospital	100%
23	Dublin Our Lady's Children's Hospital	98%
13	London Evelina London Children's Hospital	100%
30	Southampton Wessex Cardiothoracic Centre	100%
6	Bristol Royal Hospital For Children	98%
22	London Royal Brompton Hospital	98%
12	Leicester Glenfield Hospital	100%
8	Newcastle Freeman Hospital	96%

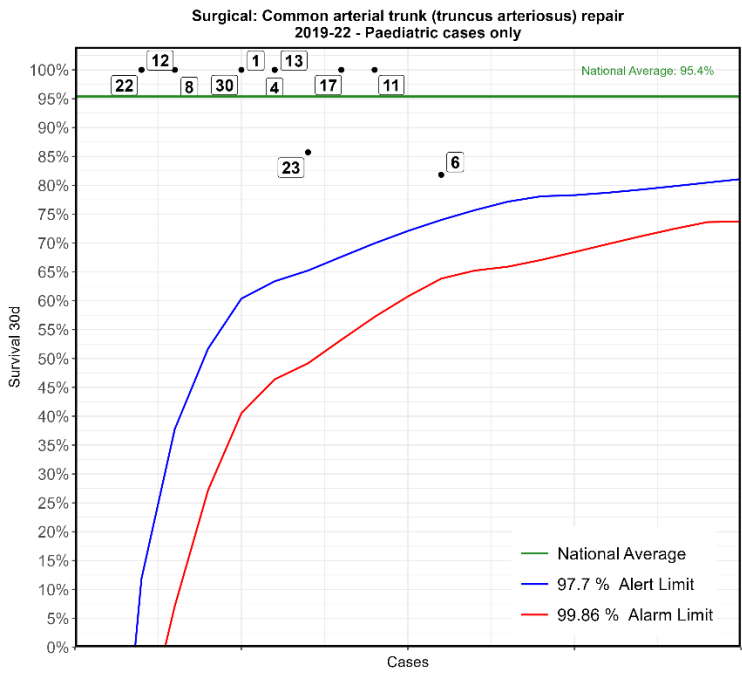
**Surgical: Replacement of cardiac conduit  
2019-22 - Paediatric cases only**



No	Hospital Name	Survival 30d
4	Birmingham Children's Hospital	100%
11	London Great Ormond Street Hospital for Children	100%
1	Liverpool Alder Hey Hospital	95%
17	Leeds General Infirmary	100%
12	Leicester Glenfield Hospital	100%
8	Newcastle Freeman Hospital	100%
23	Dublin Our Lady's Children's Hospital	100%
6	Bristol Royal Hospital For Children	100%
30	Southampton Wessex Cardiothoracic Centre	100%
22	London Royal Brompton Hospital	100%



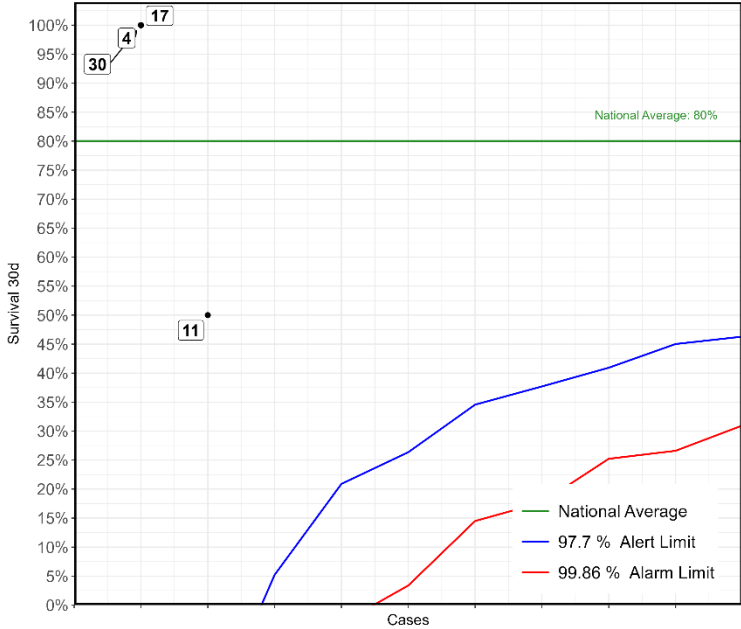
No	Hospital Name	Survival 30d
8	Newcastle Freeman Hospital	100%
5	Liverpool Heart and Chest Hospital	100%
22	London Royal Brompton Hospital	100%
24	Birmingham Queen Elizabeth Hospital	88%
4	Birmingham Children's Hospital	100%
11	London Great Ormond Street Hospital for Children	100%
1	Liverpool Alder Hey Hospital	100%
6	Bristol Royal Hospital For Children	100%
17	Leeds General Infirmary	100%
23	Dublin Our Lady's Children's Hospital	100%
29	London Barts Heart Centre	50%
12	Leicester Glenfield Hospital	100%
30	Southampton Wessex Cardiothoracic Centre	100%



No	Hospital Name	Survival 30d
6	Bristol Royal Hospital For Children	82%
11	London Great Ormond Street Hospital for Children	100%
17	Leeds General Infirmary	100%
23	Dublin Our Lady's Children's Hospital	86%
1	Liverpool Alder Hey Hospital	100%
4	Birmingham Children's Hospital	100%
13	London Evelina London Children's Hospital	100%
30	Southampton Wessex Cardiothoracic Centre	100%
8	Newcastle Freeman Hospital	100%
12	Leicester Glenfield Hospital	100%
22	London Royal Brompton Hospital	100%

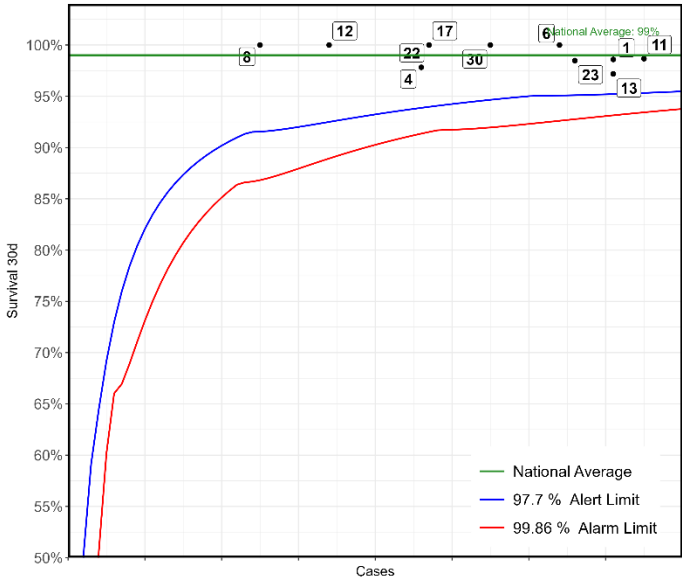


**Surgical: Common arterial trunk (truncus arteriosus) and aorta arch repair  
2019-22 - Paediatric cases only**



No	Hospital Name	Survival 30d
11	London Great Ormond Street Hospital for Children	50%
4	Birmingham Children's Hospital	100%
17	Leeds General Infirmary	100%
30	Southampton Wessex Cardiothoracic Centre	100%

**Surgical: Isolated coarctation/hypoplasia of aorta repair  
2019-22 - Paediatric cases only**

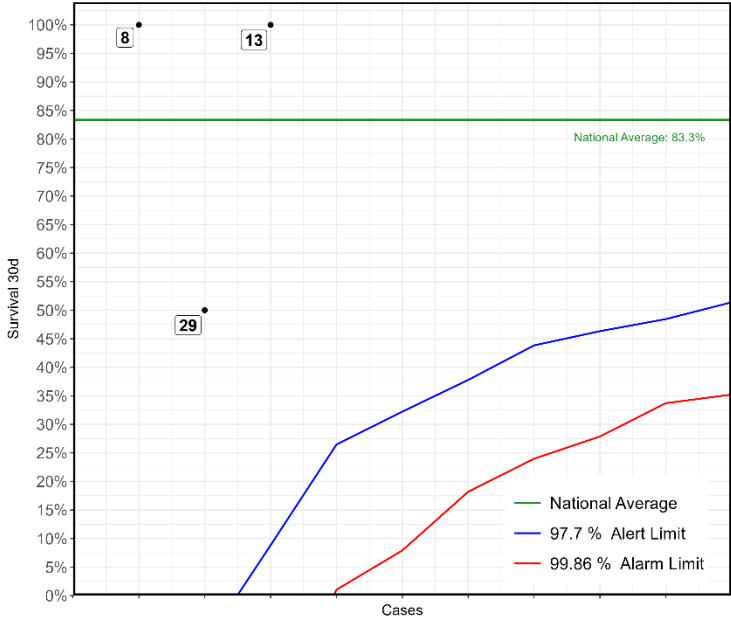


No	Hospital Name	Survival 30d
11	London Great Ormond Street Hospital for Children	99%
1	Liverpool Alder Hey Hospital	99%
*13	London Evelina London Children's Hospital	97%
*23	Dublin Our Lady's Children's Hospital	98%
6	Bristol Royal Hospital For Children	100%
30	Southampton Wessex Cardiothoracic Centre	100%
17	Leeds General Infirmary	100%
22	London Royal Brompton Hospital	100%
4	Birmingham Children's Hospital	98%
12	Leicester Glenfield Hospital	100%
**8	Newcastle Freeman Hospital	100%

\*This Funnel plot includes 1 patient(s) at least from this centre who had 2 procedures within the same 30 day time period. The procedure for this patient has only been counted once in this display with respect to life status for statistical reasons to ensure the patient is not counted as alive or deceased twice over.

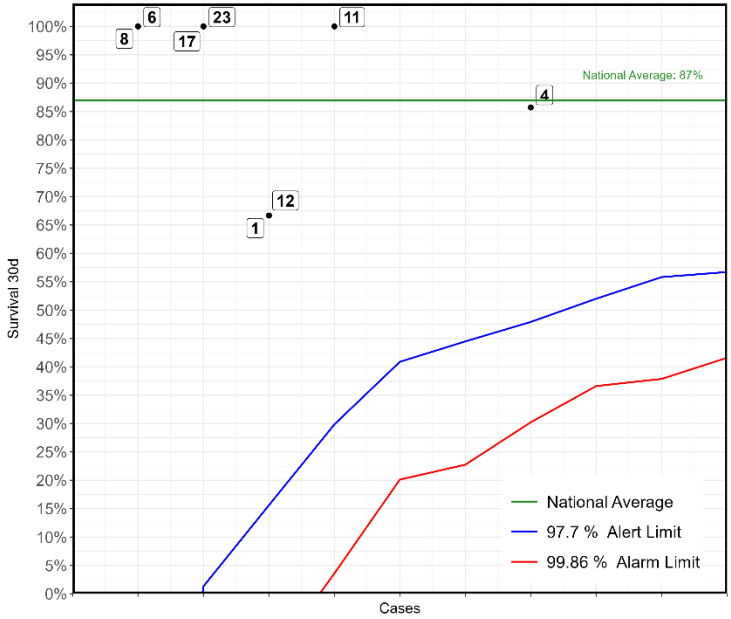


**Surgical: Isolated coarctation/hypoplasia of aorta repair  
2019-22 - ACHD cases only**



No	Hospital Name	Survival 30d
13	London Evelina London Children's Hospital	100%
29	London Barts Heart Centre	50%
8	Newcastle Freeman Hospital	100%

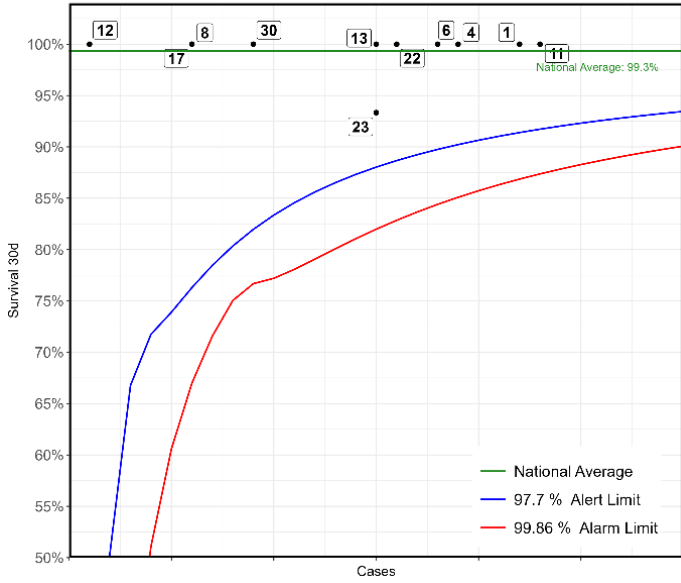
**Surgical: Double Switch or Rastelli-Senning repair of ccTGA  
2019-22 - Paediatric cases only**



No	Hospital Name	Survival 30d
4	Birmingham Children's Hospital	86%
11	London Great Ormond Street Hospital for Children	100%
1	Liverpool Alder Hey Hospital	67%
12	Leicester Glenfield Hospital	67%
17	Leeds General Infirmary	100%
23	Dublin Our Lady's Children's Hospital	100%
6	Bristol Royal Hospital For Children	100%
8	Newcastle Freeman Hospital	100%



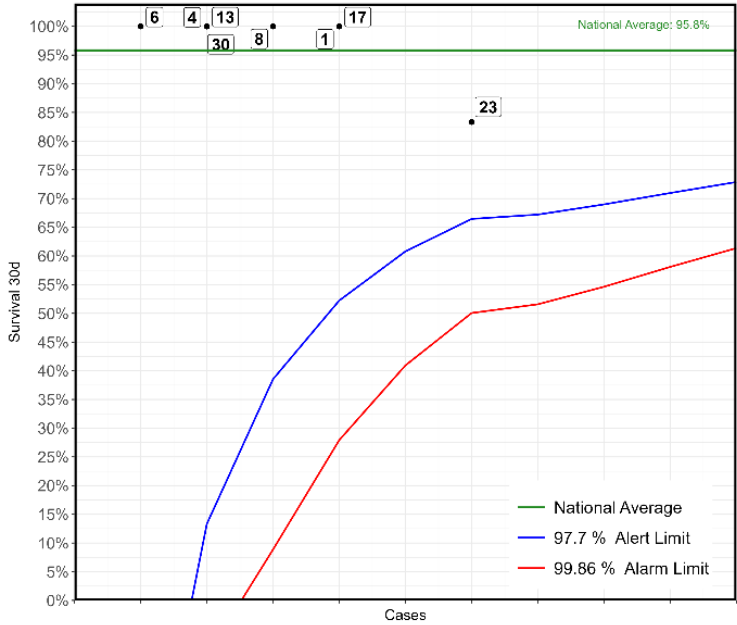
**Surgical: Partial atrioventricular septal defect (AVSD) repair  
2019-22 - Paediatric cases only**



No	Hospital Name	Survival 30d
11	London Great Ormond Street Hospital for Children	100%
1	Liverpool Alder Hey Hospital	100%
4	Birmingham Children's Hospital	100%
6	Bristol Royal Hospital For Children	100%
22	London Royal Brompton Hospital	100%
13	London Evelina London Children's Hospital	100%
23	Dublin Our Lady's Children's Hospital	93%
30	Southampton Wessex Cardiothoracic Centre	100%
8	Newcastle Freeman Hospital	100%
17	Leeds General Infirmary	100%
12	Leicester Glenfield Hospital	100%

\*This Funnel plot includes 1 patient(s) at least from this centre who had 2 procedures within the same 30 day time period. The procedure for this patient has only been counted once in this display with respect to life status for statistical reasons to ensure the patient is not counted as alive or deceased twice over.

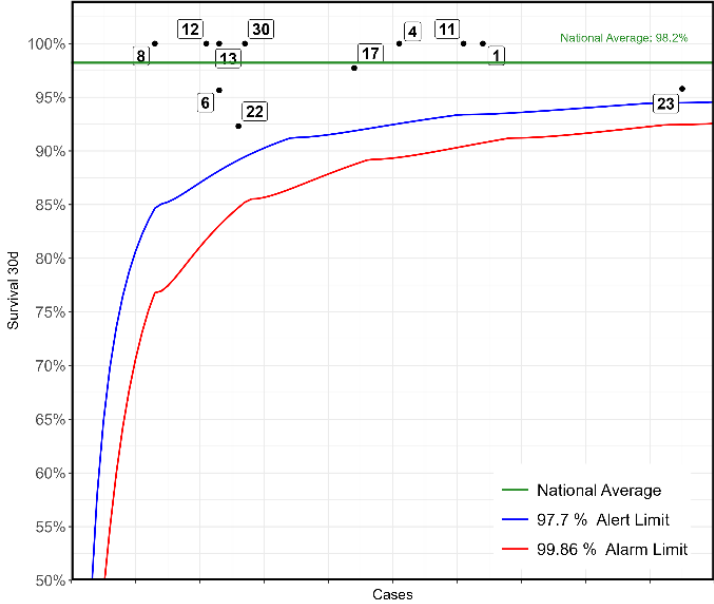
**Surgical: Atrioventricular septal defect (AVSD) & Tetralogy of Fallot repair  
2019-22 - Paediatric cases only**



No	Hospital Name	Survival 30d
23	Dublin Our Lady's Children's Hospital	83%
1	Liverpool Alder Hey Hospital	100%
17	Leeds General Infirmary	100%
8	Newcastle Freeman Hospital	100%
4	Birmingham Children's Hospital	100%
13	London Evelina London Children's Hospital	100%
30	Southampton Wessex Cardiothoracic Centre	100%
6	Bristol Royal Hospital For Children	100%

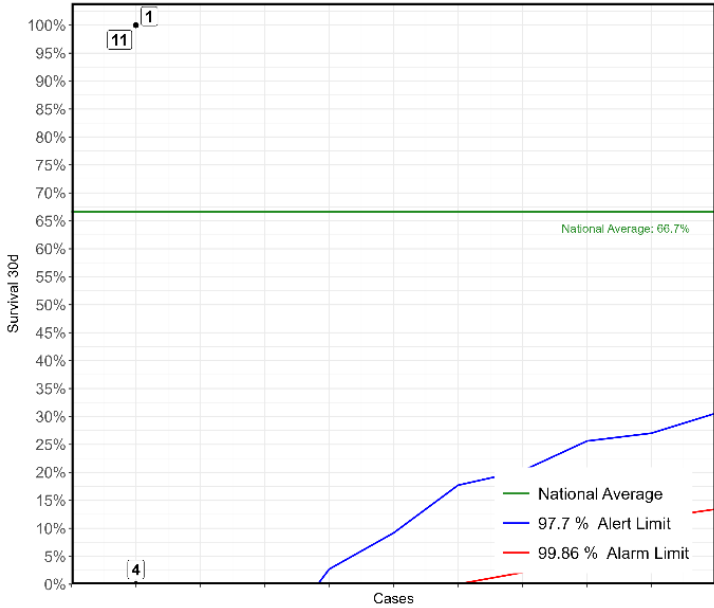


**Surgical: Complete atrioventricular septal defect (AVSD) repair  
2019-22 - Paediatric cases only**



No	Hospital Name	Survival 30d
23	Dublin Our Lady's Children's Hospital	96%
1	Liverpool Alder Hey Hospital	100%
11	London Great Ormond Street Hospital for Children	100%
4	Birmingham Children's Hospital	100%
17	Leeds General Infirmary	98%
30	Southampton Wessex Cardiothoracic Centre	100%
22	London Royal Brompton Hospital	92%
6	Bristol Royal Hospital For Children	96%
13	London Evelina London Children's Hospital	100%
12	Leicester Glenfield Hospital	100%
8	Newcastle Freeman Hospital	100%

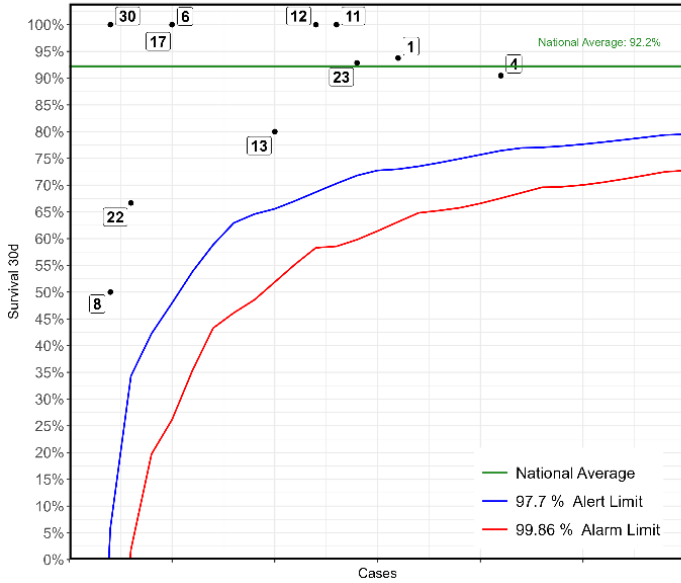
**Surgical: Senning or Mustard procedure (atrial switch)  
2019-22 - Paediatric cases only**



No	Hospital Name	Survival 30d
1	Liverpool Alder Hey Hospital	100%
4	Birmingham Children's Hospital	0%
11	London Great Ormond Street Hospital for Children	100%



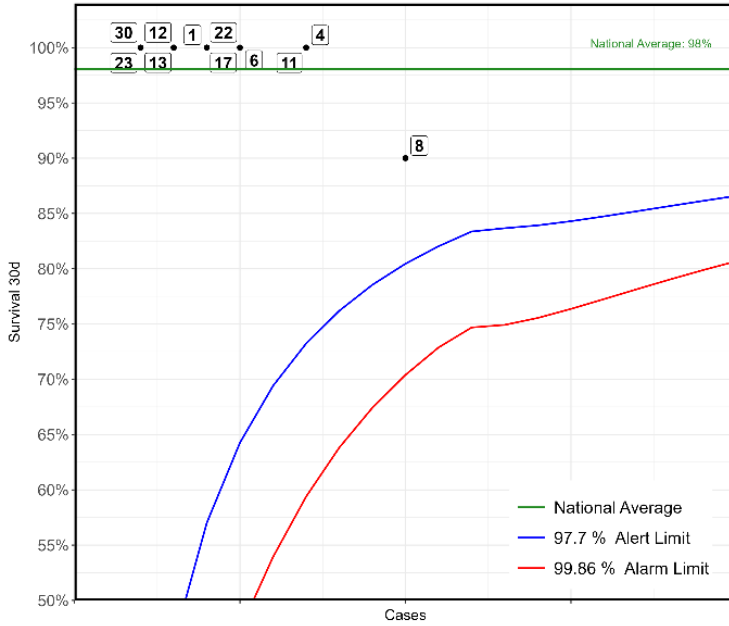
**Surgical: Systemic-to-pulmonary arterial shunt procedure (includes Blalock-Taussig & central shunts)  
2019-22 - Paediatric cases only**



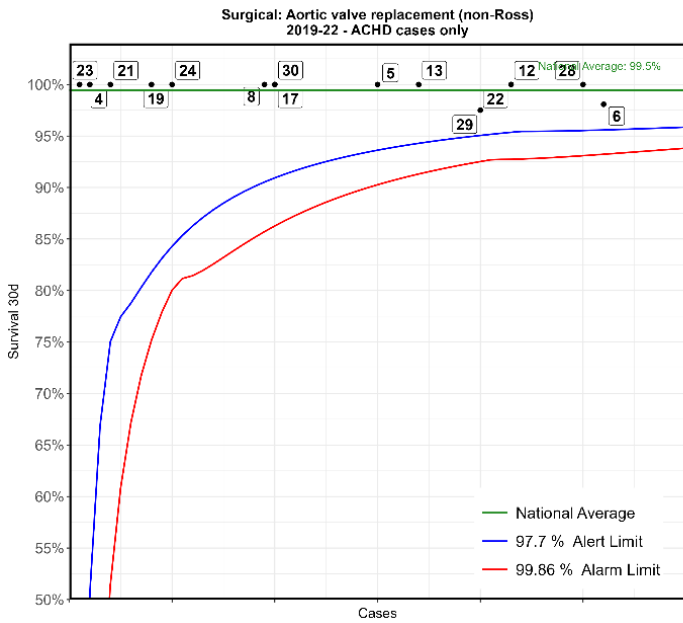
No	Hospital Name	Survival 30d
4	Birmingham Children's Hospital	90%
1	Liverpool Alder Hey Hospital	94%
23	Dublin Our Lady's Children's Hospital	93%
11	London Great Ormond Street Hospital for Children	100%
12	Leicester Glenfield Hospital	100%
13	London Evelina London Children's Hospital	80%
6	Bristol Royal Hospital For Children	100%
17	Leeds General Infirmary	100%
22	London Royal Brompton Hospital	67%
8	Newcastle Freeman Hospital	50%
30	Southampton Wessex Cardiothoracic Centre	100%

\*This Funnel plot includes 1 patient(s) at least from this centre who had 2 procedures within the same 30 day time period. The procedure for this patient has only been counted once in this display with respect to life status for statistical reasons to ensure the patient is not counted as alive or deceased twice over.

**Surgical: Aortic valve replacement (non-Ross)  
2019-22 - Paediatric cases only**

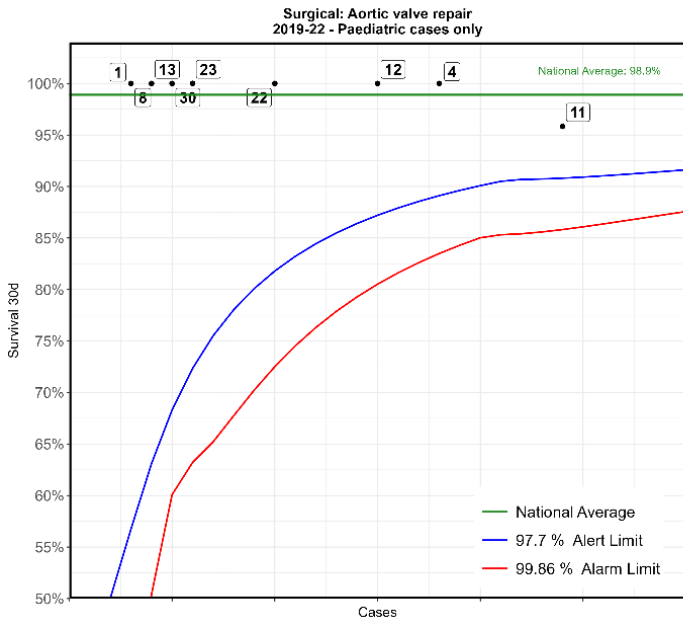


No	Hospital Name	Survival 30d
8	Newcastle Freeman Hospital	90%
4	Birmingham Children's Hospital	100%
11	London Great Ormond Street Hospital for Children	100%
6	Bristol Royal Hospital For Children	100%
1	Liverpool Alder Hey Hospital	100%
17	Leeds General Infirmary	100%
22	London Royal Brompton Hospital	100%
12	Leicester Glenfield Hospital	100%
13	London Evelina London Children's Hospital	100%
23	Dublin Our Lady's Children's Hospital	100%
30	Southampton Wessex Cardiothoracic Centre	100%

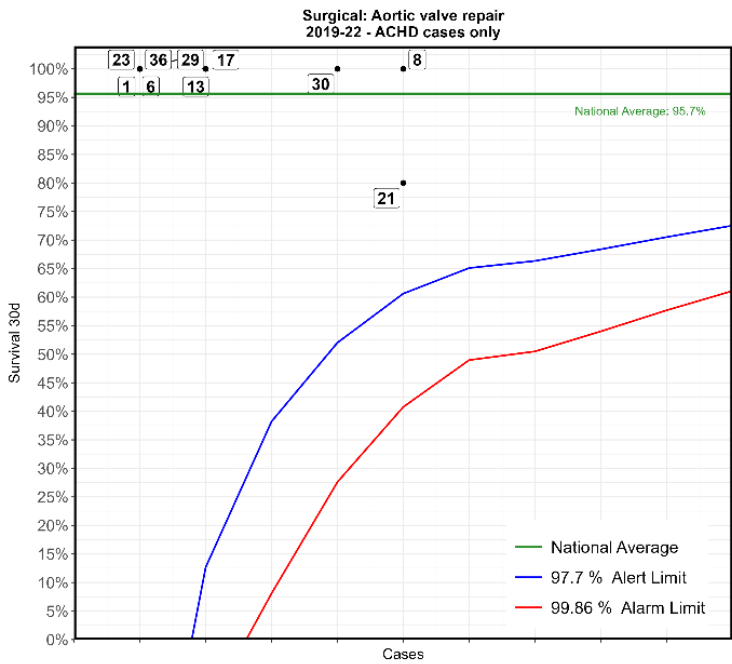


No	Hospital Name	Survival 30d
6	Bristol Royal Hospital For Children	98%
28	Belfast Royal Victoria Hospital	100%
12	Leicester Glenfield Hospital	100%
22	London Royal Brompton Hospital	100%
29	London Barts Heart Centre	98%
13	London Evelina London Children's Hospital	100%
5	Liverpool Heart and Chest Hospital	100%
17	Leeds General Infirmary	100%
30	Southampton Wessex Cardiothoracic Centre	100%
8	Newcastle Freeman Hospital	100%
24	Birmingham Queen Elizabeth Hospital	100%
19	Manchester Royal Infirmary	100%
21	Sheffield Northern General Hospital	100%
4	Birmingham Children's Hospital	100%
23	Dublin Our Lady's Children's Hospital	100%

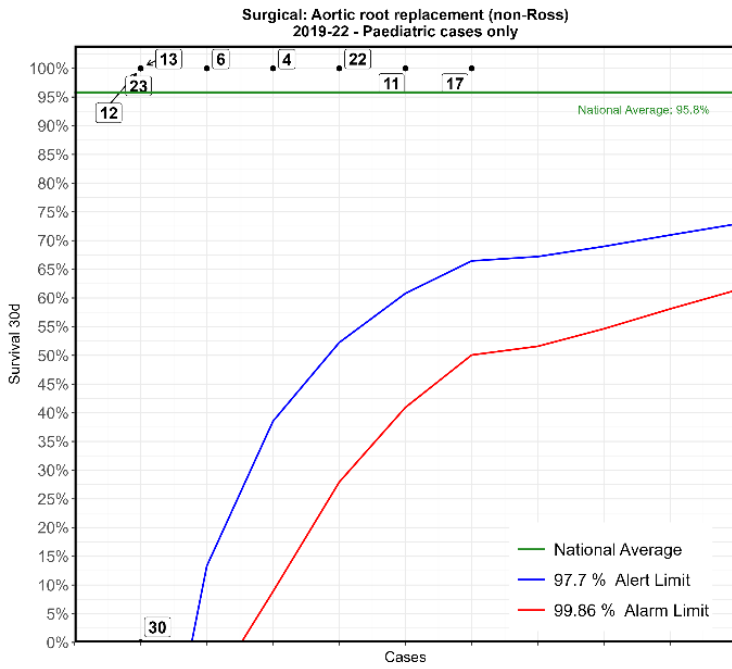
\*This Funnel plot includes 1 patient(s) at least from this centre who had 2 procedures within the same 30 day time period. The procedure for this patient has only been counted once in this display with respect to life status for statistical reasons to ensure the patient is not counted as alive or deceased twice over.



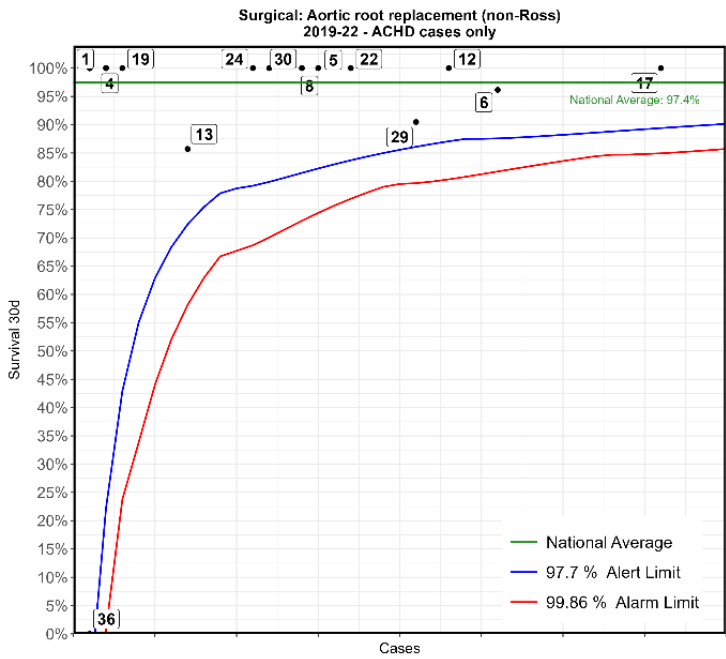
No	Hospital Name	Survival 30d
11	London Great Ormond Street Hospital for Children	96%
4	Birmingham Children's Hospital	100%
12	Leicester Glenfield Hospital	100%
22	London Royal Brompton Hospital	100%
23	Dublin Our Lady's Children's Hospital	100%
30	Southampton Wessex Cardiothoracic Centre	100%
13	London Evelina London Children's Hospital	100%
8	Newcastle Freeman Hospital	100%
1	Liverpool Alder Hey Hospital	100%



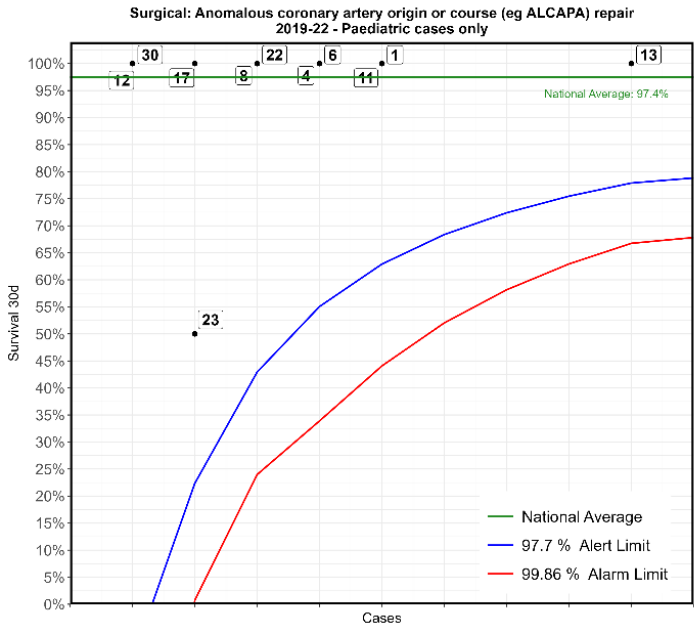
No	Hospital Name	Survival 30d
8	Newcastle Freeman Hospital	100%
21	Sheffield Northern General Hospital	80%
30	Southampton Wessex Cardiothoracic Centre	100%
13	London Evelina London Children's Hospital	100%
17	Leeds General Infirmary	100%
1	Liverpool Alder Hey Hospital	100%
6	Bristol Royal Hospital For Children	100%
23	Dublin Our Lady's Children's Hospital	100%
29	London Barts Heart Centre	100%
36	Cardiff University Hospital of Wales	100%



No	Hospital Name	Survival 30d
17	Leeds General Infirmary	100%
11	London Great Ormond Street Hospital for Children	100%
22	London Royal Brompton Hospital	100%
4	Birmingham Children's Hospital	100%
6	Bristol Royal Hospital For Children	100%
12	Leicester Glenfield Hospital	100%
13	London Evelina London Children's Hospital	100%
23	Dublin Our Lady's Children's Hospital	100%
30	Southampton Wessex Cardiothoracic Centre	0%



No	Hospital Name	Survival 30d
17	Leeds General Infirmary	100%
6	Bristol Royal Hospital For Children	96%
12	Leicester Glenfield Hospital	100%
29	London Barts Heart Centre	90%
22	London Royal Brompton Hospital	100%
5	Liverpool Heart and Chest Hospital	100%
8	Newcastle Freeman Hospital	100%
30	Southampton Wessex Cardiothoracic Centre	100%
24	Birmingham Queen Elizabeth Hospital	100%
13	London Evelina London Children's Hospital	86%
19	Manchester Royal Infirmary	100%
4	Birmingham Children's Hospital	100%
23	Dublin Our Lady's Children's Hospital	100%
1	Liverpool Alder Hey Hospital	100%
11	London Great Ormond Street Hospital for Children	100%
21	Sheffield Northern General Hospital	100%
28	Belfast Royal Victoria Hospital	100%
36	Cardiff University Hospital of Wales	0%



No	Hospital Name	Survival 30d
13	London Evelina London Children's Hospital	100%
1	Liverpool Alder Hey Hospital	100%
*11	London Great Ormond Street Hospital for Children	100%
4	Birmingham Children's Hospital	100%
6	Bristol Royal Hospital For Children	100%
8	Newcastle Freeman Hospital	100%
22	London Royal Brompton Hospital	100%
17	Leeds General Infirmary	100%
23	Dublin Our Lady's Children's Hospital	50%
12	Leicester Glenfield Hospital	100%
30	Southampton Wessex Cardiothoracic Centre	100%

\*This Funnel plot includes 1 patient(s) at least from this centre who had 2 procedures within the same 30 day time period. The procedure for this patient has only been counted once in this display with respect to life status for statistical reasons to ensure the patient is not counted as alive or deceased twice over.