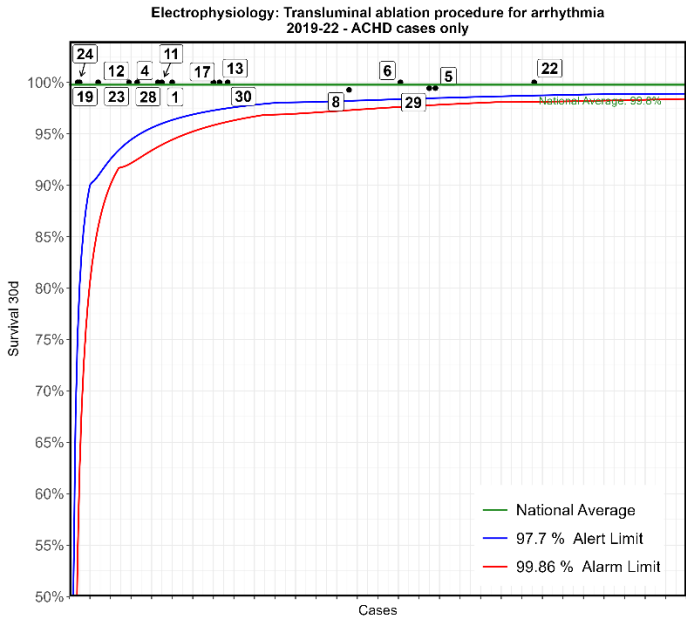


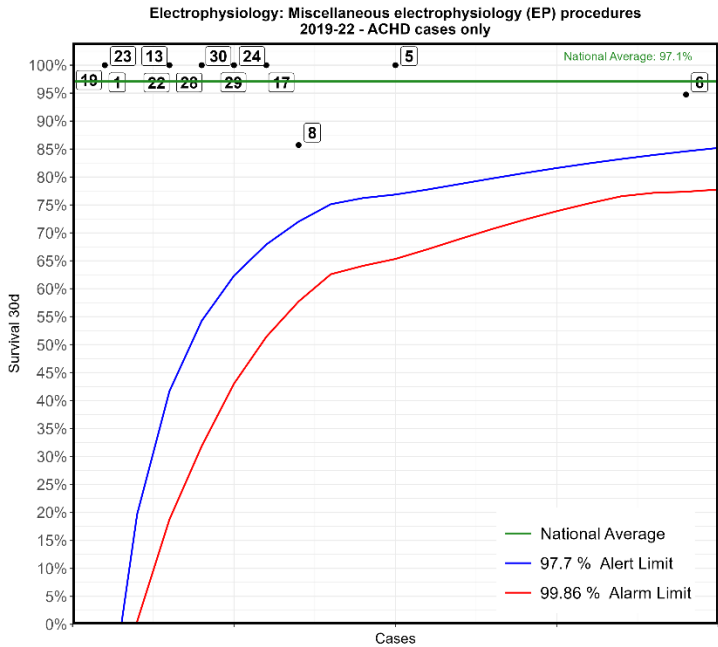


# Electrophysiology (all) 2019/22



No	Hospital Name	Survival 30d
**22	London Royal Brompton Hospital	100%
*5	Liverpool Heart and Chest Hospital	99%
29	London Barts Heart Centre	99%
**6	Bristol Royal Hospital For Children	100%
*8	Newcastle Freeman Hospital	99%
30	Southampton Wessex Cardiothoracic Centre	100%
13	London Evelina London Children's Hospital	100%
17	Leeds General Infirmary	100%
1	Liverpool Alder Hey Hospital	100%
11	London Great Ormond Street Hospital for Children	100%
*28	Belfast Royal Victoria Hospital	100%
4	Birmingham Children's Hospital	100%
***23	Dublin Our Lady's Children's Hospital	100%
12	Leicester Glenfield Hospital	100%
24	Birmingham Queen Elizabeth Hospital	100%
*19	Manchester Royal Infirmary	100%

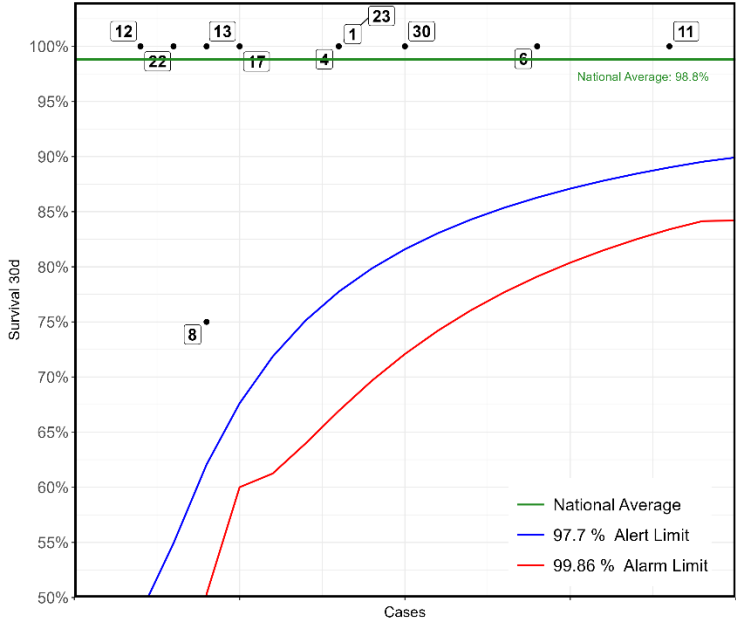
\*This Funnel plot includes 1 patient(s) at least from this centre who had 2 procedures within the same 30 day time period. The procedure for this patient has only been counted once in this display with respect to life status for statistical reasons to ensure the patient is not counted as alive or deceased twice over.



No	Hospital Name	Survival 30d
6	Bristol Royal Hospital For Children	95%
5	Liverpool Heart and Chest Hospital	100%
8	Newcastle Freeman Hospital	86%
17	Leeds General Infirmary	100%
24	Birmingham Queen Elizabeth Hospital	100%
29	London Barts Heart Centre	100%
28	Belfast Royal Victoria Hospital	100%
30	Southampton Wessex Cardiothoracic Centre	100%
13	London Evelina London Children's Hospital	100%
22	London Royal Brompton Hospital	100%
1	Liverpool Alder Hey Hospital	100%
19	Manchester Royal Infirmary	100%
23	Dublin Our Lady's Children's Hospital	100%

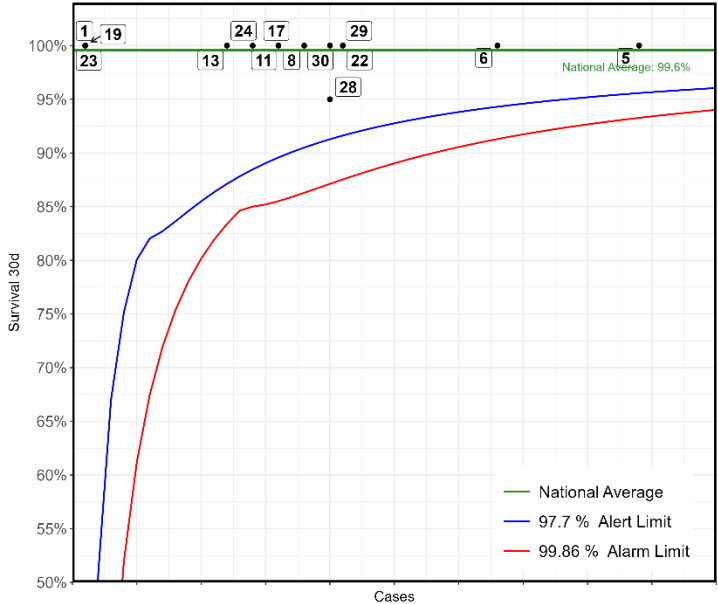


Electrophysiology: Miscellaneous electrophysiology (EP) procedures  
2019-22 - Paediatric cases only



No	Hospital Name	Survival 30d
11	London Great Ormond Street Hospital for Children	100%
6	Bristol Royal Hospital For Children	100%
30	Southampton Wessex Cardiothoracic Centre	100%
1	Liverpool Alder Hey Hospital	100%
4	Birmingham Children's Hospital	100%
23	Dublin Our Lady's Children's Hospital	100%
17	Leeds General Infirmary	100%
8	Newcastle Freeman Hospital	75%
13	London Evelina London Children's Hospital	100%
22	London Royal Brompton Hospital	100%
12	Leicester Glenfield Hospital	100%

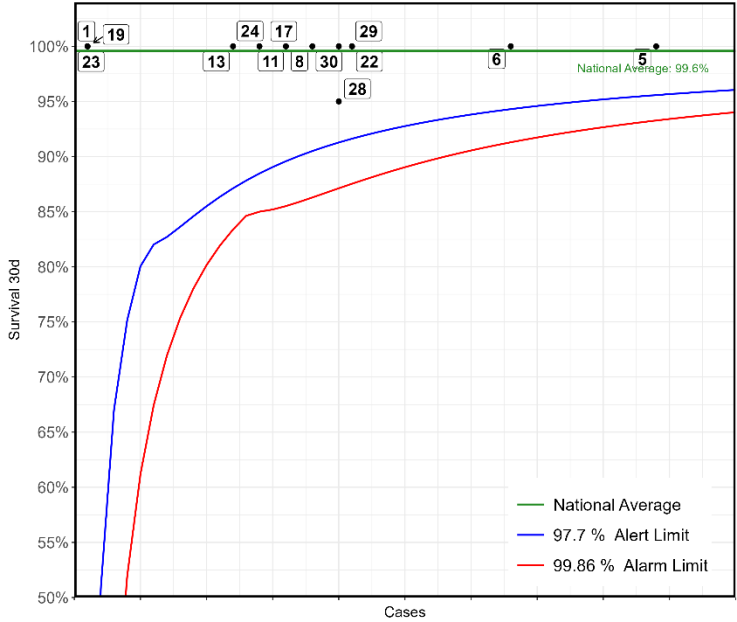
Electrophysiology: Implantable cardioverter & defibrillator (ICD) implantation  
2019-22 - ACHD cases only



No	Hospital Name	Survival 30d
5	Liverpool Heart and Chest Hospital	100%
6	Bristol Royal Hospital For Children	100%
22	London Royal Brompton Hospital	100%
29	London Barts Heart Centre	100%
28	Belfast Royal Victoria Hospital	95%
30	Southampton Wessex Cardiothoracic Centre	100%
8	Newcastle Freeman Hospital	100%
11	London Great Ormond Street Hospital for Children	100%
17	Leeds General Infirmary	100%
24	Birmingham Queen Elizabeth Hospital	100%
13	London Evelina London Children's Hospital	100%
1	Liverpool Alder Hey Hospital	100%
19	Manchester Royal Infirmary	100%
23	Dublin Our Lady's Children's Hospital	100%

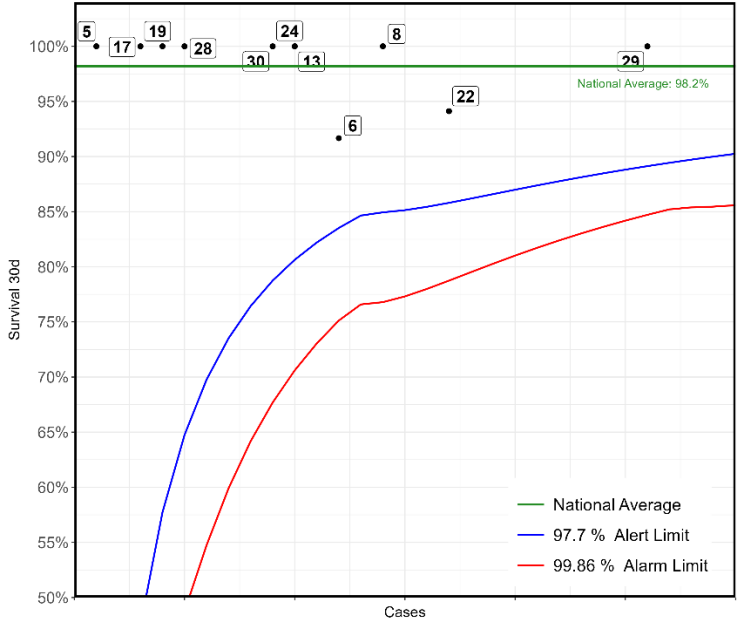


**Electrophysiology: Implantable cardioverter & defibrillator (ICD) implantation  
2019-22 - ACHD cases only**



No	Hospital Name	Survival 30d
5	Liverpool Heart and Chest Hospital	100%
6	Bristol Royal Hospital For Children	100%
22	London Royal Brompton Hospital	100%
29	London Barts Heart Centre	100%
28	Belfast Royal Victoria Hospital	95%
30	Southampton Wessex Cardiothoracic Centre	100%
8	Newcastle Freeman Hospital	100%
11	London Great Ormond Street Hospital for Children	100%
17	Leeds General Infirmary	100%
24	Birmingham Queen Elizabeth Hospital	100%
13	London Evelina London Children's Hospital	100%
1	Liverpool Alder Hey Hospital	100%
19	Manchester Royal Infirmary	100%
23	Dublin Our Lady's Children's Hospital	100%

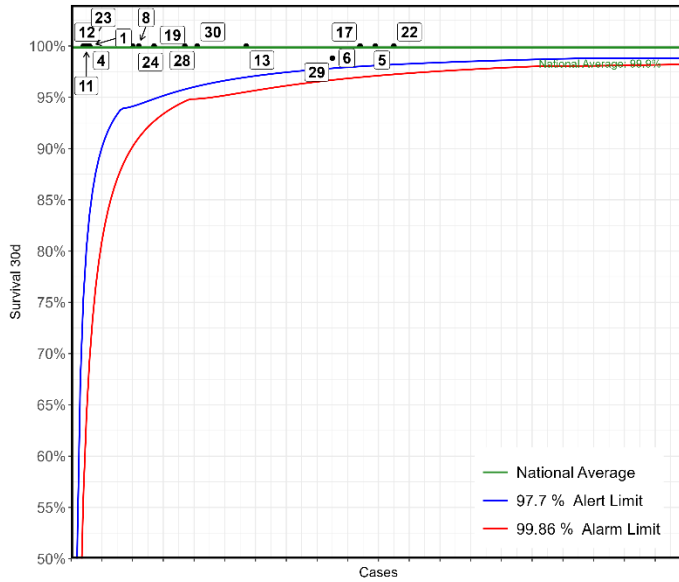
**Electrophysiology: Biventricular implantable cardioverter & defibrillator (ICD) implantation or pacemaker system placement  
2019-22 - ACHD cases only**



No	Hospital Name	Survival 30d
29	London Barts Heart Centre	100%
22	London Royal Brompton Hospital	94%
8	Newcastle Freeman Hospital	100%
6	Bristol Royal Hospital For Children	92%
13	London Evelina London Children's Hospital	100%
24	Birmingham Queen Elizabeth Hospital	100%
30	Southampton Wessex Cardiothoracic Centre	100%
28	Belfast Royal Victoria Hospital	100%
19	Manchester Royal Infirmary	100%
17	Leeds General Infirmary	100%
5	Liverpool Heart and Chest Hospital	100%



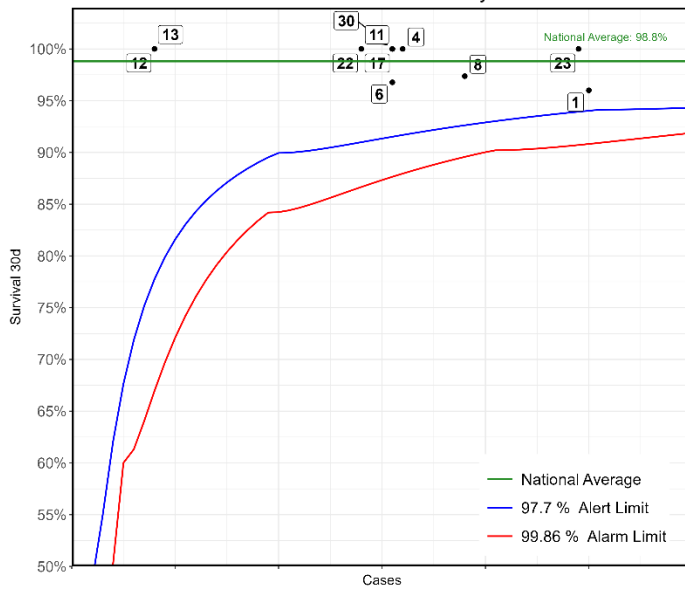
Electrophysiology: Pacemaker system placement or generator replacement - surgical  
2019-22 - ACHD cases only



No	Hospital Name	Survival 30d
*22	London Royal Brompton Hospital	100%
5	Liverpool Heart and Chest Hospital	100%
6	Bristol Royal Hospital For Children	100%
17	Leeds General Infirmary	100%
29	London Barts Heart Centre	99%
13	London Evelina London Children's Hospital	100%
30	Southampton Wessex Cardiothoracic Centre	100%
28	Belfast Royal Victoria Hospital	100%
19	Manchester Royal Infirmary	100%
8	Newcastle Freeman Hospital	100%
24	Birmingham Queen Elizabeth Hospital	100%
1	Liverpool Alder Hey Hospital	100%
4	Birmingham Children's Hospital	100%
23	Dublin Our Lady's Children's Hospital	100%
11	London Great Ormond Street Hospital for Children	100%
12	Leicester Glenfield Hospital	100%

\*This Funnel plot includes 1 patient(s) at least from this centre who had 2 procedures within the same 30 day time period. The procedure for this patient has only been counted once in this display with respect to life status for statistical reasons to ensure the patient is not counted as alive or deceased twice over.

Electrophysiology: Permanent epicardial pacemaker system placement  
2019-22 - Paediatric cases only



No	Hospital Name	Survival 30d
**1	Liverpool Alder Hey Hospital	96%
23	Dublin Our Lady's Children's Hospital	100%
***8	Newcastle Freeman Hospital	97%
4	Birmingham Children's Hospital	100%
6	Bristol Royal Hospital For Children	97%
11	London Great Ormond Street Hospital for Children	100%
17	Leeds General Infirmary	100%
30	Southampton Wessex Cardiothoracic Centre	100%
*22	London Royal Brompton Hospital	100%
12	Leicester Glenfield Hospital	100%
13	London Evelina London Children's Hospital	100%

\*This Funnel plot includes 1 patient(s) at least from this centre who had 2 procedures within the same 30 day time period. The procedure for this patient has only been counted once in this display with respect to life status for statistical reasons to ensure the patient is not counted as alive or deceased twice over.