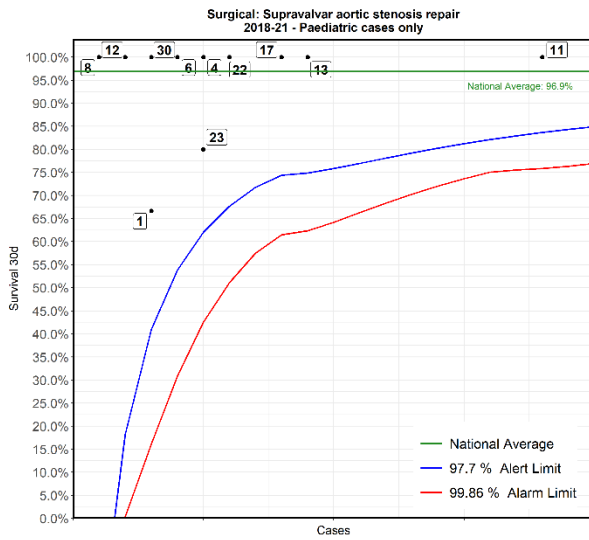
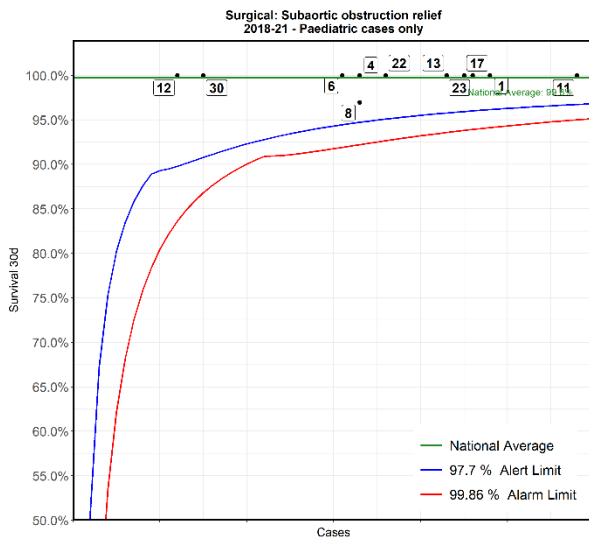


No.	Hospital Name	Survival 30d
13	London Evelina London Children's Hospital	90%
11	London Great Ormond Street Hospital for Children	100%
4	Birmingham Children's Hospital	94%
6	Bristol Royal Hospital For Children	94%
12	Leicester Glenfield Hospital	100%
23	Dublin Our Lady's Children's Hospital	100%
17	Leeds General Infirmary	100%
30	Southampton Wessex Cardiothoracic Centre	92%
22	London Royal Brompton Hospital	100%
1	Liverpool Alder Hey Hospital	100%
8	Newcastle Freeman Hospital	100%

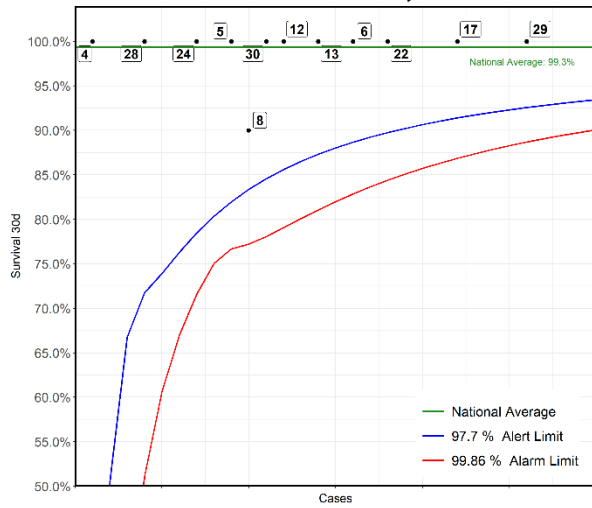


No.	Hospital Name	Survival 30d
11	London Great Ormond Street Hospital for Children	100%
13	London Evelina London Children's Hospital	100%
17	Leeds General Infirmary	100%
22	London Royal Brompton Hospital	100%
4	Birmingham Children's Hospital	100%
23	Dublin Our Lady's Children's Hospital	80%
6	Bristol Royal Hospital For Children	100%
1	Liverpool Alder Hey Hospital	67%
30	Southampton Wessex Cardiothoracic Centre	100%
12	Leicester Glenfield Hospital	100%
8	Newcastle Freeman Hospital	100%



No.	Hospital Name	Survival 30d
11	London Great Ormond Street Hospital for Children	100%
1	Liverpool Alder Hey Hospital	100%
17	Leeds General Infirmary	100%
23	Dublin Our Lady's Children's Hospital	100%
13	London Evelina London Children's Hospital	100%
22	London Royal Brompton Hospital	100%
4	Birmingham Children's Hospital	100%
8	Newcastle Freeman Hospital	97%
6	Bristol Royal Hospital For Children	100%
30	Southampton Wessex Cardiothoracic Centre	100%
12	Leicester Glenfield Hospital	100%

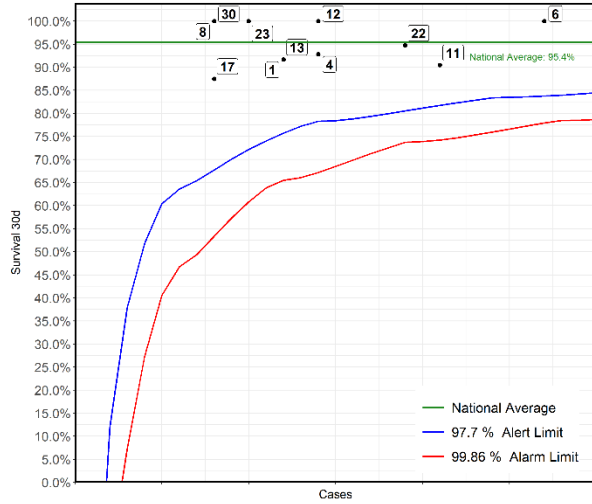
I: Sinus venosus atrial septal defect (ASD) closure and partially anomalous pulmonary venous connection (PAPVC) repair  
2018-21 - ACHD cases only



No	Hospital Name	Survival 30d
29	London Barts Heart Centre	100%
17	Leeds General Infirmary	100%
*22	London Royal Brompton Hospital	100%
6	Bristol Royal Hospital For Children	100%
13	London Evelina London Children's Hospital	100%
12	Leicester Glenfield Hospital	100%
30	Southampton Wessex Cardiothoracic Centre	100%
8	Newcastle Freeman Hospital	90%
5	Liverpool Heart and Chest Hospital	100%
24	Birmingham Queen Elizabeth Hospital	100%
28	Belfast Royal Victoria Hospital	100%
4	Birmingham Children's Hospital	100%

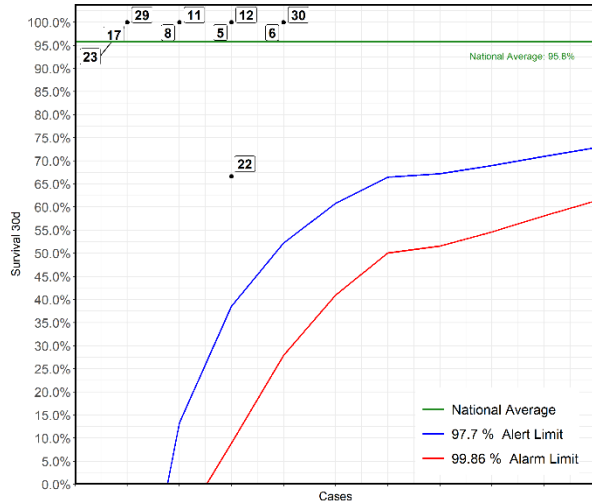
\*This Funnel plot includes 1 patient(s) at least from this centre who had 2 procedures within the same 30 day time period. The procedure for this patient has only been counted once in this display with respect to life status for statistical reasons to ensure the patient is not counted as alive or deceased twice over.

Surgical: Right ventricle to pulmonary artery conduit construction  
2018-21 - Paediatric cases only



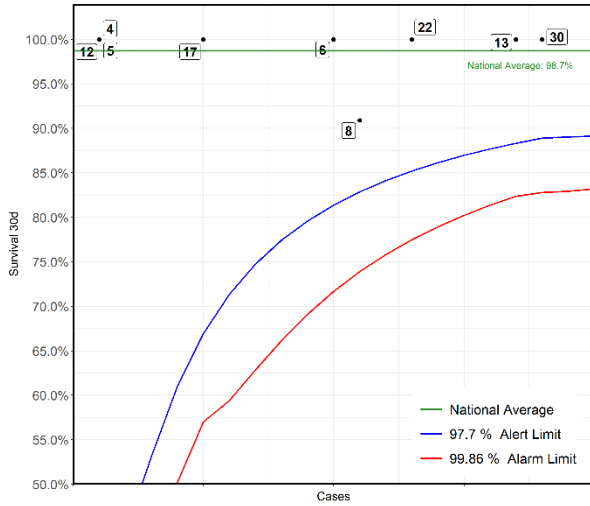
No	Hospital Name	Survival 30d
6	Bristol Royal Hospital For Children	100%
11	London Great Ormond Street Hospital for Children	90%
22	London Royal Brompton Hospital	95%
4	Birmingham Children's Hospital	93%
12	Leicester Glenfield Hospital	100%
1	Liverpool Alder Hey Hospital	92%
13	London Evelina London Children's Hospital	92%
23	Dublin Our Lady's Children's Hospital	100%
8	Newcastle Freeman Hospital	100%
17	Leeds General Infirmary	88%
30	Southampton Wessex Cardiothoracic Centre	100%

Surgical: Right ventricle to pulmonary artery conduit construction  
2018-21 - ACHD cases only



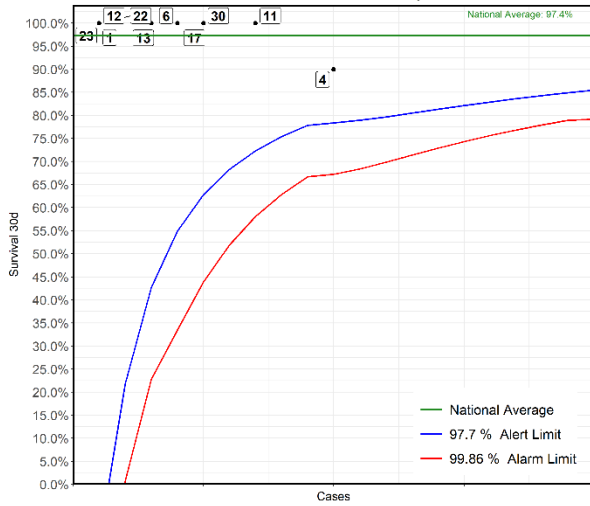
No	Hospital Name	Survival 30d
6	Bristol Royal Hospital For Children	100%
30	Southampton Wessex Cardiothoracic Centre	100%
5	Liverpool Heart and Chest Hospital	100%
12	Leicester Glenfield Hospital	100%
22	London Royal Brompton Hospital	67%
8	Newcastle Freeman Hospital	100%
11	London Great Ormond Street Hospital for Children	100%
17	Leeds General Infirmary	100%
23	Dublin Our Lady's Children's Hospital	100%
29	London Barts Heart Centre	100%

**Surgical: Ross procedure (aortic valve-root replacement with pulmonary autograph)  
2018-21 - ACHD cases only**



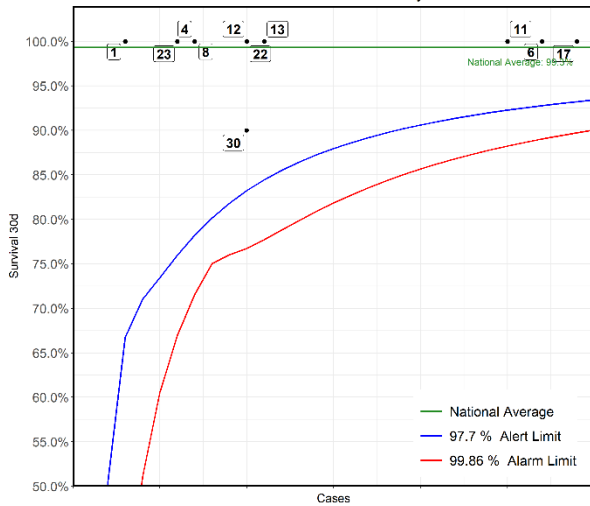
No	Hospital Name	Survival 30d
30	Southampton Wessex Cardiothoracic Centre	100%
13	London Evelina London Children's Hospital	100%
22	London Royal Brompton Hospital	100%
8	Newcastle Freeman Hospital	91%
6	Bristol Royal Hospital For Children	100%
17	Leeds General Infirmary	100%
4	Birmingham Children's Hospital	100%
5	Liverpool Heart and Chest Hospital	100%
12	Leicester Glenfield Hospital	100%

**Surgical: Pulmonary vein stenosis repair  
2018-21 - Paediatric cases only**

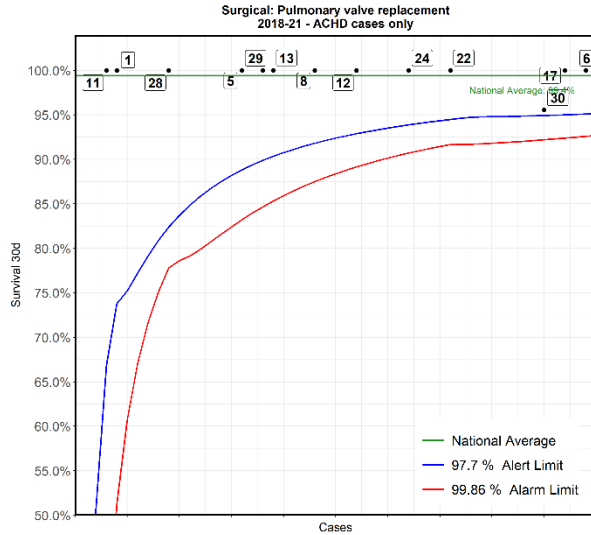


No	Hospital Name	Survival 30d
4	Birmingham Children's Hospital	90%
11	London Great Ormond Street Hospital for Children	100%
17	Leeds General Infirmary	100%
30	Southampton Wessex Cardiothoracic Centre	100%
6	Bristol Royal Hospital For Children	100%
13	London Evelina London Children's Hospital	100%
1	Liverpool Alder Hey Hospital	100%
12	Leicester Glenfield Hospital	100%
22	London Royal Brompton Hospital	100%
23	Dublin Our Lady's Children's Hospital	100%

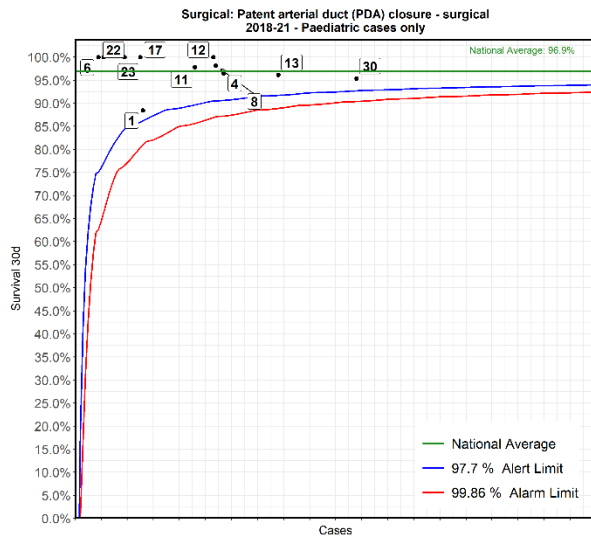
**Surgical: Pulmonary valve replacement  
2018-21 - Paediatric cases only**



No	Hospital Name	Survival 30d
17	Leeds General Infirmary	100%
6	Bristol Royal Hospital For Children	100%
11	London Great Ormond Street Hospital for Children	100%
13	London Evelina London Children's Hospital	100%
22	London Royal Brompton Hospital	100%
12	Leicester Glenfield Hospital	100%
30	Southampton Wessex Cardiothoracic Centre	90%
8	Newcastle Freeman Hospital	100%
4	Birmingham Children's Hospital	100%
23	Dublin Our Lady's Children's Hospital	100%
1	Liverpool Alder Hey Hospital	100%

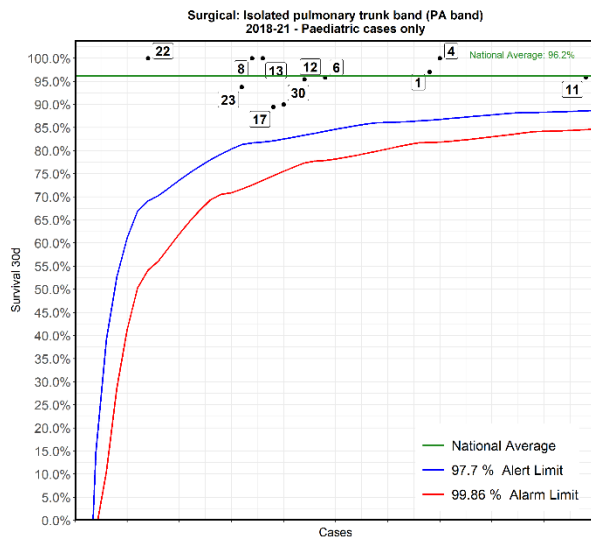


No	Hospital Name	Survival 30d
6	Bristol Royal Hospital For Children	100%
17	Leeds General Infirmary	100%
30	Southampton Wessex Cardiothoracic Centre	96%
22	London Royal Brompton Hospital	100%
24	Birmingham Queen Elizabeth Hospital	100%
12	Leicester Glenfield Hospital	100%
8	Newcastle Freeman Hospital	100%
13	London Evelina London Children's Hospital	100%
29	London Barts Heart Centre	100%
5	Liverpool Heart and Chest Hospital	100%
28	Belfast Royal Victoria Hospital	100%
1	Liverpool Alder Hey Hospital	100%
11	London Great Ormond Street Hospital for Children	100%



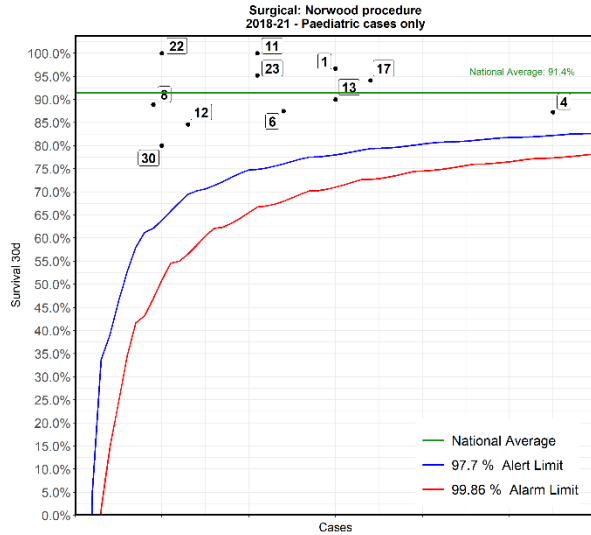
No	Hospital Name	Survival 30d
30	Southampton Wessex Cardiothoracic Centre	95%
13	London Evelina London Children's Hospital	96%
4	Birmingham Children's Hospital	98%
8	Newcastle Freeman Hospital	98%
12	Leicester Glenfield Hospital	100%
*11	London Great Ormond Street Hospital for Children	98%
1	Liverpool Alder Hey Hospital	88%
17	Leeds General Infirmary	100%
23	Dublin Our Lady's Children's Hospital	100%
22	London Royal Brompton Hospital	100%
6	Bristol Royal Hospital For Children	100%

\*This Funnel plot includes 1 patient(s) at least from this centre who had 2 procedures within the same 30 day time period.  
The procedure for this patient has only been counted once in this display with respect to life status for statistical reasons to ensure the patient is not counted as alive or deceased twice over.

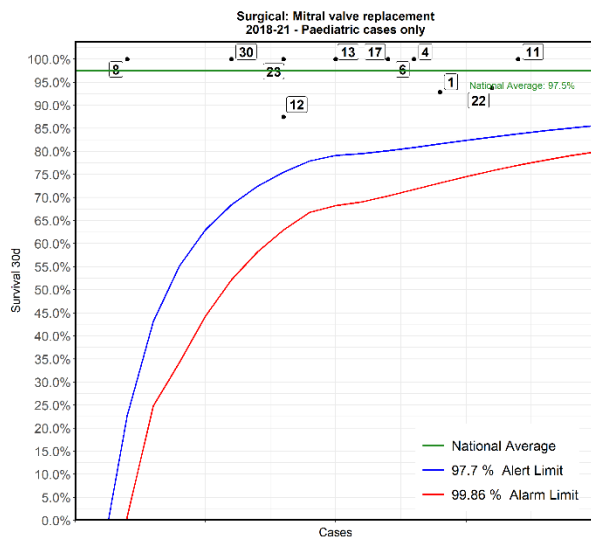


No	Hospital Name	Survival 30d
11	London Great Ormond Street Hospital for Children	96%
4	Birmingham Children's Hospital	100%
*1	Liverpool Alder Hey Hospital	97%
6	Bristol Royal Hospital For Children	96%
12	Leicester Glenfield Hospital	95%
30	Southampton Wessex Cardiothoracic Centre	90%
17	Leeds General Infirmary	89%
13	London Evelina London Children's Hospital	100%
8	Newcastle Freeman Hospital	100%
23	Dublin Our Lady's Children's Hospital	94%
22	London Royal Brompton Hospital	100%

\*This Funnel plot includes 1 patient(s) at least from this centre who had 2 procedures within the same 30 day time period.  
The procedure for this patient has only been counted once in this display with respect to life status for statistical reasons to ensure the patient is not counted as alive or deceased twice over.

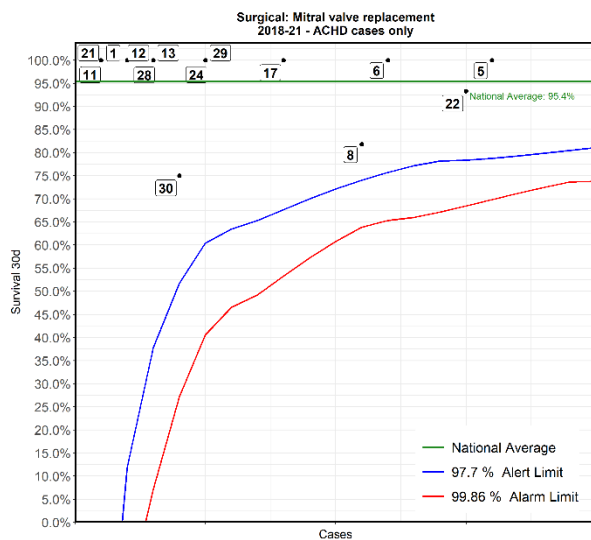


No	Hospital Name	Survival 30d
4	Birmingham Children's Hospital	87%
17	Leeds General Infirmary	94%
1	Liverpool Alder Hey Hospital	97%
13	London Evelina London Children's Hospital	90%
6	Bristol Royal Hospital For Children	88%
11	London Great Ormond Street Hospital for Children	100%
23	Dublin Our Lady's Children's Hospital	95%
12	Leicester Glenfield Hospital	85%
22	London Royal Brompton Hospital	100%
30	Southampton Wessex Cardiothoracic Centre	80%
8	Newcastle Freeman Hospital	89%



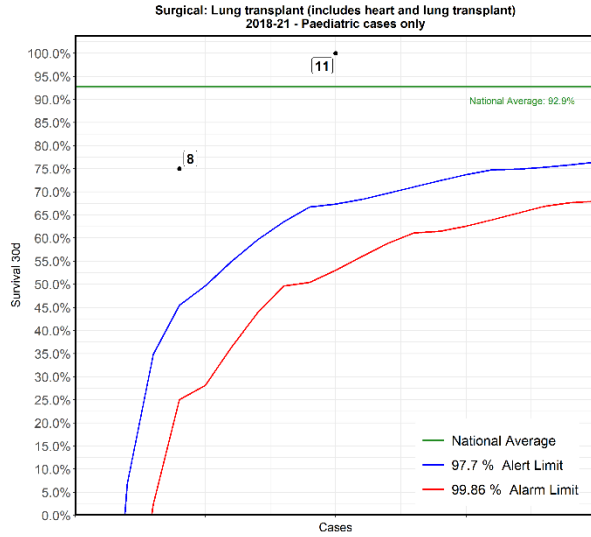
No	Hospital Name	Survival 30d
11	London Great Ormond Street Hospital for Children	100%
22	London Royal Brompton Hospital	94%
1	Liverpool Alder Hey Hospital	93%
4	Birmingham Children's Hospital	100%
6	Bristol Royal Hospital For Children	100%
17	Leeds General Infirmary	100%
13	London Evelina London Children's Hospital	100%
12	Leicester Glenfield Hospital	88%
23	Dublin Our Lady's Children's Hospital	100%
30	Southampton Wessex Cardiothoracic Centre	100%
8	Newcastle Freeman Hospital	100%

\*This Funnel plot includes 1 patient(s) at least from this centre who had 2 procedures within the same 30 day time period.  
The procedure for this patient has only been counted once in this display with respect to life status for statistical reasons to ensure the patient is not counted as alive or deceased twice over.

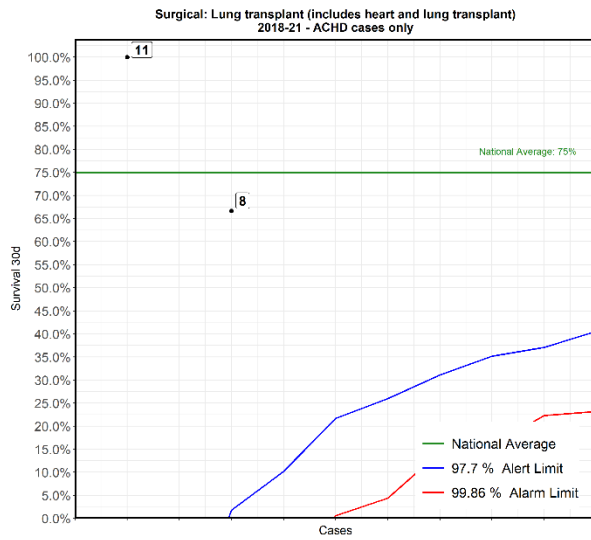


No	Hospital Name	Survival 30d
5	Liverpool Heart and Chest Hospital	100%
22	London Royal Brompton Hospital	93%
6	Bristol Royal Hospital For Children	100%
8	Newcastle Freeman Hospital	82%
17	Leeds General Infirmary	100%
24	Birmingham Queen Elizabeth Hospital	100%
29	London Barts Heart Centre	100%
30	Southampton Wessex Cardiothoracic Centre	75%
13	London Evelina London Children's Hospital	100%
28	Belfast Royal Victoria Hospital	100%
12	Leicester Glenfield Hospital	100%
1	Liverpool Alder Hey Hospital	100%
11	London Great Ormond Street Hospital for Children	100%
21	Sheffield Northern General Hospital	100%

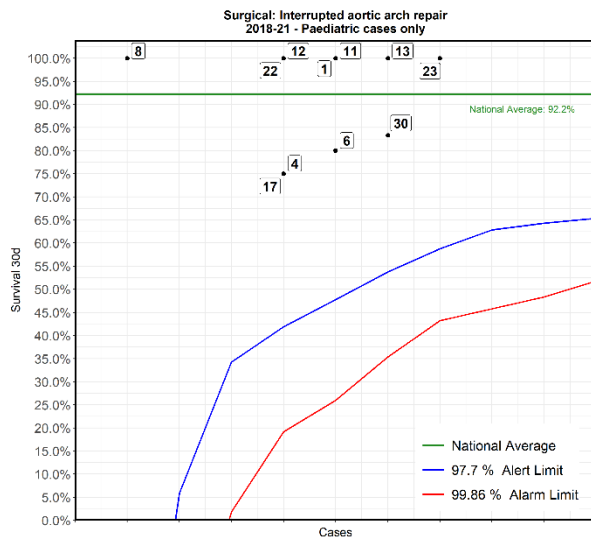
\*This Funnel plot includes 1 patient(s) at least from this centre who had 2 procedures within the same 30 day time period.  
The procedure for this patient has only been counted once in this display with respect to life status for statistical reasons to ensure the patient is not counted as alive or deceased twice over.



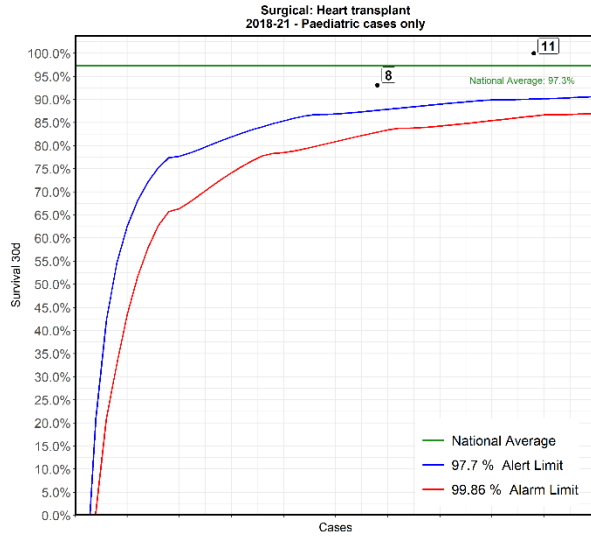
No	Hospital Name	Survival 30d
11	London Great Ormond Street Hospital for Children	100%
8	Newcastle Freeman Hospital	75%



No	Hospital Name	Survival 30d
8	Newcastle Freeman Hospital	67%
11	London Great Ormond Street Hospital for Children	100%

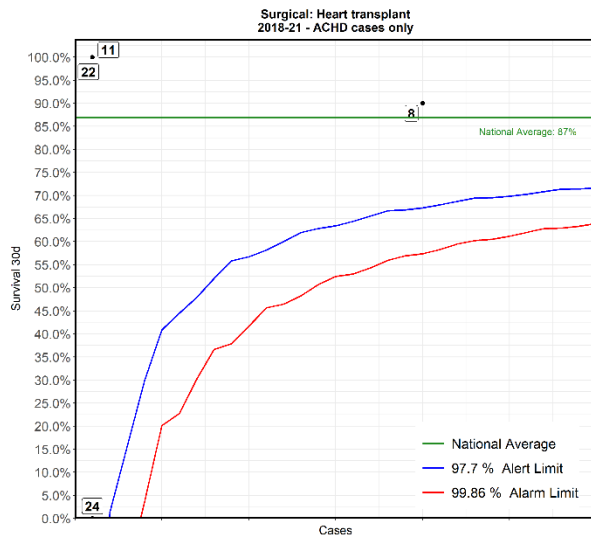


No	Hospital Name	Survival 30d
23	Dublin Our Lady's Children's Hospital	100%
13	London Evelina London Children's Hospital	100%
30	Southampton Wessex Cardiothoracic Centre	83%
1	Liverpool Alder Hey Hospital	100%
6	Bristol Royal Hospital For Children	80%
11	London Great Ormond Street Hospital for Children	100%
4	Birmingham Children's Hospital	75%
12	Leicester Glenfield Hospital	100%
17	Leeds General Infirmary	75%
22	London Royal Brompton Hospital	100%
8	Newcastle Freeman Hospital	100%

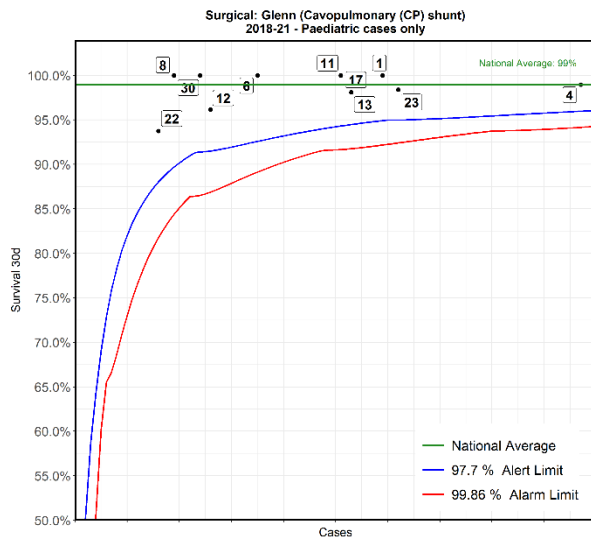


No	Hospital Name	Survival 30d
11	London Great Ormond Street Hospital for Children	100%
8	Newcastle Freeman Hospital	93%

\*This Funnel plot includes 1 patient(s) at least from this centre who had 2 procedures within the same 30 day time period.  
The procedure for this patient has only been counted once in this display with respect to life status for statistical reasons to ensure the patient is not counted as alive or deceased twice over.



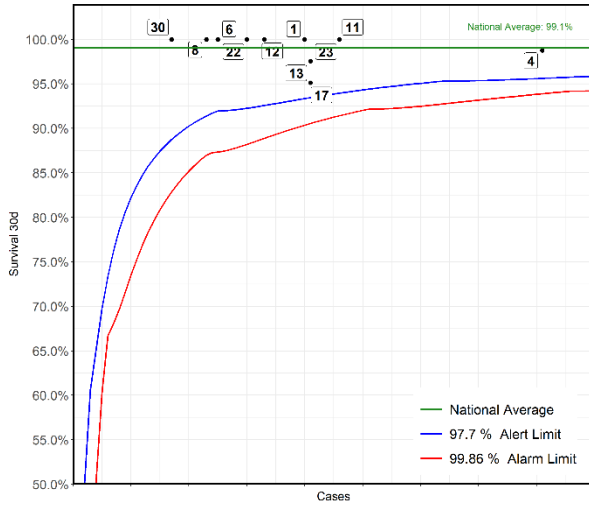
No	Hospital Name	Survival 30d
8	Newcastle Freeman Hospital	90%
11	London Great Ormond Street Hospital for Children	100%
22	London Royal Brompton Hospital	100%
24	Birmingham Queen Elizabeth Hospital	0%



No	Hospital Name	Survival 30d
4	Birmingham Children's Hospital	99%
23	Dublin Our Lady's Children's Hospital	98%
1	Liverpool Alder Hey Hospital	100%
13	London Evelina London Children's Hospital	98%
*11	London Great Ormond Street Hospital for Children	100%
17	Leeds General Infirmary	100%
*6	Bristol Royal Hospital For Children	100%
12	Leicester Glenfield Hospital	96%
30	Southampton Wessex Cardiothoracic Centre	100%
**8	Newcastle Freeman Hospital	100%
22	London Royal Brompton Hospital	94%

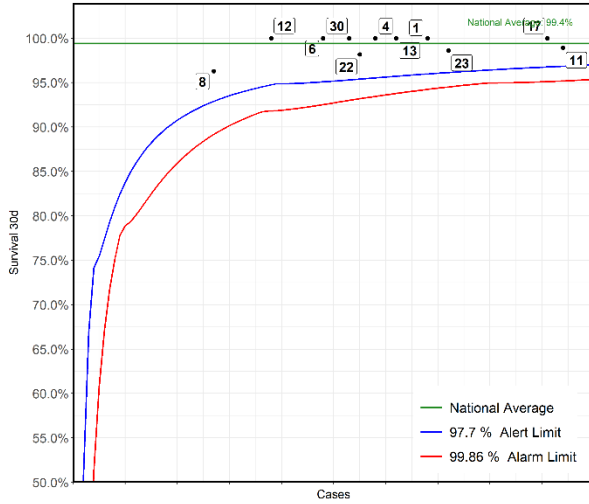
\*This Funnel plot includes 1 patient(s) at least from this centre who had 2 procedures within the same 30 day time period.  
The procedure for this patient has only been counted once in this display with respect to life status for statistical reasons to ensure the patient is not counted as alive or deceased twice over.

**Surgical: Fontan or Total Cavopulmonary Connection (TCPC)**  
2018-21 - Paediatric cases only



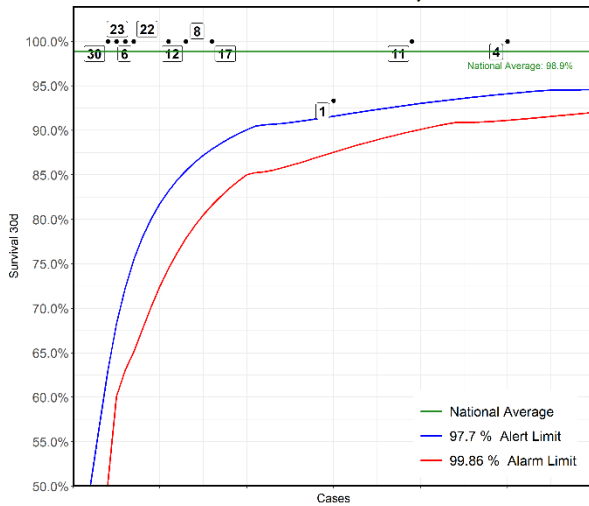
No	Hospital Name	Survival 30d
4	Birmingham Children's Hospital	99%
11	London Great Ormond Street Hospital for Children	100%
23	Dublin Our Lady's Children's Hospital	100%
13	London Evelina London Children's Hospital	98%
17	Leeds General Infirmary	95%
1	Liverpool Alder Hey Hospital	100%
12	Leicester Glenfield Hospital	100%
22	London Royal Brompton Hospital	100%
6	Bristol Royal Hospital For Children	100%
8	Newcastle Freeman Hospital	100%
30	Southampton Wessex Cardiothoracic Centre	100%

**Surgical: Tetralogy of Fallot and Fallot-type double outlet right ventricle repair**  
2018-21 - Paediatric cases only

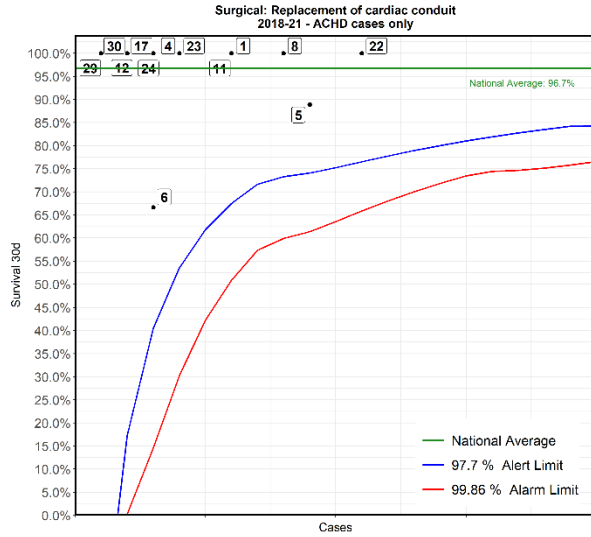


No	Hospital Name	Survival 30d
11	London Great Ormond Street Hospital for Children	99%
17	Leeds General Infirmary	100%
23	Dublin Our Lady's Children's Hospital	99%
1	Liverpool Alder Hey Hospital	100%
13	London Evelina London Children's Hospital	100%
4	Birmingham Children's Hospital	100%
22	London Royal Brompton Hospital	98%
30	Southampton Wessex Cardiothoracic Centre	100%
6	Bristol Royal Hospital For Children	100%
12	Leicester Glenfield Hospital	100%
8	Newcastle Freeman Hospital	96%

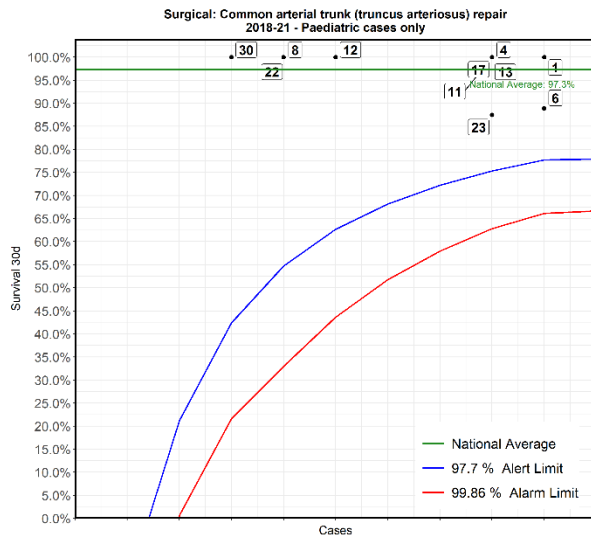
**Surgical: Replacement of cardiac conduit**  
2018-21 - Paediatric cases only



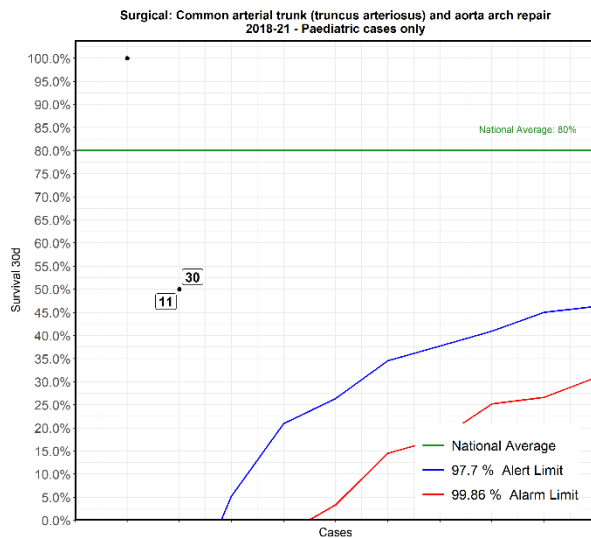
No	Hospital Name	Survival 30d
4	Birmingham Children's Hospital	100%
11	London Great Ormond Street Hospital for Children	100%
1	Liverpool Alder Hey Hospital	93%
17	Leeds General Infirmary	100%
8	Newcastle Freeman Hospital	100%
12	Leicester Glenfield Hospital	100%
22	London Royal Brompton Hospital	100%
6	Bristol Royal Hospital For Children	100%
23	Dublin Our Lady's Children's Hospital	100%
30	Southampton Wessex Cardiothoracic Centre	100%



No	Hospital Name	Survival 30d
22	London Royal Brompton Hospital	100%
5	Liverpool Heart and Chest Hospital	89%
8	Newcastle Freeman Hospital	100%
1	Liverpool Alder Hey Hospital	100%
11	London Great Ormond Street Hospital for Children	100%
4	Birmingham Children's Hospital	100%
23	Dublin Our Lady's Children's Hospital	100%
6	Bristol Royal Hospital For Children	67%
17	Leeds General Infirmary	100%
24	Birmingham Queen Elizabeth Hospital	100%
12	Leicester Glenfield Hospital	100%
29	London Barts Heart Centre	100%
30	Southampton Wessex Cardiothoracic Centre	100%

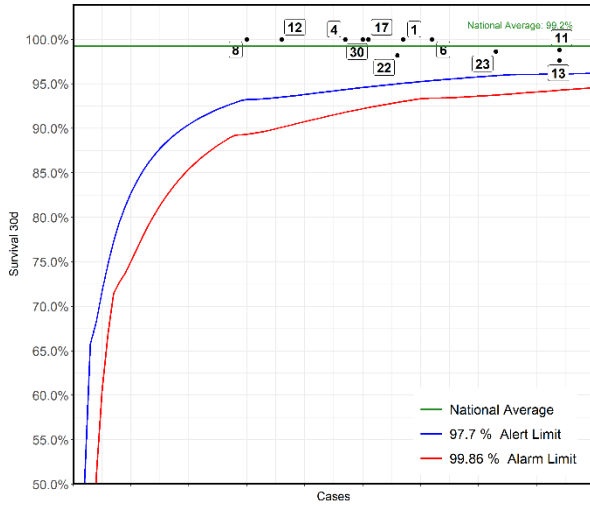


No	Hospital Name	Survival 30d
1	Liverpool Alder Hey Hospital	100%
6	Bristol Royal Hospital For Children	89%
4	Birmingham Children's Hospital	100%
11	London Great Ormond Street Hospital for Children	100%
13	London Evelina London Children's Hospital	100%
17	Leeds General Infirmary	100%
23	Dublin Our Lady's Children's Hospital	88%
12	Leicester Glenfield Hospital	100%
8	Newcastle Freeman Hospital	100%
22	London Royal Brompton Hospital	100%
30	Southampton Wessex Cardiothoracic Centre	100%



No	Hospital Name	Survival 30d
11	London Great Ormond Street Hospital for Children	50%
30	Southampton Wessex Cardiothoracic Centre	50%
4	Birmingham Children's Hospital	100%
8	Newcastle Freeman Hospital	100%
12	Leicester Glenfield Hospital	100%
13	London Evelina London Children's Hospital	100%
17	Leeds General Infirmary	100%
23	Dublin Our Lady's Children's Hospital	100%

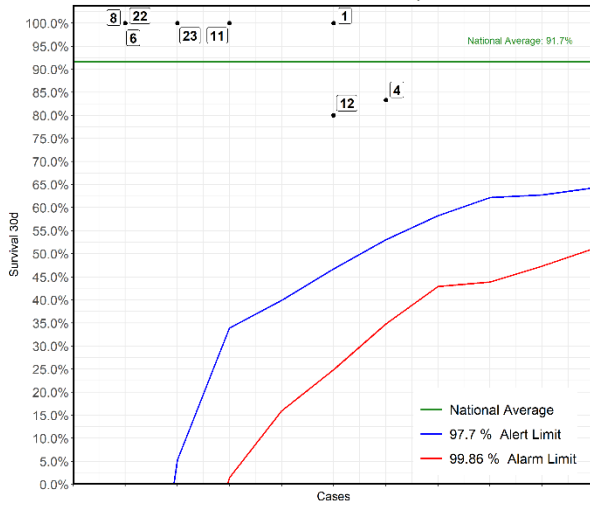
**Surgical: Isolated coarctation/hypoplasia of aorta repair**  
2018-21 - Paediatric cases only



No	Hospital Name	Survival 30d
11	London Great Ormond Street Hospital for Children	99%
*13	London Evelina London Children's Hospital	98%
*23	Dublin Our Lady's Children's Hospital	99%
6	Bristol Royal Hospital For Children	100%
1	Liverpool Alder Hey Hospital	100%
22	London Royal Brompton Hospital	98%
17	Leeds General Infirmary	100%
30	Southampton Wessex Cardiothoracic Centre	100%
4	Birmingham Children's Hospital	100%
12	Leicester Glenfield Hospital	100%
*8	Newcastle Freeman Hospital	100%

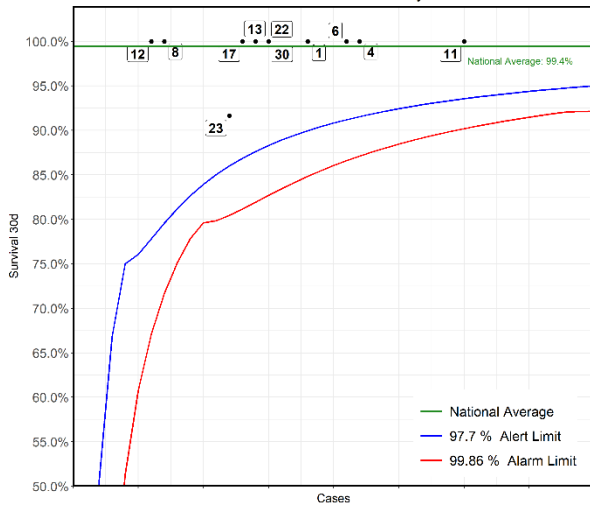
\*This Funnel plot includes 1 patient(s) at least from this centre who had 2 procedures within the same 30 day time period.  
The procedure for this patient has only been counted once in this display with respect to life status for statistical reasons to ensure the patient is not counted as alive or deceased twice over.

**Surgical: Double Switch or Rastelli-Senning repair of ccTGA**  
2018-21 - Paediatric cases only



No	Hospital Name	Survival 30d
4	Birmingham Children's Hospital	83%
1	Liverpool Alder Hey Hospital	100%
12	Leicester Glenfield Hospital	80%
11	London Great Ormond Street Hospital for Children	100%
23	Dublin Our Lady's Children's Hospital	100%
6	Bristol Royal Hospital For Children	100%
8	Newcastle Freeman Hospital	100%
22	London Royal Brompton Hospital	100%

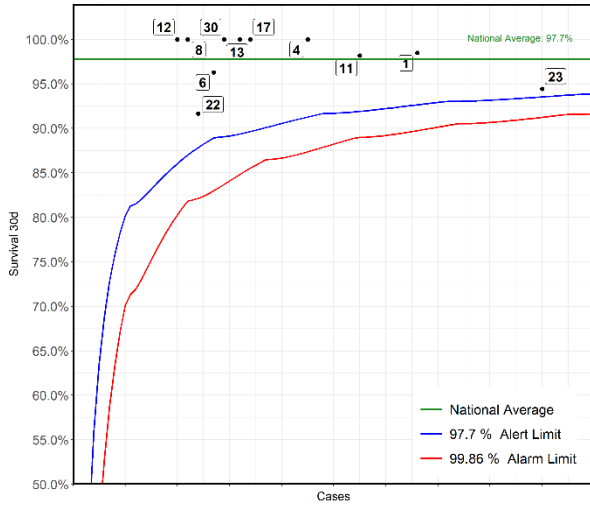
**Surgical: Partial atrioventricular septal defect (AVSD) repair**  
2018-21 - Paediatric cases only



No	Hospital Name	Survival 30d
11	London Great Ormond Street Hospital for Children	100%
4	Birmingham Children's Hospital	100%
6	Bristol Royal Hospital For Children	100%
1	Liverpool Alder Hey Hospital	100%
22	London Royal Brompton Hospital	100%
30	Southampton Wessex Cardiothoracic Centre	100%
13	London Evelina London Children's Hospital	100%
17	Leeds General Infirmary	100%
23	Dublin Our Lady's Children's Hospital	92%
*8	Newcastle Freeman Hospital	100%
12	Leicester Glenfield Hospital	100%

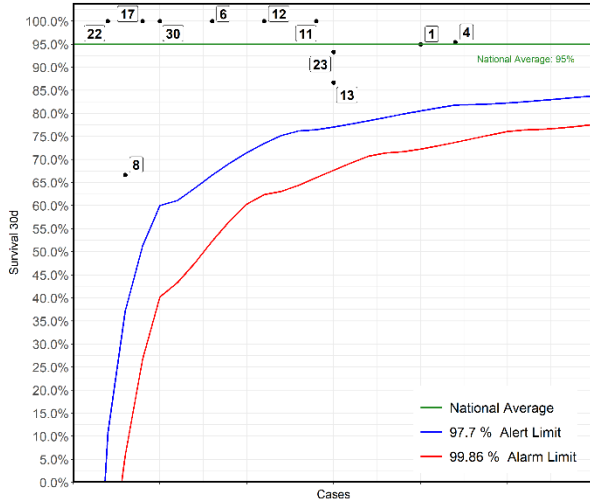
\*This Funnel plot includes 1 patient(s) at least from this centre who had 2 procedures within the same 30 day time period.  
The procedure for this patient has only been counted once in this display with respect to life status for statistical reasons to ensure the patient is not counted as alive or deceased twice over.

**Surgical: Complete atrioventricular septal defect (AVSD) repair**  
2018-21 - Paediatric cases only



No	Hospital Name	Survival 30d
23	Dublin Our Lady's Children's Hospital	94%
1	Liverpool Alder Hey Hospital	98%
11	London Great Ormond Street Hospital for Children	98%
4	Birmingham Children's Hospital	100%
17	Leeds General Infirmary	100%
13	London Evelina London Children's Hospital	100%
30	Southampton Wessex Cardiothoracic Centre	100%
6	Bristol Royal Hospital For Children	96%
22	London Royal Brompton Hospital	92%
8	Newcastle Freeman Hospital	100%
12	Leicester Glenfield Hospital	100%

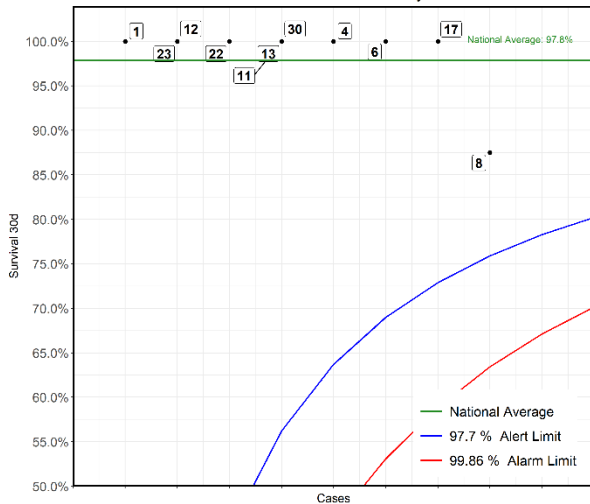
**Surgical: Systemic-to-pulmonary arterial shunt procedure (includes Blalock-Taussig & central shunts)**  
2018-21 - Paediatric cases only



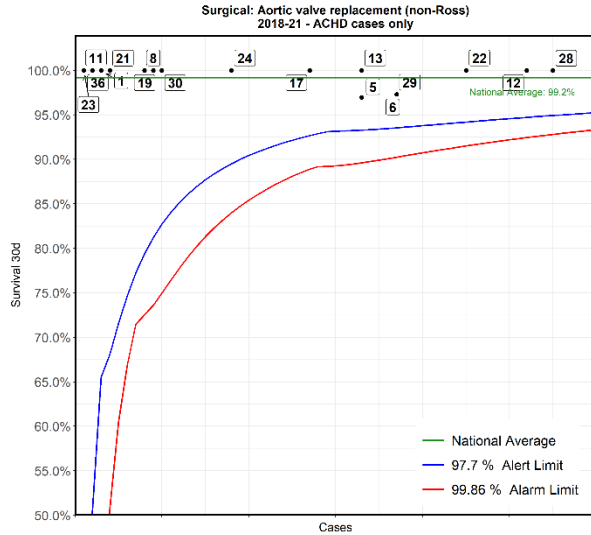
No	Hospital Name	Survival 30d
4	Birmingham Children's Hospital	95%
1	Liverpool Alder Hey Hospital	95%
**13	London Evelina London Children's Hospital	87%
*23	Dublin Our Lady's Children's Hospital	93%
11	London Great Ormond Street Hospital for Children	100%
*12	Leicester Glenfield Hospital	100%
6	Bristol Royal Hospital For Children	100%
30	Southampton Wessex Cardiothoracic Centre	100%
17	Leeds General Infirmary	100%
8	Newcastle Freeman Hospital	67%
22	London Royal Brompton Hospital	100%

\*This Funnel plot includes 1 patient(s) at least from this centre who had 2 procedures within the same 30 day time period. The procedure for this patient has only been counted once in this display with respect to life status for statistical reasons to ensure the patient is not counted as alive or deceased twice over.

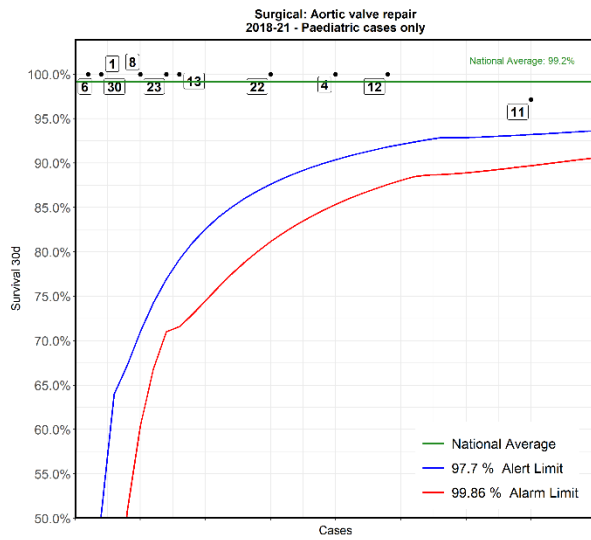
**Surgical: Aortic valve replacement (non-Ross)**  
2018-21 - Paediatric cases only



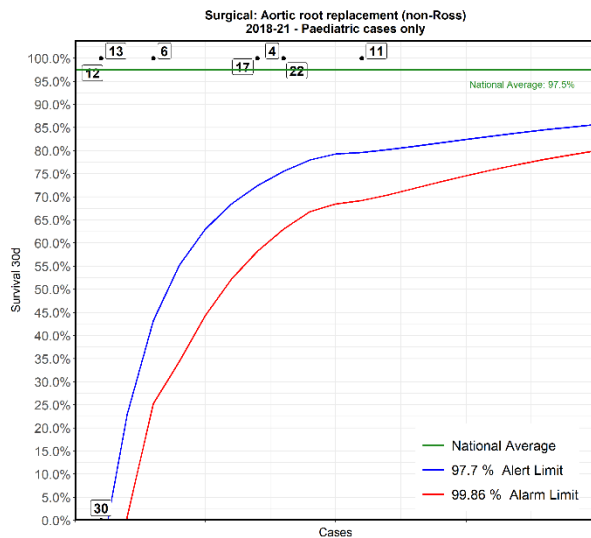
No	Hospital Name	Survival 30d
8	Newcastle Freeman Hospital	88%
17	Leeds General Infirmary	100%
6	Bristol Royal Hospital For Children	100%
4	Birmingham Children's Hospital	100%
11	London Great Ormond Street Hospital for Children	100%
13	London Evelina London Children's Hospital	100%
30	Southampton Wessex Cardiothoracic Centre	100%
22	London Royal Brompton Hospital	100%
12	Leicester Glenfield Hospital	100%
23	Dublin Our Lady's Children's Hospital	100%
1	Liverpool Alder Hey Hospital	100%



No	Hospital Name	Survival 30d
28	Belfast Royal Victoria Hospital	100%
12	Leicester Glenfield Hospital	100%
22	London Royal Brompton Hospital	100%
6	Bristol Royal Hospital For Children	97%
29	London Barts Heart Centre	97%
5	Liverpool Heart and Chest Hospital	97%
13	London Evelina London Children's Hospital	100%
17	Leeds General Infirmary	100%
24	Birmingham Queen Elizabeth Hospital	100%
30	Southampton Wessex Cardiothoracic Centre	100%
8	Newcastle Freeman Hospital	100%
19	Manchester Royal Infirmary	100%
21	Sheffield Northern General Hospital	100%
1	Liverpool Alder Hey Hospital	100%
11	London Great Ormond Street Hospital for Children	100%
23	Dublin Our Lady's Children's Hospital	100%
36	Cardiff University Hospital of Wales	100%

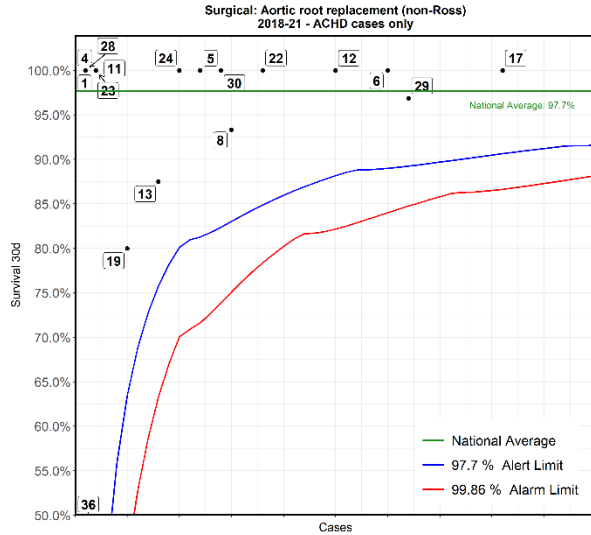


No	Hospital Name	Survival 30d
11	London Great Ormond Street Hospital for Children	97%
12	Leicester Glenfield Hospital	100%
4	Birmingham Children's Hospital	100%
22	London Royal Brompton Hospital	100%
13	London Evelina London Children's Hospital	100%
23	Dublin Our Lady's Children's Hospital	100%
8	Newcastle Freeman Hospital	100%
1	Liverpool Alder Hey Hospital	100%
30	Southampton Wessex Cardiothoracic Centre	100%
6	Bristol Royal Hospital For Children	100%

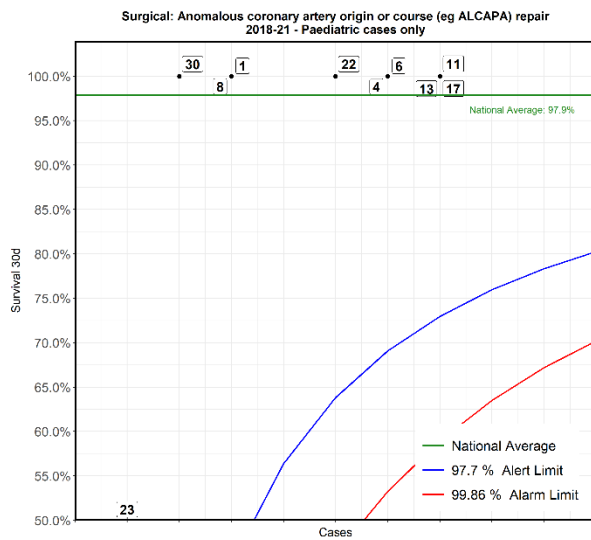


No	Hospital Name	Survival 30d
*11	London Great Ormond Street Hospital for Children	100%
4	Birmingham Children's Hospital	100%
22	London Royal Brompton Hospital	100%
17	Leeds General Infirmary	100%
6	Bristol Royal Hospital For Children	100%
12	Leicester Glenfield Hospital	100%
13	London Evelina London Children's Hospital	100%
30	Southampton Wessex Cardiothoracic Centre	0%

\*This Funnel plot includes 1 patient(s) at least from this centre who had 2 procedures within the same 30 day time period.  
The procedure for this patient has only been counted once in this display with respect to life status for statistical reasons to ensure the patient is not counted as alive or deceased twice over.

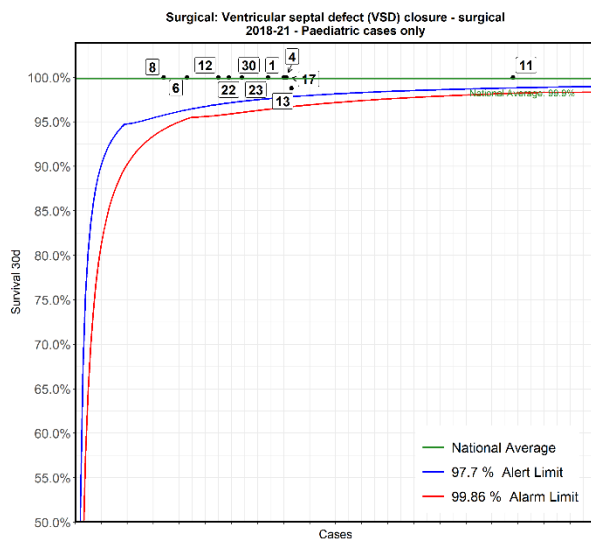


No	Hospital Name	Survival 30d
17	Leeds General Infirmary	100%
29	London Barts Heart Centre	97%
6	Bristol Royal Hospital For Children	100%
12	Leicester Glenfield Hospital	100%
22	London Royal Brompton Hospital	100%
8	Newcastle Freeman Hospital	93%
30	Southampton Wessex Cardiothoracic Centre	100%
5	Liverpool Heart and Chest Hospital	100%
24	Birmingham Queen Elizabeth Hospital	100%
13	London Evelina London Children's Hospital	88%
19	Manchester Royal Infirmary	80%
11	London Great Ormond Street Hospital for Children	100%
23	Dublin Our Lady's Children's Hospital	100%
1	Liverpool Alder Hey Hospital	100%
4	Birmingham Children's Hospital	100%
28	Belfast Royal Victoria Hospital	100%
36	Cardiff University Hospital of Wales	0%



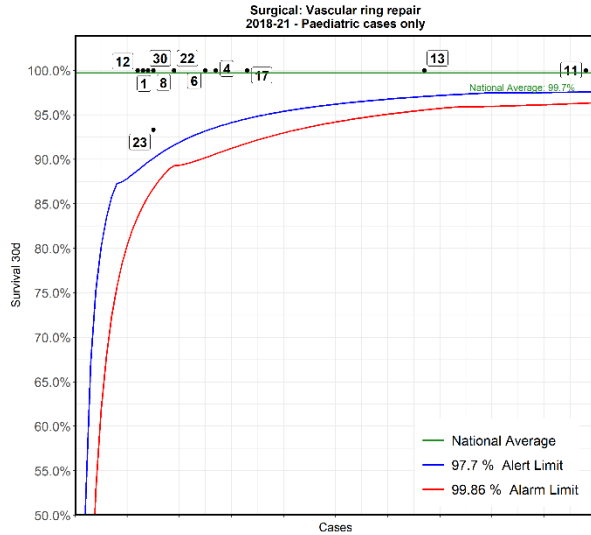
No	Hospital Name	Survival 30d
*11	London Great Ormond Street Hospital for Children	100%
13	London Evelina London Children's Hospital	100%
17	Leeds General Infirmary	100%
4	Birmingham Children's Hospital	100%
6	Bristol Royal Hospital For Children	100%
22	London Royal Brompton Hospital	100%
1	Liverpool Alder Hey Hospital	100%
8	Newcastle Freeman Hospital	100%
30	Southampton Wessex Cardiothoracic Centre	100%
23	Dublin Our Lady's Children's Hospital	0%

\*This Funnel plot includes 1 patient(s) at least from this centre who had 2 procedures within the same 30 day time period.  
The procedure for this patient has only been counted once in this display with respect to life status for statistical reasons to ensure the patient is not counted as alive or deceased twice over.



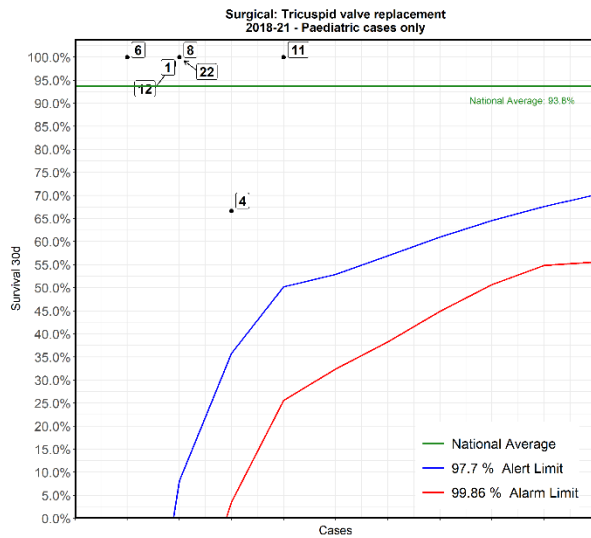
No	Hospital Name	Survival 30d
11	London Great Ormond Street Hospital for Children	100%
13	London Evelina London Children's Hospital	99%
4	Birmingham Children's Hospital	100%
17	Leeds General Infirmary	100%
*1	Liverpool Alder Hey Hospital	100%
23	Dublin Our Lady's Children's Hospital	100%
*30	Southampton Wessex Cardiothoracic Centre	100%
22	London Royal Brompton Hospital	100%
12	Leicester Glenfield Hospital	100%
6	Bristol Royal Hospital For Children	100%
8	Newcastle Freeman Hospital	100%

\*This Funnel plot includes 1 patient(s) at least from this centre who had 2 procedures within the same 30 day time period.  
The procedure for this patient has only been counted once in this display with respect to life status for statistical reasons to ensure the patient is not counted as alive or deceased twice over.

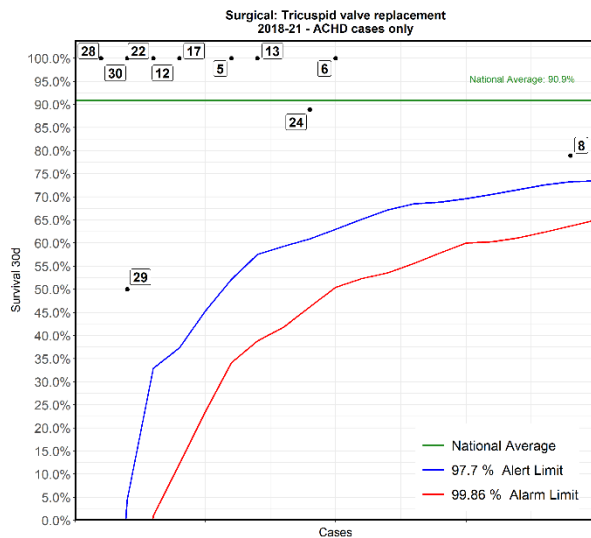


No	Hospital Name	Survival 30d
**11	London Great Ormond Street Hospital for Children	100%
13	London Evelina London Children's Hospital	100%
17	Leeds General Infirmary	100%
4	Birmingham Children's Hospital	100%
6	Bristol Royal Hospital For Children	100%
22	London Royal Brompton Hospital	100%
8	Newcastle Freeman Hospital	100%
23	Dublin Our Lady's Children's Hospital	93%
30	Southampton Wessex Cardiothoracic Centre	100%
1	Liverpool Alder Hey Hospital	100%
12	Leicester Glenfield Hospital	100%

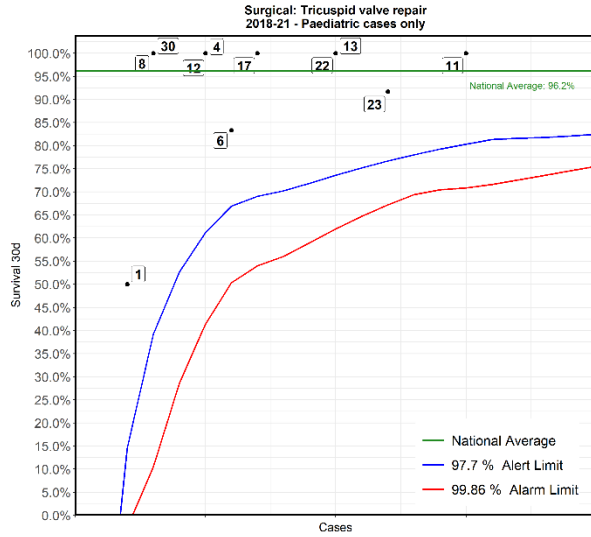
\*This Funnel plot includes 1 patient(s) at least from this centre who had 2 procedures within the same 30 day time period.  
The procedure for this patient has only been counted once in this display with respect to life status for statistical reasons to ensure the patient is not counted as alive or deceased twice over.



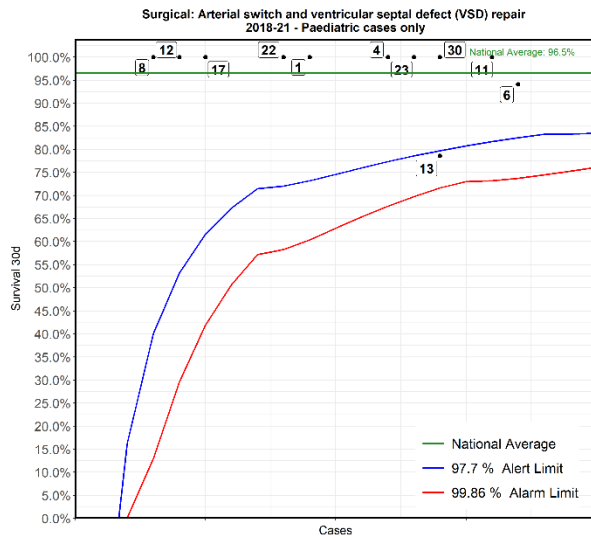
No	Hospital Name	Survival 30d
11	London Great Ormond Street Hospital for Children	100%
4	Birmingham Children's Hospital	67%
1	Liverpool Alder Hey Hospital	100%
8	Newcastle Freeman Hospital	100%
12	Leicester Glenfield Hospital	100%
22	London Royal Brompton Hospital	100%
6	Bristol Royal Hospital For Children	100%



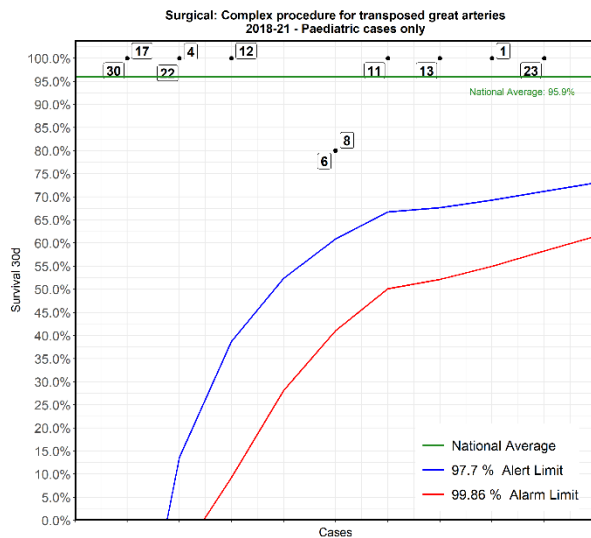
No	Hospital Name	Survival 30d
8	Newcastle Freeman Hospital	79%
6	Bristol Royal Hospital For Children	100%
24	Birmingham Queen Elizabeth Hospital	89%
13	London Evelina London Children's Hospital	100%
5	Liverpool Heart and Chest Hospital	100%
17	Leeds General Infirmary	100%
12	Leicester Glenfield Hospital	100%
22	London Royal Brompton Hospital	100%
29	London Barts Heart Centre	50%
30	Southampton Wessex Cardiothoracic Centre	100%
28	Belfast Royal Victoria Hospital	100%



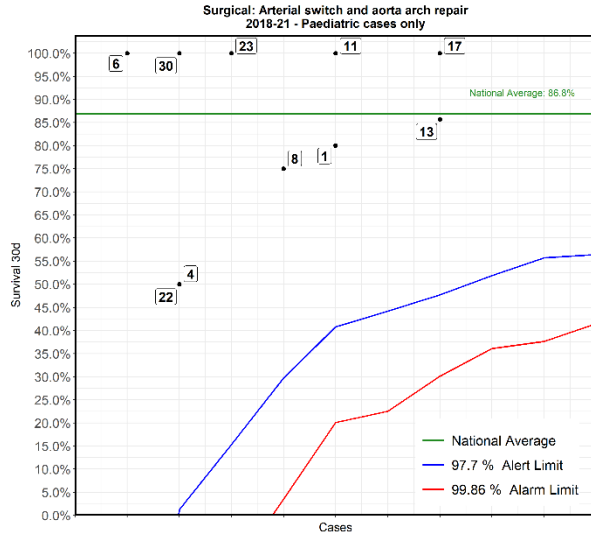
No	Hospital Name	Survival 30d
11	London Great Ormond Street Hospital for Children	100%
23	Dublin Our Lady's Children's Hospital	92%
13	London Evelina London Children's Hospital	100%
22	London Royal Brompton Hospital	100%
17	Leeds General Infirmary	100%
6	Bristol Royal Hospital For Children	83%
4	Birmingham Children's Hospital	100%
12	Leicester Glenfield Hospital	100%
8	Newcastle Freeman Hospital	100%
30	Southampton Wessex Cardiothoracic Centre	100%
1	Liverpool Alder Hey Hospital	50%



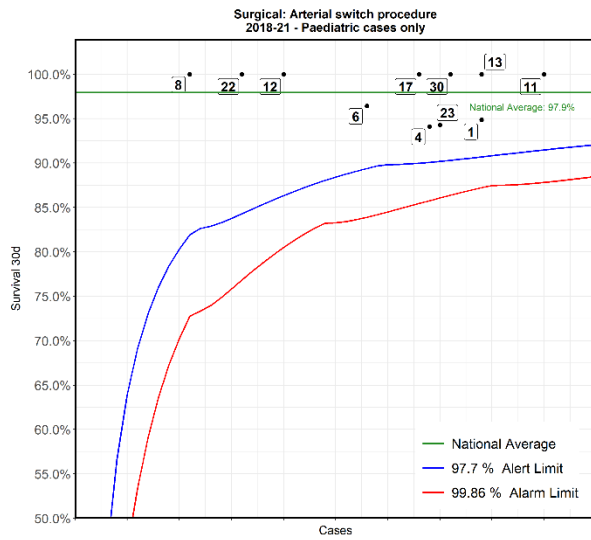
No	Hospital Name	Survival 30d
6	Bristol Royal Hospital For Children	94%
11	London Great Ormond Street Hospital for Children	100%
13	London Evelina London Children's Hospital	79%
30	Southampton Wessex Cardiothoracic Centre	100%
23	Dublin Our Lady's Children's Hospital	100%
4	Birmingham Children's Hospital	100%
1	Liverpool Alder Hey Hospital	100%
22	London Royal Brompton Hospital	100%
17	Leeds General Infirmary	100%
12	Leicester Glenfield Hospital	100%
8	Newcastle Freeman Hospital	100%



No	Hospital Name	Survival 30d
23	Dublin Our Lady's Children's Hospital	100%
1	Liverpool Alder Hey Hospital	100%
13	London Evelina London Children's Hospital	100%
11	London Great Ormond Street Hospital for Children	100%
6	Bristol Royal Hospital For Children	80%
8	Newcastle Freeman Hospital	80%
12	Leicester Glenfield Hospital	100%
4	Birmingham Children's Hospital	100%
22	London Royal Brompton Hospital	100%
17	Leeds General Infirmary	100%
30	Southampton Wessex Cardiothoracic Centre	100%



No	Hospital Name	Survival 30d
13	London Evelina London Children's Hospital	86%
17	Leeds General Infirmary	100%
1	Liverpool Alder Hey Hospital	80%
11	London Great Ormond Street Hospital for Children	100%
8	Newcastle Freeman Hospital	75%
23	Dublin Our Lady's Children's Hospital	100%
4	Birmingham Children's Hospital	50%
22	London Royal Brompton Hospital	50%
30	Southampton Wessex Cardiothoracic Centre	100%
6	Bristol Royal Hospital For Children	100%



No	Hospital Name	Survival 30d
11	London Great Ormond Street Hospital for Children	100%
1	Liverpool Alder Hey Hospital	95%
13	London Evelina London Children's Hospital	100%
30	Southampton Wessex Cardiothoracic Centre	100%
23	Dublin Our Lady's Children's Hospital	94%
4	Birmingham Children's Hospital	94%
17	Leeds General Infirmary	100%
6	Bristol Royal Hospital For Children	96%
12	Leicester Glenfield Hospital	100%
22	London Royal Brompton Hospital	100%
8	Newcastle Freeman Hospital	100%