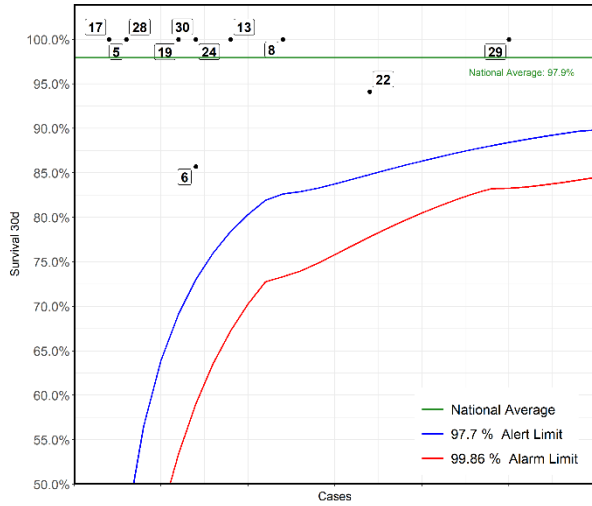
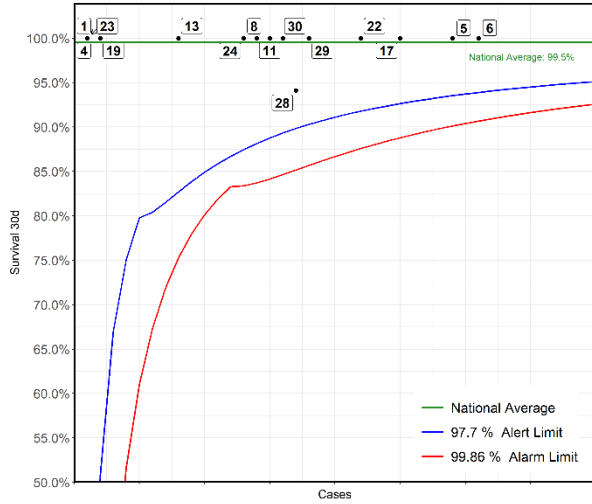


**rrophysiology: Biventricular implantable cardioverter & defibrillator (ICD) implantation or pacemaker system placement
2018-21 - ACHD cases only**



No	Hospital Name	Survival 30d
29	London Barts Heart Centre	100%
22	London Royal Brompton Hospital	94%
8	Newcastle Freeman Hospital	100%
13	London Evelina London Children's Hospital	100%
6	Bristol Royal Hospital For Children	96%
24	Birmingham Queen Elizabeth Hospital	100%
19	Manchester Royal Infirmary	100%
30	Southampton Wessex Cardiothoracic Centre	100%
28	Belfast Royal Victoria Hospital	100%
5	Liverpool Heart and Chest Hospital	100%
17	Leeds General Infirmary	100%

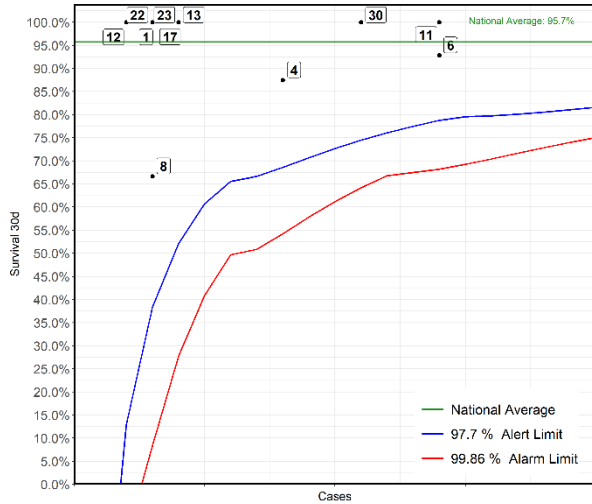
**Electrophysiology: Implantable cardioverter & defibrillator (ICD) implantation
2018-21 - ACHD cases only**



No	Hospital Name	Survival 30d
6	Bristol Royal Hospital For Children	100%
5	Liverpool Heart and Chest Hospital	100%
17	Leeds General Infirmary	100%
22	London Royal Brompton Hospital	100%
29	London Barts Heart Centre	100%
28	Belfast Royal Victoria Hospital	94%
30	Southampton Wessex Cardiothoracic Centre	100%
11	London Great Ormond Street Hospital for Children	100%
8	Newcastle Freeman Hospital	100%
24	Birmingham Queen Elizabeth Hospital	100%
13	London Evelina London Children's Hospital	100%
19	Manchester Royal Infirmary	100%
1	Liverpool Alder Hey Hospital	100%
4	Birmingham Children's Hospital	100%
23	Dublin Our Lady's Children's Hospital	100%

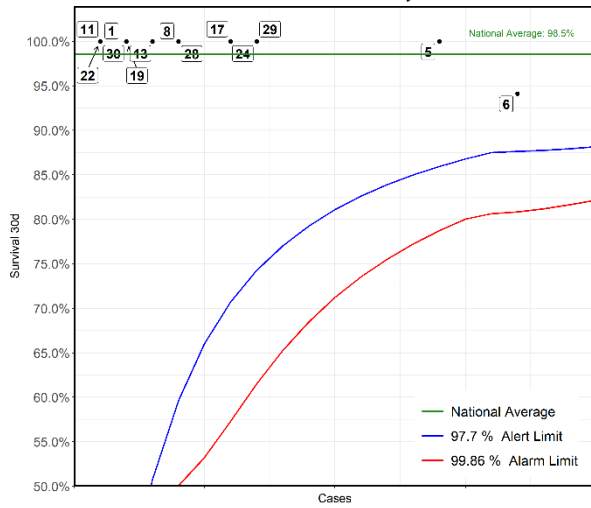
*This Funnel plot includes 1 patient(s) at least from this centre who had 2 procedures within the same 30 day time period. The procedure for this patient has only been counted once in this display with respect to life status for statistical reasons to ensure the patient is not counted as alive or deceased twice over.

**Electrophysiology: Miscellaneous electrophysiology (EP) procedures
2018-21 - Paediatric cases only**



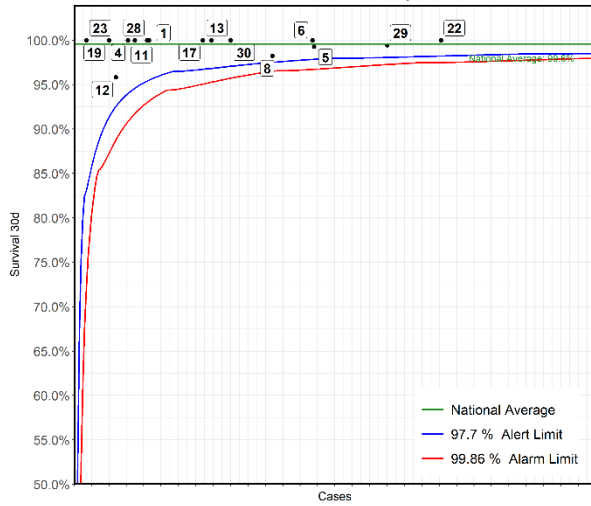
No	Hospital Name	Survival 30d
6	Bristol Royal Hospital For Children	93%
11	London Great Ormond Street Hospital for Children	100%
30	Southampton Wessex Cardiothoracic Centre	100%
4	Birmingham Children's Hospital	88%
13	London Evelina London Children's Hospital	100%
17	Leeds General Infirmary	100%
23	Dublin Our Lady's Children's Hospital	100%
1	Liverpool Alder Hey Hospital	100%
8	Newcastle Freeman Hospital	67%
22	London Royal Brompton Hospital	100%
12	Leicester Glenfield Hospital	100%

**Electrophysiology: Miscellaneous electrophysiology (EP) procedures
2018-21 - ACHD cases only**



No	Hospital Name	Survival 30d
6	Bristol Royal Hospital For Children	94%
5	Liverpool Heart and Chest Hospital	100%
29	London Barts Heart Centre	100%
17	Leeds General Infirmary	100%
24	Birmingham Queen Elizabeth Hospital	100%
8	Newcastle Freeman Hospital	100%
28	Belfast Royal Victoria Hospital	100%
13	London Evelina London Children's Hospital	100%
19	Manchester Royal Infirmary	100%
30	Southampton Wessex Cardiothoracic Centre	100%
1	Liverpool Alder Hey Hospital	100%
11	London Great Ormond Street Hospital for Children	100%
22	London Royal Brompton Hospital	100%

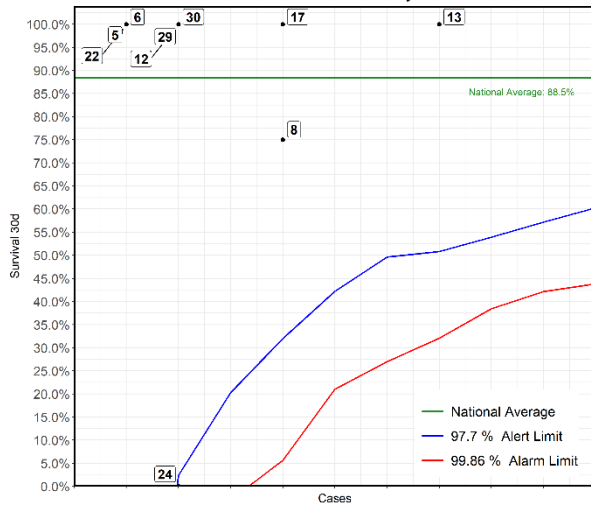
**Electrophysiology: Transluminal ablation procedure for arrhythmia
2018-21 - ACHD cases only**



No	Hospital Name	Survival 30d
**22	London Royal Brompton Hospital	100%
29	London Barts Heart Centre	99%
**5	Liverpool Heart and Chest Hospital	99%
*6	Bristol Royal Hospital For Children	100%
**8	Newcastle Freeman Hospital	98%
30	Southampton Wessex Cardiothoracic Centre	100%
13	London Evelina London Children's Hospital	100%
17	Leeds General Infirmary	100%
1	Liverpool Alder Hey Hospital	100%
11	London Great Ormond Street Hospital for Children	100%
*28	Belfast Royal Victoria Hospital	100%
4	Birmingham Children's Hospital	100%
12	Leicester Glenfield Hospital	96%
**23	Dublin Our Lady's Children's Hospital	100%
*19	Manchester Royal Infirmary	100%

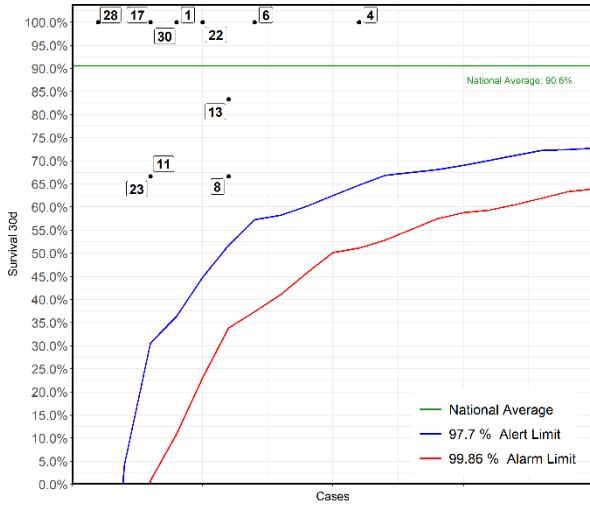
*This Funnel plot includes 1 patient(s) at least from this centre who had 2 procedures within the same 30 day time period. The procedure for this patient has only been counted once in this display with respect to life status for statistical reasons to ensure the patient is not counted as alive or deceased twice over.

**Electrophysiology: Isolated surgical procedures for arrhythmia (including ablation and Maze procedures)
2018-21 - ACHD cases only**



No	Hospital Name	Survival 30d
13	London Evelina London Children's Hospital	100%
8	Newcastle Freeman Hospital	75%
17	Leeds General Infirmary	100%
12	Leicester Glenfield Hospital	100%
24	Birmingham Queen Elizabeth Hospital	0%
29	London Barts Heart Centre	100%
30	Southampton Wessex Cardiothoracic Centre	100%
5	Liverpool Heart and Chest Hospital	100%
6	Bristol Royal Hospital For Children	100%
22	London Royal Brompton Hospital	100%

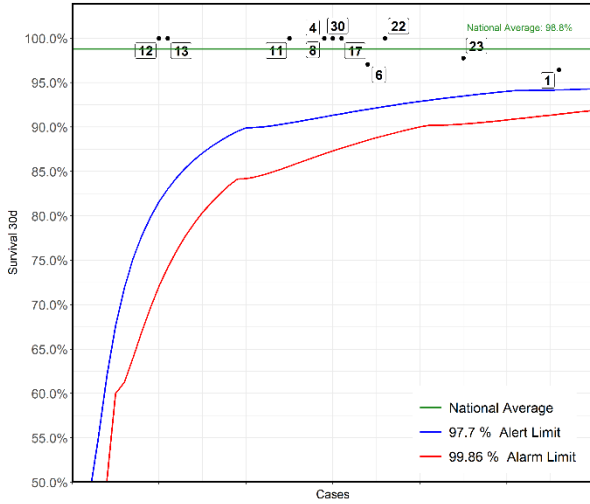
**Electrophysiology: Pacemaker lead procedure
2018-21 - Paediatric cases only**



No	Hospital Name	Survival 30d
4	Birmingham Children's Hospital	100%
6	Bristol Royal Hospital For Children	100%
8	Newcastle Freeman Hospital	67%
13	London Evelina London Children's Hospital	83%
22	London Royal Brompton Hospital	100%
1	Liverpool Alder Hey Hospital	100%
30	Southampton Wessex Cardiothoracic Centre	100%
11	London Great Ormond Street Hospital for Children	67%
17	Leeds General Infirmary	100%
23	Dublin Our Lady's Children's Hospital	67%
28	Belfast Royal Victoria Hospital	100%

*This Funnel plot includes 1 patient(s) at least from this centre who had 2 procedures within the same 30 day time period.
The procedure for this patient has only been counted once in this display with respect to life status for statistical reasons to ensure the patient is not counted as alive or deceased twice over.

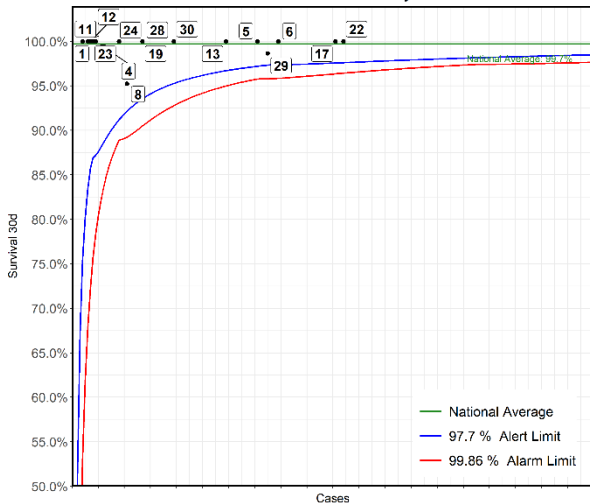
**Electrophysiology: Permanent epicardial pacemaker system placement
2018-21 - Paediatric cases only**



No	Hospital Name	Survival 30d
**1	Liverpool Alder Hey Hospital	96%
23	Dublin Our Lady's Children's Hospital	98%
22	London Royal Brompton Hospital	100%
6	Bristol Royal Hospital For Children	97%
17	Leeds General Infirmary	100%
30	Southampton Wessex Cardiothoracic Centre	100%
4	Birmingham Children's Hospital	100%
8	Newcastle Freeman Hospital	100%
11	London Great Ormond Street Hospital for Children	100%
13	London Evelina London Children's Hospital	100%
12	Leicester Glenfield Hospital	100%

*This Funnel plot includes 1 patient(s) at least from this centre who had 2 procedures within the same 30 day time period.
The procedure for this patient has only been counted once in this display with respect to life status for statistical reasons to ensure the patient is not counted as alive or deceased twice over.

**Electrophysiology: Pacemaker system placement or generator replacement - surgical
2018-21 - ACHD cases only**



No	Hospital Name	Survival 30d
**22	London Royal Brompton Hospital	100%
17	Leeds General Infirmary	100%
6	Bristol Royal Hospital For Children	100%
29	London Barts Heart Centre	99%
5	Liverpool Heart and Chest Hospital	100%
13	London Evelina London Children's Hospital	100%
30	Southampton Wessex Cardiothoracic Centre	100%
19	Manchester Royal Infirmary	100%
28	Belfast Royal Victoria Hospital	100%
8	Newcastle Freeman Hospital	95%
24	Birmingham Queen Elizabeth Hospital	100%
4	Birmingham Children's Hospital	100%
23	Dublin Our Lady's Children's Hospital	100%
12	Leicester Glenfield Hospital	100%
1	Liverpool Alder Hey Hospital	100%
11	London Great Ormond Street Hospital for Children	100%

*This Funnel plot includes 1 patient(s) at least from this centre who had 2 procedures within the same 30 day time period.
The procedure for this patient has only been counted once in this display with respect to life status for statistical reasons to ensure the patient is not counted as alive or deceased twice over.