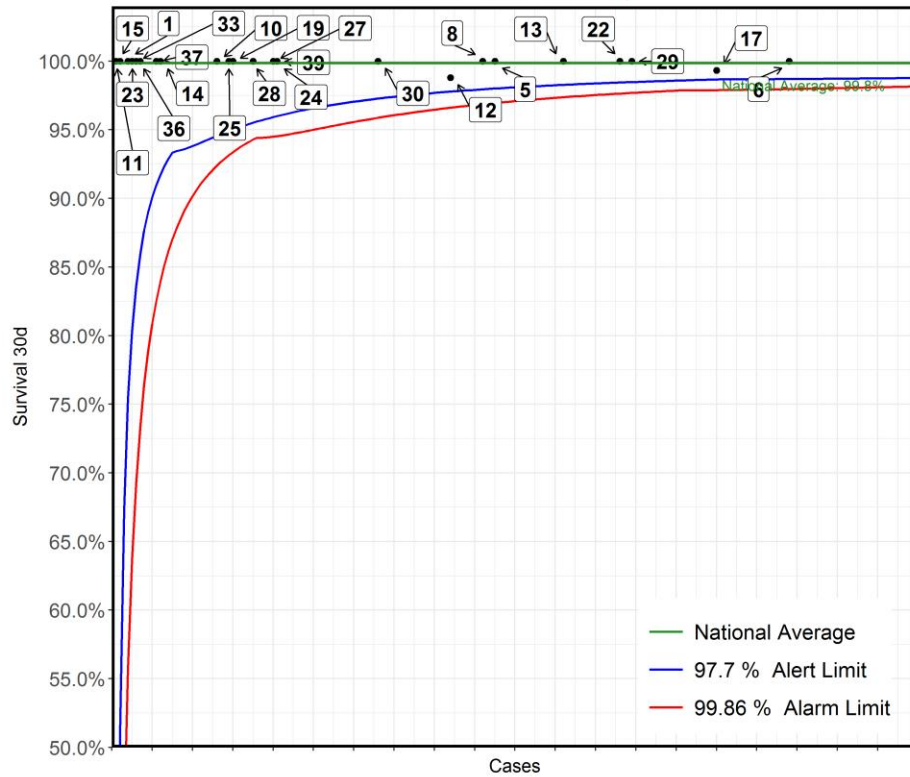


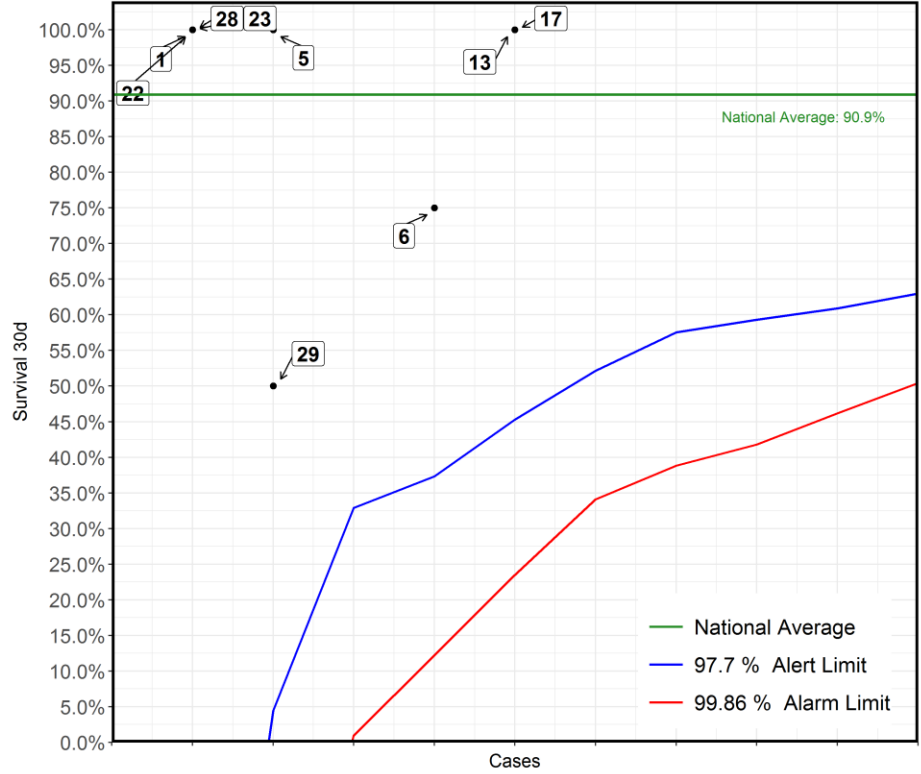
Transcatheter: Transluminal atrial septal defect (ASD) closure
2017-20 - ACHD cases only



| No | Hospital Name | Survival 30d |
|-----|--|--------------|
| 6 | Bristol Royal Hospital For Children | 100% |
| 17 | Leeds General Infirmary | 99% |
| *29 | London Barts Heart Centre | 100% |
| 22 | London Royal Brompton Hospital | 100% |
| *13 | London Evelina London Children's Hospital | 100% |
| 5 | Liverpool Heart and Chest Hospital | 100% |
| 8 | Newcastle Freeman Hospital | 100% |
| 12 | Leicester Glenfield Hospital | 99% |
| 30 | Southampton Wessex Cardiothoracic Centre | 100% |
| 39 | Papworth Hospital | 100% |
| 24 | Birmingham Queen Elizabeth Hospital | 100% |
| 27 | Brighton Royal Sussex County Hospital | 100% |
| 28 | Belfast Royal Victoria Hospital | 100% |
| 19 | Manchester Royal Infirmary | 100% |
| 25 | Oxford John Radcliffe Hospital | 100% |
| 10 | Glasgow Golden Jubilee National Hospital | 100% |
| 14 | London Hammersmith Hospital | 100% |
| 37 | Blackpool Victoria Hospital | 100% |
| 36 | Cardiff University Hospital of Wales | 100% |
| 33 | Stoke University Hospital of North Staffordshire | 100% |
| 23 | Dublin Our Lady's Children's Hospital | 100% |
| 1 | Liverpool Alder Hey Hospital | 100% |
| 15 | London Harley Street Clinic | 100% |
| 11 | London Great Ormond Street Hospital for Children | 100% |

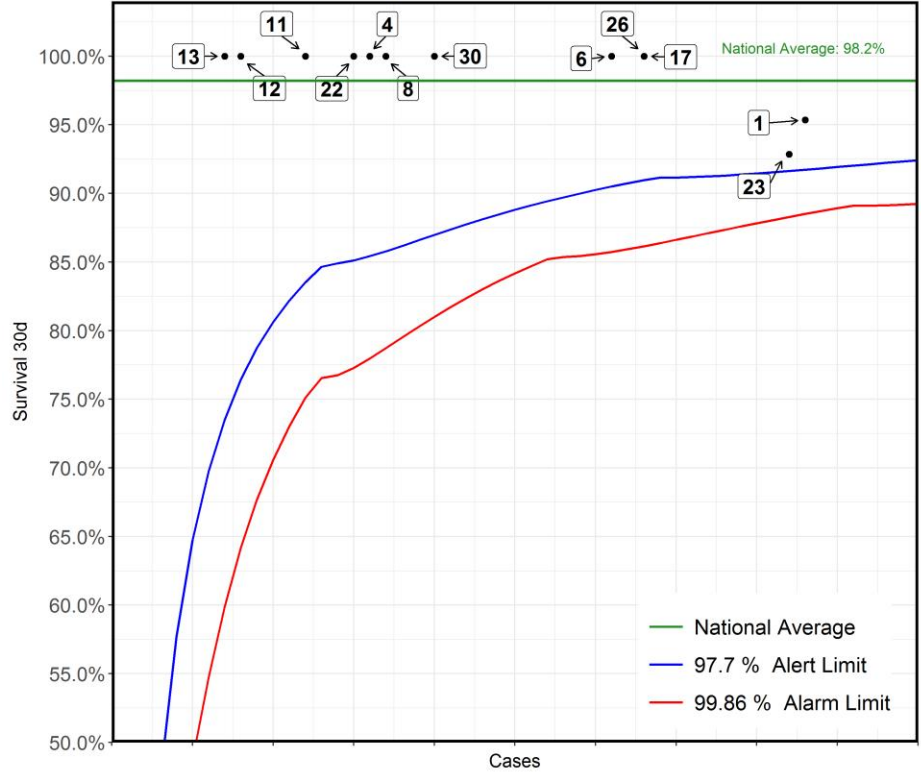
*This Funnel plot includes 1 patient(s) at least from this centre who had 2 procedures within the same 30 day time period. The procedure for this patient has only been counted once in this display with respect to life status for statistical reasons to ensure the patient is not counted as alive or deceased twice over.

Transcatheter: Balloon dilation of aortic valve
2017-20 - ACHD cases only



| No | Hospital Name | Survival 30d |
|----|---|--------------|
| 13 | London Evelina London Children's Hospital | 100% |
| 17 | Leeds General Infirmary | 100% |
| 6 | Bristol Royal Hospital For Children | 75% |
| 5 | Liverpool Heart and Chest Hospital | 100% |
| 29 | London Barts Heart Centre | 50% |
| 1 | Liverpool Alder Hey Hospital | 100% |
| 22 | London Royal Brompton Hospital | 100% |
| 23 | Dublin Our Lady's Children's Hospital | 100% |
| 28 | Belfast Royal Victoria Hospital | 100% |

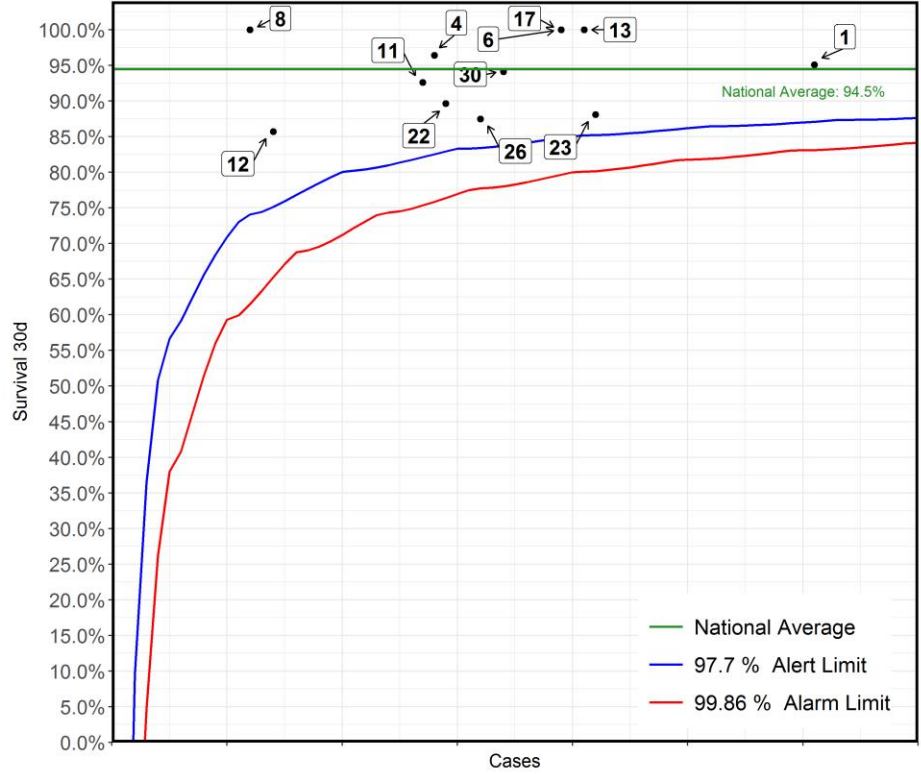
Transcatheter: Balloon dilation of aortic valve
2017-20 - Paediatric cases only



| No | Hospital Name | Survival 30d |
|-----|--|--------------|
| 1 | Liverpool Alder Hey Hospital | 95% |
| 23 | Dublin Our Lady's Children's Hospital | 93% |
| *17 | Leeds General Infirmary | 100% |
| 26 | Glasgow Royal Hospital for Children | 100% |
| *6 | Bristol Royal Hospital For Children | 100% |
| 30 | Southampton Wessex Cardiothoracic Centre | 100% |
| *8 | Newcastle Freeman Hospital | 100% |
| 4 | Birmingham Children's Hospital | 100% |
| 22 | London Royal Brompton Hospital | 100% |
| 11 | London Great Ormond Street Hospital for Children | 100% |
| 12 | Leicester Glenfield Hospital | 100% |
| 13 | London Evelina London Children's Hospital | 100% |

*This Funnel plot includes 1 patient(s) at least from this centre who had 2 procedures within the same 30 day time period. The procedure for this patient has only been counted once in this display with respect to life status for statistical reasons to ensure the patient is not counted as alive or deceased twice over.

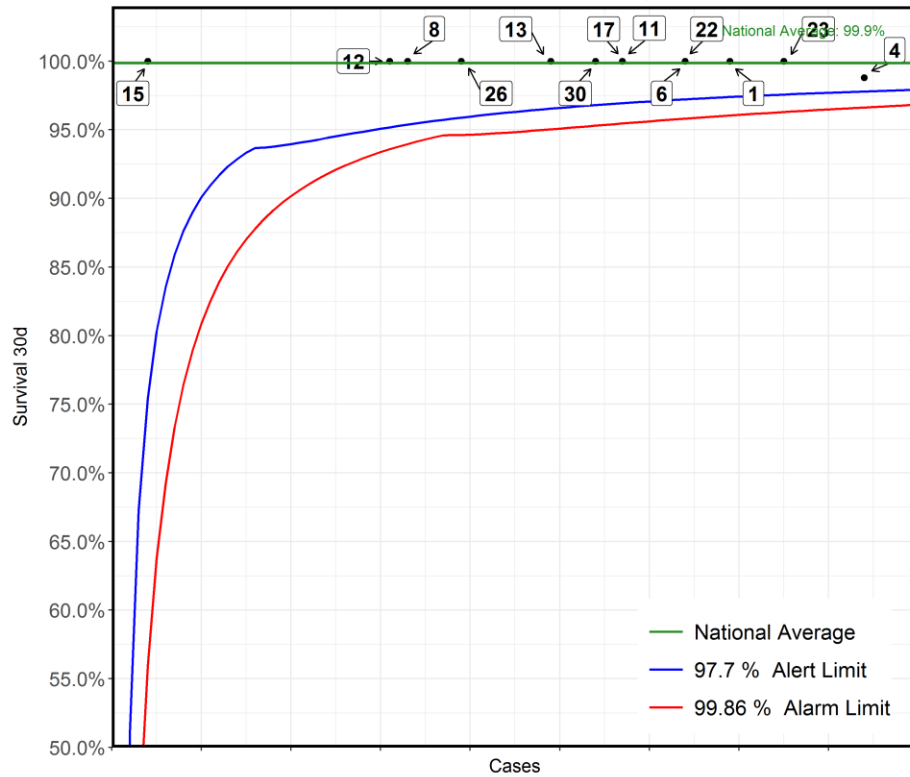
Transcatheter: Balloon atrial septostomy by pull back
2017-20 - Paediatric cases only



| No | Hospital Name | Survival 30d |
|----|--|--------------|
| 1 | Liverpool Alder Hey Hospital | 95% |
| 23 | Dublin Our Lady's Children's Hospital | 88% |
| 13 | London Evelina London Children's Hospital | 100% |
| *6 | Bristol Royal Hospital For Children | 100% |
| 17 | Leeds General Infirmary | 100% |
| 30 | Southampton Wessex Cardiothoracic Centre | 94% |
| 26 | Glasgow Royal Hospital for Children | 88% |
| 22 | London Royal Brompton Hospital | 90% |
| 4 | Birmingham Children's Hospital | 96% |
| 11 | London Great Ormond Street Hospital for Children | 93% |
| 12 | Leicester Glenfield Hospital | 86% |
| 8 | Newcastle Freeman Hospital | 100% |

*This Funnel plot includes 1 patient(s) at least from this centre who had 2 procedures within the same 30 day time period. The procedure for this patient has only been counted once in this display with respect to life status for statistical reasons to ensure the patient is not counted as alive or deceased twice over.

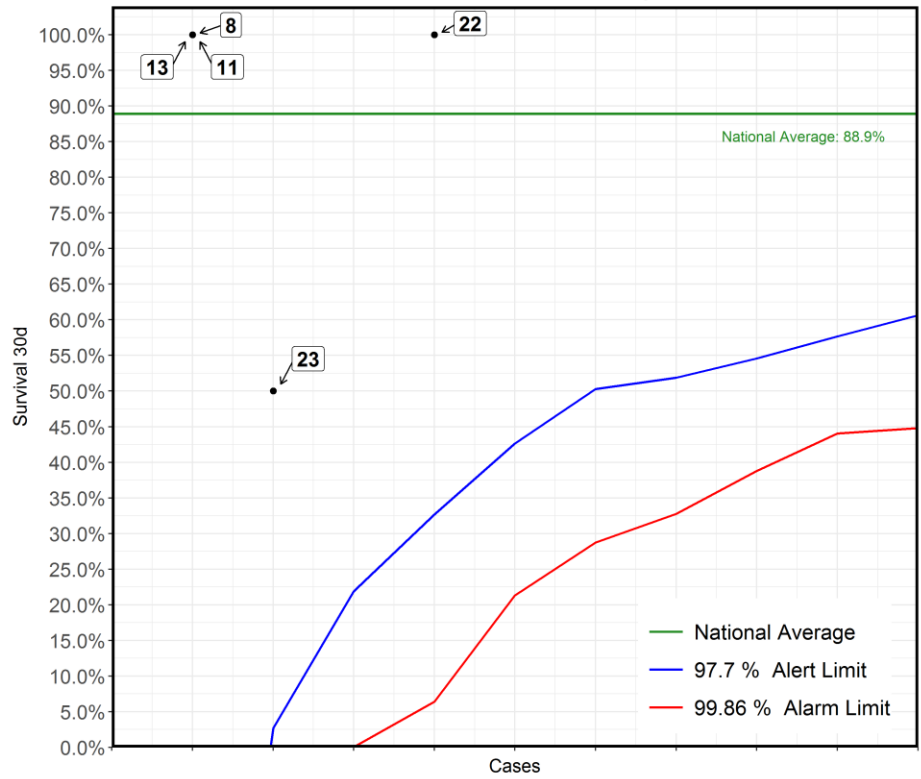
Transcatheter: Balloon dilation of pulmonary valve
2017-20 - Paediatric cases only



| No | Hospital Name | Survival 30d |
|-----|--|--------------|
| *4 | Birmingham Children's Hospital | 99% |
| *23 | Dublin Our Lady's Children's Hospital | 100% |
| 1 | Liverpool Alder Hey Hospital | 100% |
| 6 | Bristol Royal Hospital For Children | 100% |
| 22 | London Royal Brompton Hospital | 100% |
| 11 | London Great Ormond Street Hospital for Children | 100% |
| 17 | Leeds General Infirmary | 100% |
| 30 | Southampton Wessex Cardiothoracic Centre | 100% |
| *13 | London Evelina London Children's Hospital | 100% |
| 26 | Glasgow Royal Hospital for Children | 100% |
| 8 | Newcastle Freeman Hospital | 100% |
| 12 | Leicester Glenfield Hospital | 100% |
| 15 | London Harley Street Clinic | 100% |

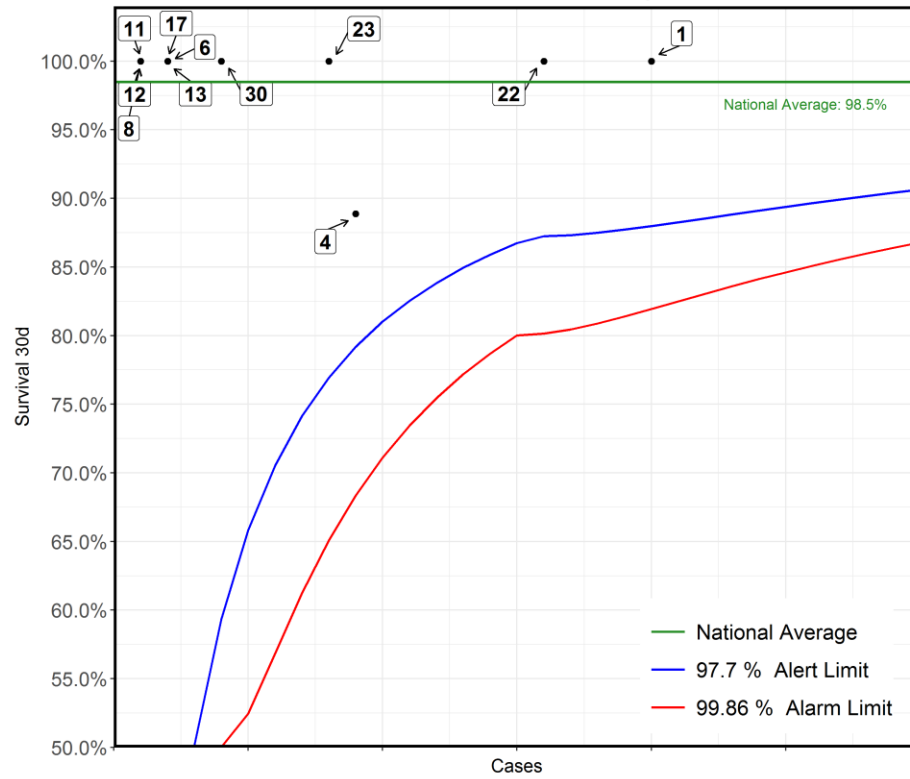
*This Funnel plot includes 1 patient(s) at least from this centre who had 2 procedures within the same 30 day time period.
The procedure for this patient has only been counted once in this display with respect to life status for statistical reasons to ensure the patient is not counted as alive or deceased twice over.

Transcatheter: Blade atrial septostomy
2017-20 - Paediatric cases only



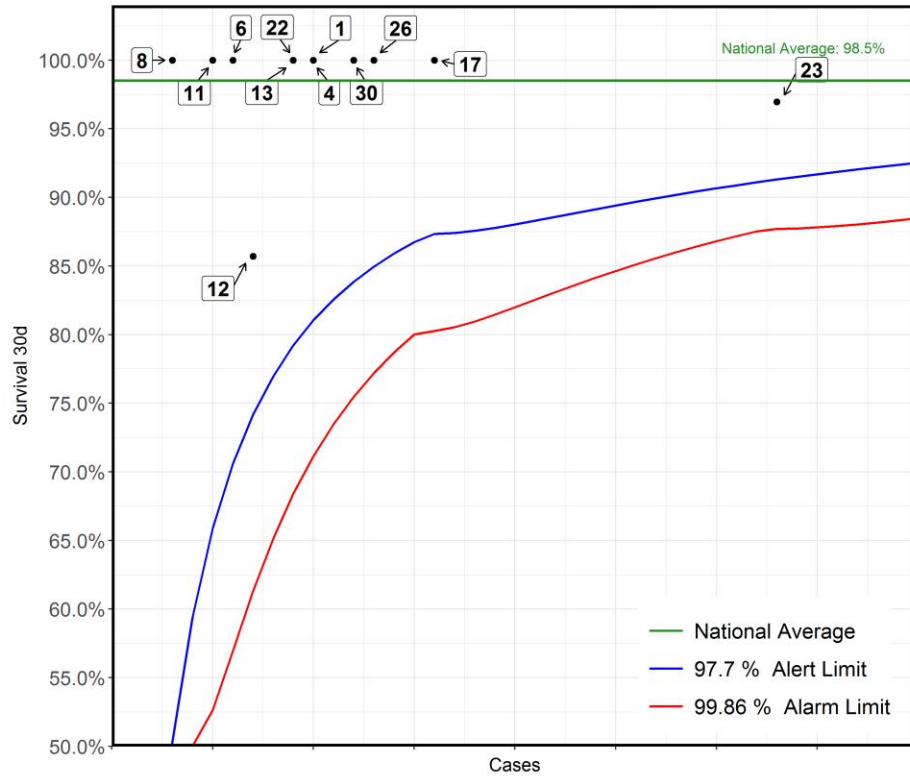
| No | Hospital Name | Survival 30d |
|----|--|--------------|
| 22 | London Royal Brompton Hospital | 100% |
| 23 | Dublin Our Lady's Children's Hospital | 50% |
| 8 | Newcastle Freeman Hospital | 100% |
| 11 | London Great Ormond Street Hospital for Children | 100% |
| 13 | London Evelina London Children's Hospital | 100% |

Transcatheter: Balloon dilation of native aortic coarctation-hypoplasia
2017-20 - Paediatric cases only



| No | Hospital Name | Survival 30d |
|----|--|--------------|
| 1 | Liverpool Alder Hey Hospital | 100% |
| 22 | London Royal Brompton Hospital | 100% |
| 4 | Birmingham Children's Hospital | 89% |
| 23 | Dublin Our Lady's Children's Hospital | 100% |
| 30 | Southampton Wessex Cardiothoracic Centre | 100% |
| 6 | Bristol Royal Hospital For Children | 100% |
| 13 | London Evelina London Children's Hospital | 100% |
| 17 | Leeds General Infirmary | 100% |
| 8 | Newcastle Freeman Hospital | 100% |
| 11 | London Great Ormond Street Hospital for Children | 100% |
| 12 | Leicester Glenfield Hospital | 100% |

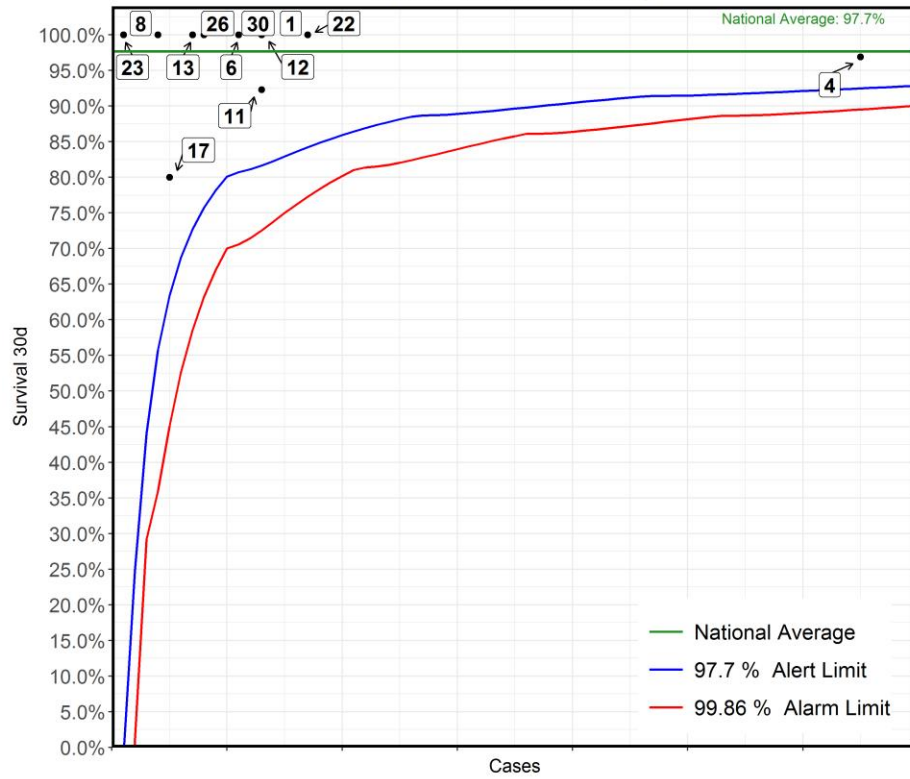
Transcatheter: Stent placement at site of aortic coarctation
2017-20 - Paediatric cases only



| No | Hospital Name | Survival 30d |
|-----|--|--------------|
| *23 | Dublin Our Lady's Children's Hospital | 97% |
| 17 | Leeds General Infirmary | 100% |
| 26 | Glasgow Royal Hospital for Children | 100% |
| 30 | Southampton Wessex Cardiothoracic Centre | 100% |
| 1 | Liverpool Alder Hey Hospital | 100% |
| 4 | Birmingham Children's Hospital | 100% |
| 13 | London Evelina London Children's Hospital | 100% |
| 22 | London Royal Brompton Hospital | 100% |
| 12 | Leicester Glenfield Hospital | 86% |
| 6 | Bristol Royal Hospital For Children | 100% |
| 11 | London Great Ormond Street Hospital for Children | 100% |
| 8 | Newcastle Freeman Hospital | 100% |

*This Funnel plot includes 1 patient(s) at least from this centre who had 2 procedures within the same 30 day time period.
The procedure for this patient has only been counted once in this display with respect to life status for statistical reasons to ensure the patient is not counted as alive or deceased twice over.

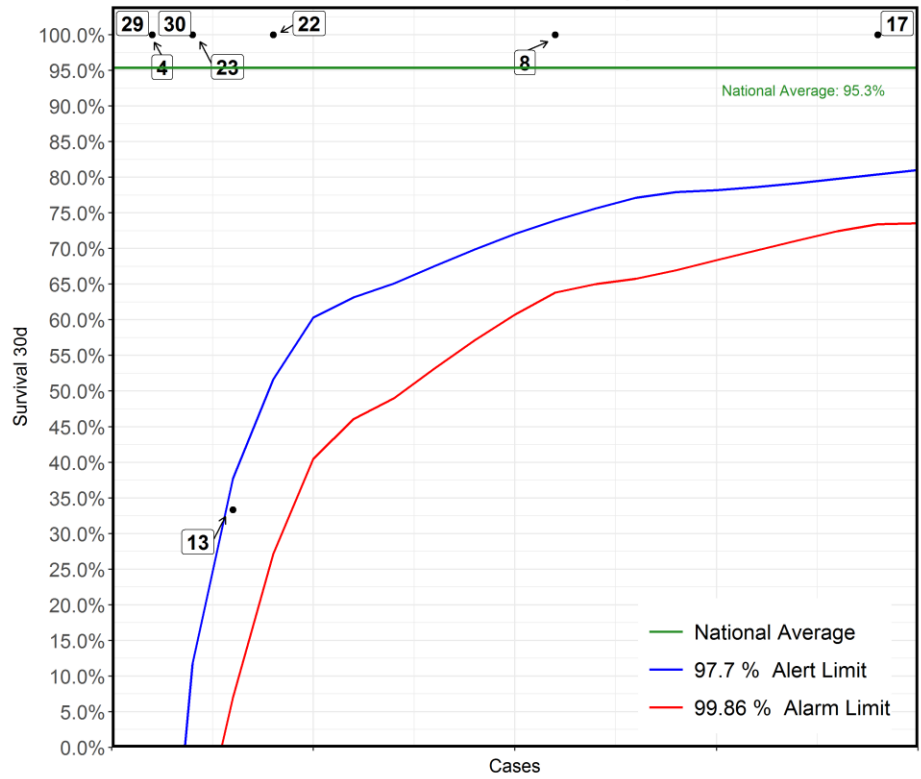
Transcatheter: Stent or balloon dilation of cardiac conduit
2017-20 - Paediatric cases only



| No | Hospital Name | Survival 30d |
|----|--|--------------|
| 4 | Birmingham Children's Hospital | 97% |
| *1 | Liverpool Alder Hey Hospital | 100% |
| 22 | London Royal Brompton Hospital | 100% |
| 11 | London Great Ormond Street Hospital for Children | 92% |
| 12 | Leicester Glenfield Hospital | 100% |
| 6 | Bristol Royal Hospital For Children | 100% |
| 30 | Southampton Wessex Cardiothoracic Centre | 100% |
| 26 | Glasgow Royal Hospital for Children | 100% |
| 13 | London Evelina London Children's Hospital | 100% |
| 17 | Leeds General Infirmary | 80% |
| 8 | Newcastle Freeman Hospital | 100% |
| 23 | Dublin Our Lady's Children's Hospital | 100% |

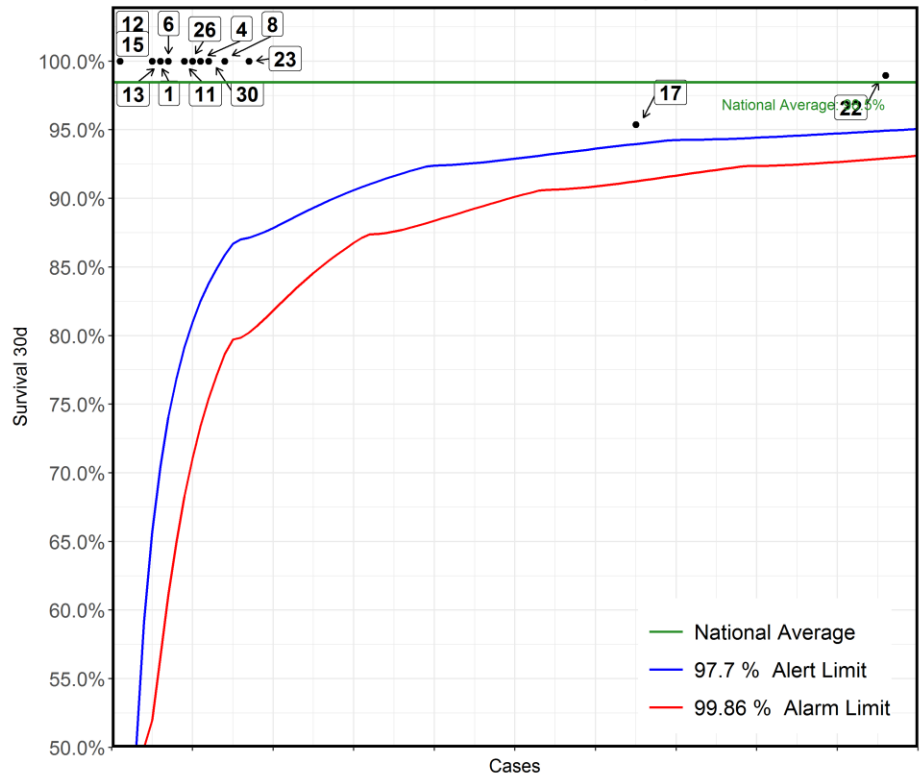
*This Funnel plot includes 1 patient(s) at least from this centre who had 2 procedures within the same 30 day time period.
The procedure for this patient has only been counted once in this display with respect to life status for statistical reasons to ensure the patient is not counted as alive or deceased twice over.

Transcatheter: Transluminal systemic-to-pulmonary collateral artery (MAPCA) procedure
2017-20 - ACHD cases only



| No | Hospital Name | Survival 30d |
|----|---|--------------|
| 17 | Leeds General Infirmary | 100% |
| 8 | Newcastle Freeman Hospital | 100% |
| 22 | London Royal Brompton Hospital | 100% |
| 13 | London Evelina London Children's Hospital | 33% |
| 23 | Dublin Our Lady's Children's Hospital | 100% |
| 30 | Southampton Wessex Cardiothoracic Centre | 100% |
| 4 | Birmingham Children's Hospital | 100% |
| 29 | London Barts Heart Centre | 100% |

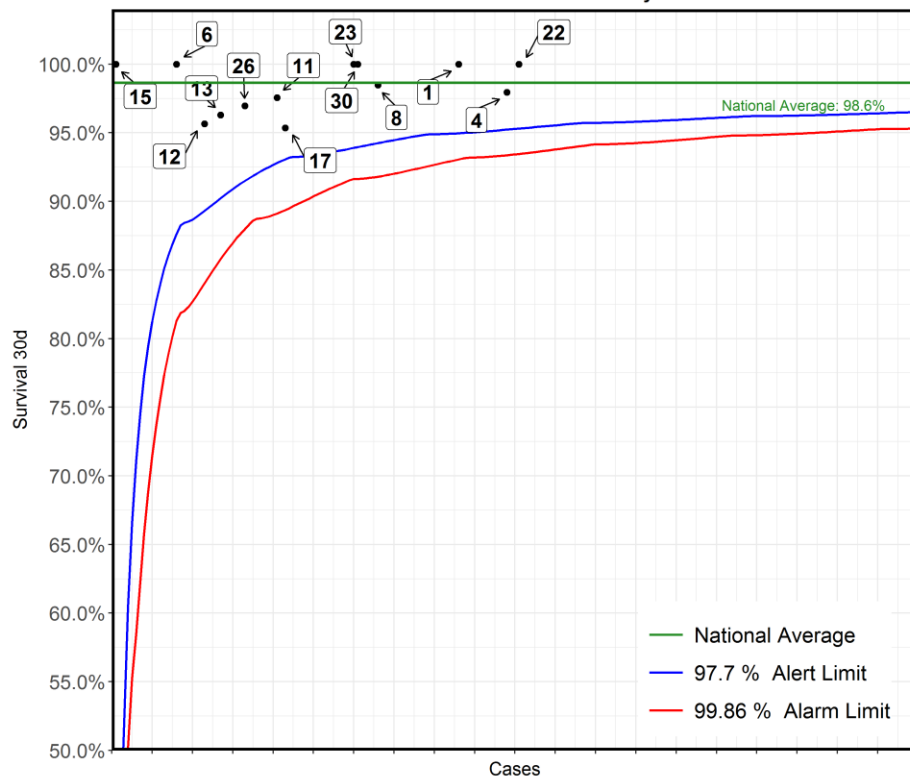
Transcatheter: Transluminal systemic-to-pulmonary collateral artery (MAPCA) procedure
2017-20 - Paediatric cases only



| No | Hospital Name | Survival 30d |
|------|--|--------------|
| **22 | London Royal Brompton Hospital | 99% |
| **17 | Leeds General Infirmary | 95% |
| 23 | Dublin Our Lady's Children's Hospital | 100% |
| 8 | Newcastle Freeman Hospital | 100% |
| 30 | Southampton Wessex Cardiothoracic Centre | 100% |
| 4 | Birmingham Children's Hospital | 100% |
| 26 | Glasgow Royal Hospital for Children | 100% |
| 11 | London Great Ormond Street Hospital for Children | 100% |
| 6 | Bristol Royal Hospital For Children | 100% |
| 1 | Liverpool Alder Hey Hospital | 100% |
| 13 | London Evelina London Children's Hospital | 100% |
| 12 | Leicester Glenfield Hospital | 100% |
| 15 | London Harley Street Clinic | 100% |

*This Funnel plot includes 1 patient(s) at least from this centre who had 2 procedures within the same 30 day time period.
The procedure for this patient has only been counted once in this display with respect to life status for statistical reasons to ensure the patient is not counted as alive or deceased twice over.

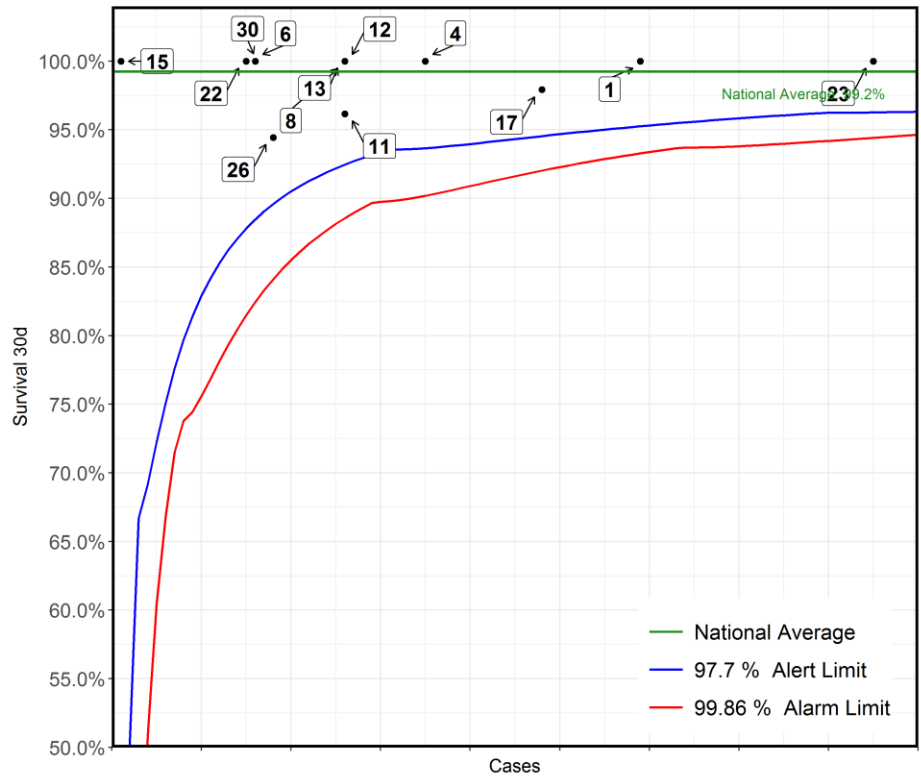
Transcatheter: Balloon dilation of pulmonary artery
2017-20 - Paediatric cases only



| No | Hospital Name | Survival 30d |
|------|--|--------------|
| *22 | London Royal Brompton Hospital | 100% |
| *4 | Birmingham Children's Hospital | 98% |
| 1 | Liverpool Alder Hey Hospital | 100% |
| *8 | Newcastle Freeman Hospital | 98% |
| **30 | Southampton Wessex Cardiothoracic Centre | 100% |
| **23 | Dublin Our Lady's Children's Hospital | 100% |
| 17 | Leeds General Infirmary | 95% |
| 11 | London Great Ormond Street Hospital for Children | 98% |
| 26 | Glasgow Royal Hospital for Children | 97% |
| 13 | London Evelina London Children's Hospital | 96% |
| 12 | Leicester Glenfield Hospital | 96% |
| 6 | Bristol Royal Hospital For Children | 100% |
| 15 | London Harley Street Clinic | 100% |

*This Funnel plot includes 1 patient(s) at least from this centre who had 2 procedures within the same 30 day time period.
The procedure for this patient has only been counted once in this display with respect to life status for statistical reasons to ensure the patient is not counted as alive or deceased twice over.

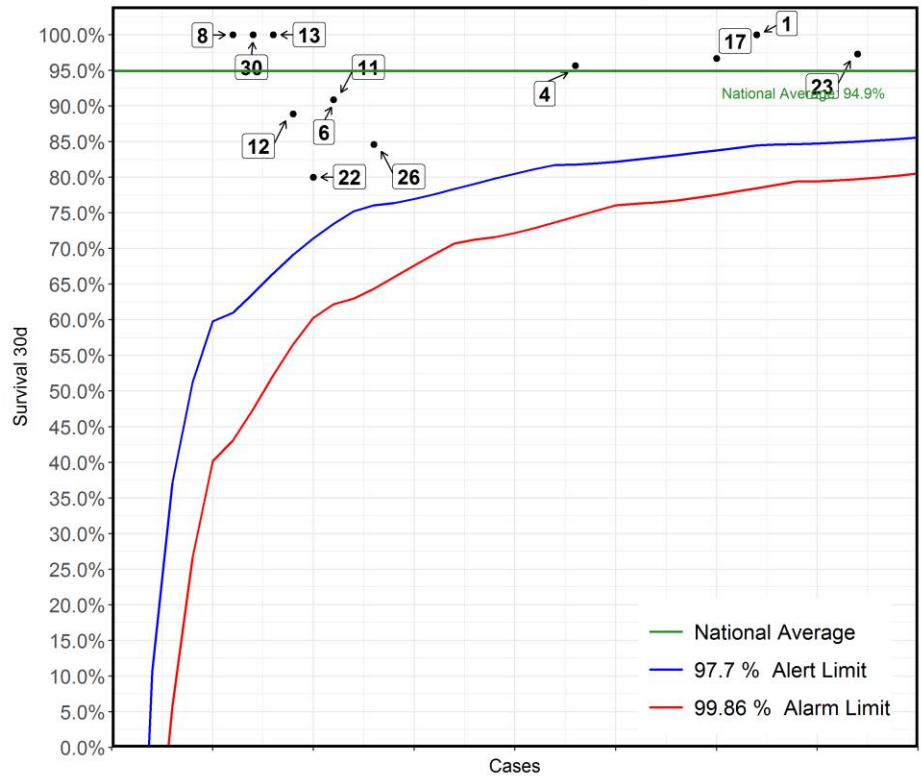
Transcatheter: Stent placement in pulmonary artery
2017-20 - Paediatric cases only



| No | Hospital Name | Survival 30d |
|-----|--|--------------|
| 23 | Dublin Our Lady's Children's Hospital | 100% |
| 1 | Liverpool Alder Hey Hospital | 100% |
| *17 | Leeds General Infirmary | 98% |
| 4 | Birmingham Children's Hospital | 100% |
| 8 | Newcastle Freeman Hospital | 100% |
| 11 | London Great Ormond Street Hospital for Children | 96% |
| 12 | Leicester Glenfield Hospital | 100% |
| 13 | London Evelina London Children's Hospital | 100% |
| 26 | Glasgow Royal Hospital for Children | 94% |
| 6 | Bristol Royal Hospital For Children | 100% |
| 30 | Southampton Wessex Cardiothoracic Centre | 100% |
| 22 | London Royal Brompton Hospital | 100% |
| 15 | London Harley Street Clinic | 100% |

*This Funnel plot includes 1 patient(s) at least from this centre who had 2 procedures within the same 30 day time period. The procedure for this patient has only been counted once in this display with respect to life status for statistical reasons to ensure the patient is not counted as alive or deceased twice over.

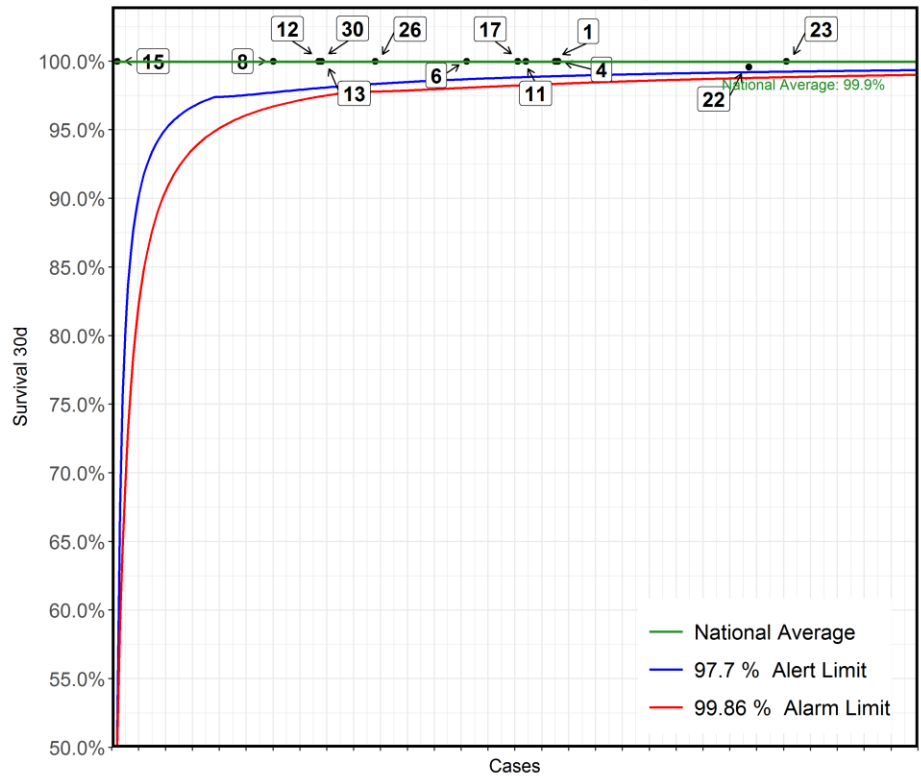
Transcatheter: Stent placement in arterial duct (PDA)
2017-20 - Paediatric cases only



| No | Hospital Name | Survival 30d |
|------|--|--------------|
| 23 | Dublin Our Lady's Children's Hospital | 97% |
| ***1 | Liverpool Alder Hey Hospital | 100% |
| 17 | Leeds General Infirmary | 97% |
| **4 | Birmingham Children's Hospital | 96% |
| *26 | Glasgow Royal Hospital for Children | 85% |
| 6 | Bristol Royal Hospital For Children | 91% |
| 11 | London Great Ormond Street Hospital for Children | 91% |
| *22 | London Royal Brompton Hospital | 80% |
| 12 | Leicester Glenfield Hospital | 89% |
| 13 | London Evelina London Children's Hospital | 100% |
| 30 | Southampton Wessex Cardiothoracic Centre | 100% |
| 8 | Newcastle Freeman Hospital | 100% |

*This Funnel plot includes 1 patient(s) at least from this centre who had 2 procedures within the same 30 day time period.
The procedure for this patient has only been counted once in this display with respect to life status for statistical reasons to ensure the patient is not counted as alive or deceased twice over.

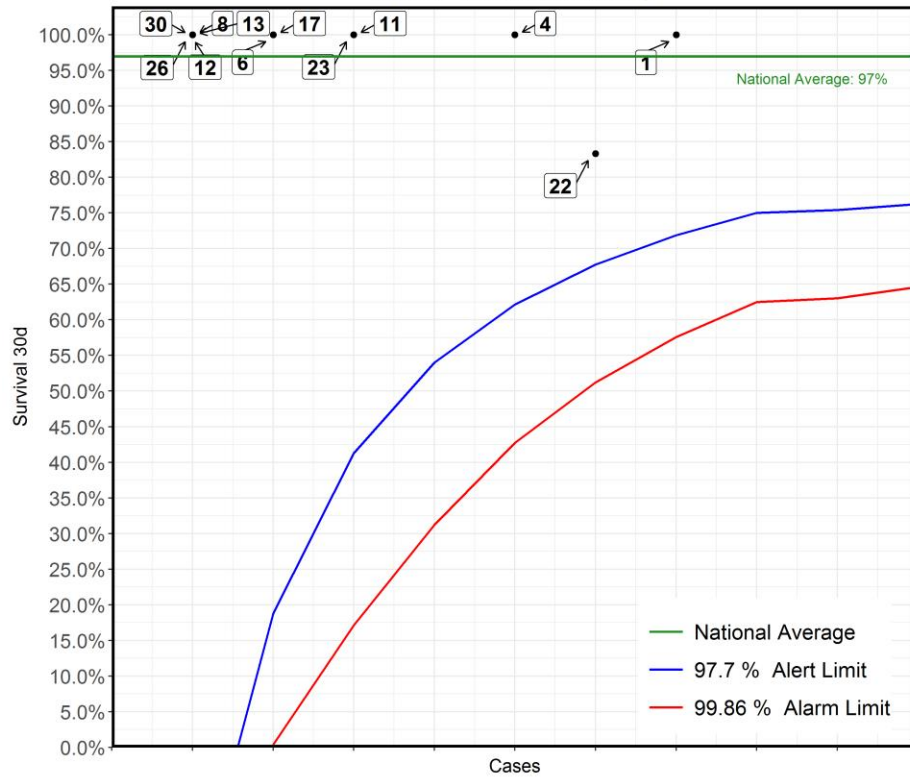
Transcatheter: Transluminal patent arterial duct (PDA) closure
2017-20 - Paediatric cases only



| No | Hospital Name | Survival 30d |
|-------|--|--------------|
| ***23 | Dublin Our Lady's Children's Hospital | 100% |
| **22 | London Royal Brompton Hospital | 100% |
| **4 | Birmingham Children's Hospital | 100% |
| ***1 | Liverpool Alder Hey Hospital | 100% |
| **11 | London Great Ormond Street Hospital for Children | 100% |
| 17 | Leeds General Infirmary | 100% |
| 6 | Bristol Royal Hospital For Children | 100% |
| *26 | Glasgow Royal Hospital for Children | 100% |
| 13 | London Evelina London Children's Hospital | 100% |
| **30 | Southampton Wessex Cardiothoracic Centre | 100% |
| 12 | Leicester Glenfield Hospital | 100% |
| *8 | Newcastle Freeman Hospital | 100% |
| 15 | London Harley Street Clinic | 100% |

*This Funnel plot includes 1 patient(s) at least from this centre who had 2 procedures within the same 30 day time period. The procedure for this patient has only been counted once in this display with respect to life status for statistical reasons to ensure the patient is not counted as alive or deceased twice over.

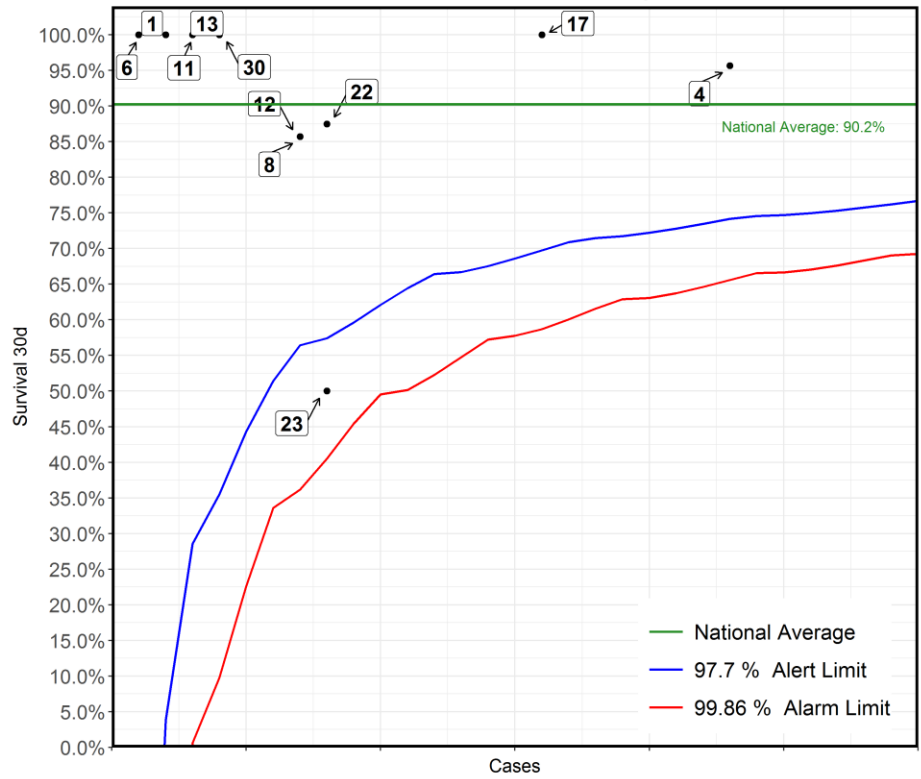
Transcatheter: Transluminal pulmonary valve perforation & dilation
2017-20 - Paediatric cases only



| No | Hospital Name | Survival 30d |
|-----|--|--------------|
| 1 | Liverpool Alder Hey Hospital | 100% |
| *22 | London Royal Brompton Hospital | 83% |
| 4 | Birmingham Children's Hospital | 100% |
| 11 | London Great Ormond Street Hospital for Children | 100% |
| 23 | Dublin Our Lady's Children's Hospital | 100% |
| 6 | Bristol Royal Hospital For Children | 100% |
| 17 | Leeds General Infirmary | 100% |
| 8 | Newcastle Freeman Hospital | 100% |
| 12 | Leicester Glenfield Hospital | 100% |
| 13 | London Evelina London Children's Hospital | 100% |
| 26 | Glasgow Royal Hospital for Children | 100% |
| 30 | Southampton Wessex Cardiothoracic Centre | 100% |

*This Funnel plot includes 1 patient(s) at least from this centre who had 2 procedures within the same 30 day time period. The procedure for this patient has only been counted once in this display with respect to life status for statistical reasons to ensure the patient is not counted as alive or deceased twice over.

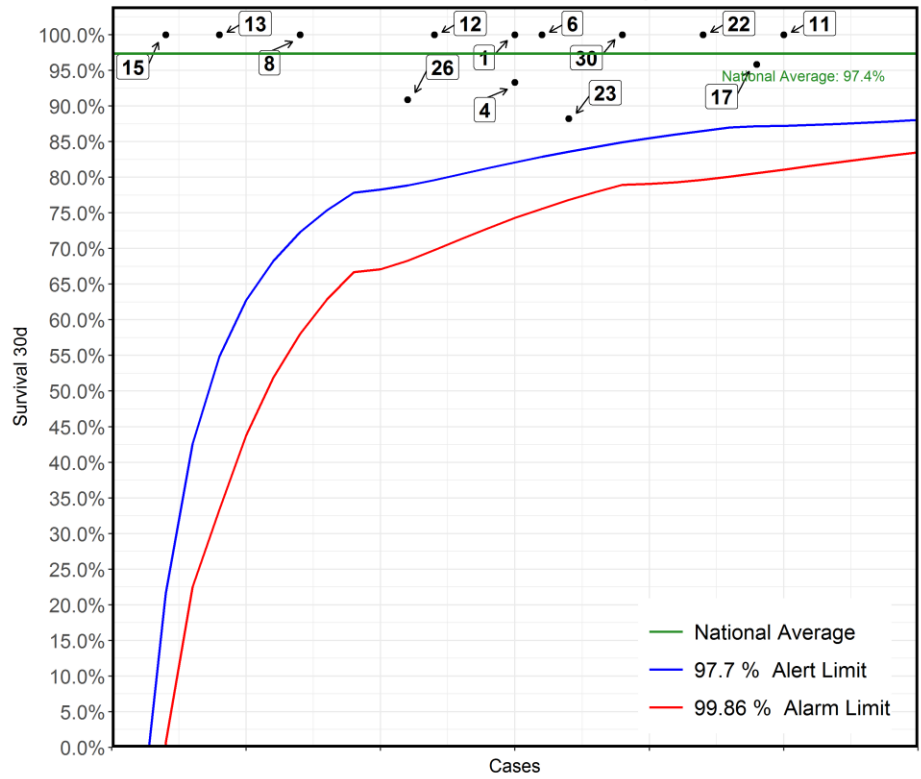
**Transcatheter: Balloon dilation and/or stenting of pulmonary vein
2017-20 - Paediatric cases only**



| No | Hospital Name | Survival 30d |
|------|--|--------------|
| *4 | Birmingham Children's Hospital | 96% |
| 17 | Leeds General Infirmary | 100% |
| *22 | London Royal Brompton Hospital | 88% |
| 23 | Dublin Our Lady's Children's Hospital | 50% |
| ***8 | Newcastle Freeman Hospital | 86% |
| *12 | Leicester Glenfield Hospital | 86% |
| *30 | Southampton Wessex Cardiothoracic Centre | 100% |
| 11 | London Great Ormond Street Hospital for Children | 100% |
| 13 | London Evelina London Children's Hospital | 100% |
| 1 | Liverpool Alder Hey Hospital | 100% |
| 6 | Bristol Royal Hospital For Children | 100% |

*This Funnel plot includes 1 patient(s) at least from this centre who had 2 procedures within the same 30 day time period.
The procedure for this patient has only been counted once in this display with respect to life status for statistical reasons to ensure the patient is not counted as alive or deceased twice over.

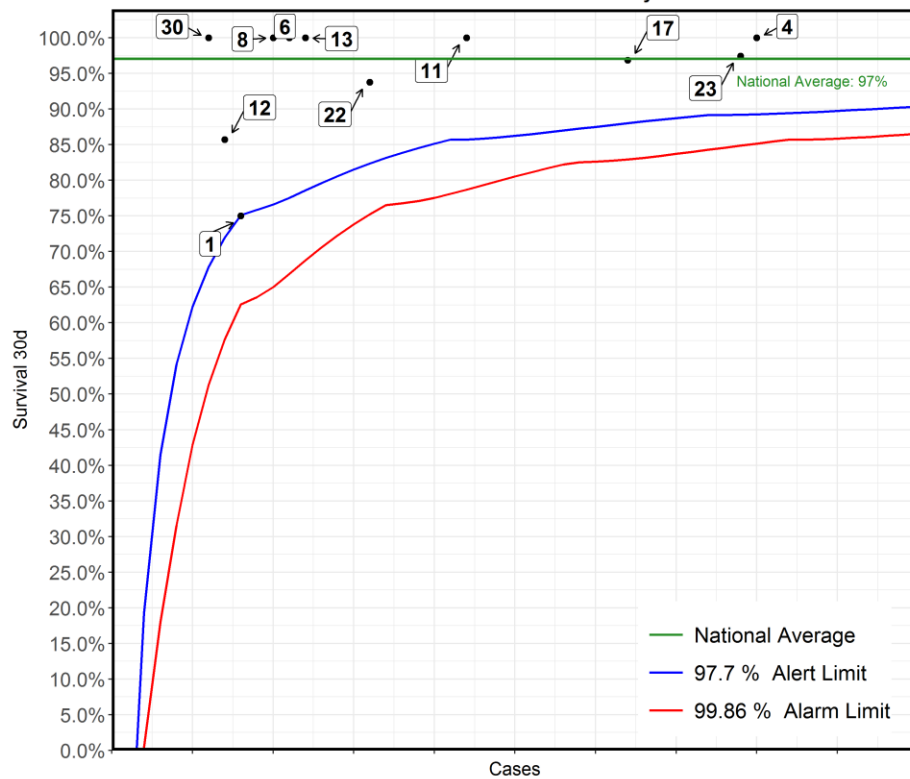
Transcatheter: Balloon dilation of aortic re-coarctation
2017-20 - Paediatric cases only



| No | Hospital Name | Survival 30d |
|-------|--|--------------|
| 11 | London Great Ormond Street Hospital for Children | 100% |
| ***17 | Leeds General Infirmary | 96% |
| **22 | London Royal Brompton Hospital | 100% |
| 30 | Southampton Wessex Cardiothoracic Centre | 100% |
| 23 | Dublin Our Lady's Children's Hospital | 88% |
| 6 | Bristol Royal Hospital For Children | 100% |
| 1 | Liverpool Alder Hey Hospital | 100% |
| 4 | Birmingham Children's Hospital | 93% |
| 12 | Leicester Glenfield Hospital | 100% |
| 26 | Glasgow Royal Hospital for Children | 91% |
| 8 | Newcastle Freeman Hospital | 100% |
| 13 | London Evelina London Children's Hospital | 100% |
| 15 | London Harley Street Clinic | 100% |

*This Funnel plot includes 1 patient(s) at least from this centre who had 2 procedures within the same 30 day time period.
The procedure for this patient has only been counted once in this display with respect to life status for statistical reasons to ensure the patient is not counted as alive or deceased twice over.

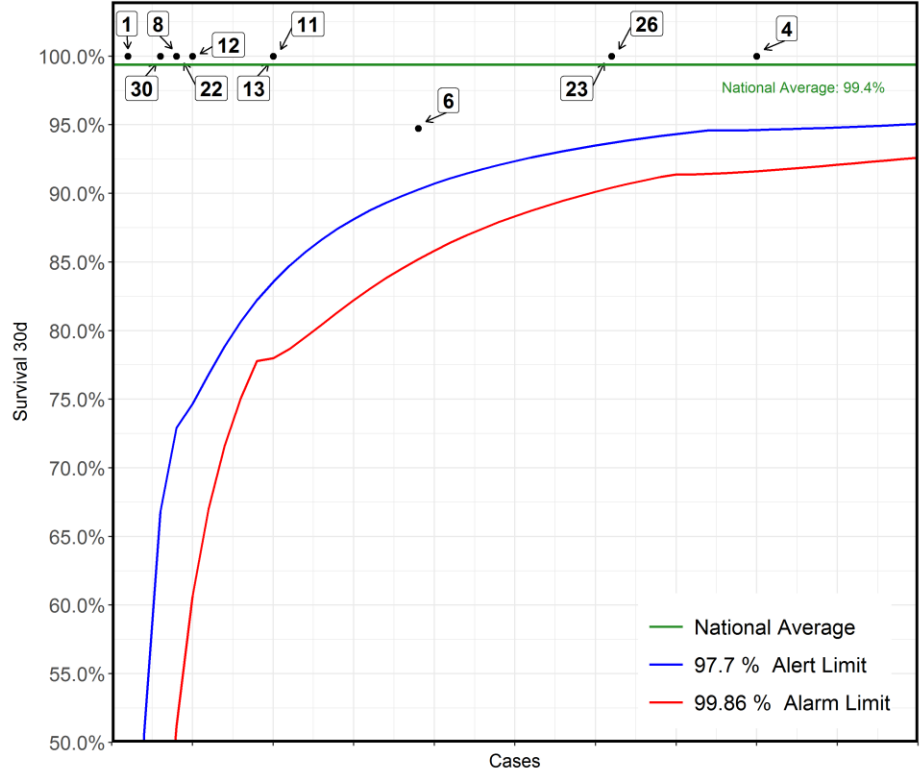
**Transcatheter: Stent placement in right ventricular outflow tract (RVOT)
2017-20 - Paediatric cases only**



| No | Hospital Name | Survival 30d |
|------|--|--------------|
| 4 | Birmingham Children's Hospital | 100% |
| **23 | Dublin Our Lady's Children's Hospital | 97% |
| 17 | Leeds General Infirmary | 97% |
| 11 | London Great Ormond Street Hospital for Children | 100% |
| 22 | London Royal Brompton Hospital | 94% |
| 13 | London Evelina London Children's Hospital | 100% |
| 6 | Bristol Royal Hospital For Children | 100% |
| 8 | Newcastle Freeman Hospital | 100% |
| 1 | Liverpool Alder Hey Hospital | 75% |
| 12 | Leicester Glenfield Hospital | 86% |
| 30 | Southampton Wessex Cardiothoracic Centre | 100% |

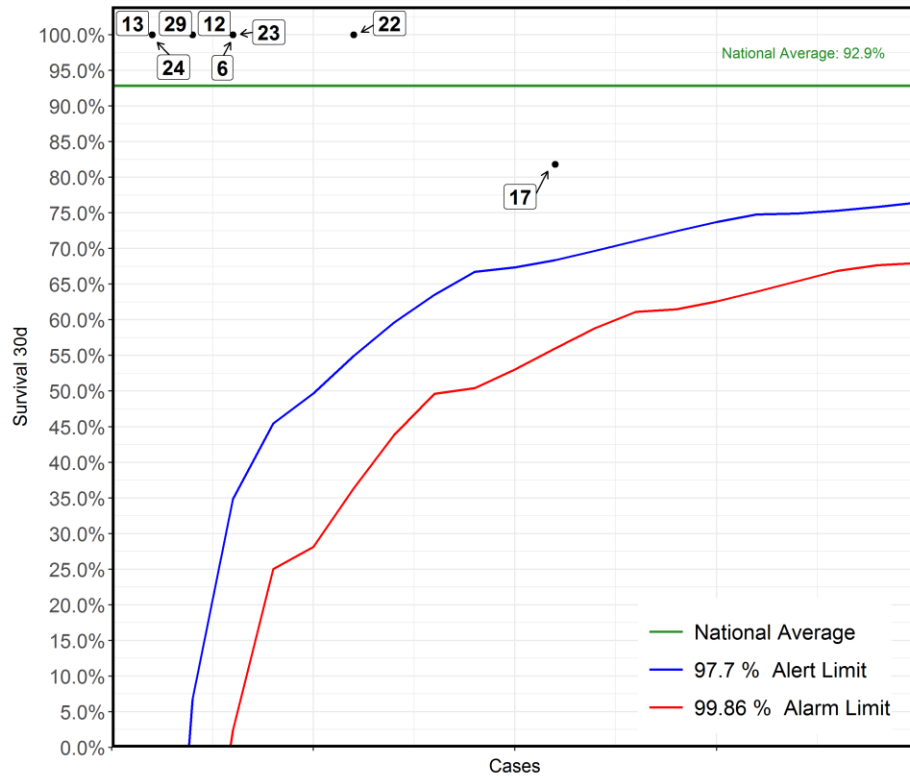
*This Funnel plot includes 1 patient(s) at least from this centre who had 2 procedures within the same 30 day time period.
The procedure for this patient has only been counted once in this display with respect to life status for statistical reasons to ensure the patient is not counted as alive or deceased twice over.

**Transcatheter: Stent redilation
2017-20 - Paediatric cases only**



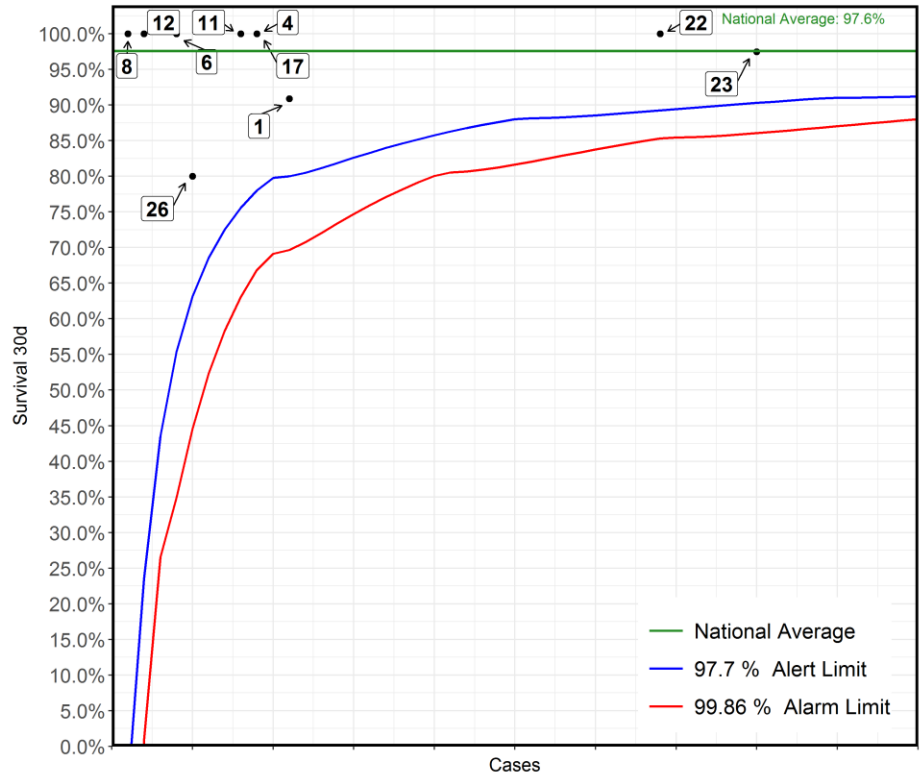
| No | Hospital Name | Survival 30d |
|----|--|--------------|
| 4 | Birmingham Children's Hospital | 100% |
| 23 | Dublin Our Lady's Children's Hospital | 100% |
| 26 | Glasgow Royal Hospital for Children | 100% |
| 6 | Bristol Royal Hospital For Children | 95% |
| 11 | London Great Ormond Street Hospital for Children | 100% |
| 13 | London Evelina London Children's Hospital | 100% |
| 12 | Leicester Glenfield Hospital | 100% |
| 8 | Newcastle Freeman Hospital | 100% |
| 22 | London Royal Brompton Hospital | 100% |
| 30 | Southampton Wessex Cardiothoracic Centre | 100% |
| 1 | Liverpool Alder Hey Hospital | 100% |

Transcatheter: Transluminal ventricular septal defect (VSD) closure
2017-20 - ACHD cases only



| No | Hospital Name | Survival 30d |
|----|---|--------------|
| 17 | Leeds General Infirmary | 82% |
| 22 | London Royal Brompton Hospital | 100% |
| 6 | Bristol Royal Hospital For Children | 100% |
| 23 | Dublin Our Lady's Children's Hospital | 100% |
| 12 | Leicester Glenfield Hospital | 100% |
| 13 | London Evelina London Children's Hospital | 100% |
| 24 | Birmingham Queen Elizabeth Hospital | 100% |
| 29 | London Barts Heart Centre | 100% |

Transcatheter: Transluminal ventricular septal defect (VSD) closure
2017-20 - Paediatric cases only



| No | Hospital Name | Survival 30d |
|----|--|--------------|
| 23 | Dublin Our Lady's Children's Hospital | 98% |
| 22 | London Royal Brompton Hospital | 100% |
| *1 | Liverpool Alder Hey Hospital | 91% |
| 4 | Birmingham Children's Hospital | 100% |
| 17 | Leeds General Infirmary | 100% |
| 11 | London Great Ormond Street Hospital for Children | 100% |
| 26 | Glasgow Royal Hospital for Children | 80% |
| 6 | Bristol Royal Hospital For Children | 100% |
| 12 | Leicester Glenfield Hospital | 100% |
| 8 | Newcastle Freeman Hospital | 100% |

*This Funnel plot includes 1 patient(s) at least from this centre who had 2 procedures within the same 30 day time period. The procedure for this patient has only been counted once in this display with respect to life status for statistical reasons to ensure the patient is not counted as alive or deceased twice over.