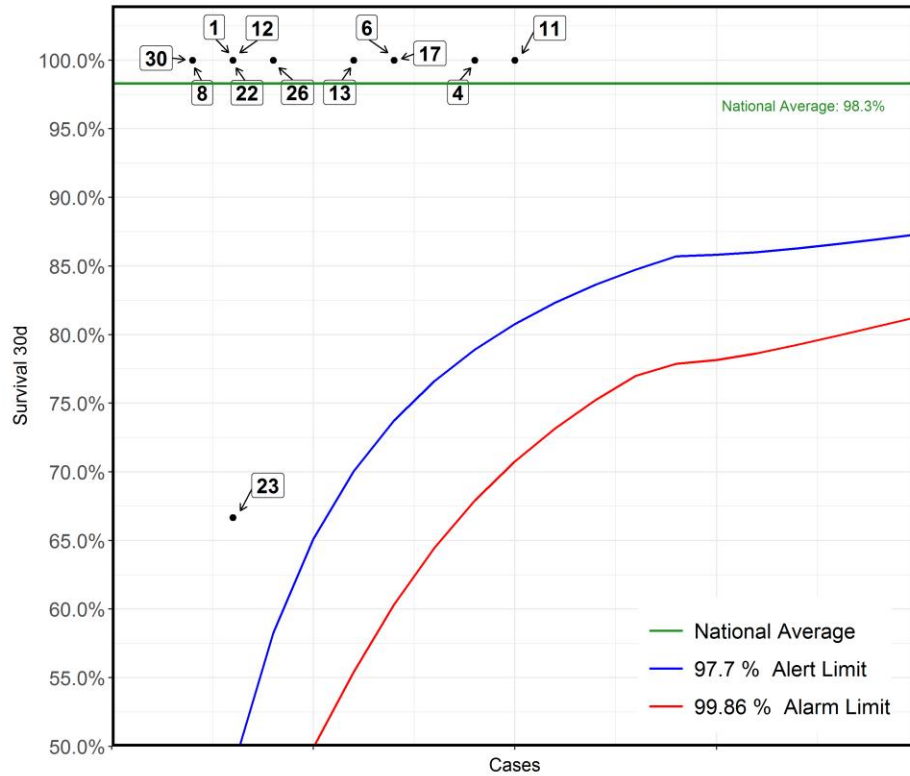


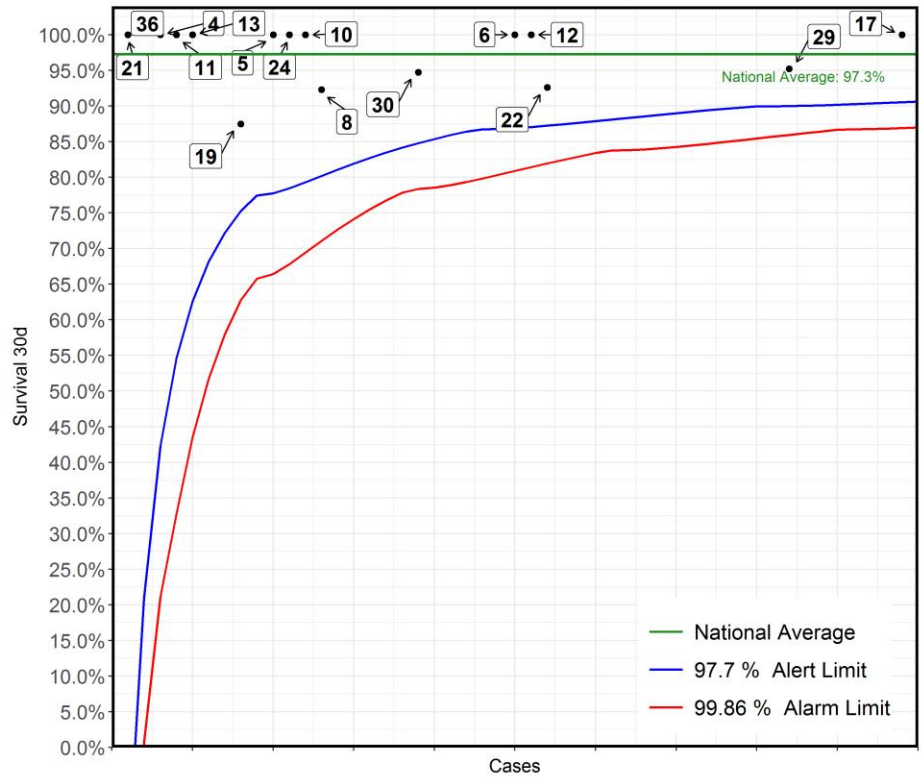
**Surgical: Anomalous coronary artery origin or course (eg ALCAPA) repair
2017-20 - Paediatric cases only**



No	Hospital Name	Survival 30d
11	London Great Ormond Street Hospital for Children	100%
4	Birmingham Children's Hospital	100%
6	Bristol Royal Hospital For Children	100%
17	Leeds General Infirmary	100%
13	London Evelina London Children's Hospital	100%
26	Glasgow Royal Hospital for Children	100%
1	Liverpool Alder Hey Hospital	100%
12	Leicester Glenfield Hospital	100%
22	London Royal Brompton Hospital	100%
*23	Dublin Our Lady's Children's Hospital	67%
8	Newcastle Freeman Hospital	100%
30	Southampton Wessex Cardiothoracic Centre	100%

*This Funnel plot includes 1 patient(s) at least from this centre who had 2 procedures within the same 30 day time period. The procedure for this patient has only been counted once in this display with respect to life status for statistical reasons to ensure the patient is not counted as alive or deceased twice over.

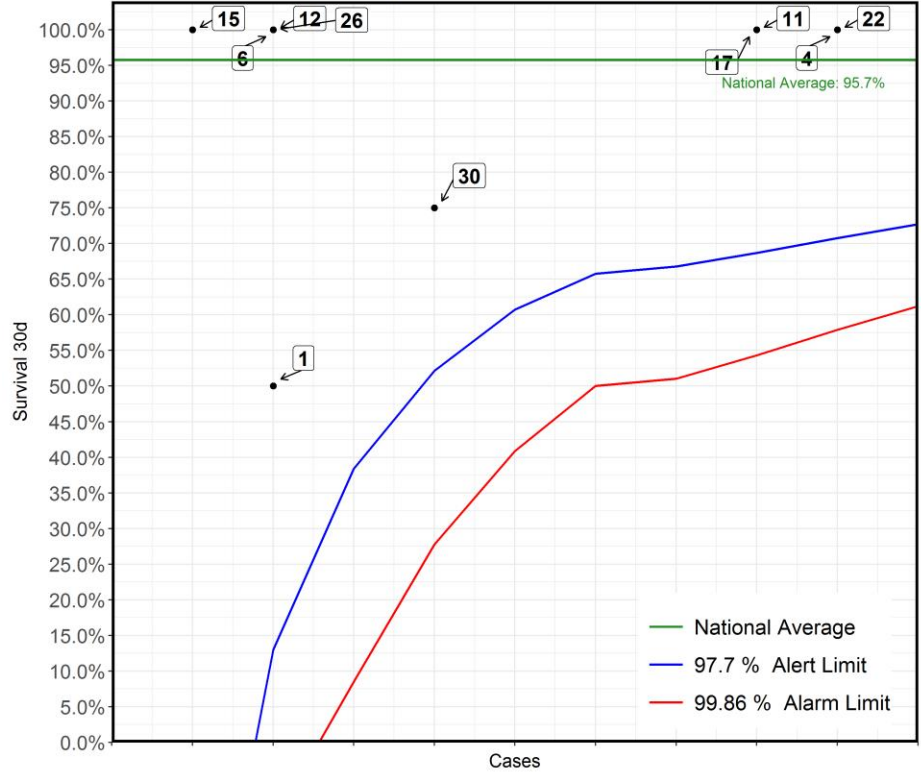
Surgical: Aortic root replacement (non-Ross)
2017-20 - ACHD cases only



No	Hospital Name	Survival 30d
17	Leeds General Infirmary	100%
29	London Barts Heart Centre	95%
22	London Royal Brompton Hospital	93%
12	Leicester Glenfield Hospital	100%
6	Bristol Royal Hospital For Children	100%
30	Southampton Wessex Cardiothoracic Centre	95%
8	Newcastle Freeman Hospital	92%
10	Glasgow Golden Jubilee National Hospital	100%
24	Birmingham Queen Elizabeth Hospital	100%
5	Liverpool Heart and Chest Hospital	100%
19	Manchester Royal Infirmary	88%
*13	London Evelina London Children's Hospital	100%
11	London Great Ormond Street Hospital for Children	100%
4	Birmingham Children's Hospital	100%
21	Sheffield Northern General Hospital	100%
36	Cardiff University Hospital of Wales	100%

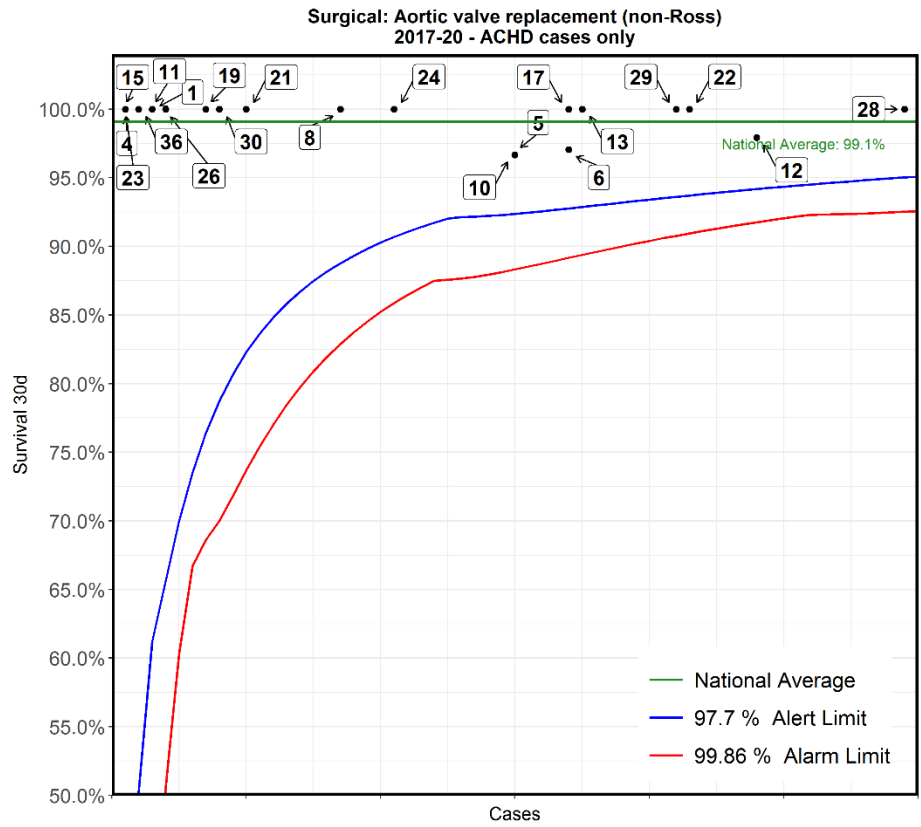
*This Funnel plot includes 1 patient(s) at least from this centre who had 2 procedures within the same 30 day time period. The procedure for this patient has only been counted once in this display with respect to life status for statistical reasons to ensure the patient is not counted as alive or deceased twice over.

Surgical: Aortic root replacement (non-Ross)
2017-20 - Paediatric cases only



No	Hospital Name	Survival 30d
4	Birmingham Children's Hospital	100%
22	London Royal Brompton Hospital	100%
*11	London Great Ormond Street Hospital for Children	100%
17	Leeds General Infirmary	100%
30	Southampton Wessex Cardiothoracic Centre	75%
1	Liverpool Alder Hey Hospital	50%
6	Bristol Royal Hospital For Children	100%
12	Leicester Glenfield Hospital	100%
26	Glasgow Royal Hospital for Children	100%
15	London Harley Street Clinic	100%

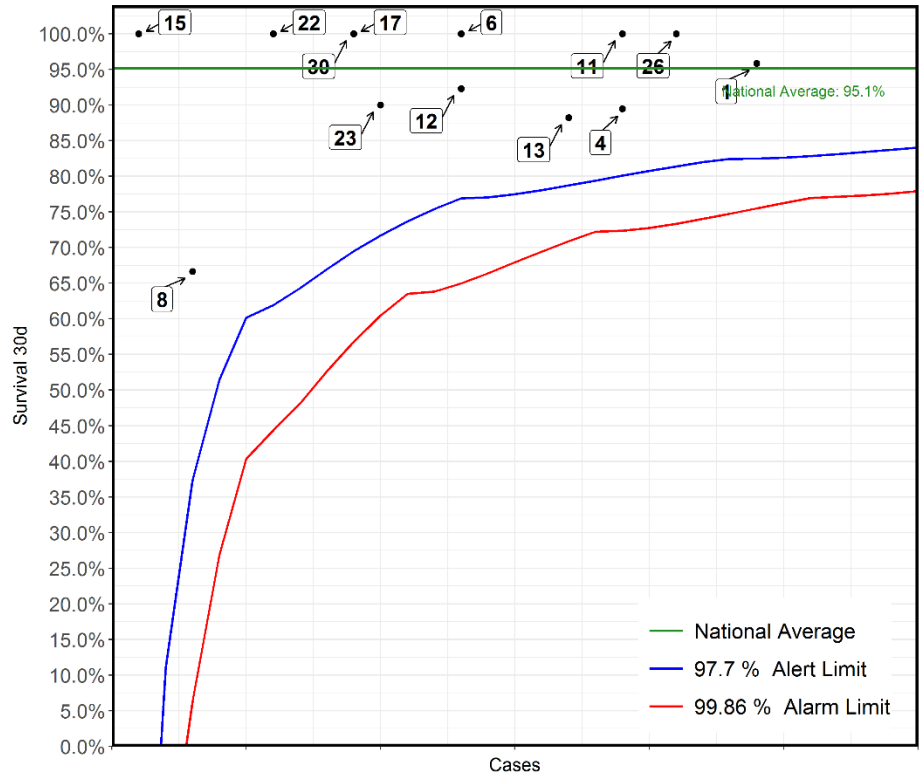
*This Funnel plot includes 1 patient(s) at least from this centre who had 2 procedures within the same 30 day time period. The procedure for this patient has only been counted once in this display with respect to life status for statistical reasons to ensure the patient is not counted as alive or deceased twice over.



No	Hospital Name	Survival 30d
28	Belfast Royal Victoria Hospital	100%
12	Leicester Glenfield Hospital	98%
*22	London Royal Brompton Hospital	100%
29	London Barts Heart Centre	100%
13	London Evelina London Children's Hospital	100%
6	Bristol Royal Hospital For Children	97%
17	Leeds General Infirmary	100%
5	Liverpool Heart and Chest Hospital	97%
*10	Glasgow Golden Jubilee National Hospital	97%
24	Birmingham Queen Elizabeth Hospital	100%
8	Newcastle Freeman Hospital	100%
21	Sheffield Northern General Hospital	100%
30	Southampton Wessex Cardiothoracic Centre	100%
19	Manchester Royal Infirmary	100%
*26	Glasgow Royal Hospital for Children	100%
1	Liverpool Alder Hey Hospital	100%
11	London Great Ormond Street Hospital for Children	100%
36	Cardiff University Hospital of Wales	100%
4	Birmingham Children's Hospital	100%
15	London Harley Street Clinic	100%
23	Dublin Our Lady's Children's Hospital	100%

*This Funnel plot includes 1 patient(s) at least from this centre who had 2 procedures within the same 30 day time period.
The procedure for this patient has only been counted once in this display with respect to life status for statistical reasons to ensure the patient is not counted as alive or deceased twice over.

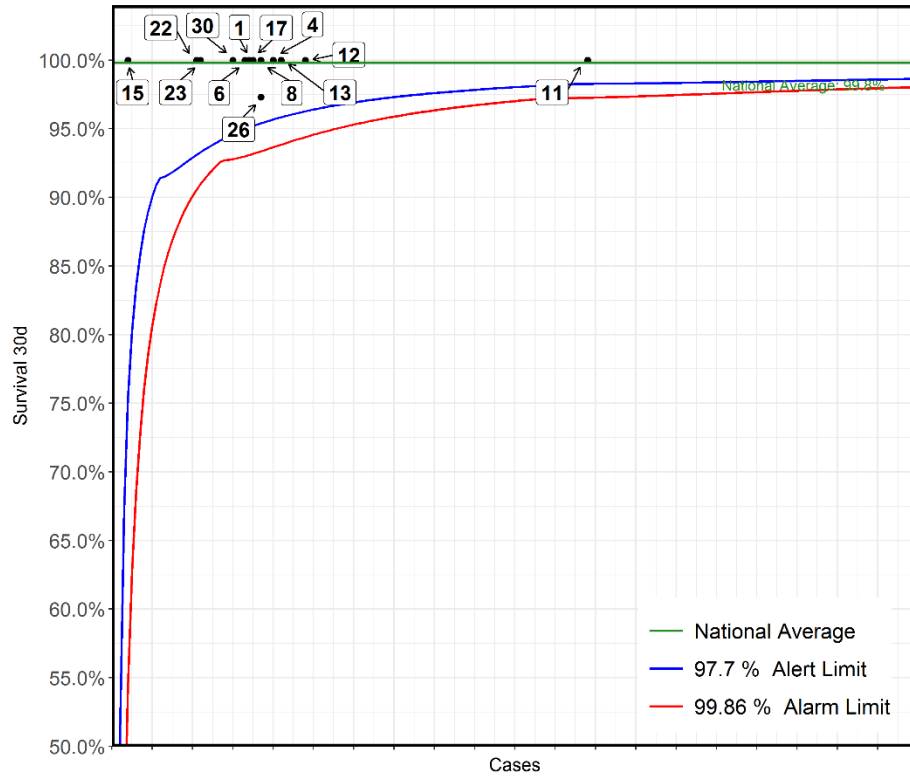
**Surgical: Systemic-to-pulmonary arterial shunt procedure (includes Blalock-Taussig & central shunts)
2017-20 - Paediatric cases only**



No	Hospital Name	Survival 30d
1	Liverpool Alder Hey Hospital	96%
26	Glasgow Royal Hospital for Children	100%
4	Birmingham Children's Hospital	89%
**11	London Great Ormond Street Hospital for Children	100%
**13	London Evelina London Children's Hospital	88%
6	Bristol Royal Hospital For Children	100%
*12	Leicester Glenfield Hospital	92%
*23	Dublin Our Lady's Children's Hospital	90%
17	Leeds General Infirmary	100%
*30	Southampton Wessex Cardiothoracic Centre	100%
22	London Royal Brompton Hospital	100%
8	Newcastle Freeman Hospital	67%
15	London Harley Street Clinic	100%

*This Funnel plot includes 1 patient(s) at least from this centre who had 2 procedures within the same 30 day time period.
The procedure for this patient has only been counted once in this display with respect to life status for statistical reasons to ensure the patient is not counted as alive or deceased twice over.

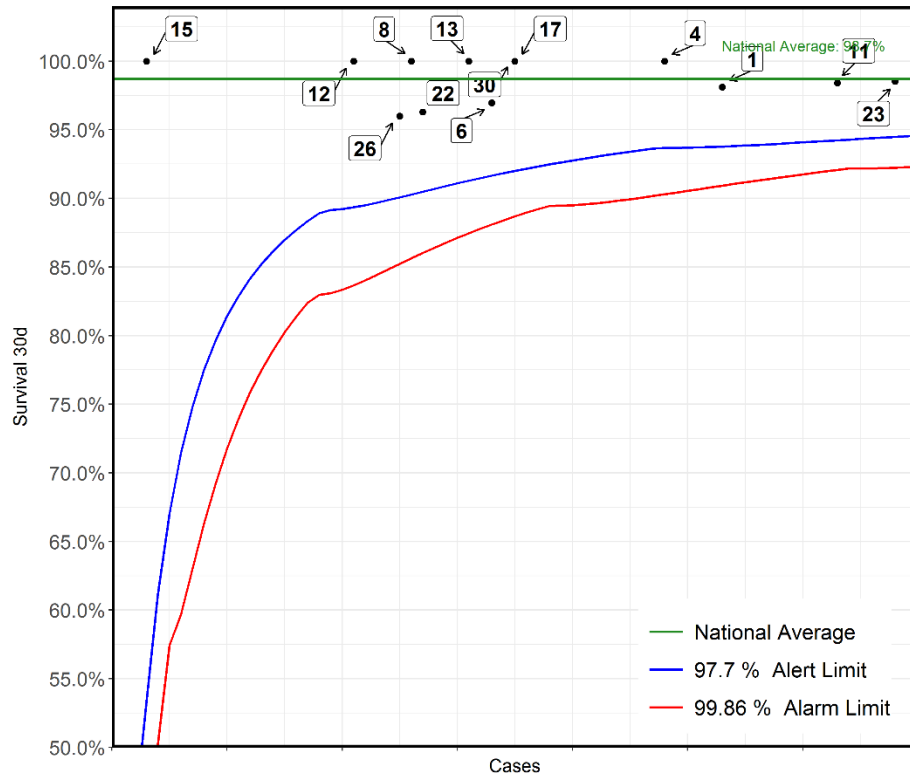
Surgical: Atrial septal defect (ASD) closure - surgical
2017-20 - Paediatric cases only



No	Hospital Name	Survival 30d
11	London Great Ormond Street Hospital for Children	100%
12	Leicester Glenfield Hospital	100%
13	London Evelina London Children's Hospital	100%
4	Birmingham Children's Hospital	100%
8	Newcastle Freeman Hospital	100%
*26	Glasgow Royal Hospital for Children	97%
17	Leeds General Infirmary	100%
1	Liverpool Alder Hey Hospital	100%
6	Bristol Royal Hospital For Children	100%
30	Southampton Wessex Cardiothoracic Centre	100%
23	Dublin Our Lady's Children's Hospital	100%
22	London Royal Brompton Hospital	100%
15	London Harley Street Clinic	100%

*This Funnel plot includes 1 patient(s) at least from this centre who had 2 procedures within the same 30 day time period.
The procedure for this patient has only been counted once in this display with respect to life status for statistical reasons to ensure the patient is not counted as alive or deceased twice over.

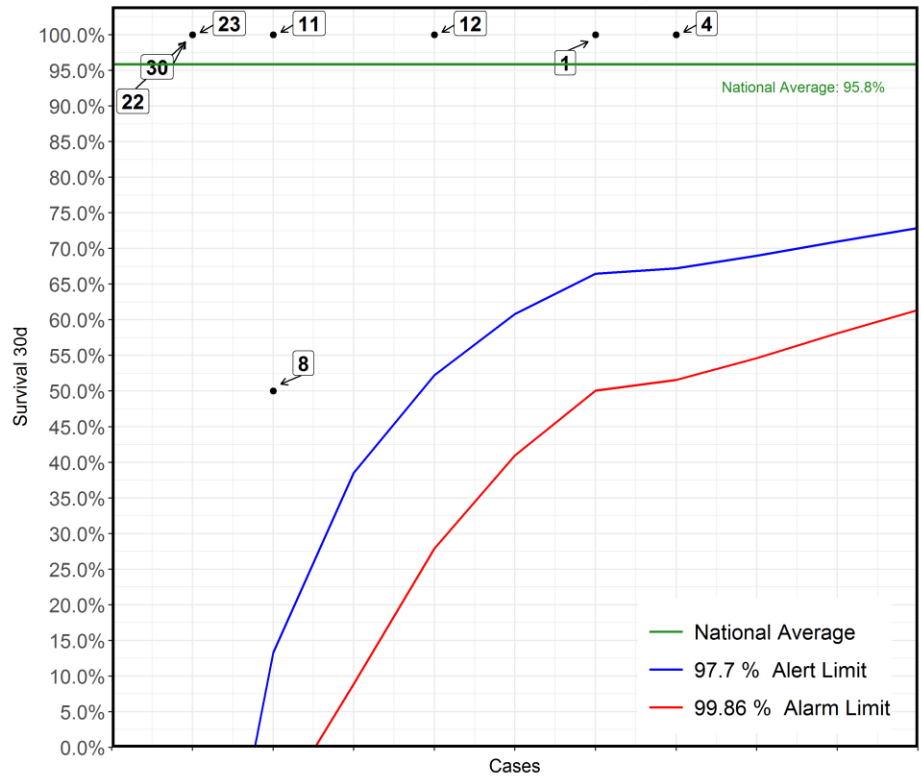
**Surgical: Complete atrioventricular septal defect (AVSD) repair
2017-20 - Paediatric cases only**



No	Hospital Name	Survival 30d
23	Dublin Our Lady's Children's Hospital	99%
11	London Great Ormond Street Hospital for Children	98%
1	Liverpool Alder Hey Hospital	98%
4	Birmingham Children's Hospital	100%
17	Leeds General Infirmary	100%
30	Southampton Wessex Cardiothoracic Centre	100%
6	Bristol Royal Hospital For Children	97%
13	London Evelina London Children's Hospital	100%
22	London Royal Brompton Hospital	96%
8	Newcastle Freeman Hospital	100%
*26	Glasgow Royal Hospital for Children	96%
*12	Leicester Glenfield Hospital	100%
15	London Harley Street Clinic	100%

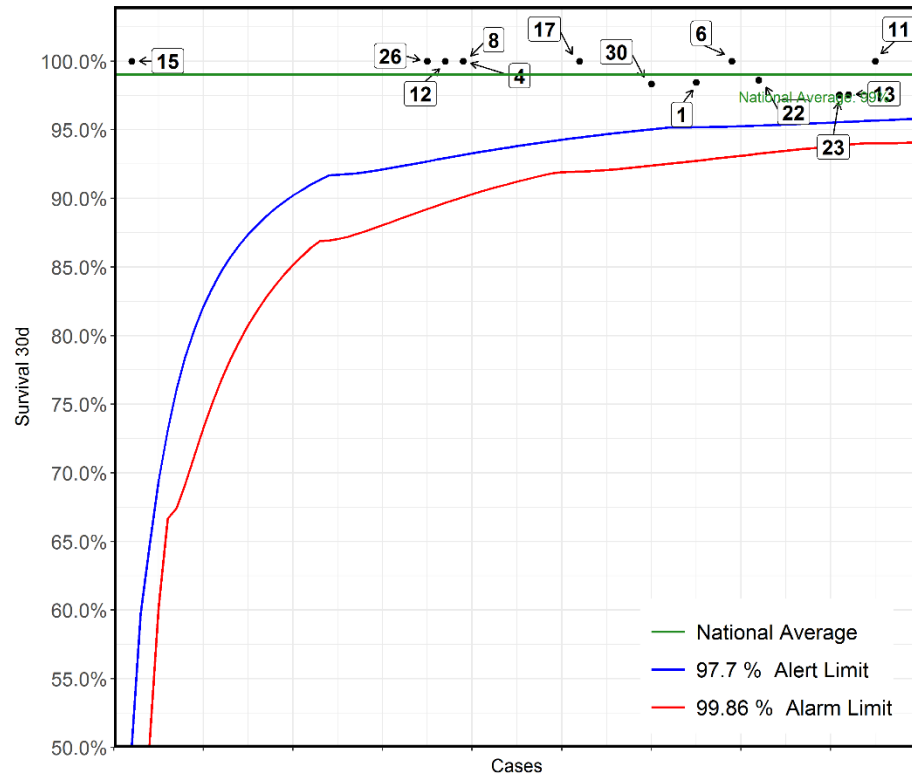
*This Funnel plot includes 1 patient(s) at least from this centre who had 2 procedures within the same 30 day time period.
The procedure for this patient has only been counted once in this display with respect to life status for statistical reasons to ensure the patient is not counted as alive or deceased twice over.

Surgical: Double Switch or Rastelli-Senning repair of ccTGA
2017-20 - Paediatric cases only



No	Hospital Name	Survival 30d
4	Birmingham Children's Hospital	100%
1	Liverpool Alder Hey Hospital	100%
12	Leicester Glenfield Hospital	100%
8	Newcastle Freeman Hospital	50%
11	London Great Ormond Street Hospital for Children	100%
22	London Royal Brompton Hospital	100%
23	Dublin Our Lady's Children's Hospital	100%
30	Southampton Wessex Cardiothoracic Centre	100%

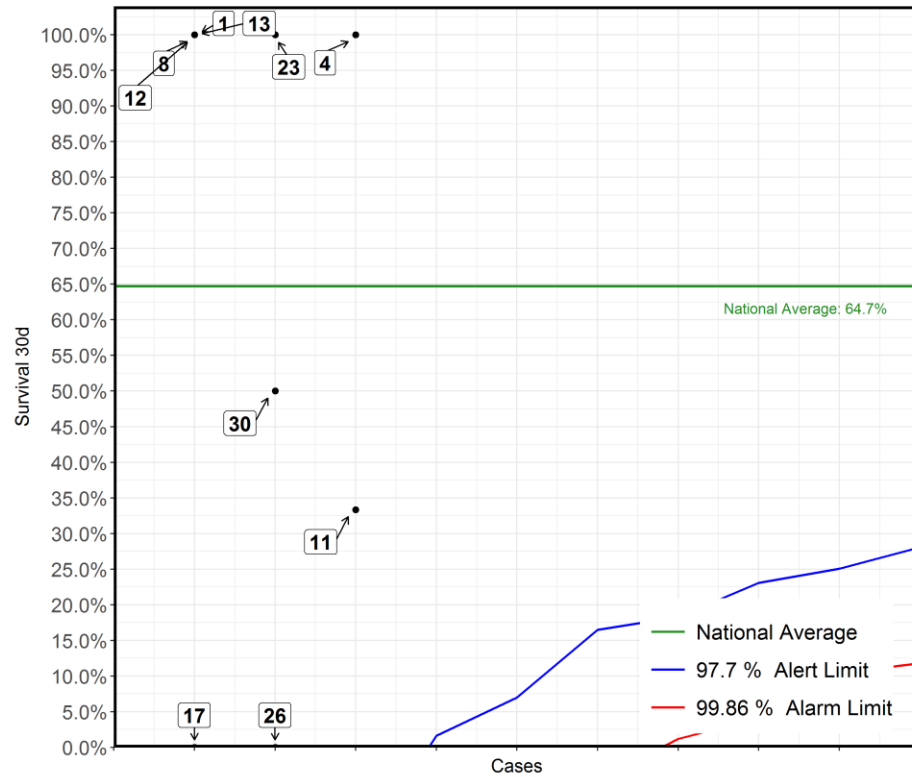
**Surgical: Isolated coarctation/hypoplasia of aorta repair
2017-20 - Paediatric cases only**



No	Hospital Name	Survival 30d
11	London Great Ormond Street Hospital for Children	100%
**13	London Evelina London Children's Hospital	98%
*23	Dublin Our Lady's Children's Hospital	98%
22	London Royal Brompton Hospital	99%
6	Bristol Royal Hospital For Children	100%
*1	Liverpool Alder Hey Hospital	98%
*30	Southampton Wessex Cardiothoracic Centre	98%
17	Leeds General Infirmary	100%
4	Birmingham Children's Hospital	100%
*8	Newcastle Freeman Hospital	100%
12	Leicester Glenfield Hospital	100%
26	Glasgow Royal Hospital for Children	100%
15	London Harley Street Clinic	100%

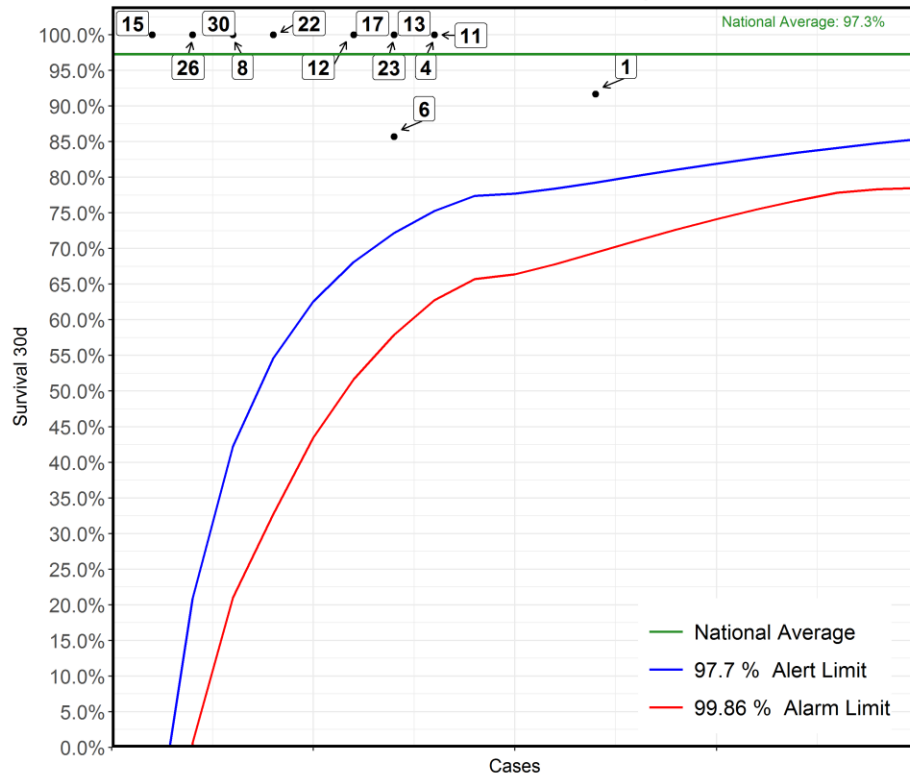
*This Funnel plot includes 1 patient(s) at least from this centre who had 2 procedures within the same 30 day time period.
The procedure for this patient has only been counted once in this display with respect to life status for statistical reasons to ensure the patient is not counted as alive or deceased twice over.

**Surgical: Common arterial trunk (truncus arteriosus) and aorta arch repair
2017-20 - Paediatric cases only**



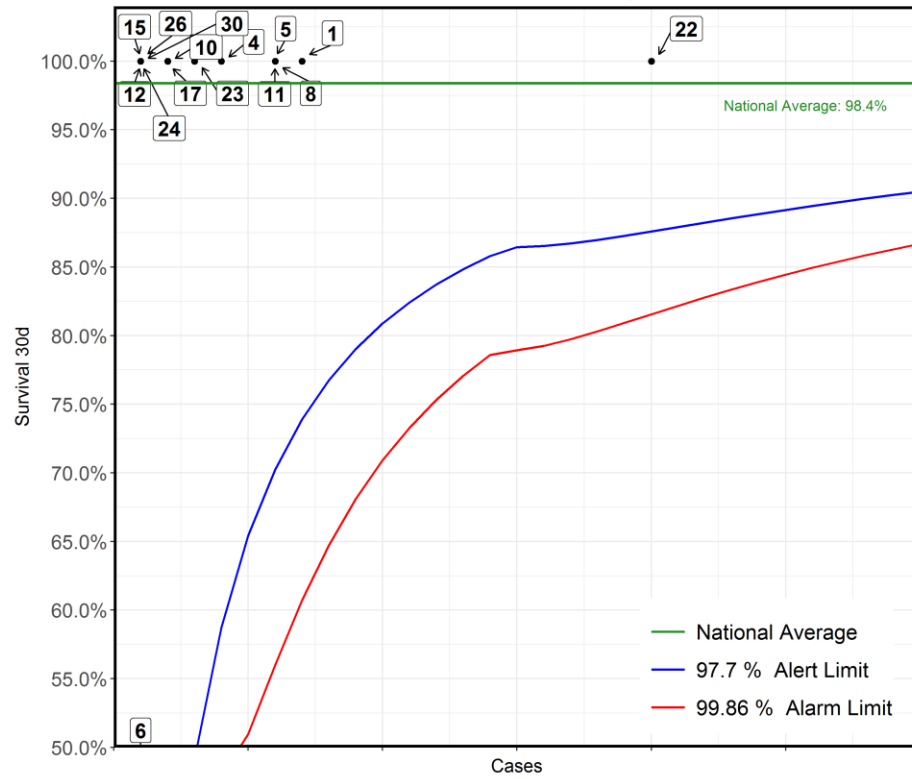
No	Hospital Name	Survival 30d
4	Birmingham Children's Hospital	100%
11	London Great Ormond Street Hospital for Children	33%
23	Dublin Our Lady's Children's Hospital	100%
26	Glasgow Royal Hospital for Children	0%
30	Southampton Wessex Cardiothoracic Centre	50%
1	Liverpool Alder Hey Hospital	100%
8	Newcastle Freeman Hospital	100%
12	Leicester Glenfield Hospital	100%
13	London Evelina London Children's Hospital	100%
17	Leeds General Infirmary	0%

Surgical: Common arterial trunk (truncus arteriosus) repair
2017-20 - Paediatric cases only



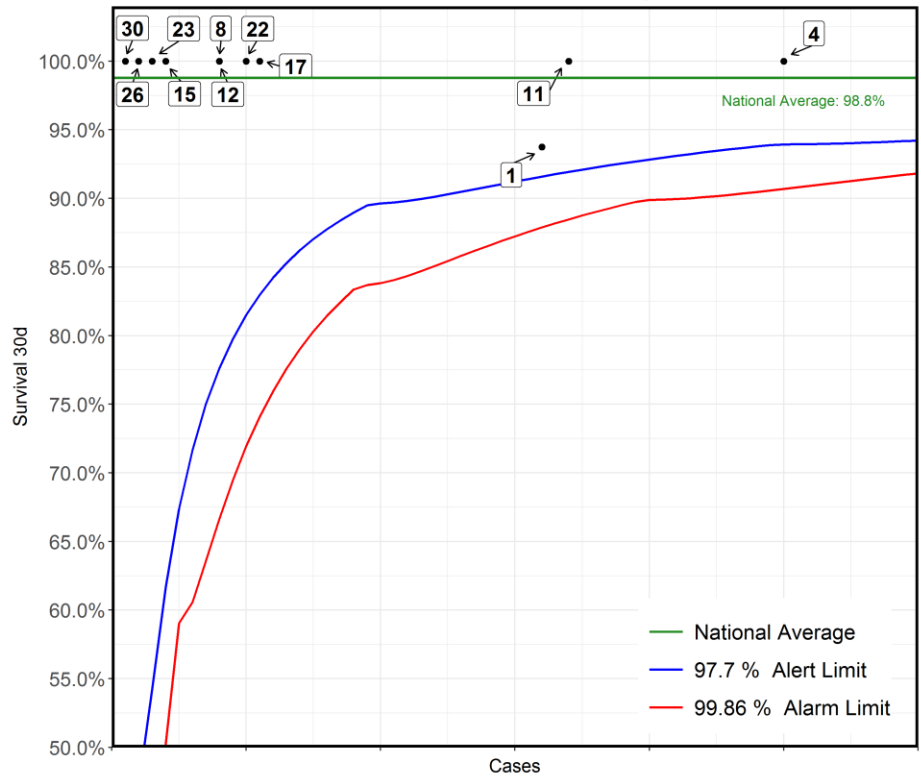
No	Hospital Name	Survival 30d
1	Liverpool Alder Hey Hospital	92%
4	Birmingham Children's Hospital	100%
11	London Great Ormond Street Hospital for Children	100%
6	Bristol Royal Hospital For Children	86%
13	London Evelina London Children's Hospital	100%
23	Dublin Our Lady's Children's Hospital	100%
12	Leicester Glenfield Hospital	100%
17	Leeds General Infirmary	100%
22	London Royal Brompton Hospital	100%
8	Newcastle Freeman Hospital	100%
26	Glasgow Royal Hospital for Children	100%
30	Southampton Wessex Cardiothoracic Centre	100%
15	London Harley Street Clinic	100%

Surgical: Replacement of cardiac conduit
2017-20 - ACHD cases only



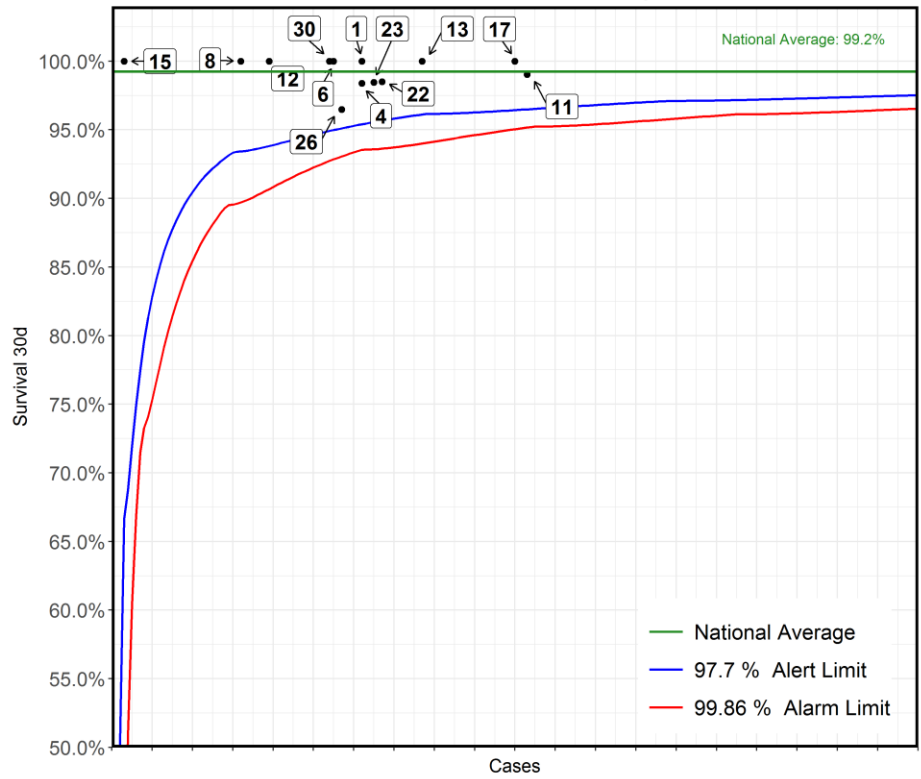
No	Hospital Name	Survival 30d
22	London Royal Brompton Hospital	100%
1	Liverpool Alder Hey Hospital	100%
5	Liverpool Heart and Chest Hospital	100%
8	Newcastle Freeman Hospital	100%
11	London Great Ormond Street Hospital for Children	100%
4	Birmingham Children's Hospital	100%
23	Dublin Our Lady's Children's Hospital	100%
10	Glasgow Golden Jubilee National Hospital	100%
17	Leeds General Infirmary	100%
6	Bristol Royal Hospital For Children	0%
12	Leicester Glenfield Hospital	100%
15	London Harley Street Clinic	100%
24	Birmingham Queen Elizabeth Hospital	100%
26	Glasgow Royal Hospital for Children	100%
30	Southampton Wessex Cardiothoracic Centre	100%

Surgical: Replacement of cardiac conduit
2017-20 - Paediatric cases only



No	Hospital Name	Survival 30d
4	Birmingham Children's Hospital	100%
11	London Great Ormond Street Hospital for Children	100%
1	Liverpool Alder Hey Hospital	94%
17	Leeds General Infirmary	100%
22	London Royal Brompton Hospital	100%
8	Newcastle Freeman Hospital	100%
12	Leicester Glenfield Hospital	100%
15	London Harley Street Clinic	100%
23	Dublin Our Lady's Children's Hospital	100%
26	Glasgow Royal Hospital for Children	100%
30	Southampton Wessex Cardiothoracic Centre	100%

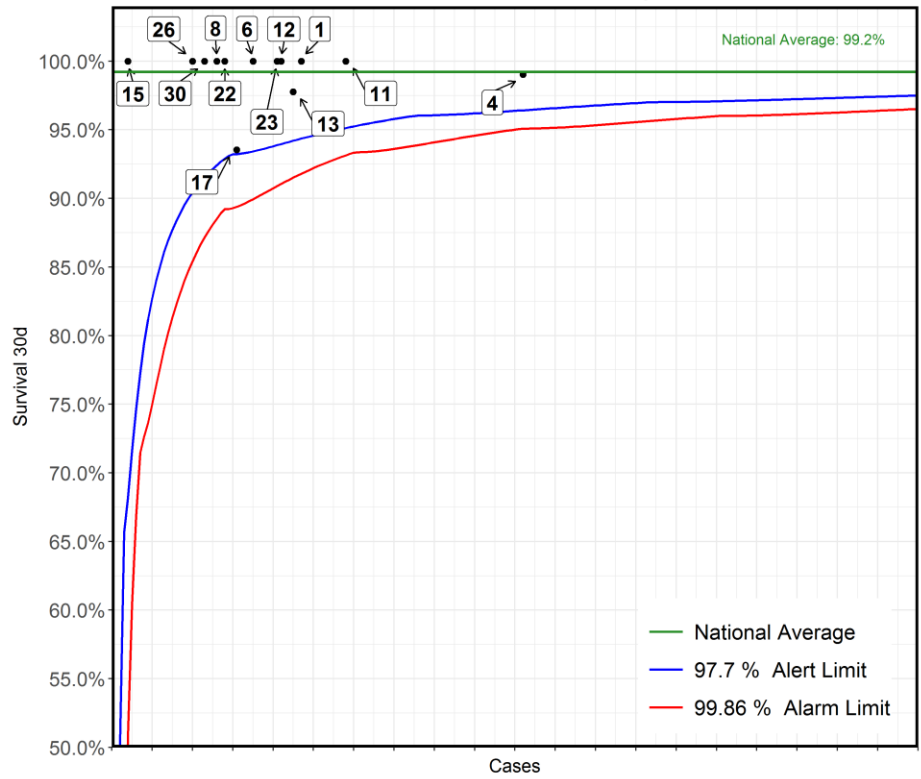
**Surgical: Tetralogy of Fallot and Fallot-type double outlet right ventricle repair
2017-20 - Paediatric cases only**



No	Hospital Name	Survival 30d
11	London Great Ormond Street Hospital for Children	99%
17	Leeds General Infirmary	100%
13	London Evelina London Children's Hospital	100%
*22	London Royal Brompton Hospital	99%
23	Dublin Our Lady's Children's Hospital	98%
1	Liverpool Alder Hey Hospital	100%
4	Birmingham Children's Hospital	98%
26	Glasgow Royal Hospital for Children	96%
6	Bristol Royal Hospital For Children	100%
30	Southampton Wessex Cardiothoracic Centre	100%
12	Leicester Glenfield Hospital	100%
8	Newcastle Freeman Hospital	100%
15	London Harley Street Clinic	100%

*This Funnel plot includes 1 patient(s) at least from this centre who had 2 procedures within the same 30 day time period. The procedure for this patient has only been counted once in this display with respect to life status for statistical reasons to ensure the patient is not counted as alive or deceased twice over.

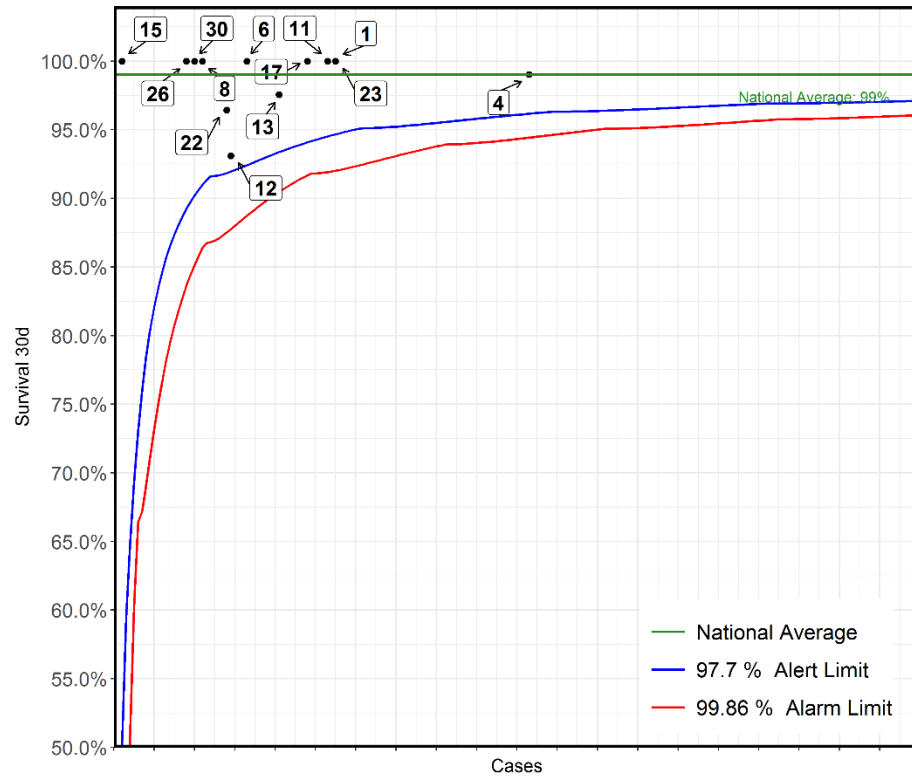
**Surgical: Fontan or Total Cavopulmonary Connection (TCPC)
2017-20 - Paediatric cases only**



No	Hospital Name	Survival 30d
4	Birmingham Children's Hospital	99%
*11	London Great Ormond Street Hospital for Children	100%
1	Liverpool Alder Hey Hospital	100%
13	London Evelina London Children's Hospital	98%
12	Leicester Glenfield Hospital	100%
23	Dublin Our Lady's Children's Hospital	100%
6	Bristol Royal Hospital For Children	100%
17	Leeds General Infirmary	94%
*22	London Royal Brompton Hospital	100%
8	Newcastle Freeman Hospital	100%
30	Southampton Wessex Cardiothoracic Centre	100%
26	Glasgow Royal Hospital for Children	100%
15	London Harley Street Clinic	100%

*This Funnel plot includes 1 patient(s) at least from this centre who had 2 procedures within the same 30 day time period.
The procedure for this patient has only been counted once in this display with respect to life status for statistical reasons to ensure the patient is not counted as alive or deceased twice over.

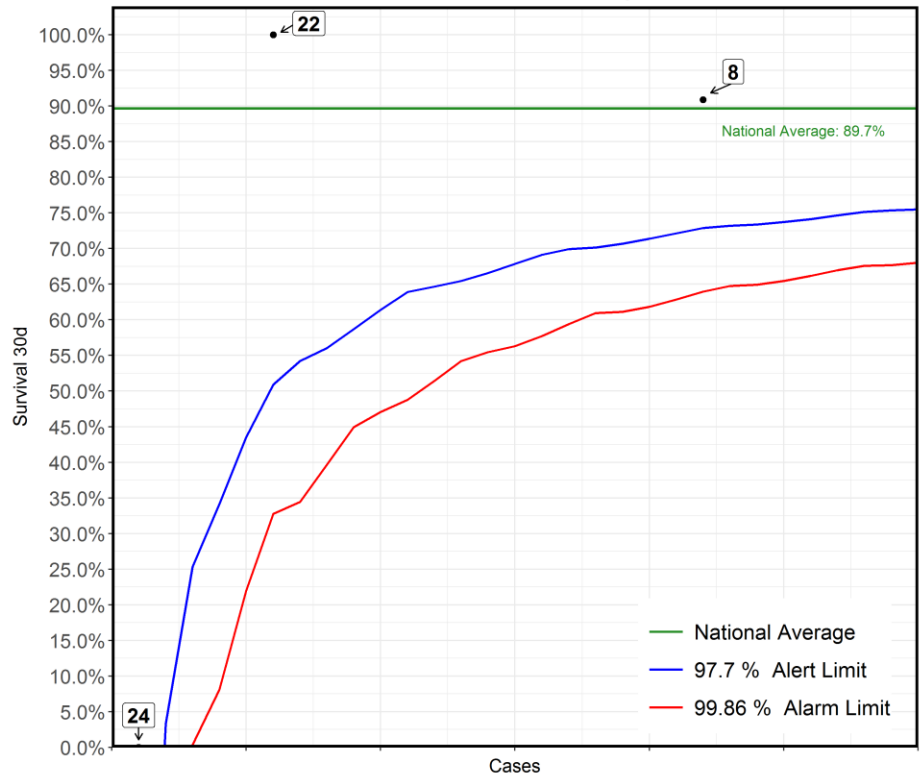
Surgical: Glenn (Cavopulmonary (CP) shunt)
2017-20 - Paediatric cases only



No	Hospital Name	Survival 30d
4	Birmingham Children's Hospital	99%
1	Liverpool Alder Hey Hospital	100%
23	Dublin Our Lady's Children's Hospital	100%
11	London Great Ormond Street Hospital for Children	100%
*17	Leeds General Infirmary	100%
13	London Evelina London Children's Hospital	98%
*6	Bristol Royal Hospital For Children	100%
12	Leicester Glenfield Hospital	93%
22	London Royal Brompton Hospital	96%
*8	Newcastle Freeman Hospital	100%
30	Southampton Wessex Cardiothoracic Centre	100%
26	Glasgow Royal Hospital for Children	100%
15	London Harley Street Clinic	100%

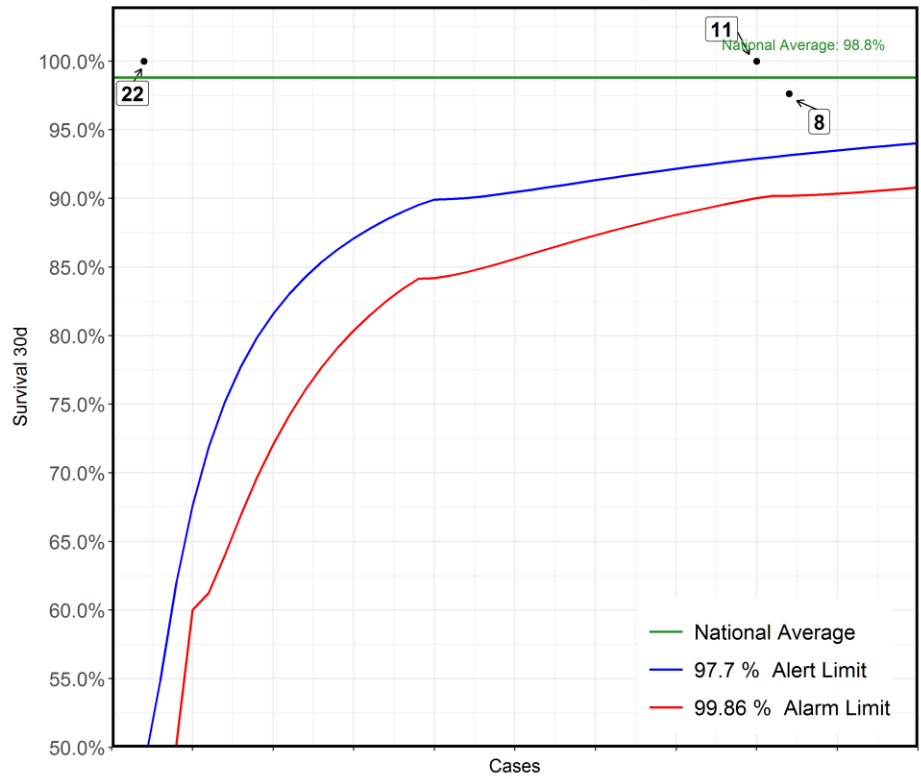
*This Funnel plot includes 1 patient(s) at least from this centre who had 2 procedures within the same 30 day time period.
The procedure for this patient has only been counted once in this display with respect to life status for statistical reasons to ensure the patient is not counted as alive or deceased twice over.

**Surgical: Heart transplant
2017-20 - ACHD cases only**



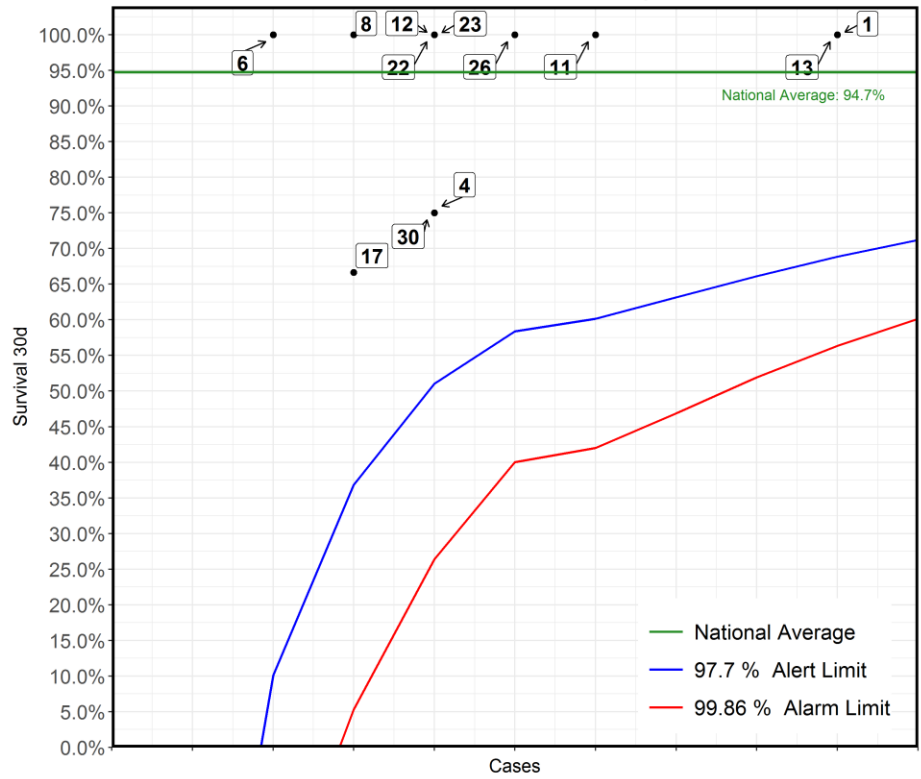
No	Hospital Name	Survival 30d
8	Newcastle Freeman Hospital	91%
22	London Royal Brompton Hospital	100%
24	Birmingham Queen Elizabeth Hospital	0%

**Surgical: Heart transplant
2017-20 - Paediatric cases only**



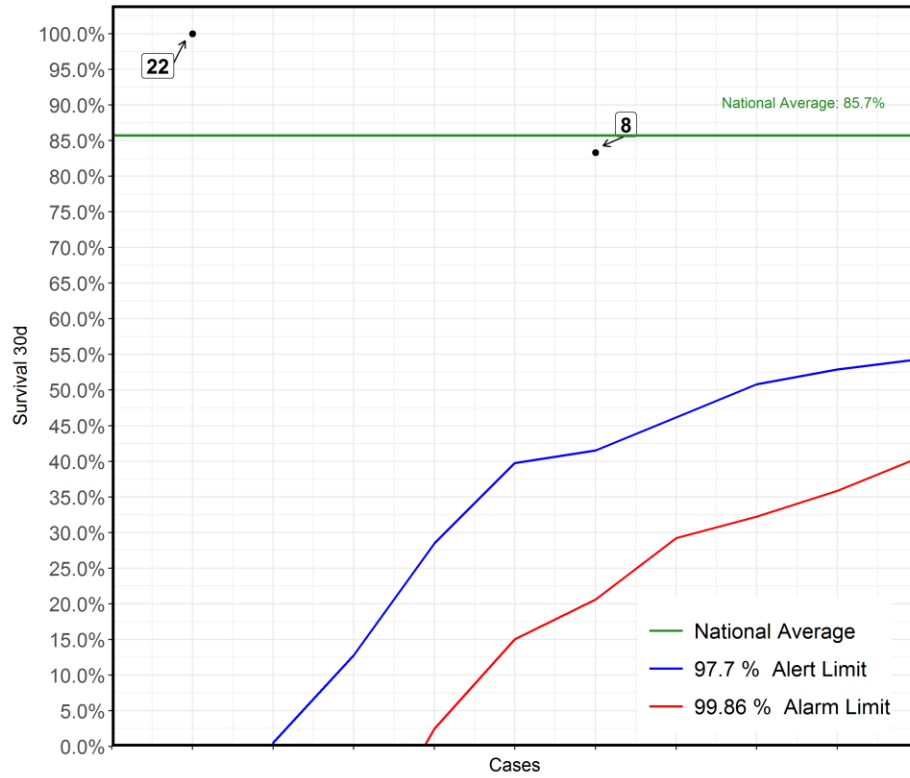
No	Hospital Name	Survival 30d
8	Newcastle Freeman Hospital	98%
11	London Great Ormond Street Hospital for Children	100%
22	London Royal Brompton Hospital	100%

**Surgical: Interrupted aortic arch repair
2017-20 - Paediatric cases only**



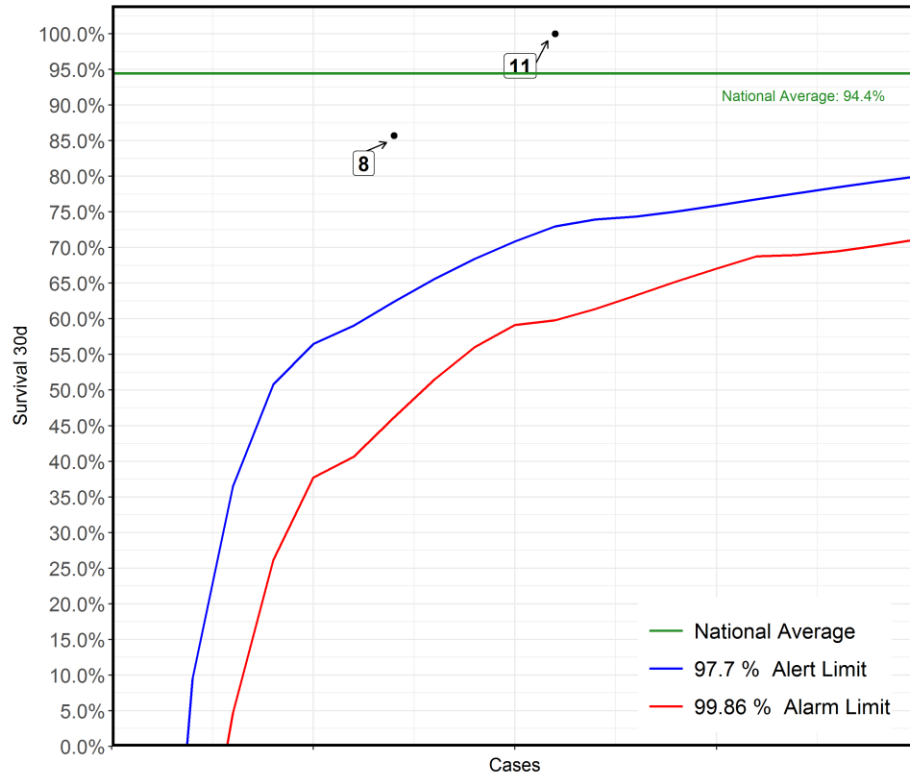
No	Hospital Name	Survival 30d
1	Liverpool Alder Hey Hospital	100%
13	London Evelina London Children's Hospital	100%
11	London Great Ormond Street Hospital for Children	100%
26	Glasgow Royal Hospital for Children	100%
4	Birmingham Children's Hospital	75%
12	Leicester Glenfield Hospital	100%
22	London Royal Brompton Hospital	100%
23	Dublin Our Lady's Children's Hospital	100%
30	Southampton Wessex Cardiothoracic Centre	75%
8	Newcastle Freeman Hospital	100%
17	Leeds General Infirmary	67%
6	Bristol Royal Hospital For Children	100%

**Surgical: Lung transplant (includes heart and lung transplant)
2017-20 - ACHD cases only**



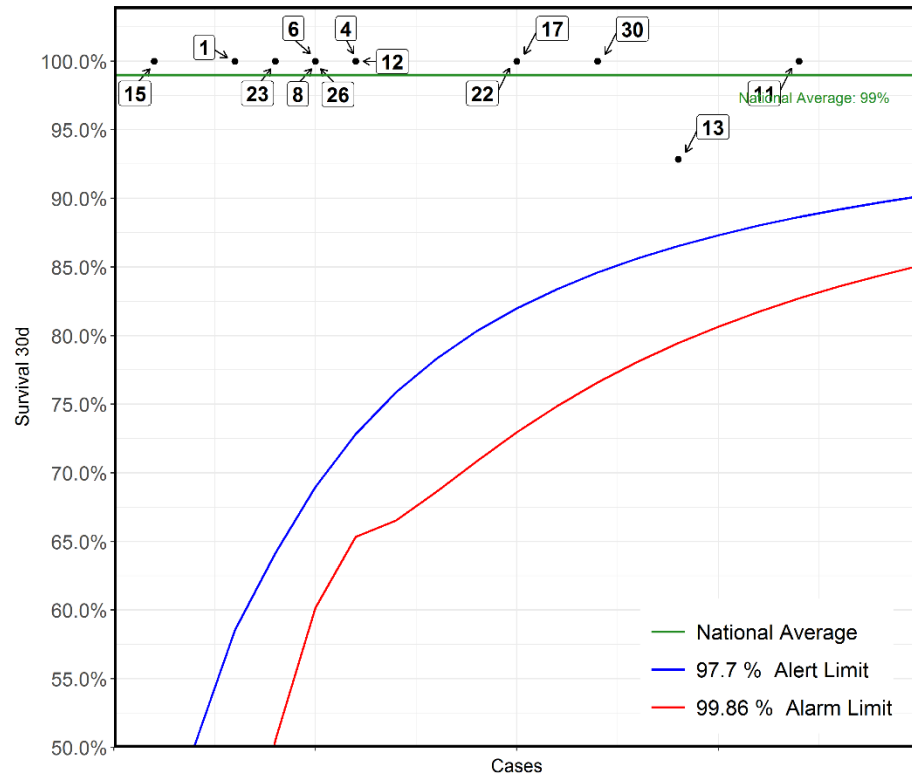
No	Hospital Name	Survival 30d
8	Newcastle Freeman Hospital	83%
22	London Royal Brompton Hospital	100%

**Surgical: Lung transplant (includes heart and lung transplant)
2017-20 - Paediatric cases only**



No	Hospital Name	Survival 30d
11	London Great Ormond Street Hospital for Children	100%
8	Newcastle Freeman Hospital	86%

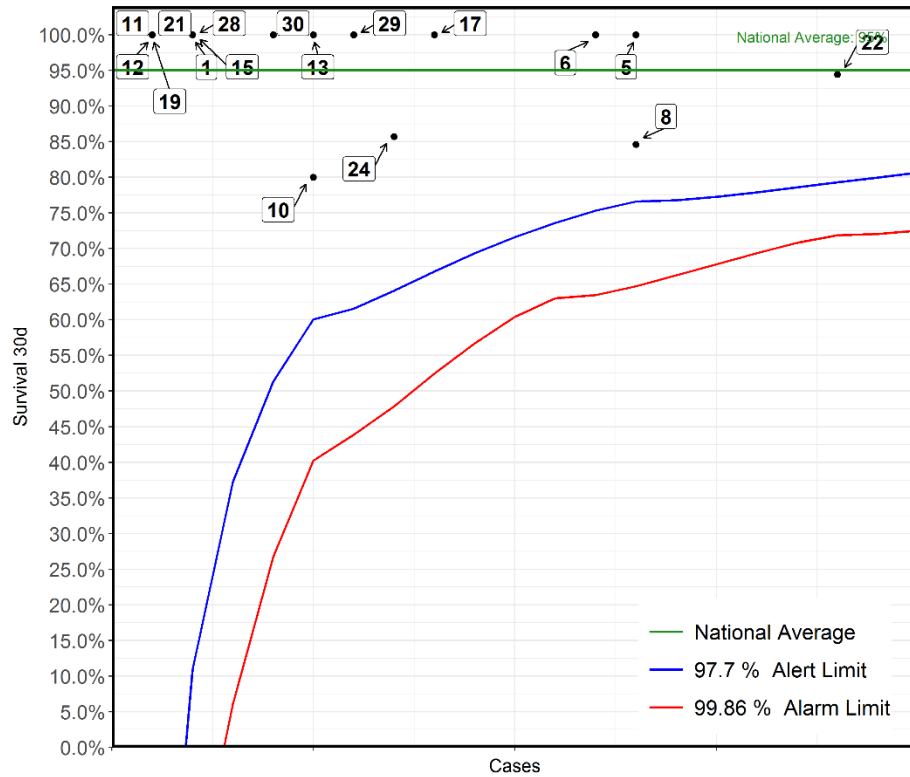
**Surgical: Mitral valve repair
2017-20 - Paediatric cases only**



No	Hospital Name	Survival 30d
11	London Great Ormond Street Hospital for Children	100%
13	London Evelina London Children's Hospital	93%
*30	Southampton Wessex Cardiothoracic Centre	100%
17	Leeds General Infirmary	100%
22	London Royal Brompton Hospital	100%
4	Birmingham Children's Hospital	100%
12	Leicester Glenfield Hospital	100%
*6	Bristol Royal Hospital For Children	100%
8	Newcastle Freeman Hospital	100%
26	Glasgow Royal Hospital for Children	100%
23	Dublin Our Lady's Children's Hospital	100%
1	Liverpool Alder Hey Hospital	100%
15	London Harley Street Clinic	100%

*This Funnel plot includes 1 patient(s) at least from this centre who had 2 procedures within the same 30 day time period. The procedure for this patient has only been counted once in this display with respect to life status for statistical reasons to ensure the patient is not counted as alive or deceased twice over.

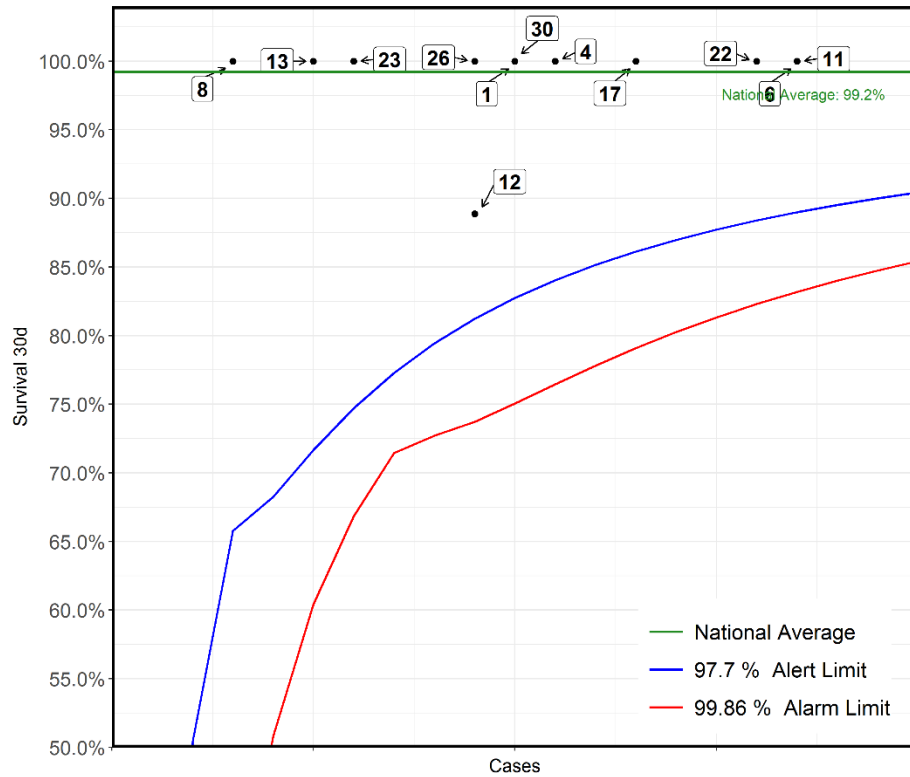
Surgical: Mitral valve replacement
2017-20 - ACHD cases only



No	Hospital Name	Survival 30d
22	London Royal Brompton Hospital	94%
5	Liverpool Heart and Chest Hospital	100%
*8	Newcastle Freeman Hospital	85%
6	Bristol Royal Hospital For Children	100%
17	Leeds General Infirmary	100%
24	Birmingham Queen Elizabeth Hospital	86%
29	London Barts Heart Centre	100%
10	Glasgow Golden Jubilee National Hospital	80%
13	London Evelina London Children's Hospital	100%
30	Southampton Wessex Cardiothoracic Centre	100%
1	Liverpool Alder Hey Hospital	100%
15	London Harley Street Clinic	100%
28	Belfast Royal Victoria Hospital	100%
11	London Great Ormond Street Hospital for Children	100%
12	Leicester Glenfield Hospital	100%
19	Manchester Royal Infirmary	100%
21	Sheffield Northern General Hospital	100%

*This Funnel plot includes 1 patient(s) at least from this centre who had 2 procedures within the same 30 day time period.
The procedure for this patient has only been counted once in this display with respect to life status for statistical reasons to ensure the patient is not counted as alive or deceased twice over.

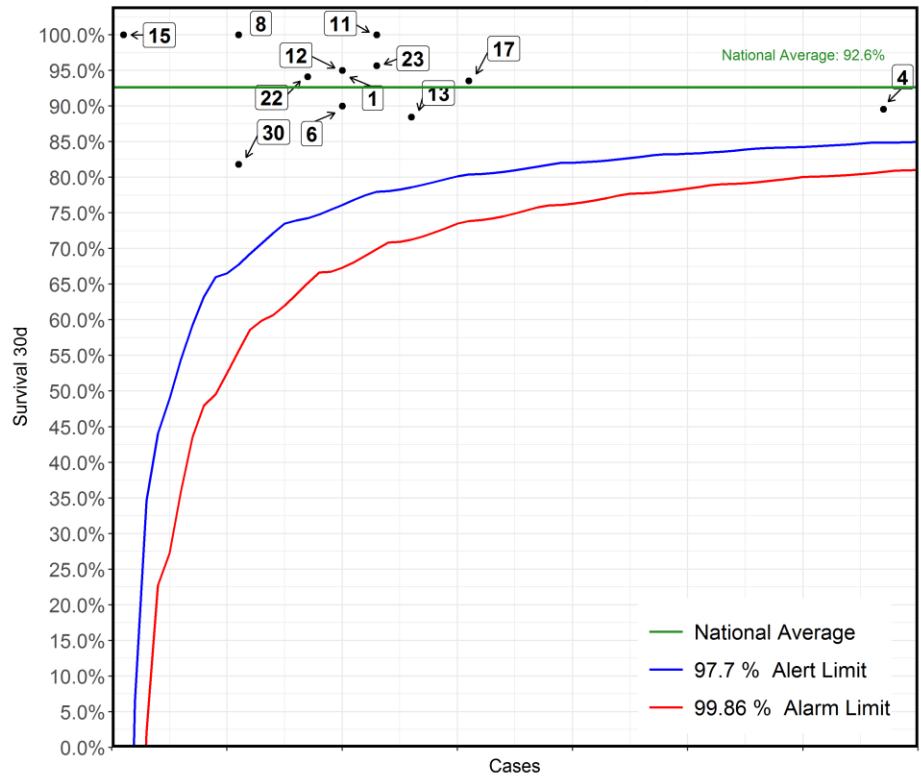
**Surgical: Mitral valve replacement
2017-20 - Paediatric cases only**



No	Hospital Name	Survival 30d
***6	Bristol Royal Hospital For Children	100%
*11	London Great Ormond Street Hospital for Children	100%
22	London Royal Brompton Hospital	100%
*17	Leeds General Infirmary	100%
4	Birmingham Children's Hospital	100%
1	Liverpool Alder Hey Hospital	100%
*30	Southampton Wessex Cardiothoracic Centre	100%
*12	Leicester Glenfield Hospital	89%
26	Glasgow Royal Hospital for Children	100%
23	Dublin Our Lady's Children's Hospital	100%
13	London Evelina London Children's Hospital	100%
8	Newcastle Freeman Hospital	100%

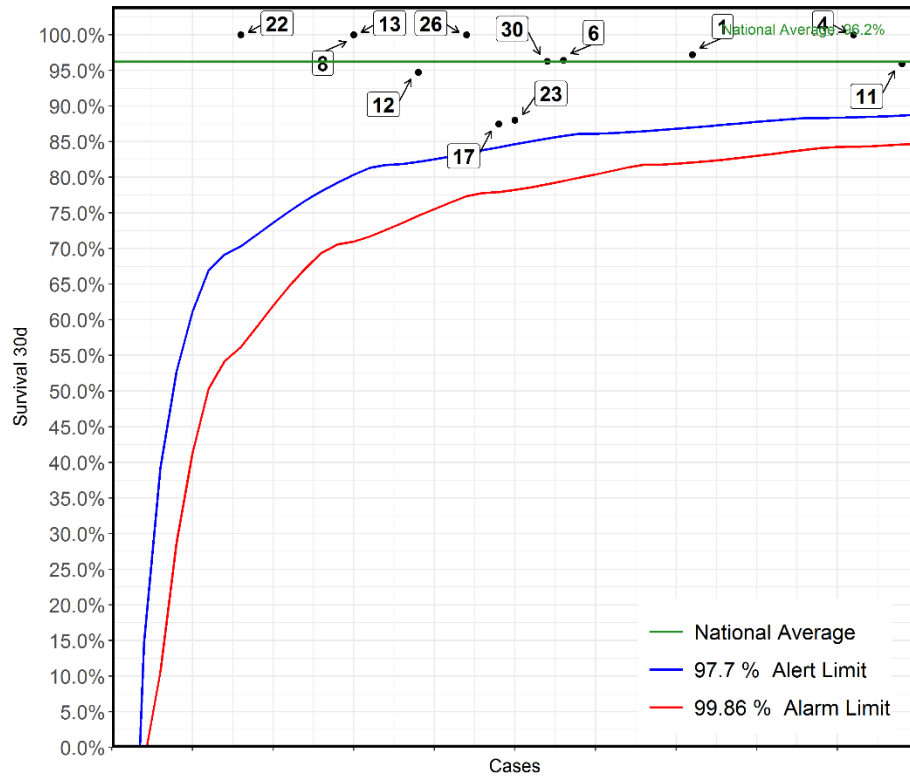
*This Funnel plot includes 1 patient(s) at least from this centre who had 2 procedures within the same 30 day time period.
The procedure for this patient has only been counted once in this display with respect to life status for statistical reasons to ensure the patient is not counted as alive or deceased twice over.

**Surgical: Norwood procedure
2017-20 - Paediatric cases only**



No	Hospital Name	Survival 30d
4	Birmingham Children's Hospital	90%
17	Leeds General Infirmary	94%
13	London Evelina London Children's Hospital	88%
11	London Great Ormond Street Hospital for Children	100%
23	Dublin Our Lady's Children's Hospital	96%
1	Liverpool Alder Hey Hospital	95%
6	Bristol Royal Hospital For Children	90%
12	Leicester Glenfield Hospital	95%
22	London Royal Brompton Hospital	94%
8	Newcastle Freeman Hospital	100%
30	Southampton Wessex Cardiothoracic Centre	82%
15	London Harley Street Clinic	100%

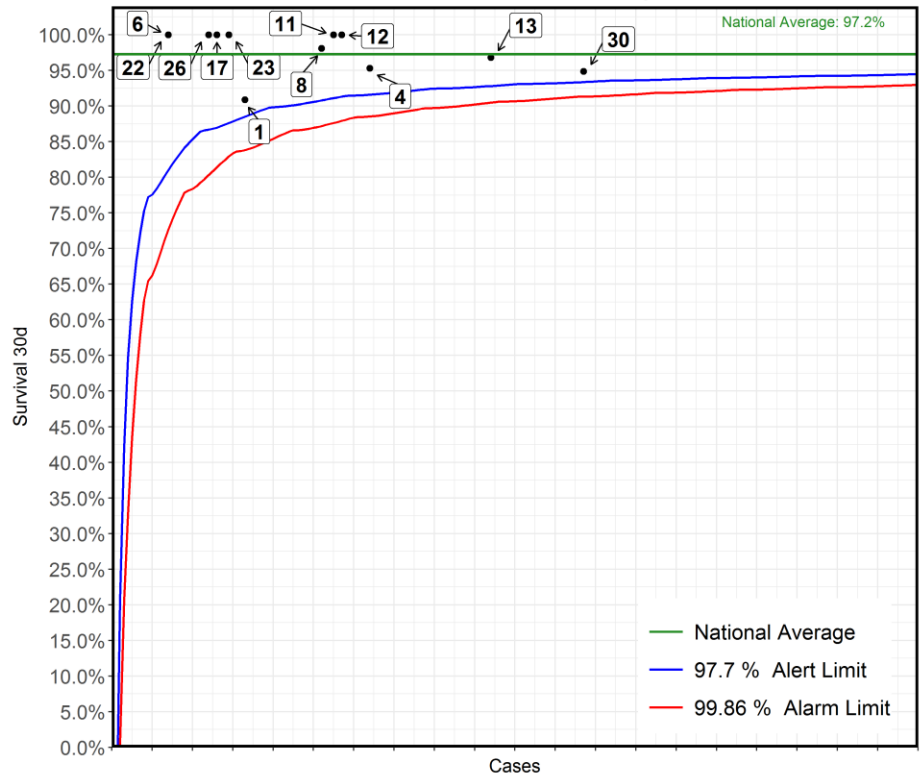
Surgical: Isolated pulmonary trunk band (PA band)
2017-20 - Paediatric cases only



No	Hospital Name	Survival 30d
11	London Great Ormond Street Hospital for Children	96%
4	Birmingham Children's Hospital	100%
*1	Liverpool Alder Hey Hospital	97%
6	Bristol Royal Hospital For Children	96%
30	Southampton Wessex Cardiothoracic Centre	96%
23	Dublin Our Lady's Children's Hospital	88%
17	Leeds General Infirmary	88%
26	Glasgow Royal Hospital for Children	100%
12	Leicester Glenfield Hospital	95%
8	Newcastle Freeman Hospital	100%
13	London Evelina London Children's Hospital	100%
22	London Royal Brompton Hospital	100%

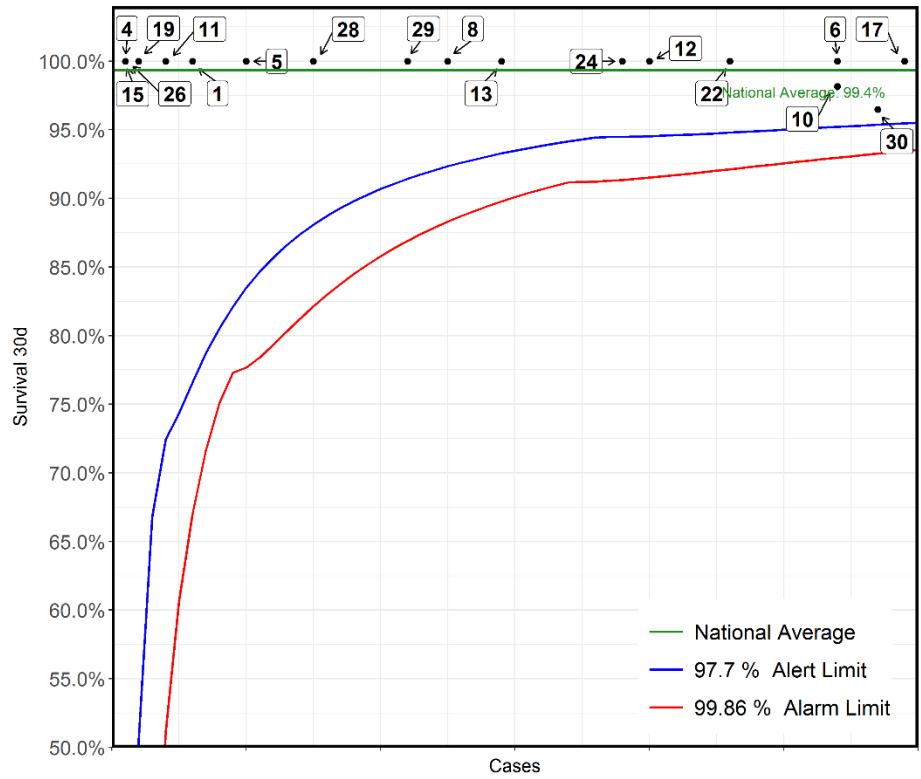
*This Funnel plot includes 1 patient(s) at least from this centre who had 2 procedures within the same 30 day time period.
The procedure for this patient has only been counted once in this display with respect to life status for statistical reasons to ensure the patient is not counted as alive or deceased twice over.

Surgical: Patent arterial duct (PDA) closure - surgical
2017-20 - Paediatric cases only



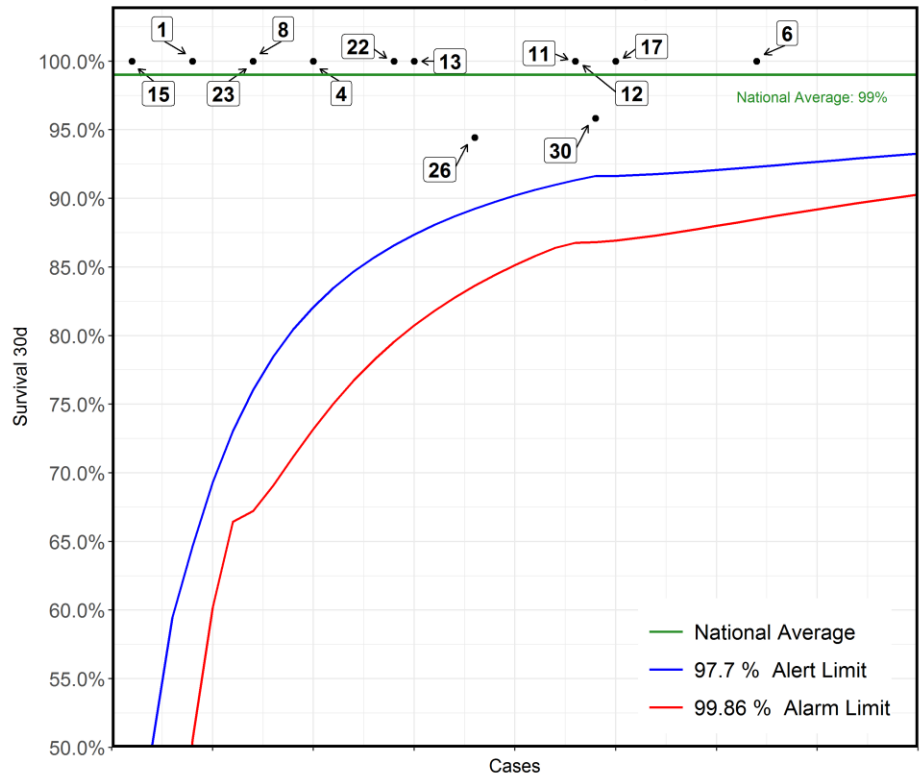
No	Hospital Name	Survival 30d
30	Southampton Wessex Cardiothoracic Centre	95%
13	London Evelina London Children's Hospital	97%
4	Birmingham Children's Hospital	95%
12	Leicester Glenfield Hospital	100%
11	London Great Ormond Street Hospital for Children	100%
8	Newcastle Freeman Hospital	98%
1	Liverpool Alder Hey Hospital	91%
23	Dublin Our Lady's Children's Hospital	100%
17	Leeds General Infirmary	100%
26	Glasgow Royal Hospital for Children	100%
6	Bristol Royal Hospital For Children	100%
22	London Royal Brompton Hospital	100%

**Surgical: Pulmonary valve replacement
2017-20 - ACHD cases only**



No	Hospital Name	Survival 30d
17	Leeds General Infirmary	100%
30	Southampton Wessex Cardiothoracic Centre	96%
6	Bristol Royal Hospital For Children	100%
10	Glasgow Golden Jubilee National Hospital	98%
22	London Royal Brompton Hospital	100%
12	Leicester Glenfield Hospital	100%
24	Birmingham Queen Elizabeth Hospital	100%
13	London Evelina London Children's Hospital	100%
8	Newcastle Freeman Hospital	100%
29	London Barts Heart Centre	100%
28	Belfast Royal Victoria Hospital	100%
5	Liverpool Heart and Chest Hospital	100%
1	Liverpool Alder Hey Hospital	100%
11	London Great Ormond Street Hospital for Children	100%
19	Manchester Royal Infirmary	100%
4	Birmingham Children's Hospital	100%
15	London Harley Street Clinic	100%
26	Glasgow Royal Hospital for Children	100%

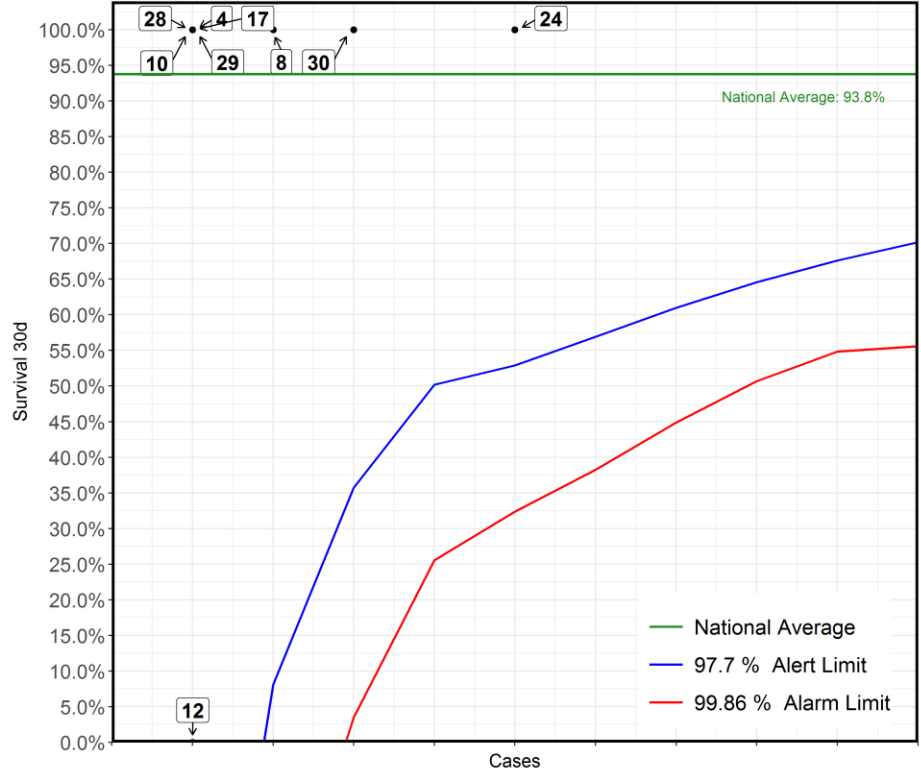
**Surgical: Pulmonary valve replacement
2017-20 - Paediatric cases only**



No	Hospital Name	Survival 30d
*6	Bristol Royal Hospital For Children	100%
17	Leeds General Infirmary	100%
30	Southampton Wessex Cardiothoracic Centre	96%
11	London Great Ormond Street Hospital for Children	100%
*12	Leicester Glenfield Hospital	100%
26	Glasgow Royal Hospital for Children	94%
13	London Evelina London Children's Hospital	100%
22	London Royal Brompton Hospital	100%
4	Birmingham Children's Hospital	100%
8	Newcastle Freeman Hospital	100%
23	Dublin Our Lady's Children's Hospital	100%
1	Liverpool Alder Hey Hospital	100%
15	London Harley Street Clinic	100%

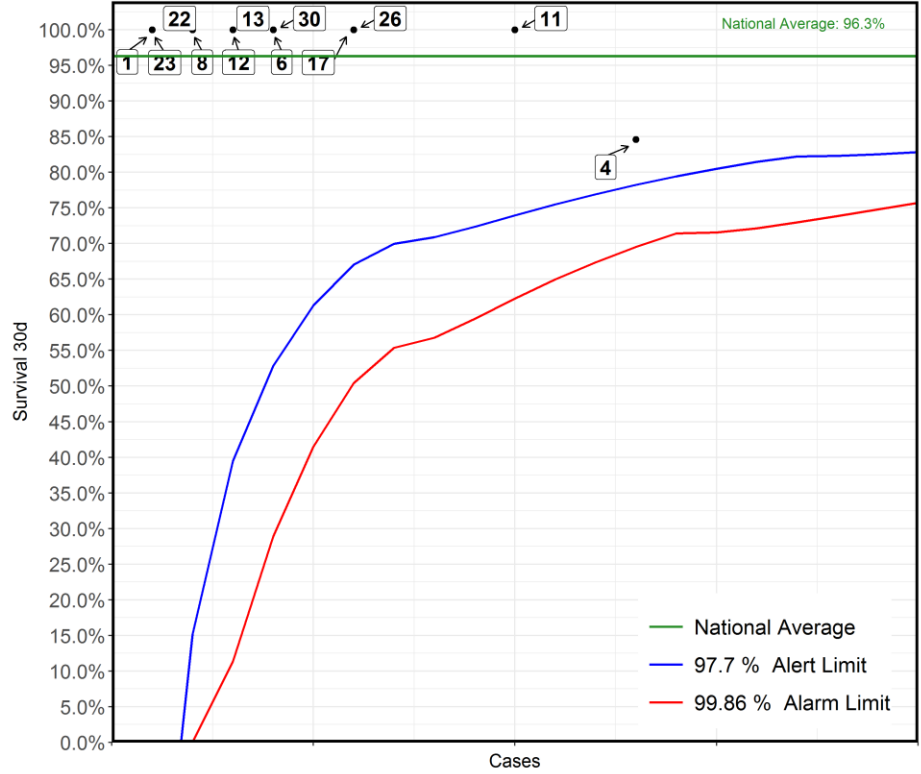
*This Funnel plot includes 1 patient(s) at least from this centre who had 2 procedures within the same 30 day time period. The procedure for this patient has only been counted once in this display with respect to life status for statistical reasons to ensure the patient is not counted as alive or deceased twice over.

**Surgical: Pulmonary vein stenosis repair
2017-20 - ACHD cases only**



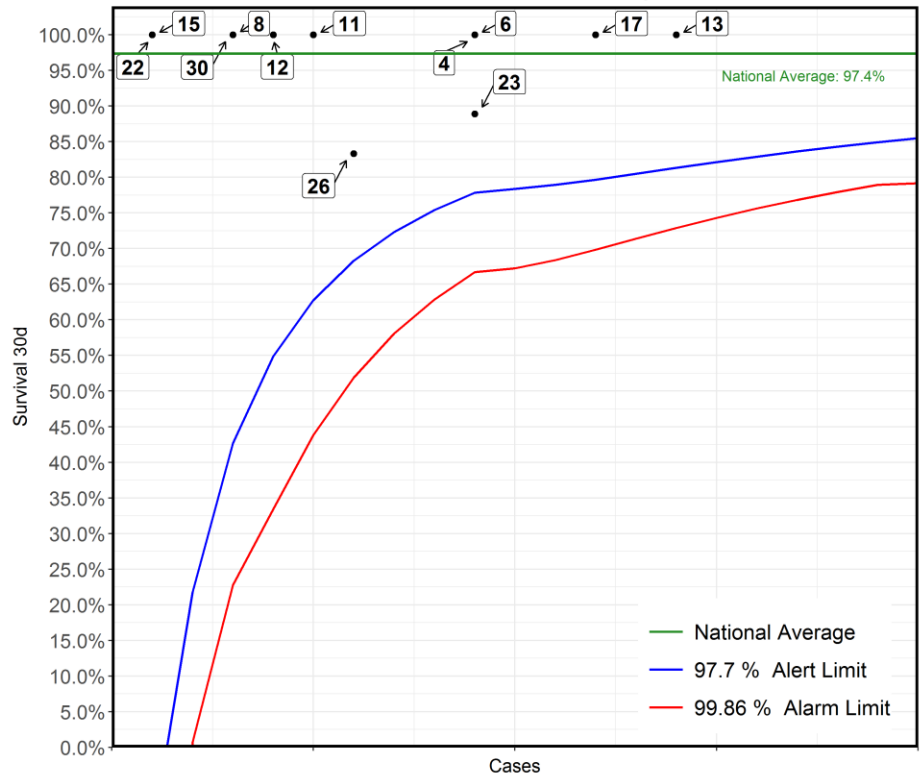
No	Hospital Name	Survival 30d
24	Birmingham Queen Elizabeth Hospital	100%
30	Southampton Wessex Cardiothoracic Centre	100%
8	Newcastle Freeman Hospital	100%
4	Birmingham Children's Hospital	100%
10	Glasgow Golden Jubilee National Hospital	100%
12	Leicester Glenfield Hospital	0%
17	Leeds General Infirmary	100%
28	Belfast Royal Victoria Hospital	100%
29	London Barts Heart Centre	100%

**Surgical: Pulmonary vein stenosis repair
2017-20 - Paediatric cases only**



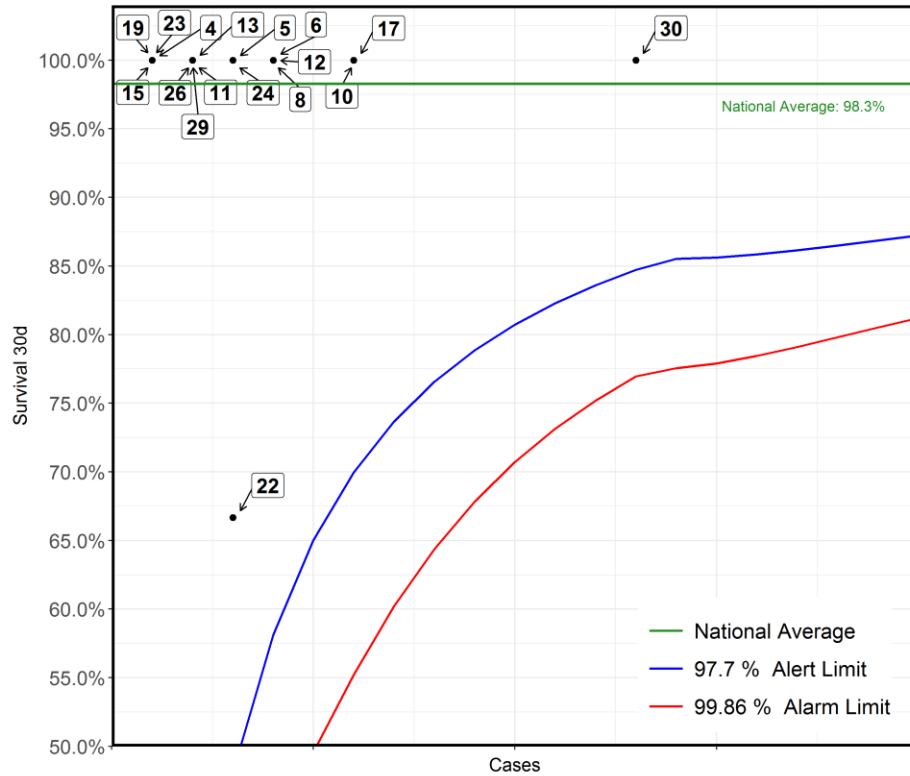
No	Hospital Name	Survival 30d
4	Birmingham Children's Hospital	85%
11	London Great Ormond Street Hospital for Children	100%
17	Leeds General Infirmary	100%
26	Glasgow Royal Hospital for Children	100%
6	Bristol Royal Hospital For Children	100%
30	Southampton Wessex Cardiothoracic Centre	100%
12	Leicester Glenfield Hospital	100%
13	London Evelina London Children's Hospital	100%
8	Newcastle Freeman Hospital	100%
1	Liverpool Alder Hey Hospital	100%
22	London Royal Brompton Hospital	100%
23	Dublin Our Lady's Children's Hospital	100%

**Surgical: Ross-Konno procedure
2017-20 - Paediatric cases only**



No	Hospital Name	Survival 30d
13	London Evelina London Children's Hospital	100%
17	Leeds General Infirmary	100%
4	Birmingham Children's Hospital	100%
6	Bristol Royal Hospital For Children	100%
23	Dublin Our Lady's Children's Hospital	89%
26	Glasgow Royal Hospital for Children	83%
11	London Great Ormond Street Hospital for Children	100%
12	Leicester Glenfield Hospital	100%
8	Newcastle Freeman Hospital	100%
30	Southampton Wessex Cardiothoracic Centre	100%
15	London Harley Street Clinic	100%
22	London Royal Brompton Hospital	100%

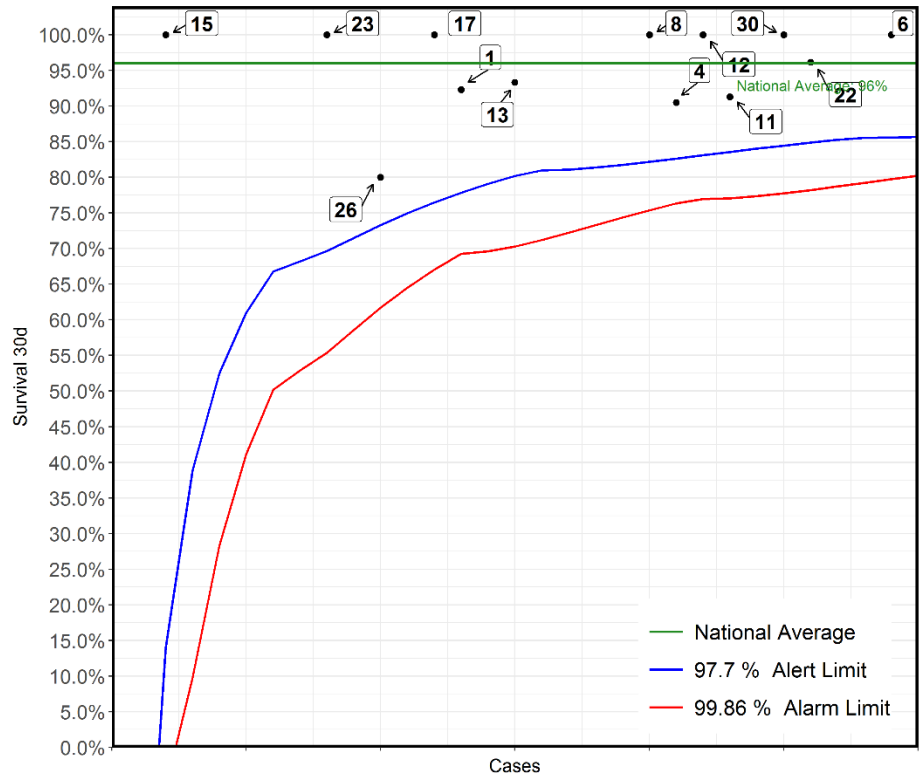
**Surgical: Right ventricle to pulmonary artery conduit construction
2017-20 - ACHD cases only**



No	Hospital Name	Survival 30d
30	Southampton Wessex Cardiothoracic Centre	100%
10	Glasgow Golden Jubilee National Hospital	100%
*17	Leeds General Infirmary	100%
6	Bristol Royal Hospital For Children	100%
8	Newcastle Freeman Hospital	100%
12	Leicester Glenfield Hospital	100%
5	Liverpool Heart and Chest Hospital	100%
22	London Royal Brompton Hospital	67%
24	Birmingham Queen Elizabeth Hospital	100%
11	London Great Ormond Street Hospital for Children	100%
13	London Evelina London Children's Hospital	100%
26	Glasgow Royal Hospital for Children	100%
29	London Barts Heart Centre	100%
4	Birmingham Children's Hospital	100%
15	London Harley Street Clinic	100%
19	Manchester Royal Infirmary	100%
23	Dublin Our Lady's Children's Hospital	100%

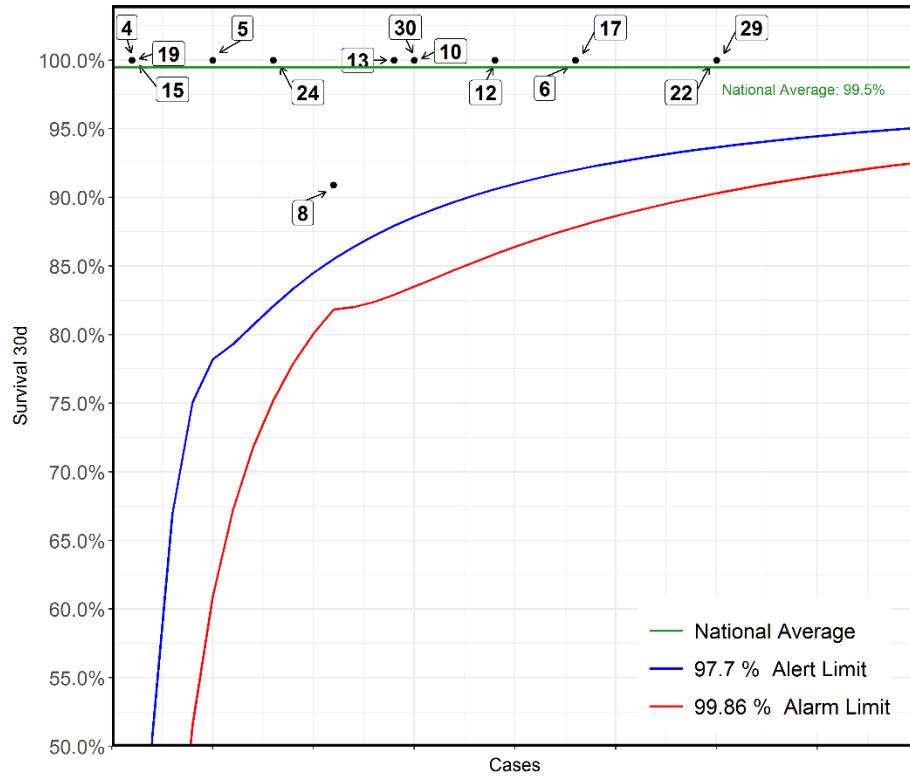
*This Funnel plot includes 1 patient(s) at least from this centre who had 2 procedures within the same 30 day time period.
The procedure for this patient has only been counted once in this display with respect to life status for statistical reasons to ensure the patient is not counted as alive or deceased twice over.

**Surgical: Right ventricle to pulmonary artery conduit construction
2017-20 - Paediatric cases only**



No	Hospital Name	Survival 30d
6	Bristol Royal Hospital For Children	100%
22	London Royal Brompton Hospital	96%
30	Southampton Wessex Cardiothoracic Centre	100%
11	London Great Ormond Street Hospital for Children	91%
12	Leicester Glenfield Hospital	100%
4	Birmingham Children's Hospital	90%
8	Newcastle Freeman Hospital	100%
13	London Evelina London Children's Hospital	93%
1	Liverpool Alder Hey Hospital	92%
17	Leeds General Infirmary	100%
26	Glasgow Royal Hospital for Children	80%
23	Dublin Our Lady's Children's Hospital	100%
15	London Harley Street Clinic	100%

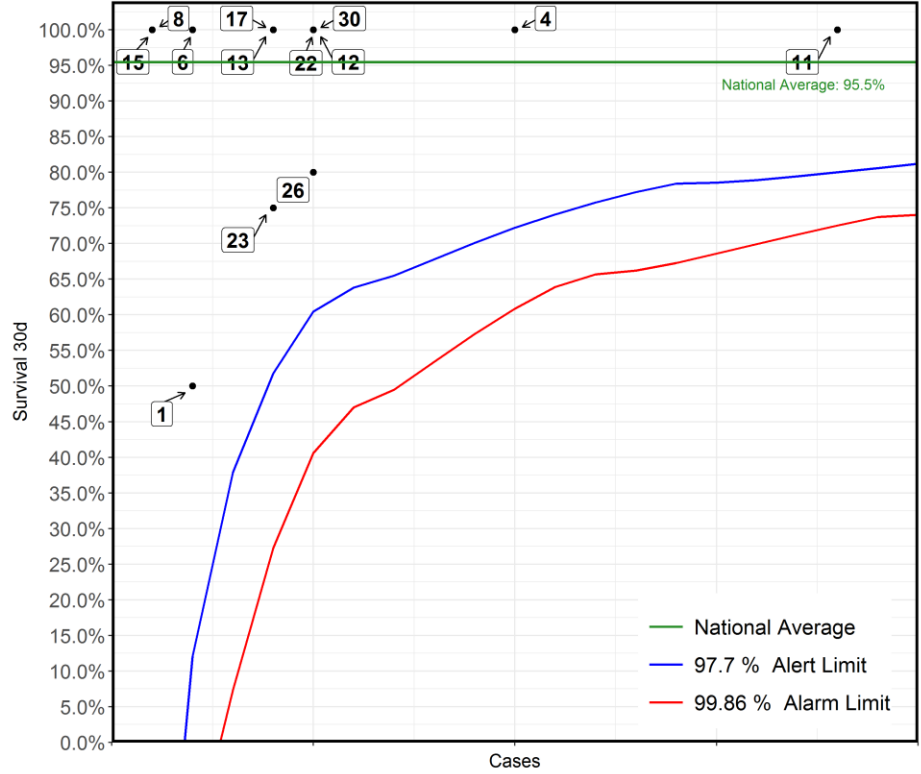
I: Sinus venosus atrial septal defect (ASD) closure and partially anomalous pulmonary venous connection (PAPVC) repair
2017-20 - ACHD cases only



No	Hospital Name	Survival 30d
*22	London Royal Brompton Hospital	100%
29	London Barts Heart Centre	100%
6	Bristol Royal Hospital For Children	100%
17	Leeds General Infirmary	100%
12	Leicester Glenfield Hospital	100%
10	Glasgow Golden Jubilee National Hospital	100%
30	Southampton Wessex Cardiothoracic Centre	100%
13	London Evelina London Children's Hospital	100%
8	Newcastle Freeman Hospital	91%
24	Birmingham Queen Elizabeth Hospital	100%
5	Liverpool Heart and Chest Hospital	100%
4	Birmingham Children's Hospital	100%
15	London Harley Street Clinic	100%
19	Manchester Royal Infirmary	100%

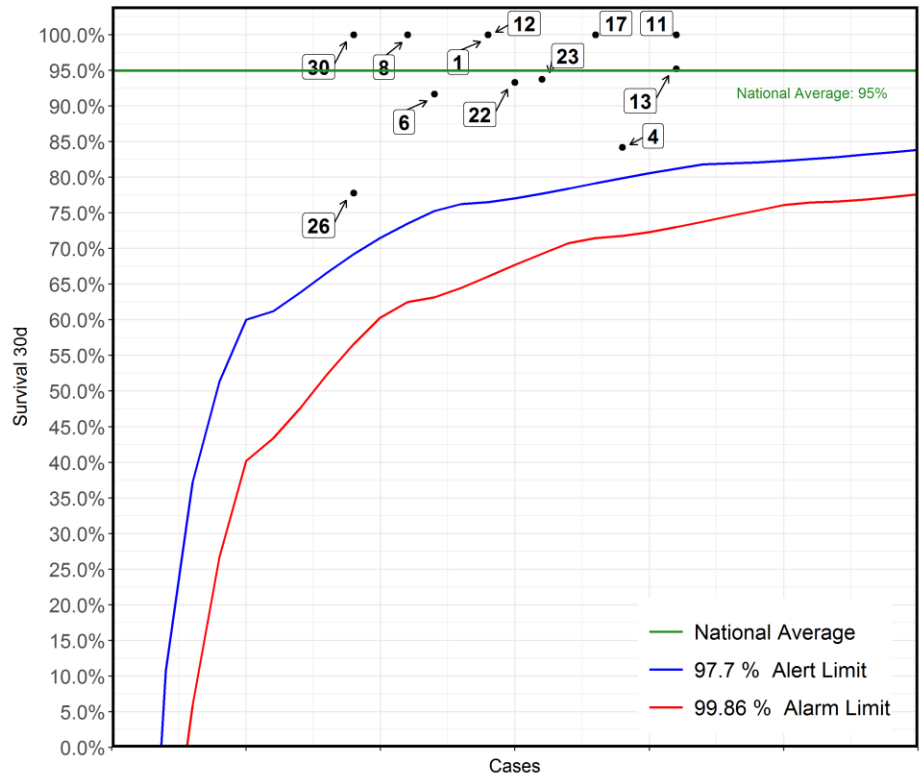
*This Funnel plot includes 1 patient(s) at least from this centre who had 2 procedures within the same 30 day time period. The procedure for this patient has only been counted once in this display with respect to life status for statistical reasons to ensure the patient is not counted as alive or deceased twice over.

**Surgical: Supravalvar aortic stenosis repair
2017-20 - Paediatric cases only**



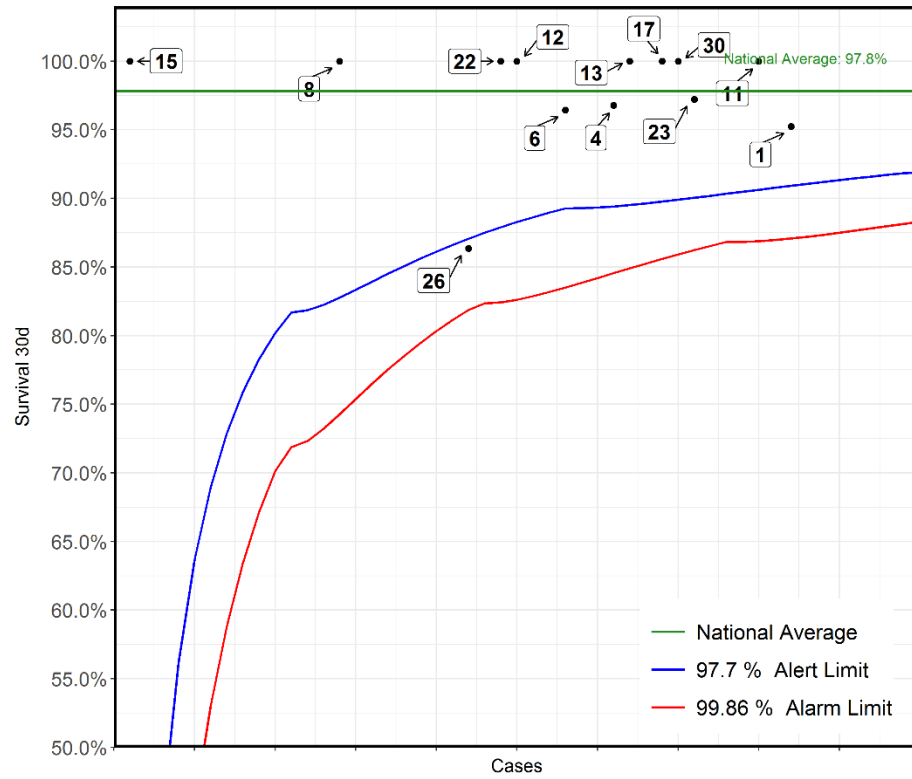
No	Hospital Name	Survival 30d
11	London Great Ormond Street Hospital for Children	100%
4	Birmingham Children's Hospital	100%
12	Leicester Glenfield Hospital	100%
22	London Royal Brompton Hospital	100%
26	Glasgow Royal Hospital for Children	80%
30	Southampton Wessex Cardiothoracic Centre	100%
13	London Evelina London Children's Hospital	100%
17	Leeds General Infirmary	100%
23	Dublin Our Lady's Children's Hospital	75%
1	Liverpool Alder Hey Hospital	50%
6	Bristol Royal Hospital For Children	100%
8	Newcastle Freeman Hospital	100%
15	London Harley Street Clinic	100%

**Surgical: Totally anomalous pulmonary venous connection (TAPVC) repair
2017-20 - Paediatric cases only**



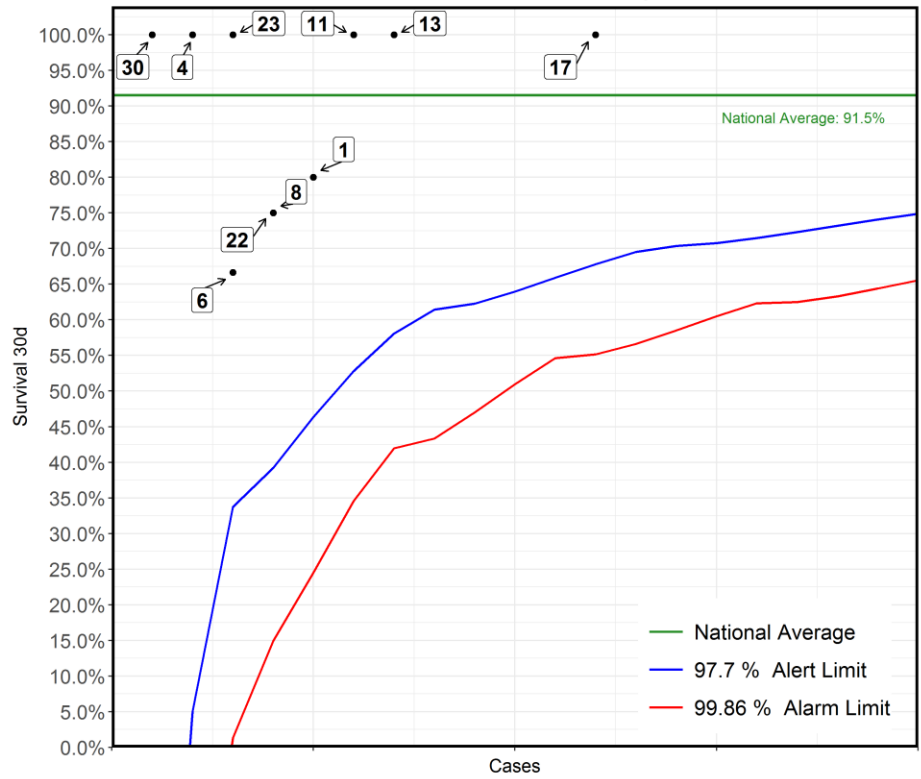
No	Hospital Name	Survival 30d
11	London Great Ormond Street Hospital for Children	100%
13	London Evelina London Children's Hospital	95%
4	Birmingham Children's Hospital	84%
17	Leeds General Infirmary	100%
23	Dublin Our Lady's Children's Hospital	94%
22	London Royal Brompton Hospital	93%
1	Liverpool Alder Hey Hospital	100%
12	Leicester Glenfield Hospital	100%
6	Bristol Royal Hospital For Children	92%
8	Newcastle Freeman Hospital	100%
26	Glasgow Royal Hospital for Children	78%
30	Southampton Wessex Cardiothoracic Centre	100%

Surgical: Arterial switch procedure
2017-20 - Paediatric cases only



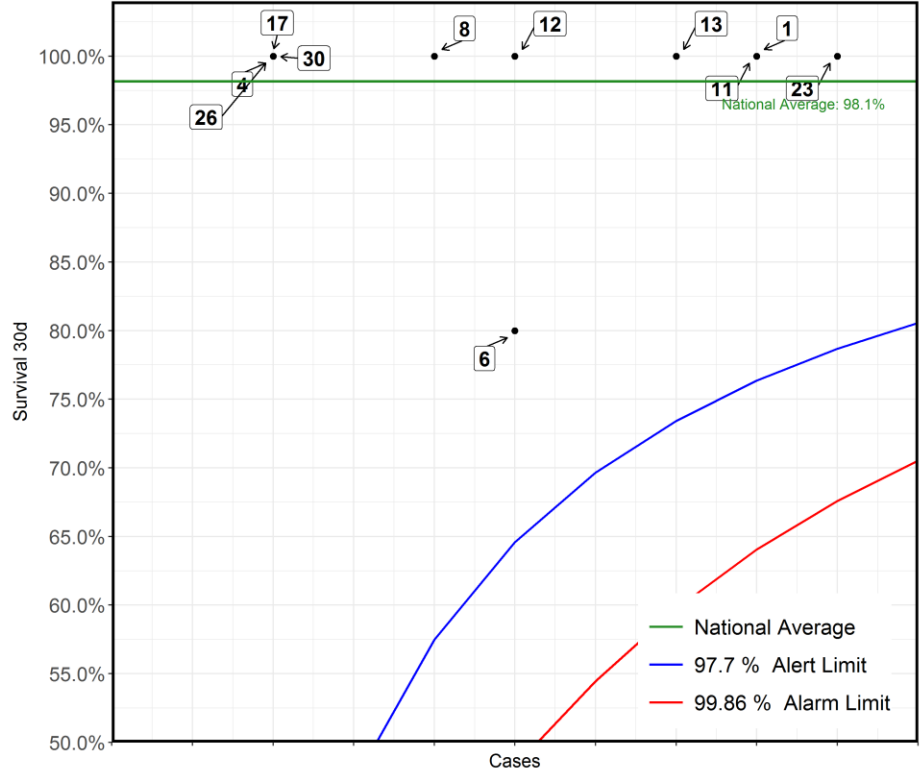
No	Hospital Name	Survival 30d
1	Liverpool Alder Hey Hospital	95%
11	London Great Ormond Street Hospital for Children	100%
23	Dublin Our Lady's Children's Hospital	97%
30	Southampton Wessex Cardiothoracic Centre	100%
17	Leeds General Infirmary	100%
13	London Evelina London Children's Hospital	100%
4	Birmingham Children's Hospital	97%
6	Bristol Royal Hospital For Children	96%
12	Leicester Glenfield Hospital	100%
22	London Royal Brompton Hospital	100%
26	Glasgow Royal Hospital for Children	86%
8	Newcastle Freeman Hospital	100%
15	London Harley Street Clinic	100%

Surgical: Arterial switch and aorta arch repair
2017-20 - Paediatric cases only



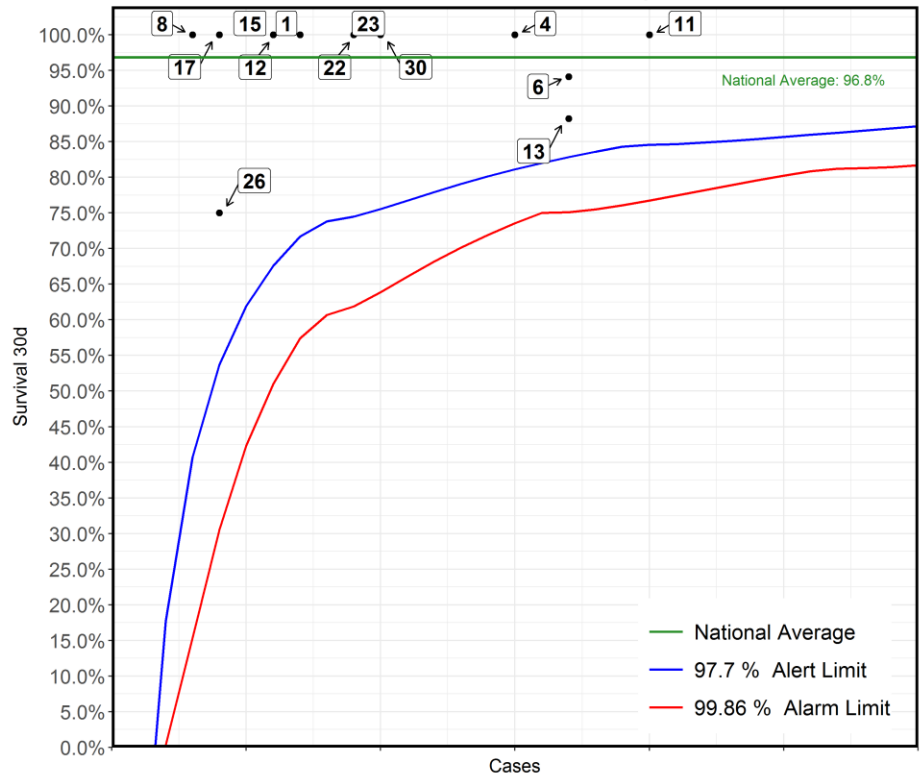
No	Hospital Name	Survival 30d
17	Leeds General Infirmary	100%
13	London Evelina London Children's Hospital	100%
11	London Great Ormond Street Hospital for Children	100%
1	Liverpool Alder Hey Hospital	80%
8	Newcastle Freeman Hospital	75%
22	London Royal Brompton Hospital	75%
6	Bristol Royal Hospital For Children	67%
23	Dublin Our Lady's Children's Hospital	100%
4	Birmingham Children's Hospital	100%
30	Southampton Wessex Cardiothoracic Centre	100%

**Surgical: Complex procedure for transposed great arteries
2017-20 - Paediatric cases only**

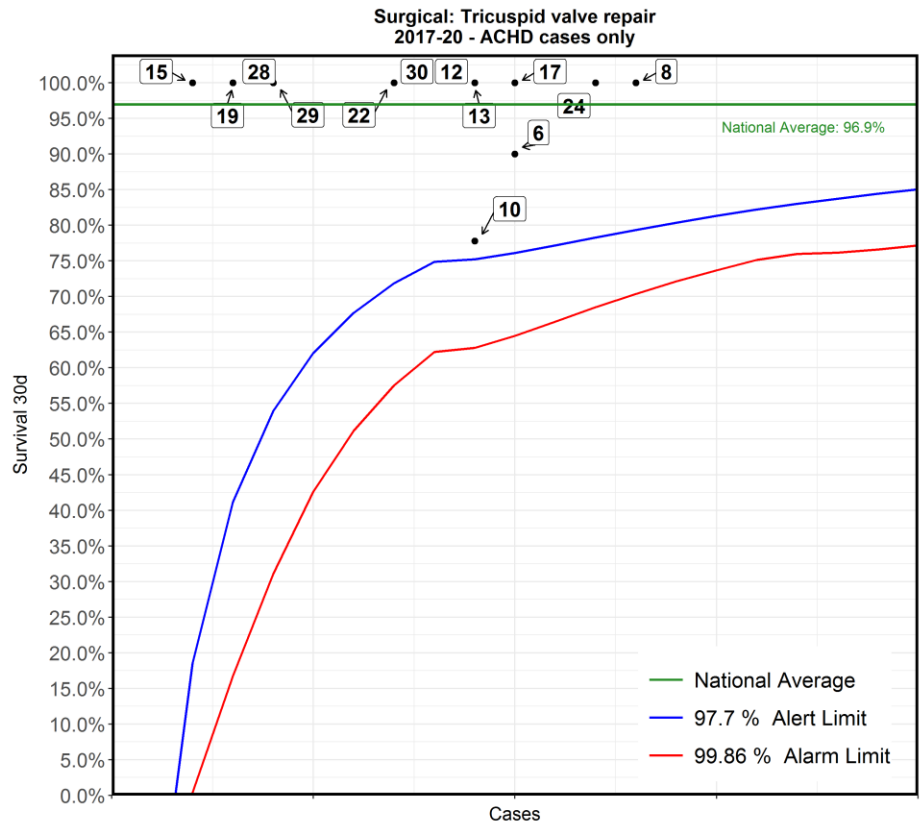


No	Hospital Name	Survival 30d
23	Dublin Our Lady's Children's Hospital	100%
1	Liverpool Alder Hey Hospital	100%
11	London Great Ormond Street Hospital for Children	100%
13	London Evelina London Children's Hospital	100%
6	Bristol Royal Hospital For Children	80%
12	Leicester Glenfield Hospital	100%
8	Newcastle Freeman Hospital	100%
4	Birmingham Children's Hospital	100%
17	Leeds General Infirmary	100%
26	Glasgow Royal Hospital for Children	100%
30	Southampton Wessex Cardiothoracic Centre	100%

Surgical: Arterial switch and ventricular septal defect (VSD) repair
2017-20 - Paediatric cases only



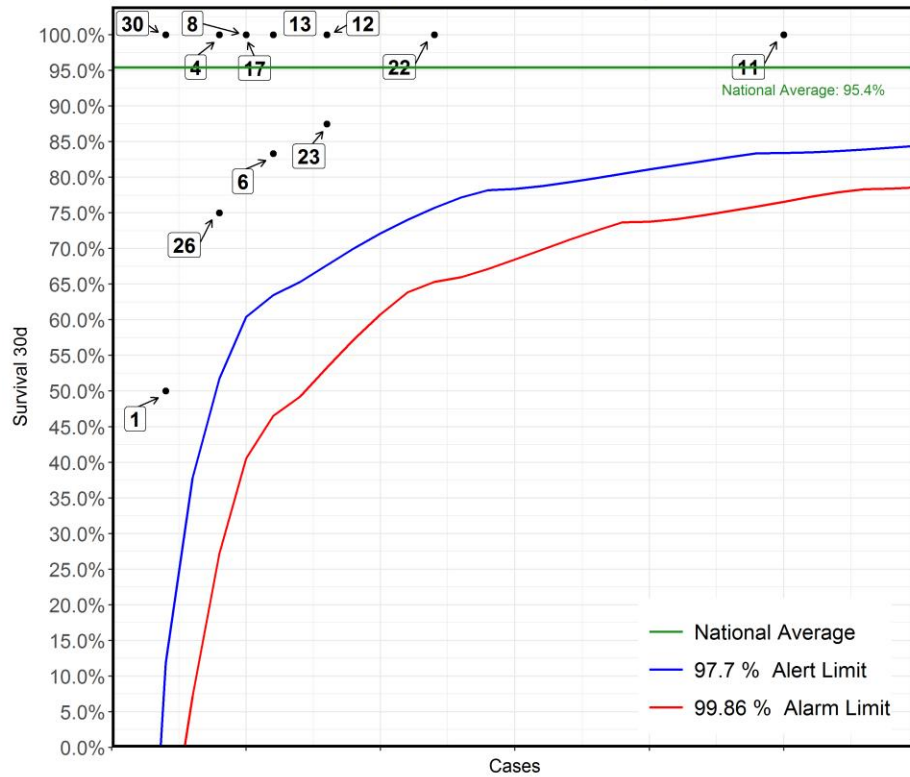
No	Hospital Name	Survival 30d
11	London Great Ormond Street Hospital for Children	100%
6	Bristol Royal Hospital For Children	94%
13	London Evelina London Children's Hospital	88%
4	Birmingham Children's Hospital	100%
30	Southampton Wessex Cardiothoracic Centre	100%
22	London Royal Brompton Hospital	100%
23	Dublin Our Lady's Children's Hospital	100%
1	Liverpool Alder Hey Hospital	100%
12	Leicester Glenfield Hospital	100%
15	London Harley Street Clinic	100%
17	Leeds General Infirmary	100%
26	Glasgow Royal Hospital for Children	75%
8	Newcastle Freeman Hospital	100%



No	Hospital Name	Survival 30d
8	Newcastle Freeman Hospital	100%
24	Birmingham Queen Elizabeth Hospital	100%
6	Bristol Royal Hospital For Children	90%
*17	Leeds General Infirmary	100%
10	Glasgow Golden Jubilee National Hospital	78%
12	Leicester Glenfield Hospital	100%
13	London Evelina London Children's Hospital	100%
22	London Royal Brompton Hospital	100%
30	Southampton Wessex Cardiothoracic Centre	100%
29	London Barts Heart Centre	100%
19	Manchester Royal Infirmary	100%
28	Belfast Royal Victoria Hospital	100%
15	London Harley Street Clinic	100%

*This Funnel plot includes 1 patient(s) at least from this centre who had 2 procedures within the same 30 day time period. The procedure for this patient has only been counted once in this display with respect to life status for statistical reasons to ensure the patient is not counted as alive or deceased twice over.

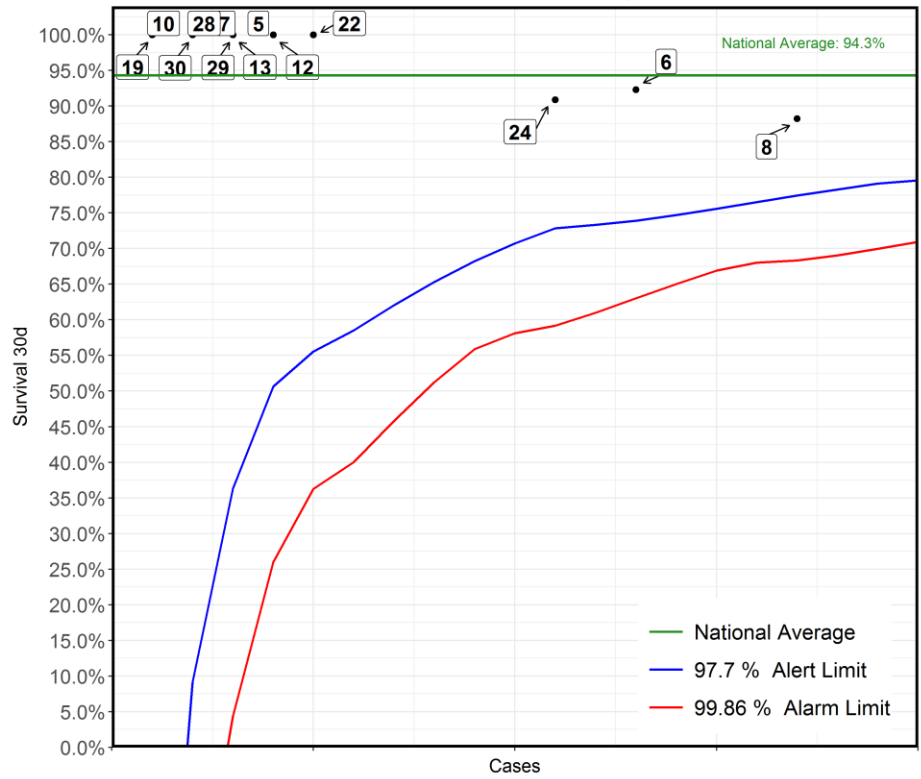
**Surgical: Tricuspid valve repair
2017-20 - Paediatric cases only**



No	Hospital Name	Survival 30d
11	London Great Ormond Street Hospital for Children	100%
22	London Royal Brompton Hospital	100%
12	Leicester Glenfield Hospital	100%
23	Dublin Our Lady's Children's Hospital	88%
6	Bristol Royal Hospital For Children	83%
13	London Evelina London Children's Hospital	100%
*8	Newcastle Freeman Hospital	100%
17	Leeds General Infirmary	100%
*4	Birmingham Children's Hospital	100%
26	Glasgow Royal Hospital for Children	75%
1	Liverpool Alder Hey Hospital	50%
30	Southampton Wessex Cardiothoracic Centre	100%

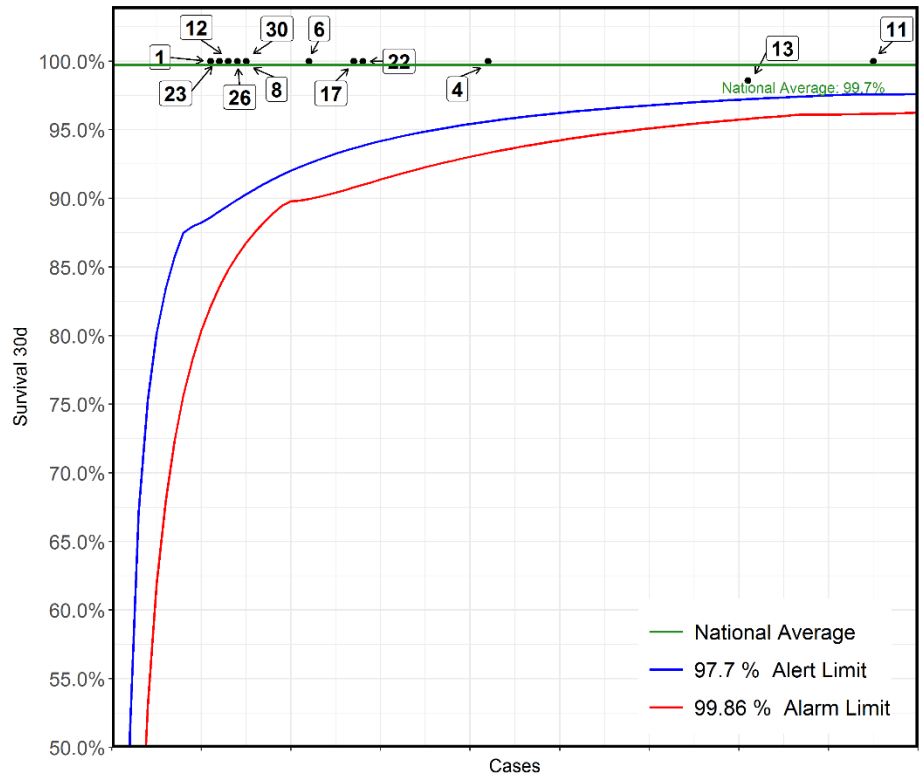
*This Funnel plot includes 1 patient(s) at least from this centre who had 2 procedures within the same 30 day time period.
The procedure for this patient has only been counted once in this display with respect to life status for statistical reasons to ensure the patient is not counted as alive or deceased twice over.

Surgical: Tricuspid valve replacement
2017-20 - ACHD cases only



No	Hospital Name	Survival 30d
8	Newcastle Freeman Hospital	88%
6	Bristol Royal Hospital For Children	92%
24	Birmingham Queen Elizabeth Hospital	91%
22	London Royal Brompton Hospital	100%
5	Liverpool Heart and Chest Hospital	100%
12	Leicester Glenfield Hospital	100%
13	London Evelina London Children's Hospital	100%
17	Leeds General Infirmary	100%
29	London Barts Heart Centre	100%
10	Glasgow Golden Jubilee National Hospital	100%
28	Belfast Royal Victoria Hospital	100%
30	Southampton Wessex Cardiothoracic Centre	100%
19	Manchester Royal Infirmary	100%

**Surgical: Vascular ring repair
2017-20 - Paediatric cases only**



No	Hospital Name	Survival 30d
**11	London Great Ormond Street Hospital for Children	100%
*13	London Evelina London Children's Hospital	99%
4	Birmingham Children's Hospital	100%
22	London Royal Brompton Hospital	100%
17	Leeds General Infirmary	100%
6	Bristol Royal Hospital For Children	100%
8	Newcastle Freeman Hospital	100%
30	Southampton Wessex Cardiothoracic Centre	100%
26	Glasgow Royal Hospital for Children	100%
12	Leicester Glenfield Hospital	100%
23	Dublin Our Lady's Children's Hospital	100%
1	Liverpool Alder Hey Hospital	100%

*This Funnel plot includes 1 patient(s) at least from this centre who had 2 procedures within the same 30 day time period. The procedure for this patient has only been counted once in this display with respect to life status for statistical reasons to ensure the patient is not counted as alive or deceased twice over.