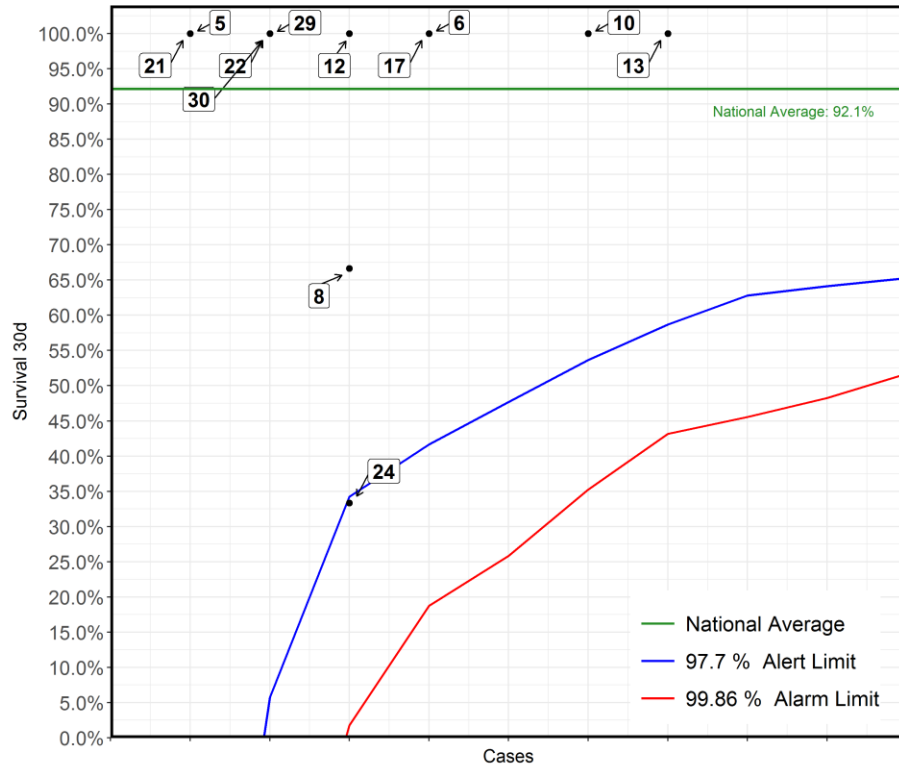
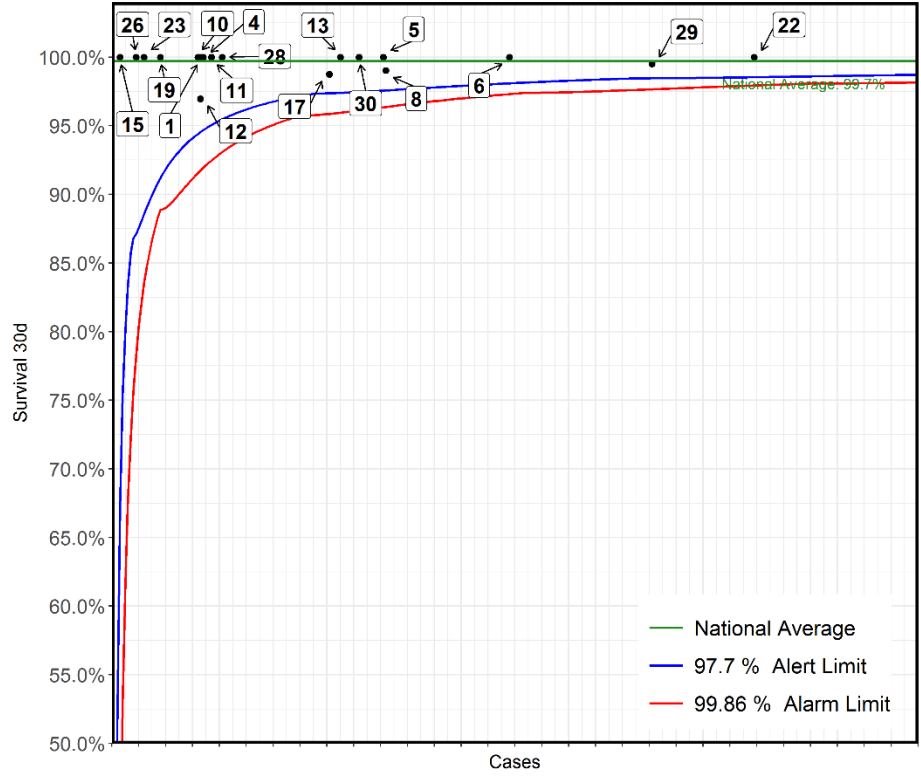


**Electrophysiology: Isolated surgical procedures for arrhythmia (including ablation and Maze procedures)  
2017-20 - ACHD cases only**



No	Hospital Name	Survival 30d
13	London Evelina London Children's Hospital	100%
10	Glasgow Golden Jubilee National Hospital	100%
6	Bristol Royal Hospital For Children	100%
17	Leeds General Infirmary	100%
8	Newcastle Freeman Hospital	67%
12	Leicester Glenfield Hospital	100%
24	Birmingham Queen Elizabeth Hospital	33%
22	London Royal Brompton Hospital	100%
29	London Barts Heart Centre	100%
30	Southampton Wessex Cardiothoracic Centre	100%
5	Liverpool Heart and Chest Hospital	100%
21	Sheffield Northern General Hospital	100%

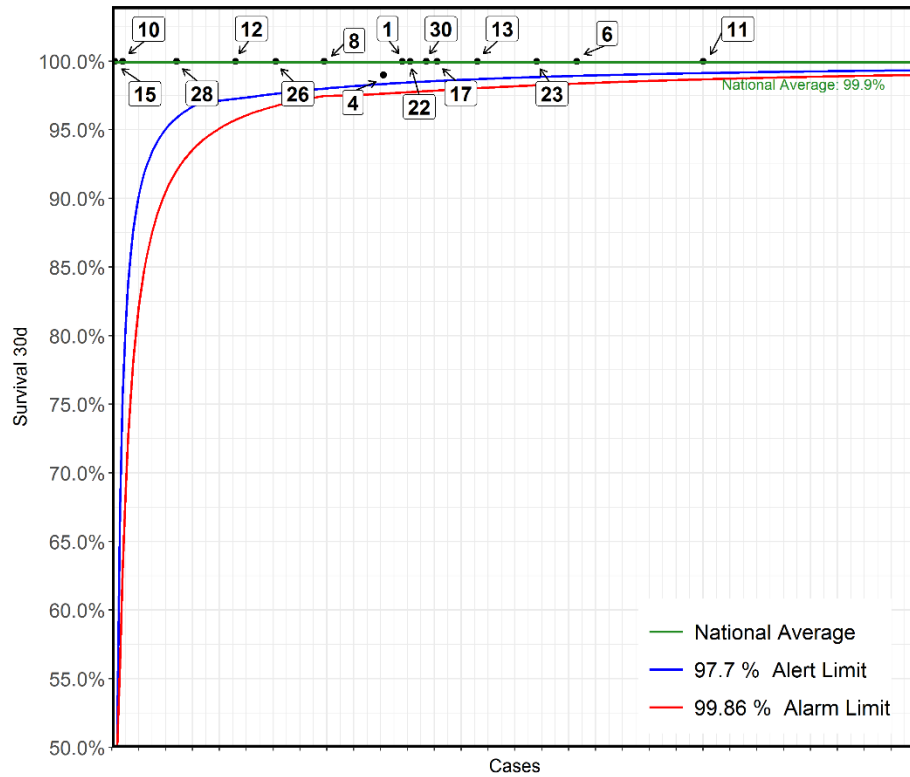
Electrophysiology: Transluminal ablation procedure for arrhythmia  
2017-20 - ACHD cases only



No	Hospital Name	Survival 30d
**22	London Royal Brompton Hospital	100%
29	London Barts Heart Centre	100%
***6	Bristol Royal Hospital For Children	100%
***8	Newcastle Freeman Hospital	99%
*5	Liverpool Heart and Chest Hospital	100%
30	Southampton Wessex Cardiothoracic Centre	100%
*13	London Evelina London Children's Hospital	100%
17	Leeds General Infirmary	99%
*28	Belfast Royal Victoria Hospital	100%
11	London Great Ormond Street Hospital for Children	100%
4	Birmingham Children's Hospital	100%
1	Liverpool Alder Hey Hospital	100%
12	Leicester Glenfield Hospital	97%
10	Glasgow Golden Jubilee National Hospital	100%
19	Manchester Royal Infirmary	100%
23	Dublin Our Lady's Children's Hospital	100%
26	Glasgow Royal Hospital for Children	100%
15	London Harley Street Clinic	100%

\*This Funnel plot includes 1 patient(s) at least from this centre who had 2 procedures within the same 30 day time period.  
The procedure for this patient has only been counted once in this display with respect to life status for statistical reasons to ensure the patient is not counted as alive or deceased twice over.

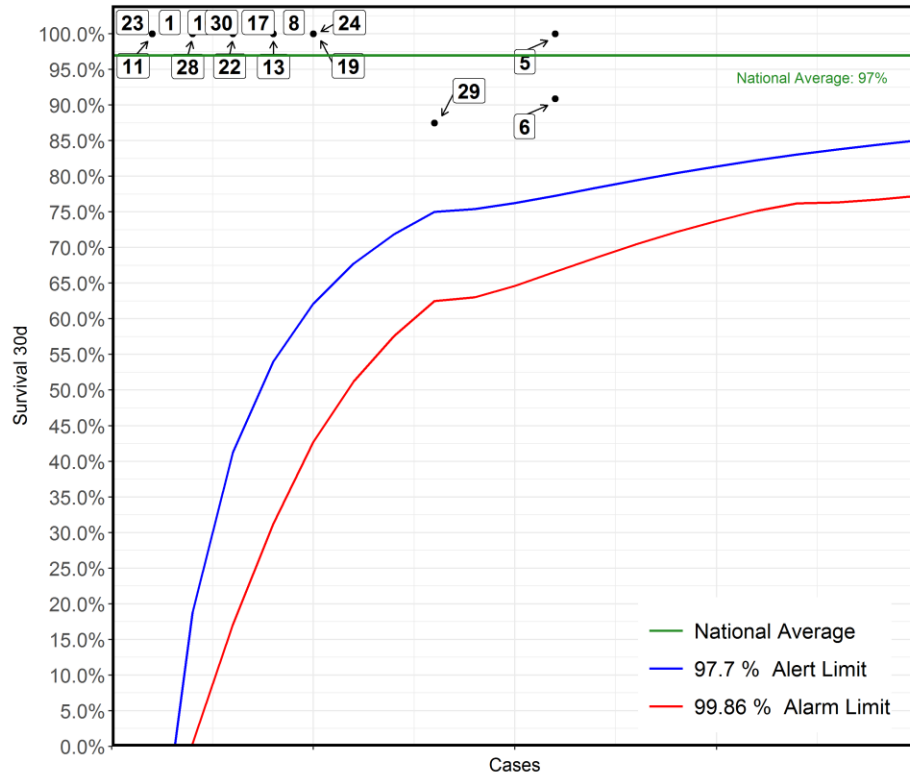
Electrophysiology: Transluminal ablation procedure for arrhythmia  
2017-20 - Paediatric cases only



No	Hospital Name	Survival 30d
*11	London Great Ormond Street Hospital for Children	100%
*6	Bristol Royal Hospital For Children	100%
***23	Dublin Our Lady's Children's Hospital	100%
*13	London Evelina London Children's Hospital	100%
17	Leeds General Infirmary	100%
30	Southampton Wessex Cardiothoracic Centre	100%
*22	London Royal Brompton Hospital	100%
*1	Liverpool Alder Hey Hospital	100%
***4	Birmingham Children's Hospital	99%
8	Newcastle Freeman Hospital	100%
26	Glasgow Royal Hospital for Children	100%
12	Leicester Glenfield Hospital	100%
28	Belfast Royal Victoria Hospital	100%
10	Glasgow Golden Jubilee National Hospital	100%
15	London Harley Street Clinic	100%

\*This Funnel plot includes 1 patient(s) at least from this centre who had 2 procedures within the same 30 day time period.  
The procedure for this patient has only been counted once in this display with respect to life status for statistical reasons to ensure the patient is not counted as alive or deceased twice over.

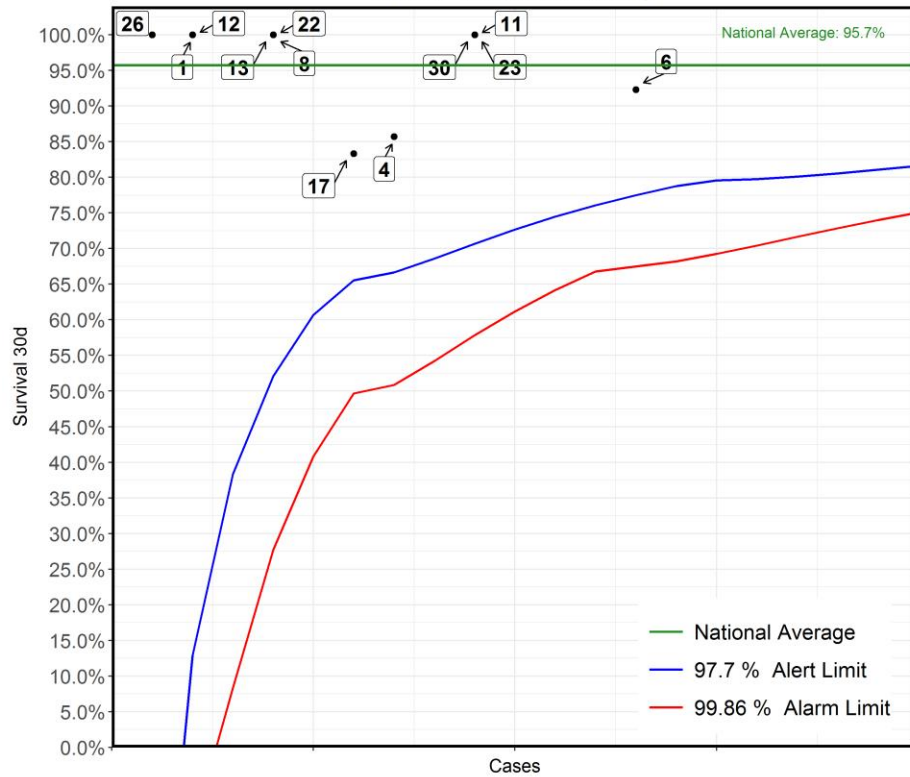
Electrophysiology: Miscellaneous electrophysiology (EP) procedures  
2017-20 - ACHD cases only



No	Hospital Name	Survival 30d
5	Liverpool Heart and Chest Hospital	100%
6	Bristol Royal Hospital For Children	91%
29	London Barts Heart Centre	88%
8	Newcastle Freeman Hospital	100%
*19	Manchester Royal Infirmary	100%
24	Birmingham Queen Elizabeth Hospital	100%
13	London Evelina London Children's Hospital	100%
17	Leeds General Infirmary	100%
22	London Royal Brompton Hospital	100%
30	Southampton Wessex Cardiothoracic Centre	100%
10	Glasgow Golden Jubilee National Hospital	100%
28	Belfast Royal Victoria Hospital	100%
1	Liverpool Alder Hey Hospital	100%
11	London Great Ormond Street Hospital for Children	100%
23	Dublin Our Lady's Children's Hospital	100%

\*This Funnel plot includes 1 patient(s) at least from this centre who had 2 procedures within the same 30 day time period.  
The procedure for this patient has only been counted once in this display with respect to life status for statistical reasons to ensure the patient is not counted as alive or deceased twice over.

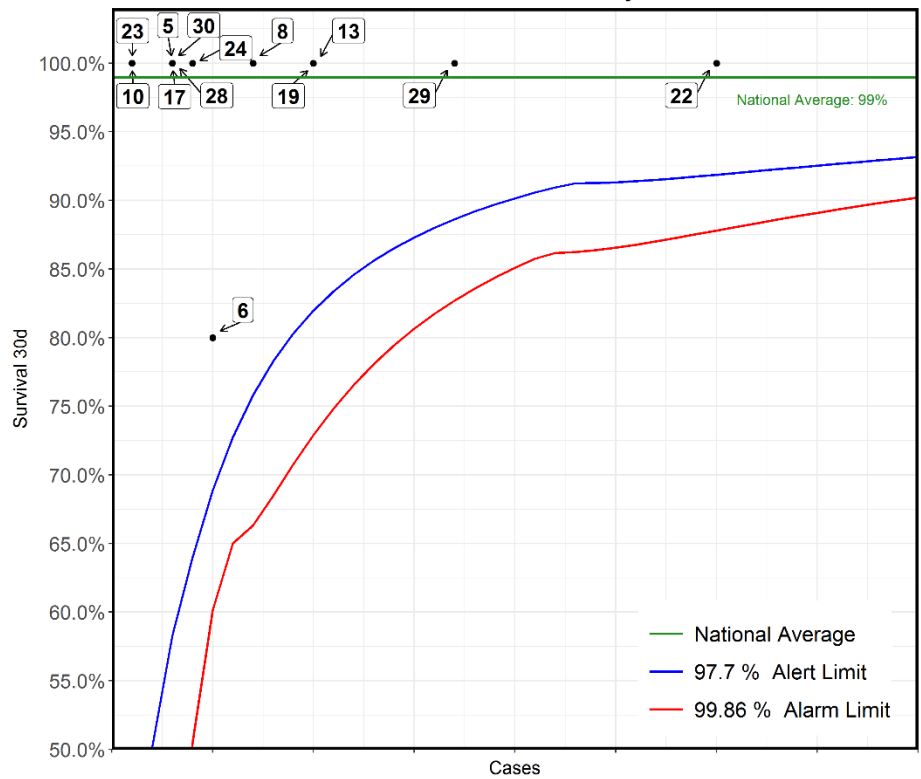
Electrophysiology: Miscellaneous electrophysiology (EP) procedures  
2017-20 - Paediatric cases only



No	Hospital Name	Survival 30d
6	Bristol Royal Hospital For Children	92%
11	London Great Ormond Street Hospital for Children	100%
23	Dublin Our Lady's Children's Hospital	100%
30	Southampton Wessex Cardiothoracic Centre	100%
4	Birmingham Children's Hospital	86%
17	Leeds General Infirmary	83%
8	Newcastle Freeman Hospital	100%
13	London Evelina London Children's Hospital	100%
22	London Royal Brompton Hospital	100%
1	Liverpool Alder Hey Hospital	100%
*12	Leicester Glenfield Hospital	100%
26	Glasgow Royal Hospital for Children	100%

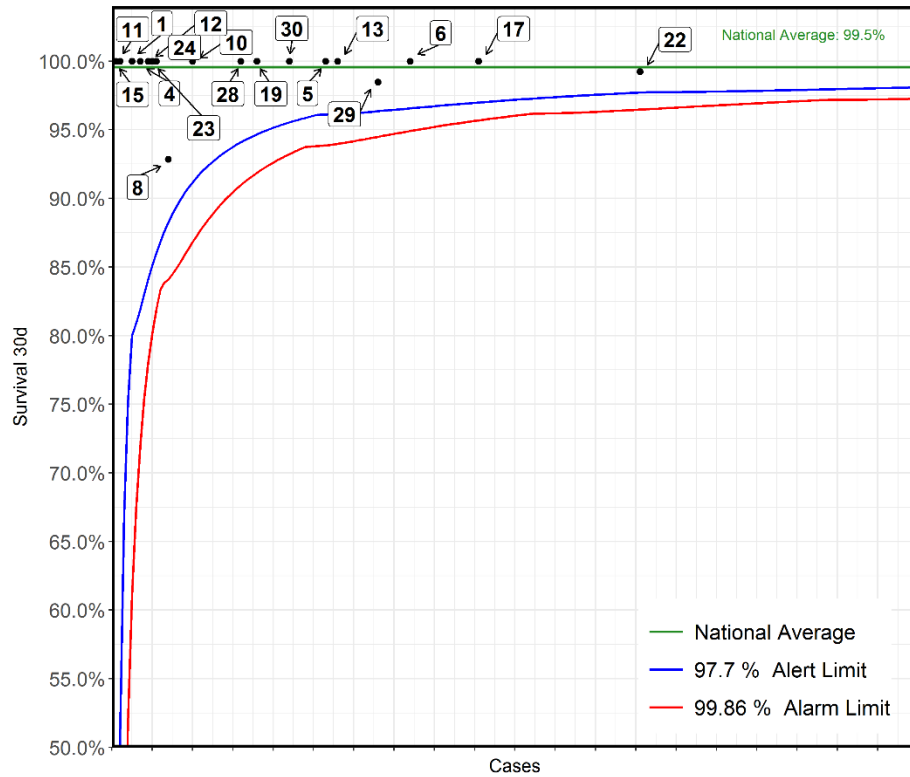
\*This Funnel plot includes 1 patient(s) at least from this centre who had 2 procedures within the same 30 day time period. The procedure for this patient has only been counted once in this display with respect to life status for statistical reasons to ensure the patient is not counted as alive or deceased twice over.

**trophysiology: Biventricular implantable cardioverter & defibrillator (ICD) implantation or pacemaker system placement  
2017-20 - ACHD cases only**



No	Hospital Name	Survival 30d
22	London Royal Brompton Hospital	100%
29	London Barts Heart Centre	100%
13	London Evelina London Children's Hospital	100%
19	Manchester Royal Infirmary	100%
8	Newcastle Freeman Hospital	100%
6	Bristol Royal Hospital For Children	80%
24	Birmingham Queen Elizabeth Hospital	100%
5	Liverpool Heart and Chest Hospital	100%
17	Leeds General Infirmary	100%
28	Belfast Royal Victoria Hospital	100%
30	Southampton Wessex Cardiothoracic Centre	100%
10	Glasgow Golden Jubilee National Hospital	100%
23	Dublin Our Lady's Children's Hospital	100%

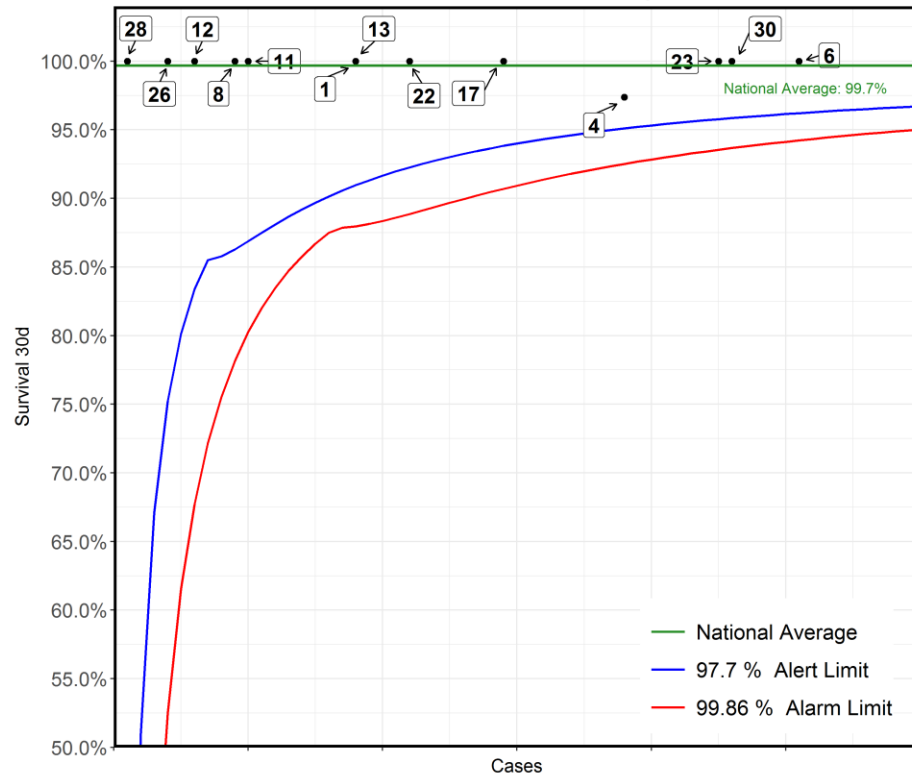
Electrophysiology: Pacemaker system placement or generator replacement - surgical  
2017-20 - ACHD cases only



No	Hospital Name	Survival 30d
22	London Royal Brompton Hospital	99%
17	Leeds General Infirmary	100%
6	Bristol Royal Hospital For Children	100%
29	London Barts Heart Centre	98%
13	London Evelina London Children's Hospital	100%
*5	Liverpool Heart and Chest Hospital	100%
30	Southampton Wessex Cardiothoracic Centre	100%
19	Manchester Royal Infirmary	100%
28	Belfast Royal Victoria Hospital	100%
10	Glasgow Golden Jubilee National Hospital	100%
8	Newcastle Freeman Hospital	93%
24	Birmingham Queen Elizabeth Hospital	100%
23	Dublin Our Lady's Children's Hospital	100%
12	Leicester Glenfield Hospital	100%
4	Birmingham Children's Hospital	100%
1	Liverpool Alder Hey Hospital	100%
11	London Great Ormond Street Hospital for Children	100%
15	London Harley Street Clinic	100%

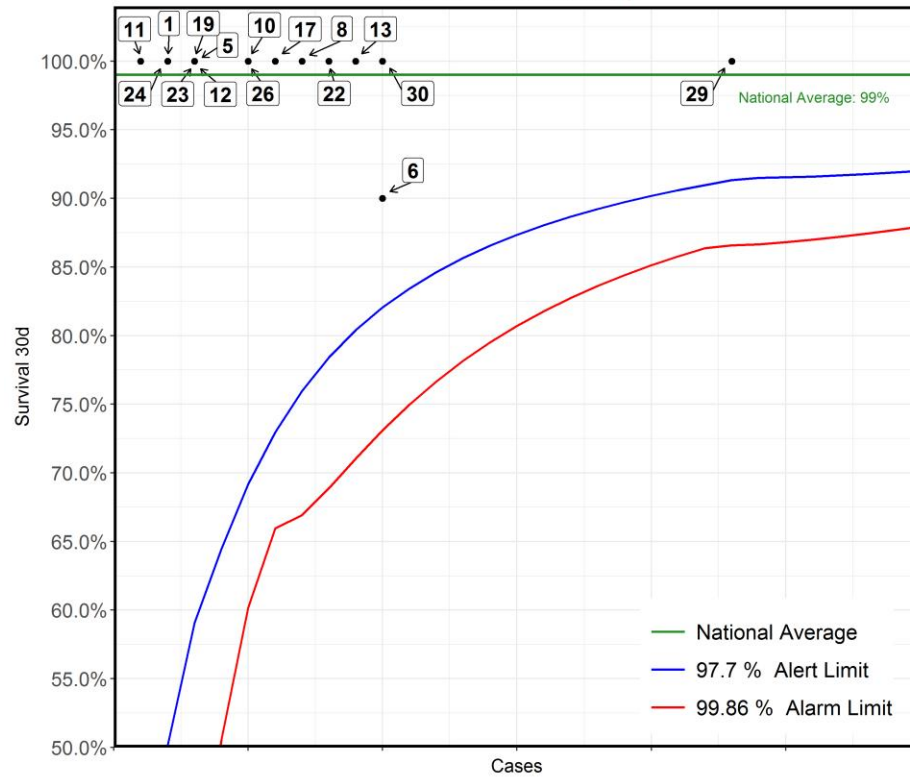
\*This Funnel plot includes 1 patient(s) at least from this centre who had 2 procedures within the same 30 day time period.  
The procedure for this patient has only been counted once in this display with respect to life status for statistical reasons to ensure the patient is not counted as alive or deceased twice over.

Electrophysiology: Pacemaker system placement or generator replacement - surgical  
2017-20 - Paediatric cases only



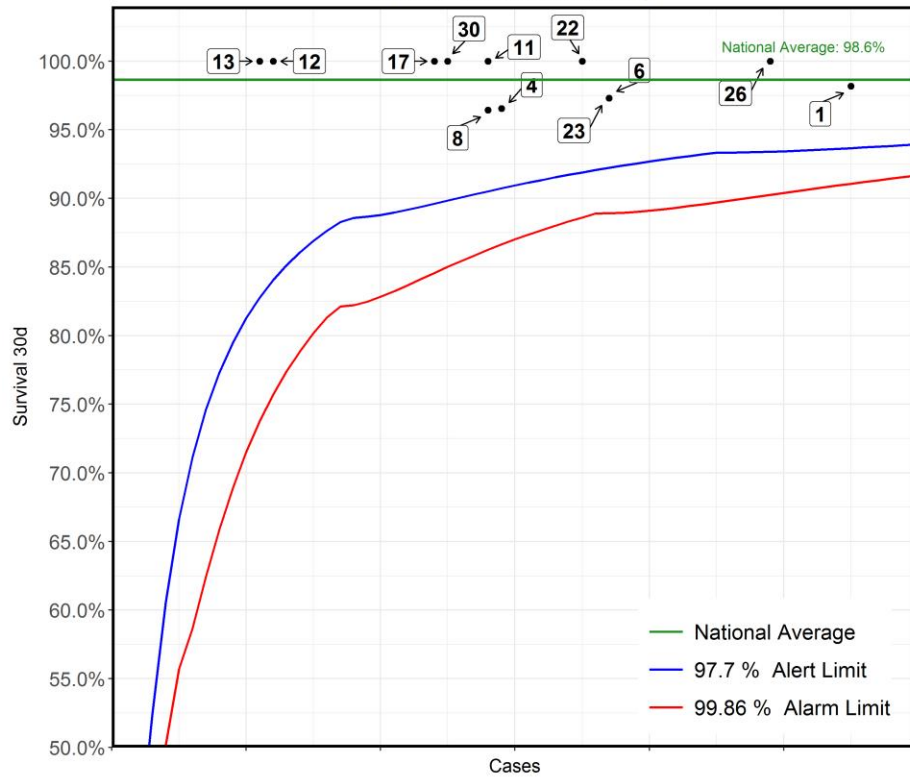
No	Hospital Name	Survival 30d
6	Bristol Royal Hospital For Children	100%
30	Southampton Wessex Cardiothoracic Centre	100%
23	Dublin Our Lady's Children's Hospital	100%
4	Birmingham Children's Hospital	97%
17	Leeds General Infirmary	100%
22	London Royal Brompton Hospital	100%
1	Liverpool Alder Hey Hospital	100%
13	London Evelina London Children's Hospital	100%
11	London Great Ormond Street Hospital for Children	100%
8	Newcastle Freeman Hospital	100%
12	Leicester Glenfield Hospital	100%
26	Glasgow Royal Hospital for Children	100%
28	Belfast Royal Victoria Hospital	100%

Electrophysiology: Permanent epicardial pacemaker system placement  
2017-20 - ACHD cases only



No	Hospital Name	Survival 30d
29	London Barts Heart Centre	100%
6	Bristol Royal Hospital For Children	90%
30	Southampton Wessex Cardiothoracic Centre	100%
13	London Evelina London Children's Hospital	100%
22	London Royal Brompton Hospital	100%
8	Newcastle Freeman Hospital	100%
17	Leeds General Infirmary	100%
10	Glasgow Golden Jubilee National Hospital	100%
26	Glasgow Royal Hospital for Children	100%
5	Liverpool Heart and Chest Hospital	100%
12	Leicester Glenfield Hospital	100%
19	Manchester Royal Infirmary	100%
23	Dublin Our Lady's Children's Hospital	100%
1	Liverpool Alder Hey Hospital	100%
24	Birmingham Queen Elizabeth Hospital	100%
11	London Great Ormond Street Hospital for Children	100%

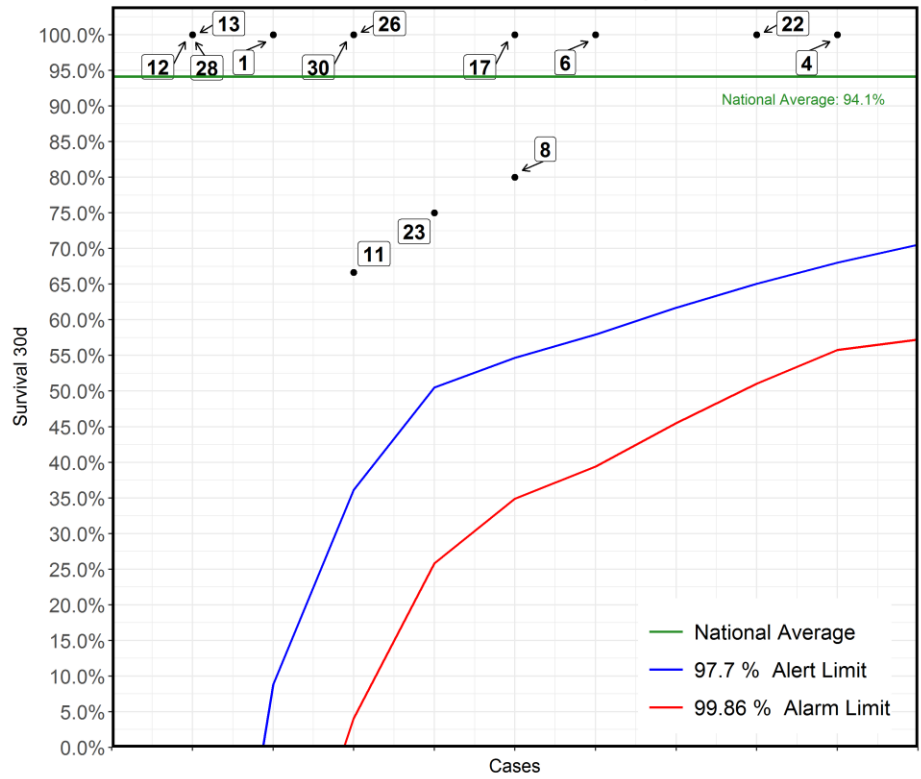
Electrophysiology: Permanent epicardial pacemaker system placement  
2017-20 - Paediatric cases only



No	Hospital Name	Survival 30d
1	Liverpool Alder Hey Hospital	98%
*26	Glasgow Royal Hospital for Children	100%
6	Bristol Royal Hospital For Children	97%
23	Dublin Our Lady's Children's Hospital	97%
22	London Royal Brompton Hospital	100%
4	Birmingham Children's Hospital	97%
*8	Newcastle Freeman Hospital	96%
11	London Great Ormond Street Hospital for Children	100%
30	Southampton Wessex Cardiothoracic Centre	100%
17	Leeds General Infirmary	100%
12	Leicester Glenfield Hospital	100%
13	London Evelina London Children's Hospital	100%

\*This Funnel plot includes 1 patient(s) at least from this centre who had 2 procedures within the same 30 day time period.  
The procedure for this patient has only been counted once in this display with respect to life status for statistical reasons to ensure the patient is not counted as alive or deceased twice over.

Electrophysiology: Pacemaker lead procedure  
2017-20 - Paediatric cases only



No	Hospital Name	Survival 30d
4	Birmingham Children's Hospital	100%
22	London Royal Brompton Hospital	100%
6	Bristol Royal Hospital For Children	100%
8	Newcastle Freeman Hospital	80%
17	Leeds General Infirmary	100%
23	Dublin Our Lady's Children's Hospital	75%
11	London Great Ormond Street Hospital for Children	67%
26	Glasgow Royal Hospital for Children	100%
30	Southampton Wessex Cardiothoracic Centre	100%
1	Liverpool Alder Hey Hospital	100%
12	Leicester Glenfield Hospital	100%
13	London Evelina London Children's Hospital	100%
28	Belfast Royal Victoria Hospital	100%