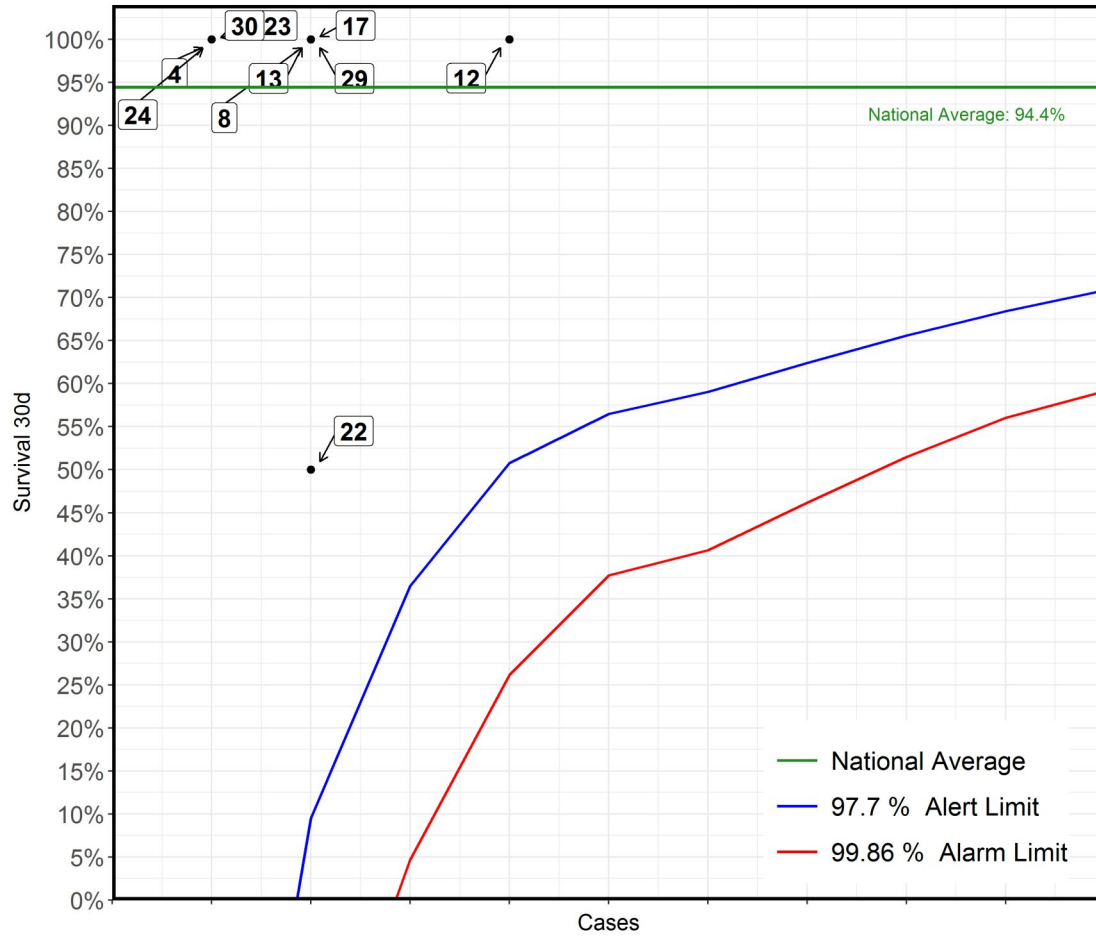
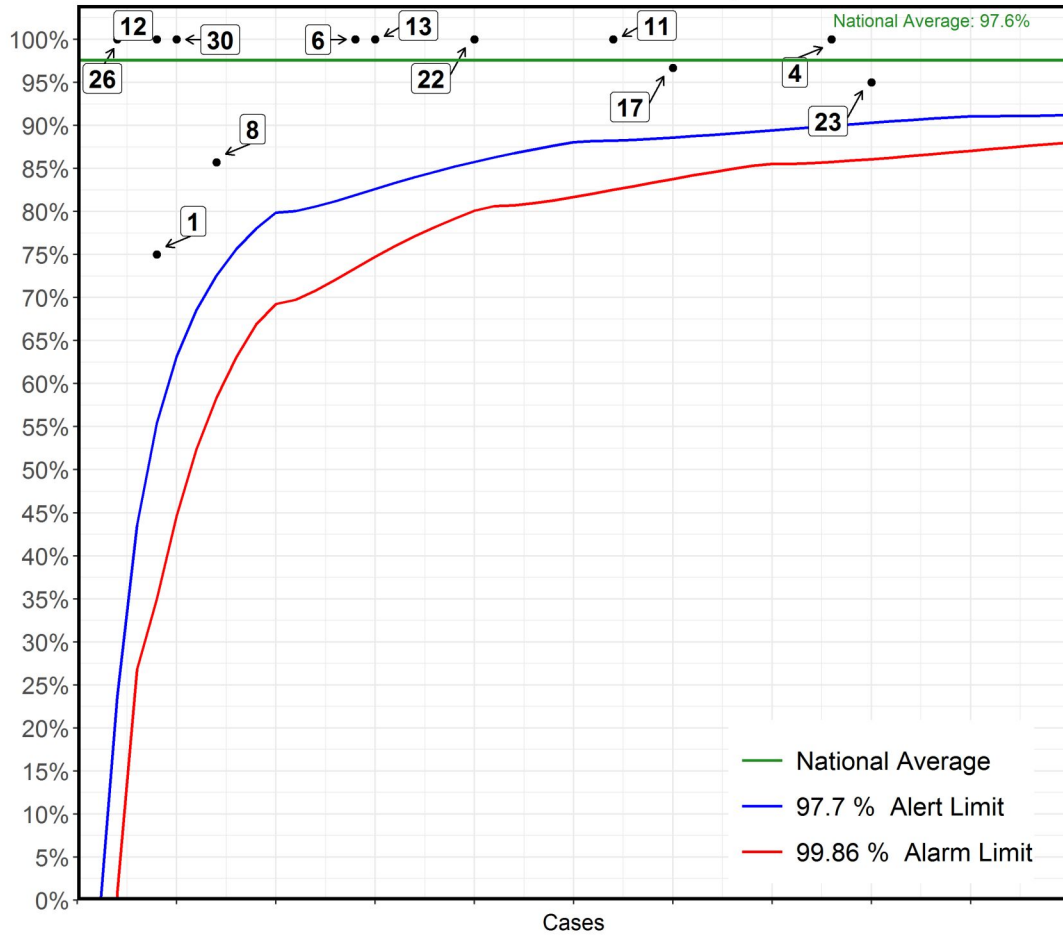


**Transcatheter: Stent placement in right ventricular outflow tract (RVOT)
2016-19 - ACHD cases only**



| No | Hospital Name | Survival 30d |
|----|---|--------------|
| 12 | Leicester Glenfield Hospital | 100% |
| 8 | Newcastle Freeman Hospital | 100% |
| 13 | London Evelina London Children's Hospital | 100% |
| 17 | Leeds General Infirmary | 100% |
| 22 | London Royal Brompton Hospital | 50% |
| 29 | London Barts Heart Centre | 100% |
| 4 | Birmingham Children's Hospital | 100% |
| 23 | Dublin Our Lady's Children's Hospital | 100% |
| 24 | Birmingham Queen Elizabeth Hospital | 100% |
| 30 | Southampton Wessex Cardiothoracic Centre | 100% |

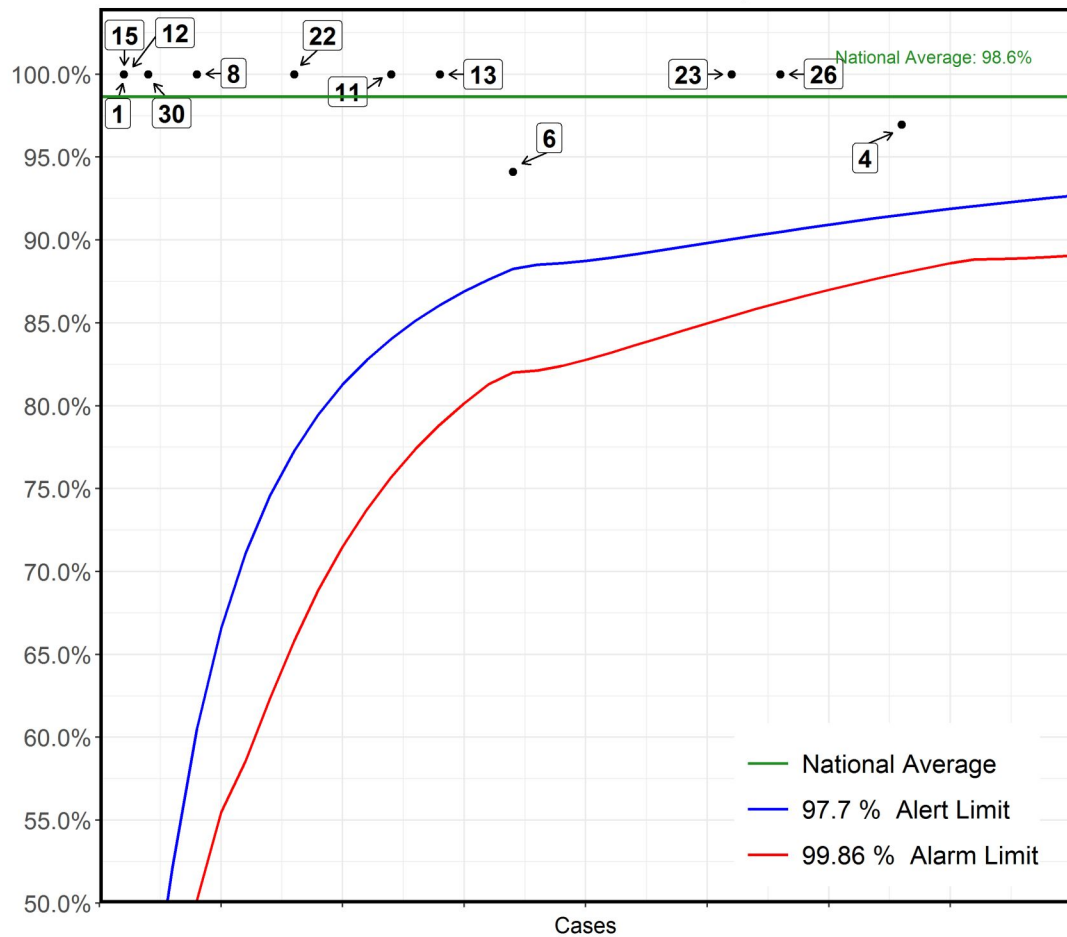
**Transcatheter: Stent placement in right ventricular outflow tract (RVOT)
2016-19 - Paediatric cases only**



| No | Hospital Name | Survival 30d |
|-----|--|--------------|
| *23 | Dublin Our Lady's Children's Hospital | 95% |
| 4 | Birmingham Children's Hospital | 100% |
| 17 | Leeds General Infirmary | 97% |
| 11 | London Great Ormond Street Hospital for Children | 100% |
| *22 | London Royal Brompton Hospital | 100% |
| 13 | London Evelina London Children's Hospital | 100% |
| 6 | Bristol Royal Hospital For Children | 100% |
| 8 | Newcastle Freeman Hospital | 86% |
| 30 | Southampton Wessex Cardiothoracic Centre | 100% |
| 1 | Liverpool Alder Hey Hospital | 75% |
| 12 | Leicester Glenfield Hospital | 100% |
| 26 | Glasgow Royal Hospital for Children | 100% |

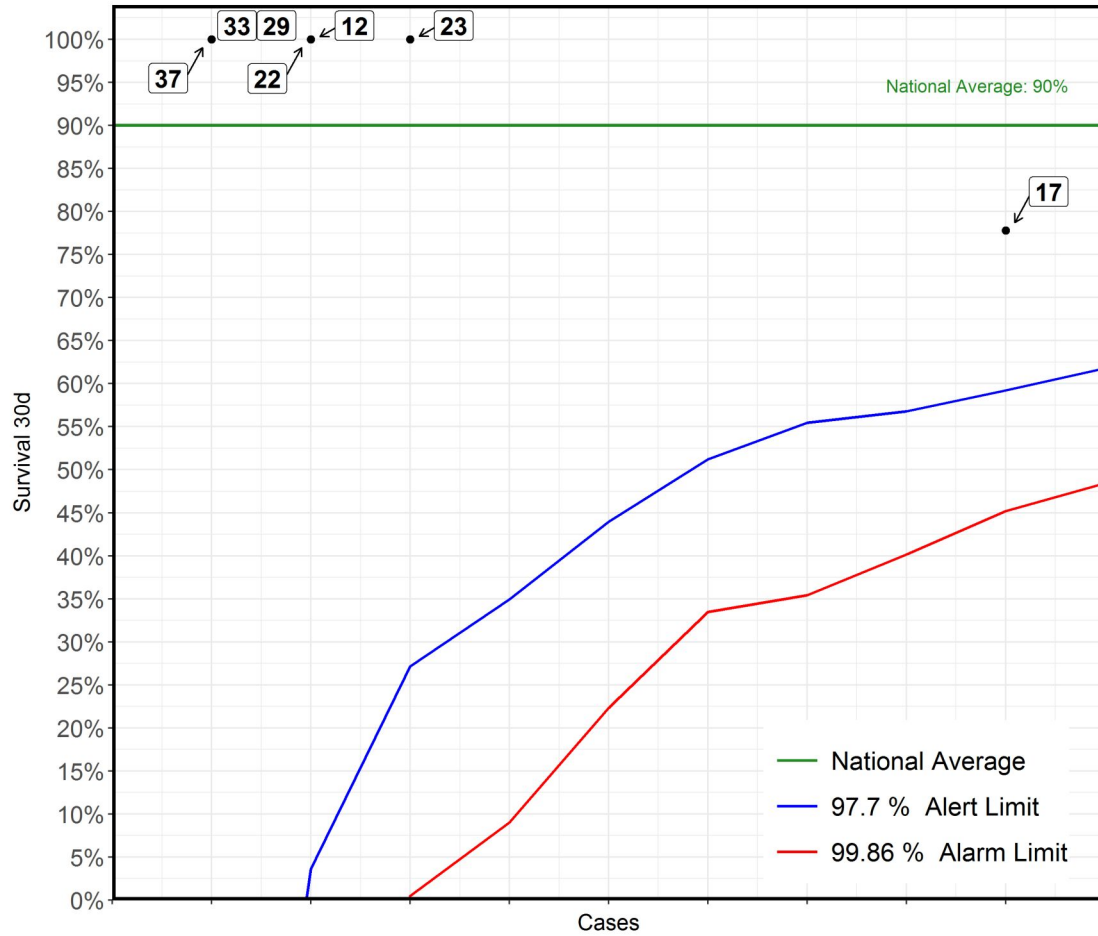
*This Funnel plot includes 1 patient(s) at least from this centre who had 2 procedures within the same 30 day time period. The procedure for this patient has only been counted once in this display with respect to life status for statistical reasons to ensure the patient is not counted as alive or deceased twice over.

**Transcatheter: Stent redilation
2016-19 - Paediatric cases only**



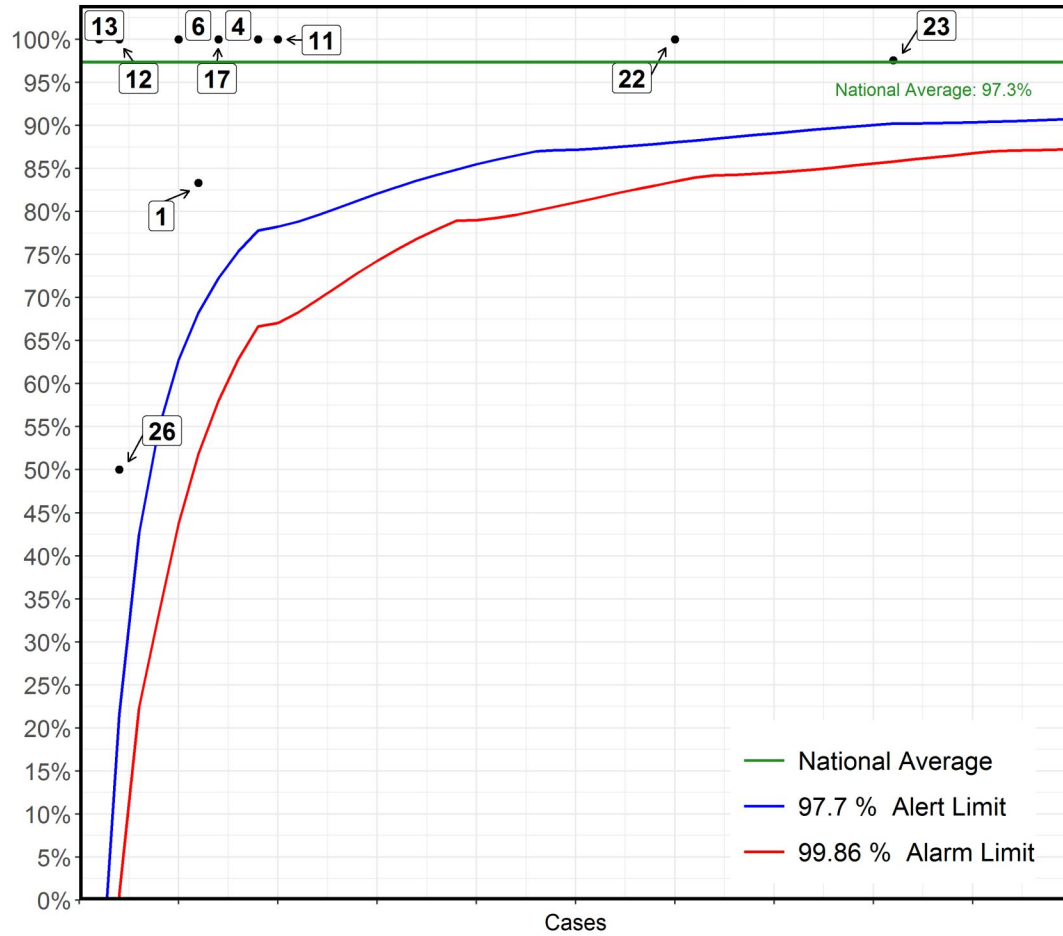
| No | Hospital Name | Survival 30d |
|----|--|--------------|
| 4 | Birmingham Children's Hospital | 97% |
| 26 | Glasgow Royal Hospital for Children | 100% |
| 23 | Dublin Our Lady's Children's Hospital | 100% |
| 6 | Bristol Royal Hospital For Children | 94% |
| 13 | London Evelina London Children's Hospital | 100% |
| 11 | London Great Ormond Street Hospital for Children | 100% |
| 22 | London Royal Brompton Hospital | 100% |
| 8 | Newcastle Freeman Hospital | 100% |
| 30 | Southampton Wessex Cardiothoracic Centre | 100% |
| 1 | Liverpool Alder Hey Hospital | 100% |
| 12 | Leicester Glenfield Hospital | 100% |
| 15 | London Harley Street Clinic | 100% |

Transcatheter: Transluminal ventricular septal defect (VSD) closure
2016-19 - ACHD cases only



| No | Hospital Name | Survival 30d |
|----|--|--------------|
| 17 | Leeds General Infirmary | 78% |
| 23 | Dublin Our Lady's Children's Hospital | 100% |
| 12 | Leicester Glenfield Hospital | 100% |
| 22 | London Royal Brompton Hospital | 100% |
| 29 | London Barts Heart Centre | 100% |
| 33 | Stoke University Hospital of North Staffordshire | 100% |
| 37 | Blackpool Victoria Hospital | 100% |

Transcatheter: Transluminal ventricular septal defect (VSD) closure
2016-19 - Paediatric cases only



| No | Hospital Name | Survival 30d |
|----|--|--------------|
| 23 | Dublin Our Lady's Children's Hospital | 98% |
| 22 | London Royal Brompton Hospital | 100% |
| 11 | London Great Ormond Street Hospital for Children | 100% |
| 4 | Birmingham Children's Hospital | 100% |
| 17 | Leeds General Infirmary | 100% |
| *1 | Liverpool Alder Hey Hospital | 83% |
| 6 | Bristol Royal Hospital For Children | 100% |
| 12 | Leicester Glenfield Hospital | 100% |
| 26 | Glasgow Royal Hospital for Children | 50% |
| 13 | London Evelina London Children's Hospital | 100% |

*This Funnel plot includes 1 patient(s) at least from this centre who had 2 procedures within the same 30 day time period. The procedure for this patient has only been counted once in this display with respect to life status for statistical reasons to ensure the patient is not counted as alive or deceased twice over.