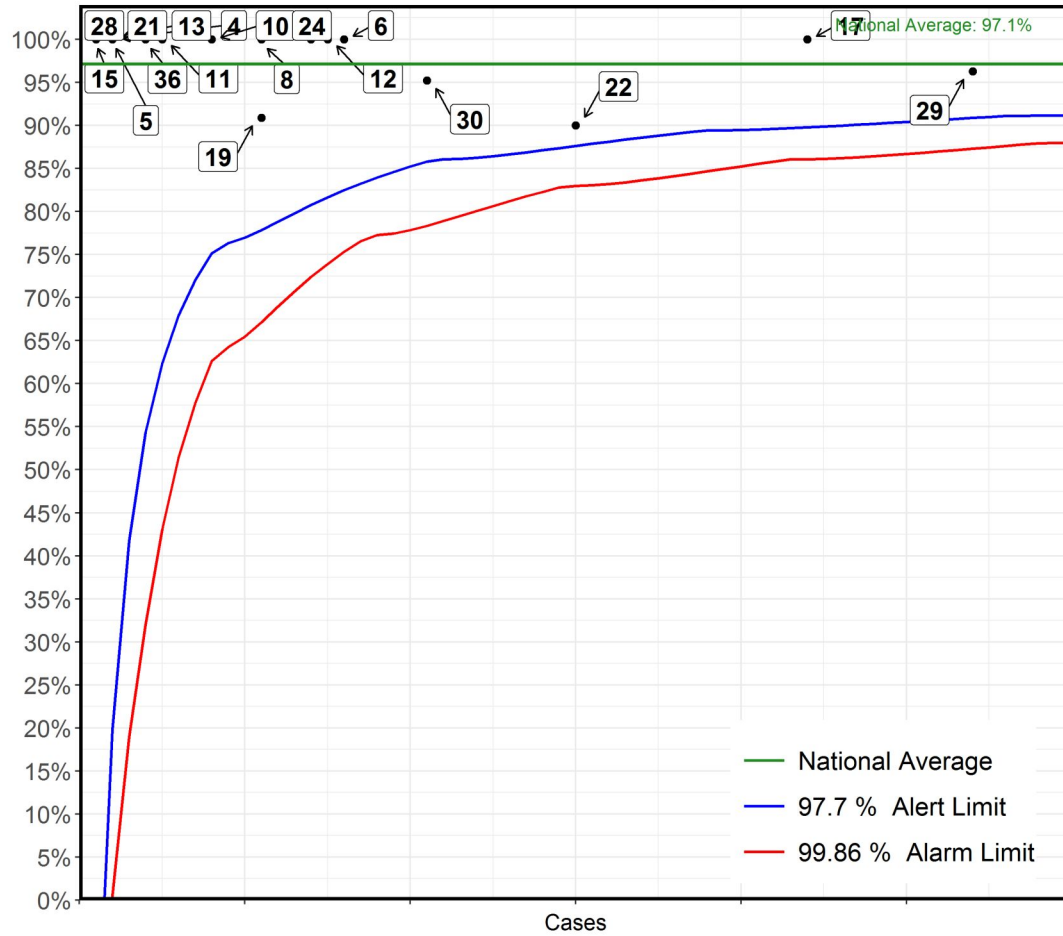


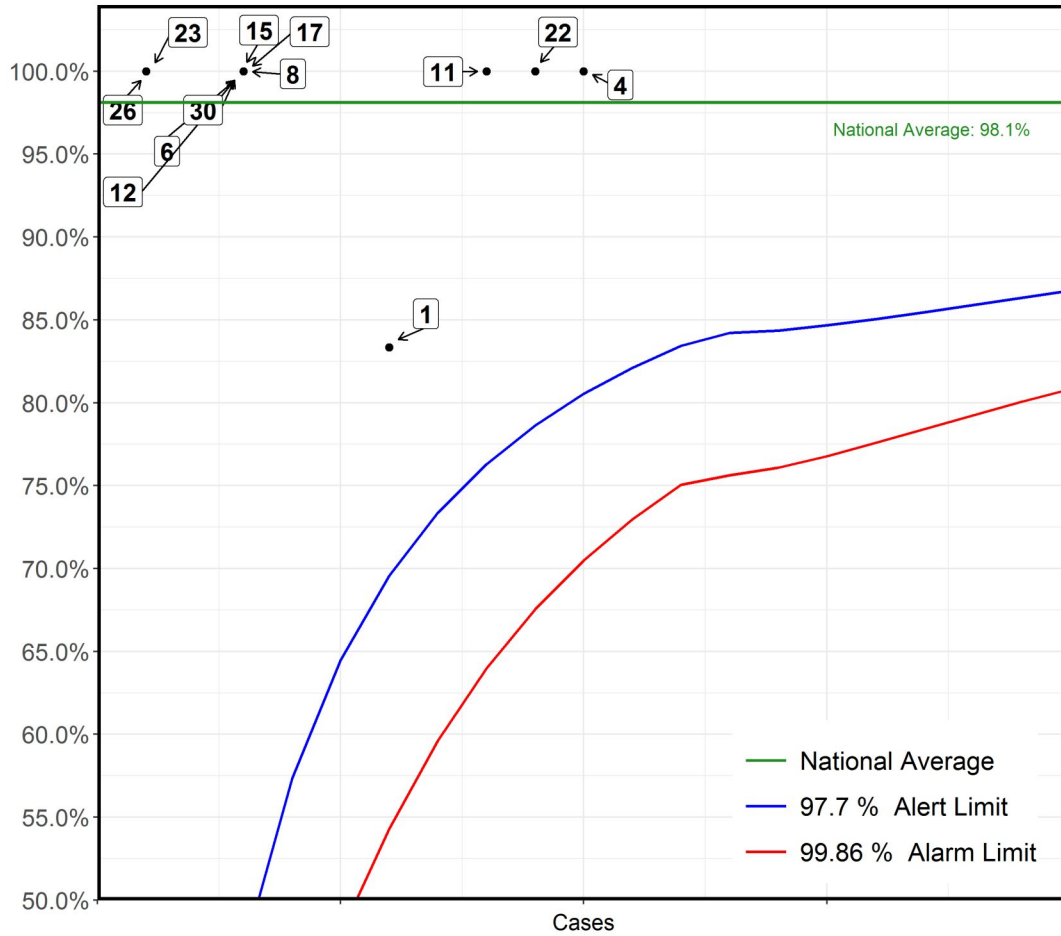
**Surgical: Aortic root replacement (non-Ross)
2016-19 - ACHD cases only**



No	Hospital Name	Survival 30d
29	London Barts Heart Centre	96%
17	Leeds General Infirmary	100%
22	London Royal Brompton Hospital	90%
30	Southampton Wessex Cardiothoracic Centre	95%
6	Bristol Royal Hospital For Children	100%
12	Leicester Glenfield Hospital	100%
24	Birmingham Queen Elizabeth Hospital	100%
8	Newcastle Freeman Hospital	100%
19	Manchester Royal Infirmary	91%
10	Glasgow Golden Jubilee National Hospital	100%
11	London Great Ormond Street Hospital for Children	100%
36	Cardiff University Hospital of Wales	100%
4	Birmingham Children's Hospital	100%
5	Liverpool Heart and Chest Hospital	100%
*13	London Evelina London Children's Hospital	100%
21	Sheffield Northern General Hospital	100%
15	London Harley Street Clinic	100%
28	Belfast Royal Victoria Hospital	100%

*This Funnel plot includes 1 patient(s) at least from this centre who had 2 procedures within the same 30 day time period.
The procedure for this patient has only been counted once in this display with respect to life status for statistical reasons to ensure the patient is not counted as alive or deceased twice over.

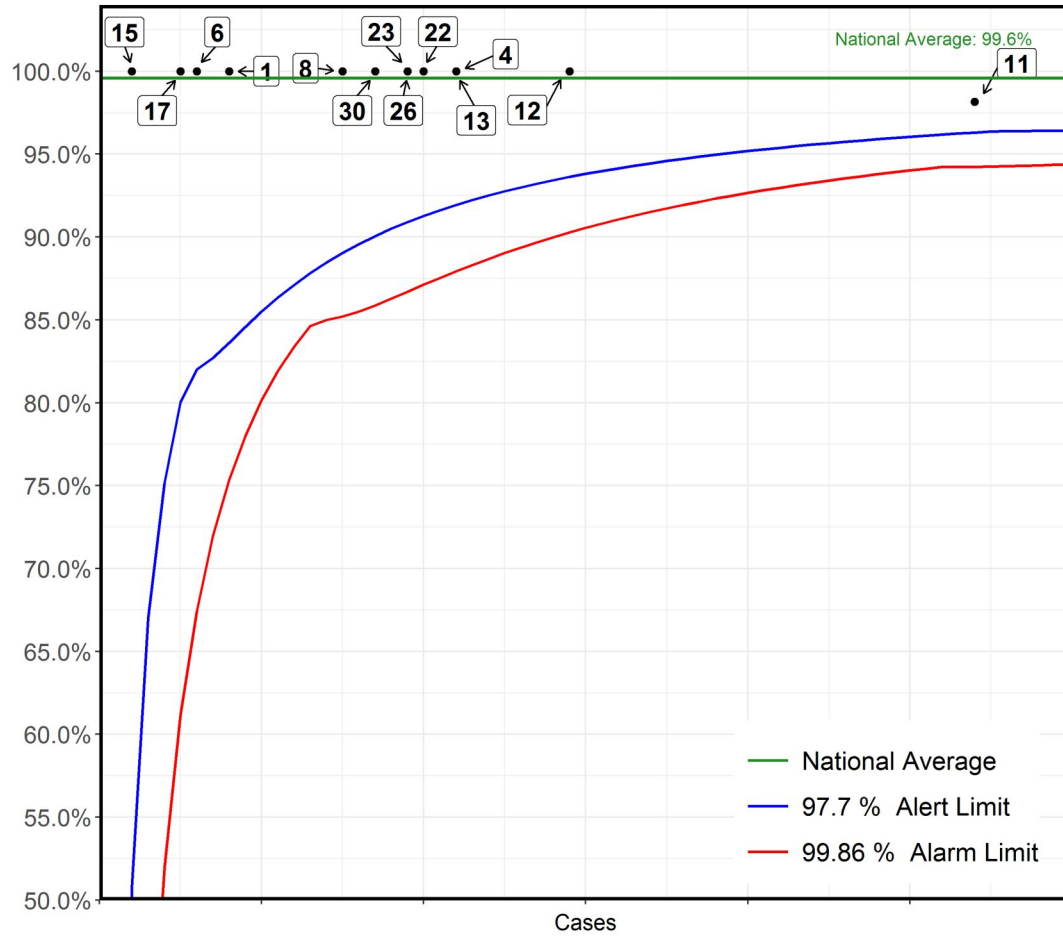
**Surgical: Aortic root replacement (non-Ross)
2016-19 - Paediatric cases only**



No	Hospital Name	Survival 30d
4	Birmingham Children's Hospital	100%
22	London Royal Brompton Hospital	100%
*11	London Great Ormond Street Hospital for Children	100%
1	Liverpool Alder Hey Hospital	83%
6	Bristol Royal Hospital For Children	100%
8	Newcastle Freeman Hospital	100%
12	Leicester Glenfield Hospital	100%
15	London Harley Street Clinic	100%
17	Leeds General Infirmary	100%
30	Southampton Wessex Cardiothoracic Centre	100%
23	Dublin Our Lady's Children's Hospital	100%
26	Glasgow Royal Hospital for Children	100%

*This Funnel plot includes 1 patient(s) at least from this centre who had 2 procedures within the same 30 day time period. The procedure for this patient has only been counted once in this display with respect to life status for statistical reasons to ensure the patient is not counted as alive or deceased twice over.

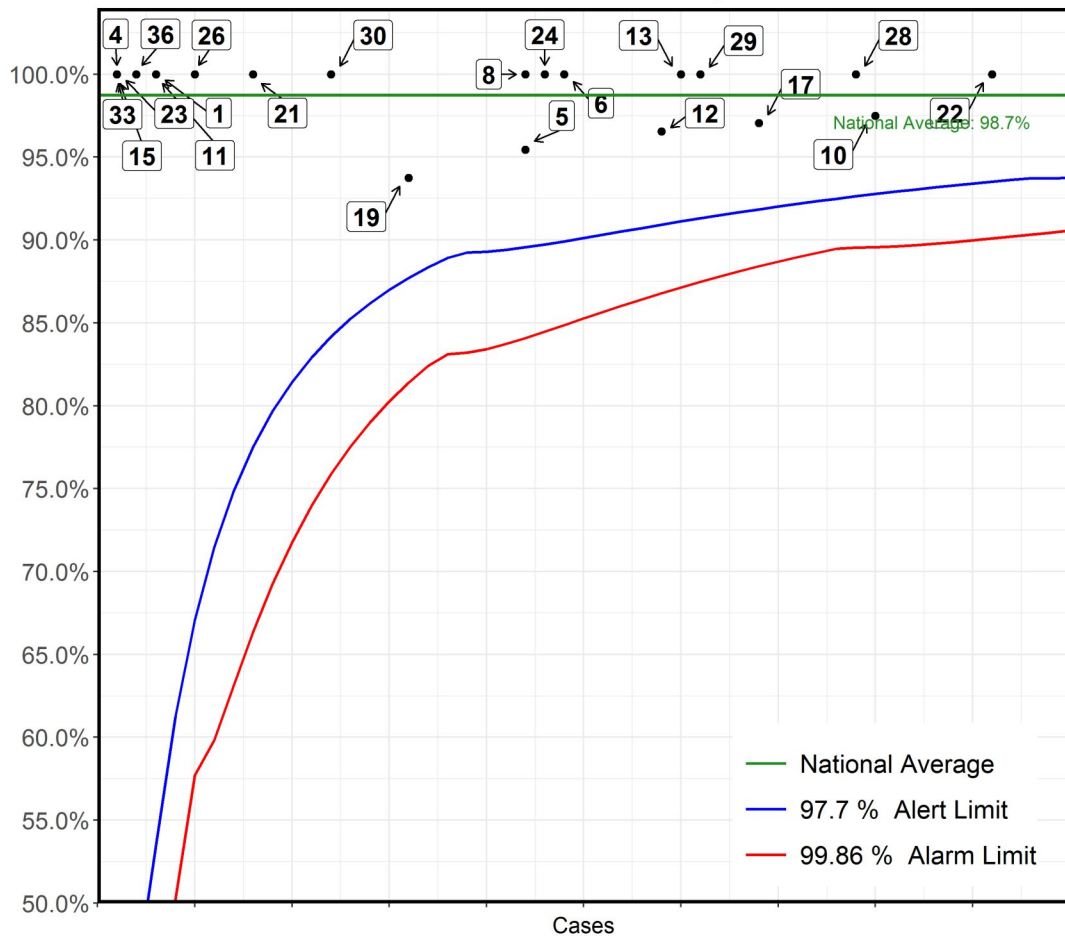
**Surgical: Aortic valve repair
2016-19 - Paediatric cases only**



No	Hospital Name	Survival 30d
11	London Great Ormond Street Hospital for Children	98%
12	Leicester Glenfield Hospital	100%
4	Birmingham Children's Hospital	100%
13	London Evelina London Children's Hospital	100%
*22	London Royal Brompton Hospital	100%
23	Dublin Our Lady's Children's Hospital	100%
26	Glasgow Royal Hospital for Children	100%
30	Southampton Wessex Cardiothoracic Centre	100%
8	Newcastle Freeman Hospital	100%
1	Liverpool Alder Hey Hospital	100%
6	Bristol Royal Hospital For Children	100%
17	Leeds General Infirmary	100%
15	London Harley Street Clinic	100%

*This Funnel plot includes 1 patient(s) at least from this centre who had 2 procedures within the same 30 day time period. The procedure for this patient has only been counted once in this display with respect to life status for statistical reasons to ensure the patient is not counted as alive or deceased twice over.

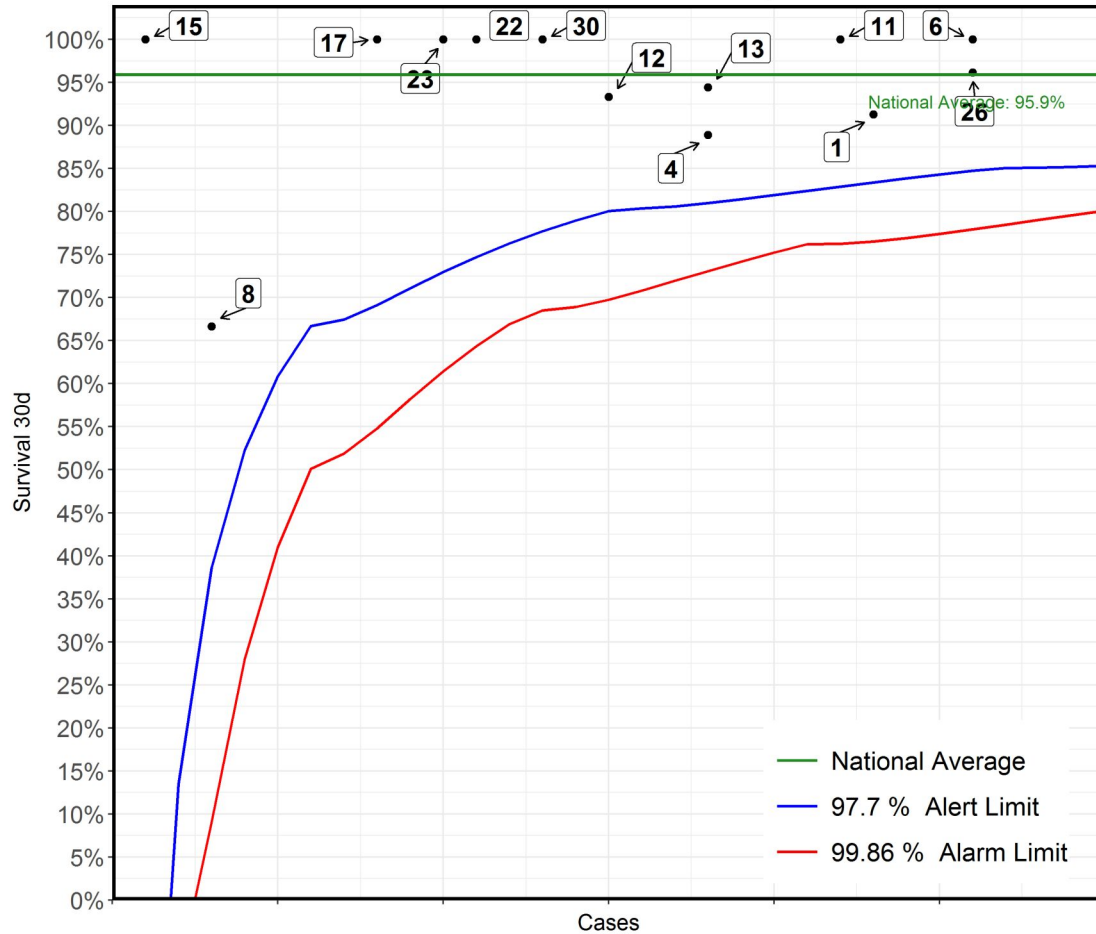
**Surgical: Aortic valve replacement (non-Ross)
2016-19 - ACHD cases only**



No	Hospital Name	Survival 30d
*22	London Royal Brompton Hospital	100%
*10	Glasgow Golden Jubilee National Hospital	98%
28	Belfast Royal Victoria Hospital	100%
17	Leeds General Infirmary	97%
29	London Barts Heart Centre	100%
13	London Evelina London Children's Hospital	100%
12	Leicester Glenfield Hospital	97%
6	Bristol Royal Hospital For Children	100%
24	Birmingham Queen Elizabeth Hospital	100%
5	Liverpool Heart and Chest Hospital	95%
8	Newcastle Freeman Hospital	100%
19	Manchester Royal Infirmary	94%
30	Southampton Wessex Cardiothoracic Centre	100%
21	Sheffield Northern General Hospital	100%
*26	Glasgow Royal Hospital for Children	100%
1	Liverpool Alder Hey Hospital	100%
11	London Great Ormond Street Hospital for Children	100%
36	Cardiff University Hospital of Wales	100%
4	Birmingham Children's Hospital	100%
15	London Harley Street Clinic	100%
23	Dublin Our Lady's Children's Hospital	100%
33	Stoke University Hospital of North Staffordshire	100%

*This Funnel plot includes 1 patient(s) at least from this centre who had 2 procedures within the same 30 day time period. The procedure for this patient has only been counted once in this display with respect to life status for statistical reasons to ensure the patient is not counted as alive or deceased twice over.

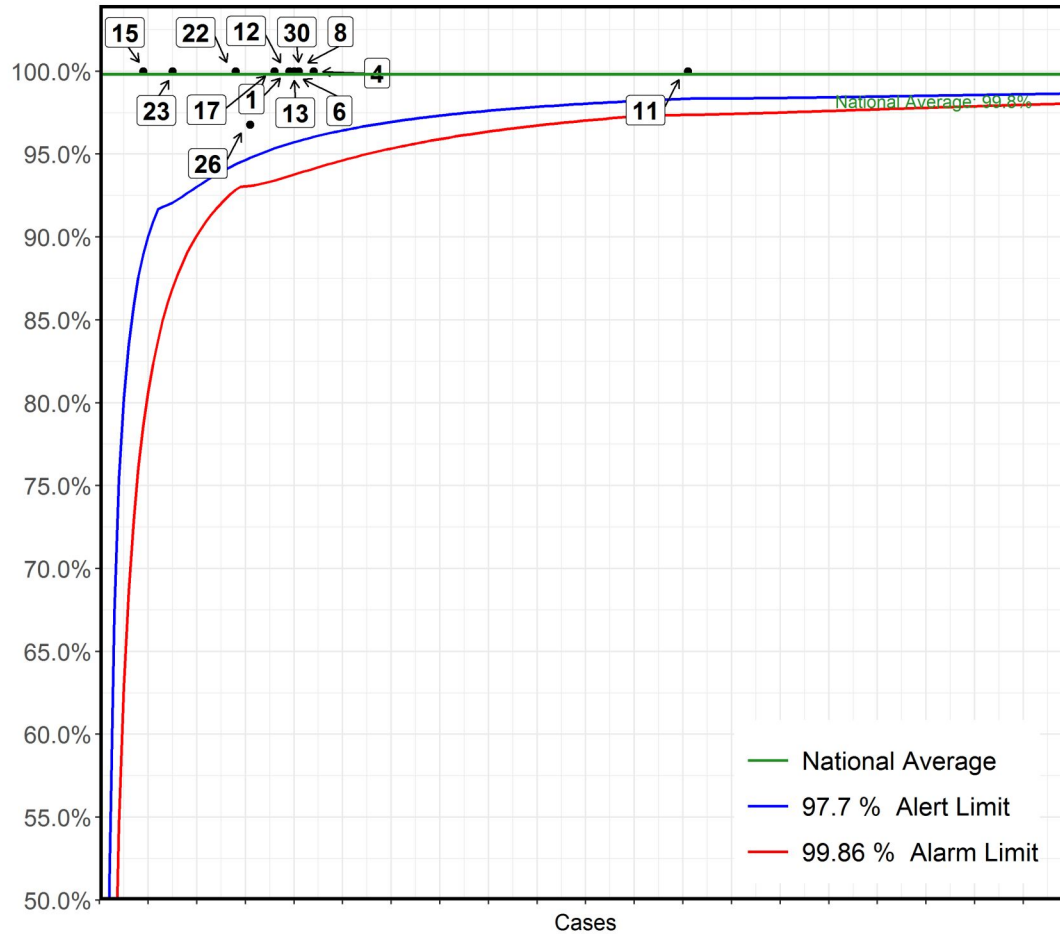
**Surgical: Systemic-to-pulmonary arterial shunt procedure (includes Blalock-Taussig & central shunts)
2016-19 - Paediatric cases only**



No	Hospital Name	Survival 30d
6	Bristol Royal Hospital For Children	100%
26	Glasgow Royal Hospital for Children	96%
1	Liverpool Alder Hey Hospital	91%
**11	London Great Ormond Street Hospital for Children	100%
4	Birmingham Children's Hospital	89%
**13	London Evelina London Children's Hospital	94%
*12	Leicester Glenfield Hospital	93%
*30	Southampton Wessex Cardiothoracic Centre	100%
22	London Royal Brompton Hospital	100%
*23	Dublin Our Lady's Children's Hospital	100%
17	Leeds General Infirmary	100%
8	Newcastle Freeman Hospital	67%
15	London Harley Street Clinic	100%

*This Funnel plot includes 1 patient(s) at least from this centre who had 2 procedures within the same 30 day time period.
The procedure for this patient has only been counted once in this display with respect to life status for statistical reasons to ensure the patient is not counted as alive or deceased twice over.

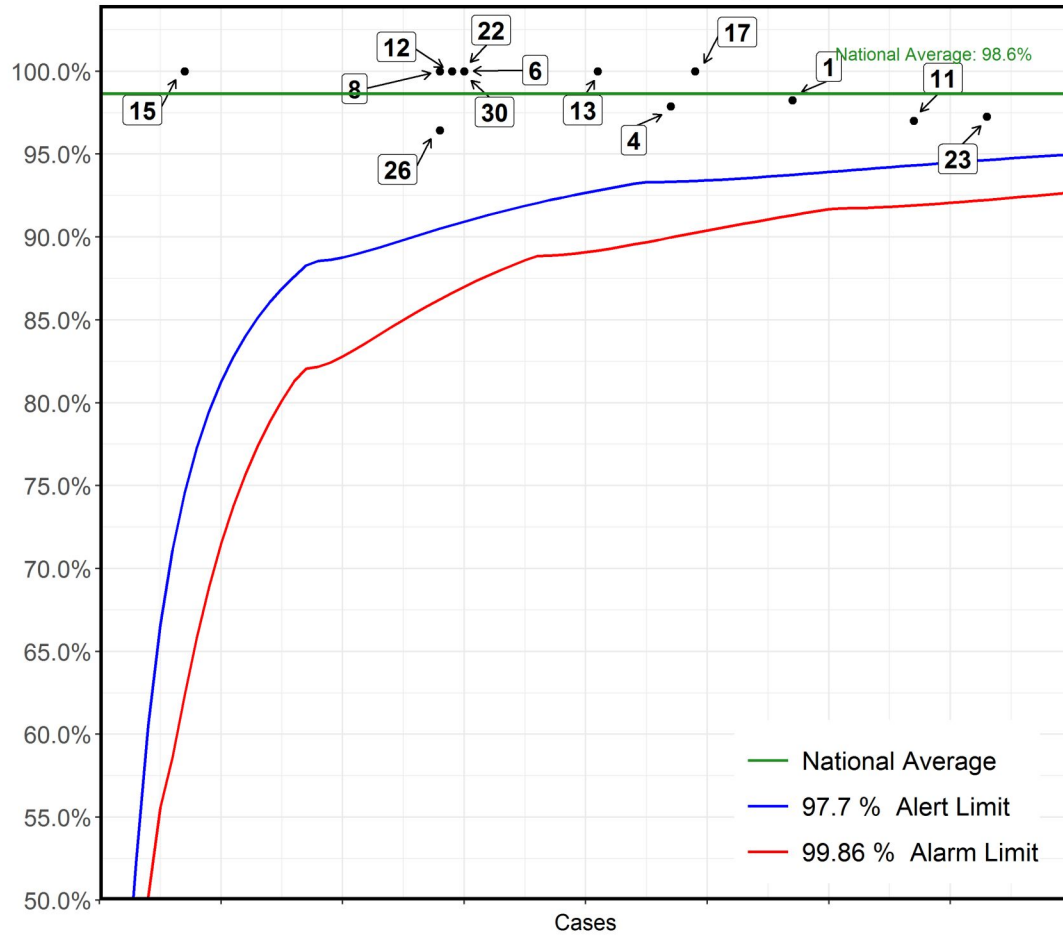
**Surgical: Atrial septal defect (ASD) closure - surgical
2016-19 - Paediatric cases only**



No	Hospital Name	Survival 30d
11	London Great Ormond Street Hospital for Children	100%
4	Birmingham Children's Hospital	100%
8	Newcastle Freeman Hospital	100%
30	Southampton Wessex Cardiothoracic Centre	100%
6	Bristol Royal Hospital For Children	100%
13	London Evelina London Children's Hospital	100%
1	Liverpool Alder Hey Hospital	100%
12	Leicester Glenfield Hospital	100%
17	Leeds General Infirmary	100%
*26	Glasgow Royal Hospital for Children	97%
22	London Royal Brompton Hospital	100%
23	Dublin Our Lady's Children's Hospital	100%
15	London Harley Street Clinic	100%

*This Funnel plot includes 1 patient(s) at least from this centre who had 2 procedures within the same 30 day time period.
The procedure for this patient has only been counted once in this display with respect to life status for statistical reasons to ensure the patient is not counted as alive or deceased twice over.

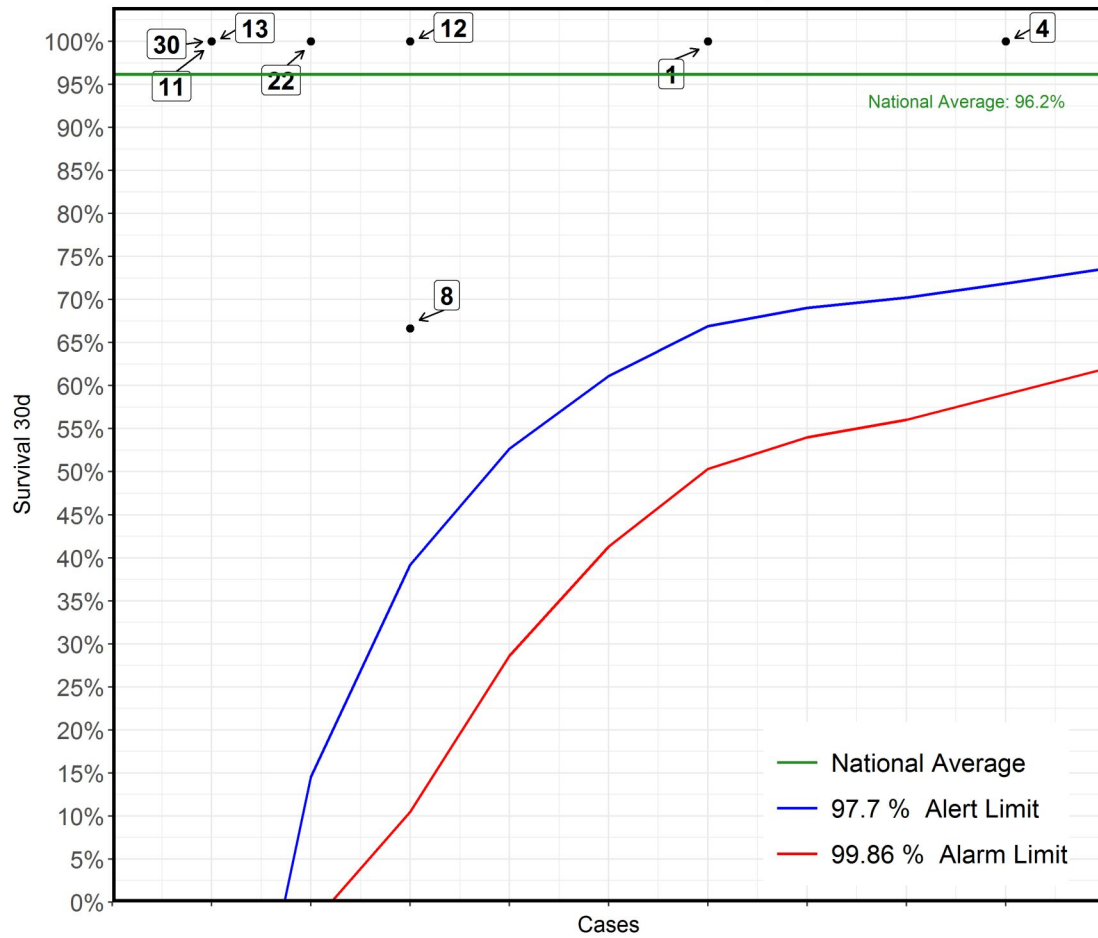
**Surgical: Complete atrioventricular septal defect (AVSD) repair
2016-19 - Paediatric cases only**



No	Hospital Name	Survival 30d
23	Dublin Our Lady's Children's Hospital	97%
11	London Great Ormond Street Hospital for Children	97%
1	Liverpool Alder Hey Hospital	98%
17	Leeds General Infirmary	100%
4	Birmingham Children's Hospital	98%
13	London Evelina London Children's Hospital	100%
6	Bristol Royal Hospital For Children	100%
22	London Royal Brompton Hospital	100%
30	Southampton Wessex Cardiothoracic Centre	100%
*12	Leicester Glenfield Hospital	100%
8	Newcastle Freeman Hospital	100%
26	Glasgow Royal Hospital for Children	96%
15	London Harley Street Clinic	100%

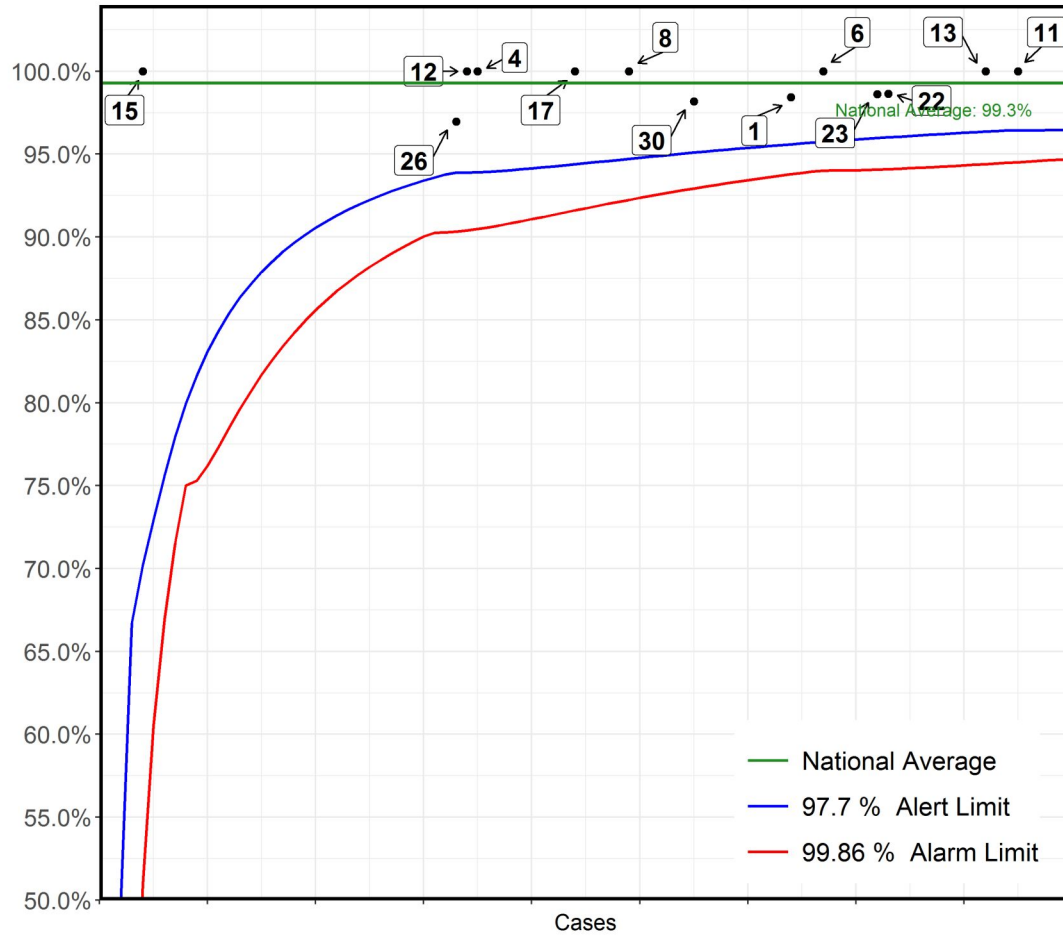
*This Funnel plot includes 1 patient(s) at least from this centre who had 2 procedures within the same 30 day time period. The procedure for this patient has only been counted once in this display with respect to life status for statistical reasons to ensure the patient is not counted as alive or deceased twice over.

**Surgical: Double Switch or Rastelli-Senning repair of ccTGA
2016-19 - Paediatric cases only**



No	Hospital Name	Survival 30d
4	Birmingham Children's Hospital	100%
1	Liverpool Alder Hey Hospital	100%
8	Newcastle Freeman Hospital	67%
12	Leicester Glenfield Hospital	100%
22	London Royal Brompton Hospital	100%
11	London Great Ormond Street Hospital for Children	100%
13	London Evelina London Children's Hospital	100%
30	Southampton Wessex Cardiothoracic Centre	100%

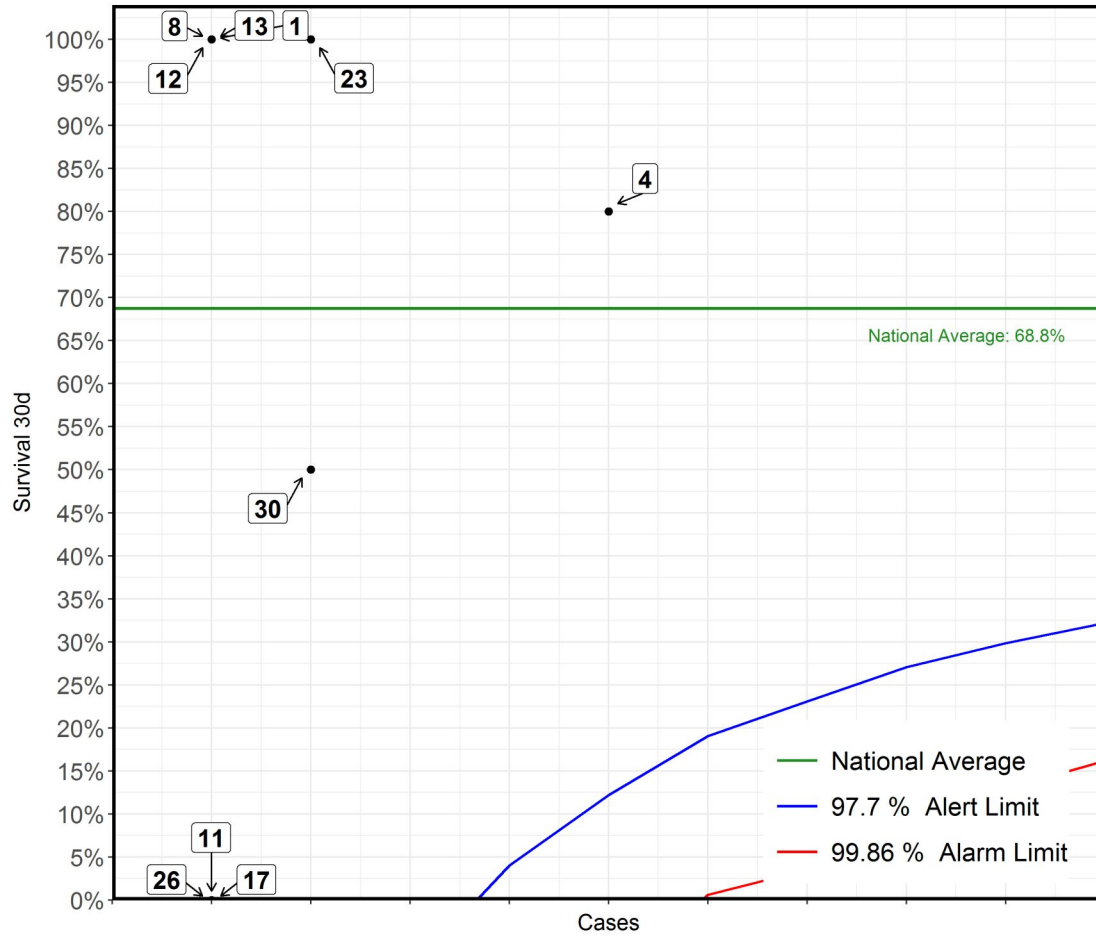
**Surgical: Isolated coarctation/hypoplasia of aorta repair
2016-19 - Paediatric cases only**



No	Hospital Name	Survival 30d
*11	London Great Ormond Street Hospital for Children	100%
*13	London Evelina London Children's Hospital	100%
22	London Royal Brompton Hospital	99%
23	Dublin Our Lady's Children's Hospital	99%
6	Bristol Royal Hospital For Children	100%
*1	Liverpool Alder Hey Hospital	98%
*30	Southampton Wessex Cardiothoracic Centre	98%
*8	Newcastle Freeman Hospital	100%
17	Leeds General Infirmary	100%
4	Birmingham Children's Hospital	100%
*12	Leicester Glenfield Hospital	100%
26	Glasgow Royal Hospital for Children	97%
15	London Harley Street Clinic	100%

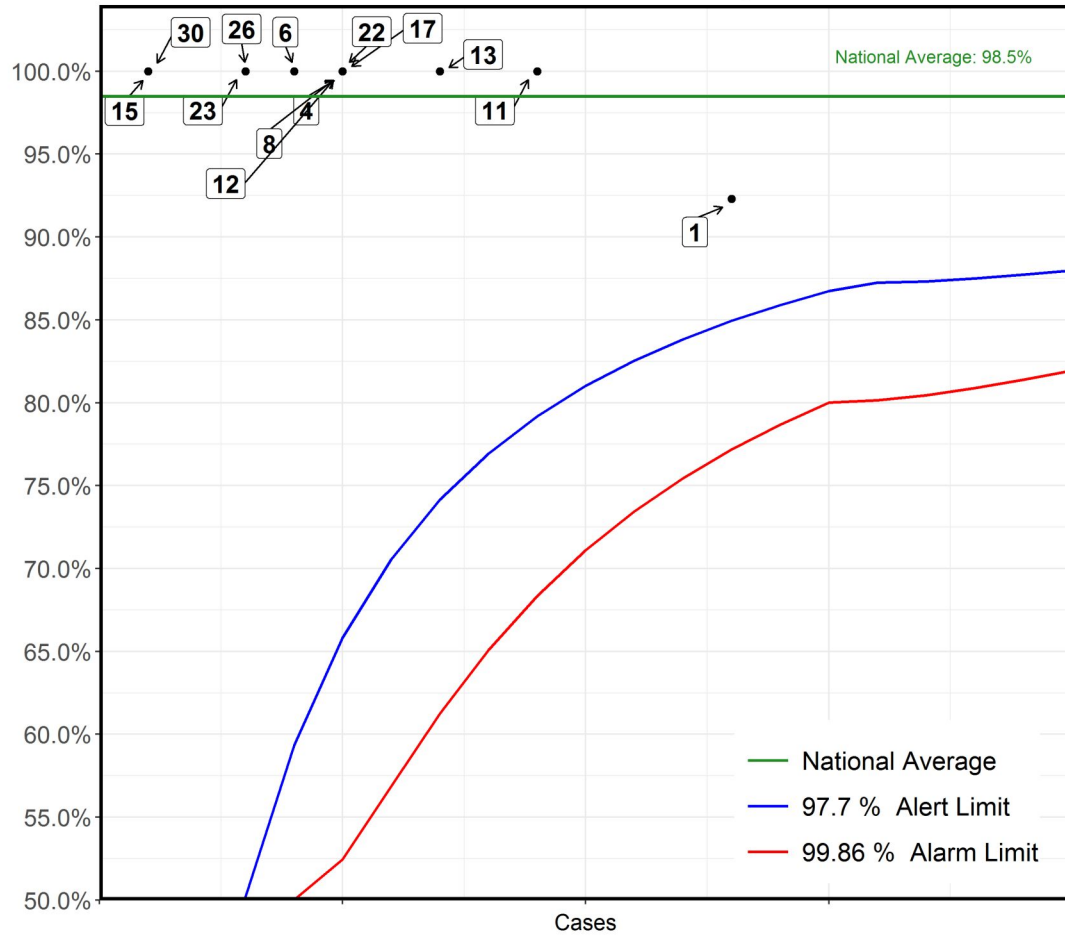
*This Funnel plot includes 1 patient(s) at least from this centre who had 2 procedures within the same 30 day time period. The procedure for this patient has only been counted once in this display with respect to life status for statistical reasons to ensure the patient is not counted as alive or deceased twice over.

**Surgical: Common arterial trunk (truncus arteriosus) and aorta arch repair
2016-19 - Paediatric cases only**



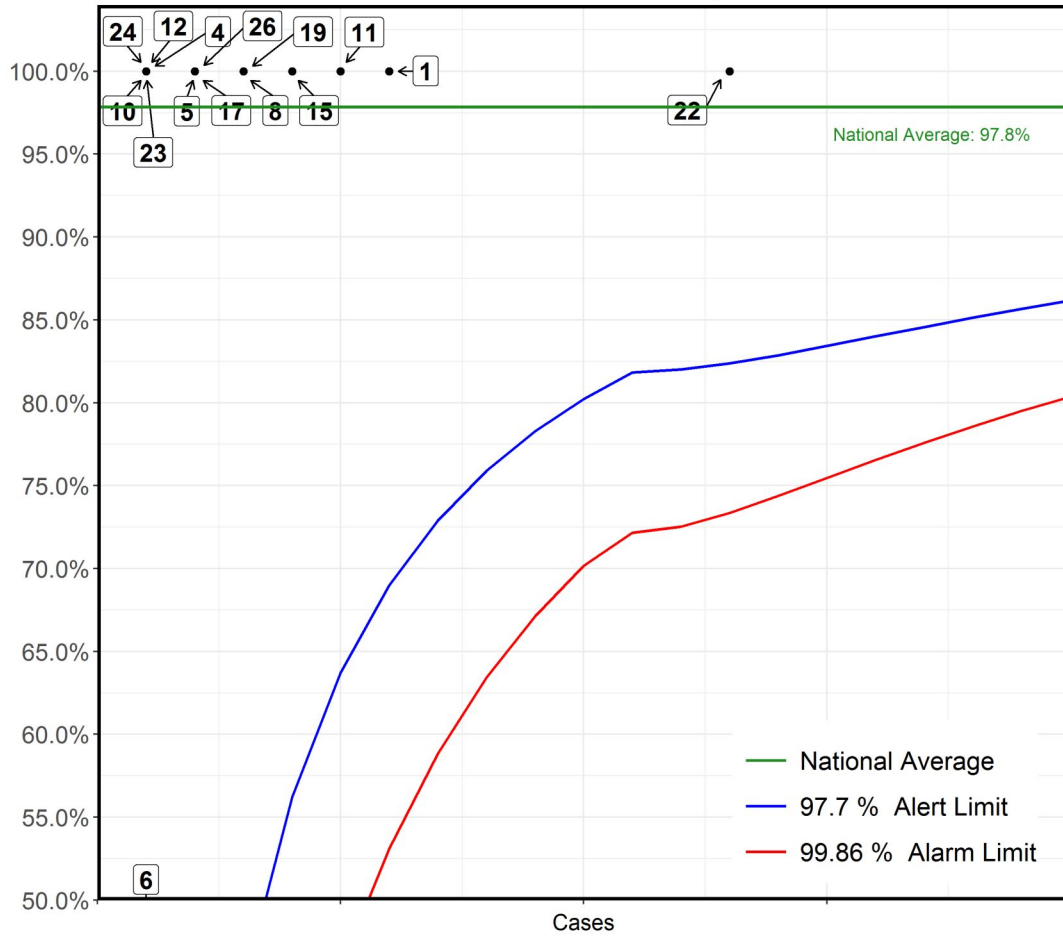
No	Hospital Name	Survival 30d
4	Birmingham Children's Hospital	80%
23	Dublin Our Lady's Children's Hospital	100%
30	Southampton Wessex Cardiothoracic Centre	50%
1	Liverpool Alder Hey Hospital	100%
8	Newcastle Freeman Hospital	100%
11	London Great Ormond Street Hospital for Children	0%
12	Leicester Glenfield Hospital	100%
13	London Evelina London Children's Hospital	100%
17	Leeds General Infirmary	0%
26	Glasgow Royal Hospital for Children	0%

**Surgical: Common arterial trunk (truncus arteriosus) repair
2016-19 - Paediatric cases only**



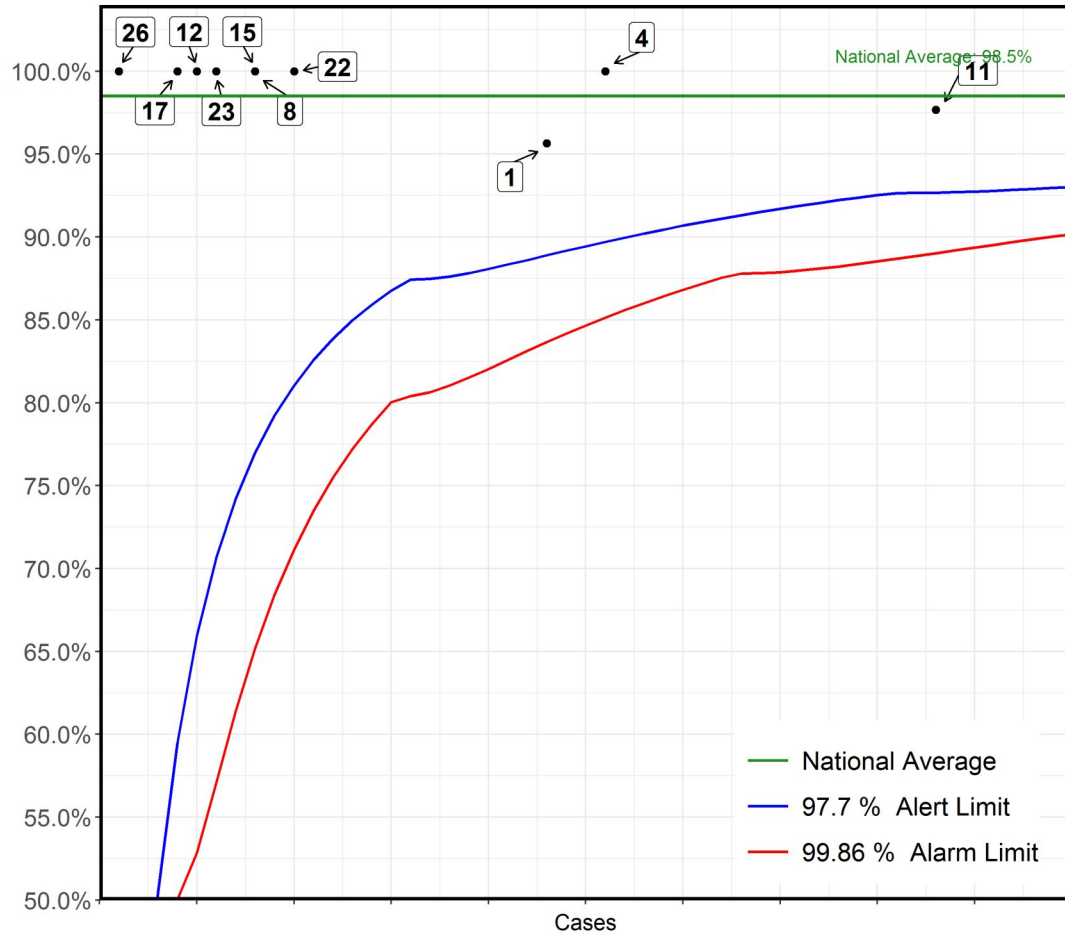
No	Hospital Name	Survival 30d
1	Liverpool Alder Hey Hospital	92%
11	London Great Ormond Street Hospital for Children	100%
13	London Evelina London Children's Hospital	100%
4	Birmingham Children's Hospital	100%
8	Newcastle Freeman Hospital	100%
12	Leicester Glenfield Hospital	100%
17	Leeds General Infirmary	100%
22	London Royal Brompton Hospital	100%
6	Bristol Royal Hospital For Children	100%
23	Dublin Our Lady's Children's Hospital	100%
26	Glasgow Royal Hospital for Children	100%
15	London Harley Street Clinic	100%
30	Southampton Wessex Cardiothoracic Centre	100%

**Surgical: Replacement of cardiac conduit
2016-19 - ACHD cases only**



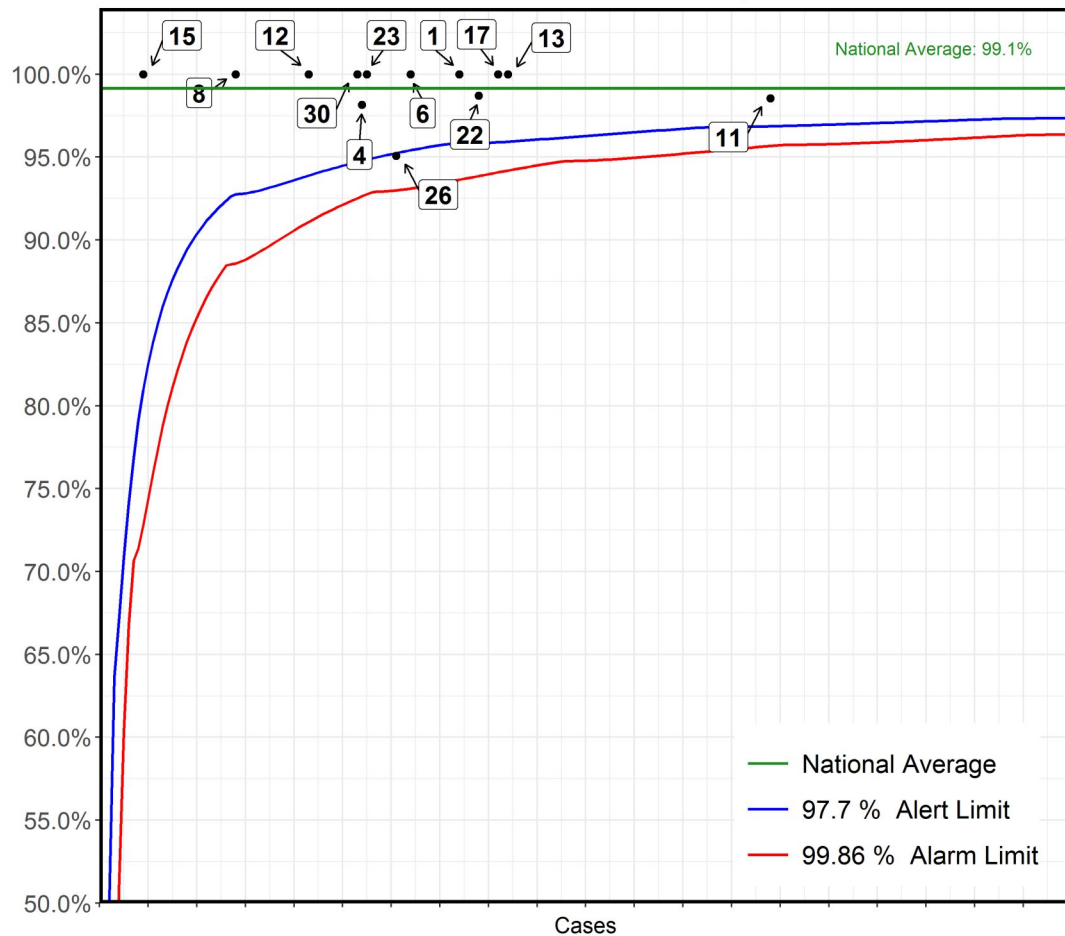
No	Hospital Name	Survival 30d
22	London Royal Brompton Hospital	100%
1	Liverpool Alder Hey Hospital	100%
11	London Great Ormond Street Hospital for Children	100%
15	London Harley Street Clinic	100%
8	Newcastle Freeman Hospital	100%
19	Manchester Royal Infirmary	100%
5	Liverpool Heart and Chest Hospital	100%
17	Leeds General Infirmary	100%
26	Glasgow Royal Hospital for Children	100%
4	Birmingham Children's Hospital	100%
6	Bristol Royal Hospital For Children	0%
10	Glasgow Golden Jubilee National Hospital	100%
12	Leicester Glenfield Hospital	100%
23	Dublin Our Lady's Children's Hospital	100%
24	Birmingham Queen Elizabeth Hospital	100%

**Surgical: Replacement of cardiac conduit
2016-19 - Paediatric cases only**



No	Hospital Name	Survival 30d
11	London Great Ormond Street Hospital for Children	98%
4	Birmingham Children's Hospital	100%
1	Liverpool Alder Hey Hospital	96%
22	London Royal Brompton Hospital	100%
8	Newcastle Freeman Hospital	100%
15	London Harley Street Clinic	100%
23	Dublin Our Lady's Children's Hospital	100%
12	Leicester Glenfield Hospital	100%
17	Leeds General Infirmary	100%
26	Glasgow Royal Hospital for Children	100%

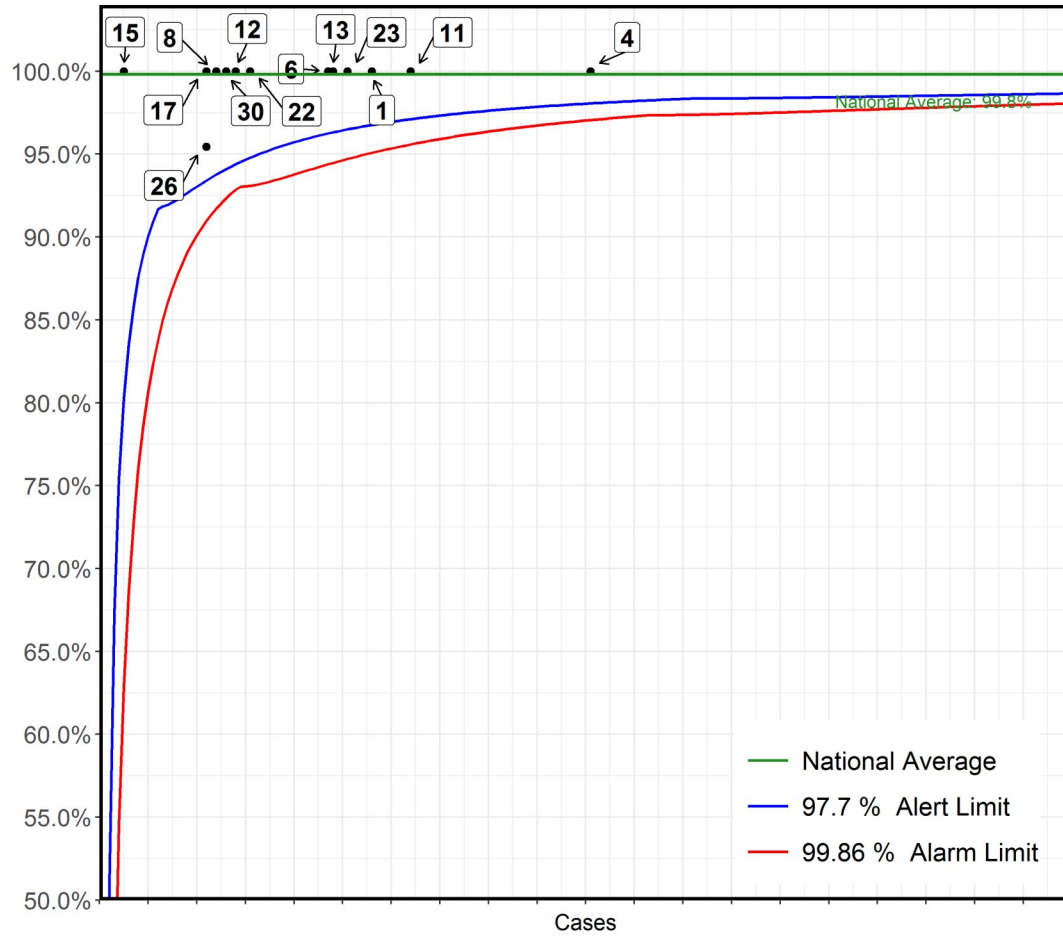
**Surgical: Tetralogy of Fallot and Fallot-type double outlet right ventricle repair
2016-19 - Paediatric cases only**



No	Hospital Name	Survival 30d
11	London Great Ormond Street Hospital for Children	99%
13	London Evelina London Children's Hospital	100%
17	Leeds General Infirmary	100%
*22	London Royal Brompton Hospital	99%
1	Liverpool Alder Hey Hospital	100%
6	Bristol Royal Hospital For Children	100%
26	Glasgow Royal Hospital for Children	95%
23	Dublin Our Lady's Children's Hospital	100%
4	Birmingham Children's Hospital	98%
30	Southampton Wessex Cardiothoracic Centre	100%
12	Leicester Glenfield Hospital	100%
8	Newcastle Freeman Hospital	100%
15	London Harley Street Clinic	100%

*This Funnel plot includes 1 patient(s) at least from this centre who had 2 procedures within the same 30 day time period.
The procedure for this patient has only been counted once in this display with respect to life status for statistical reasons to ensure the patient is not counted as alive or deceased twice over.

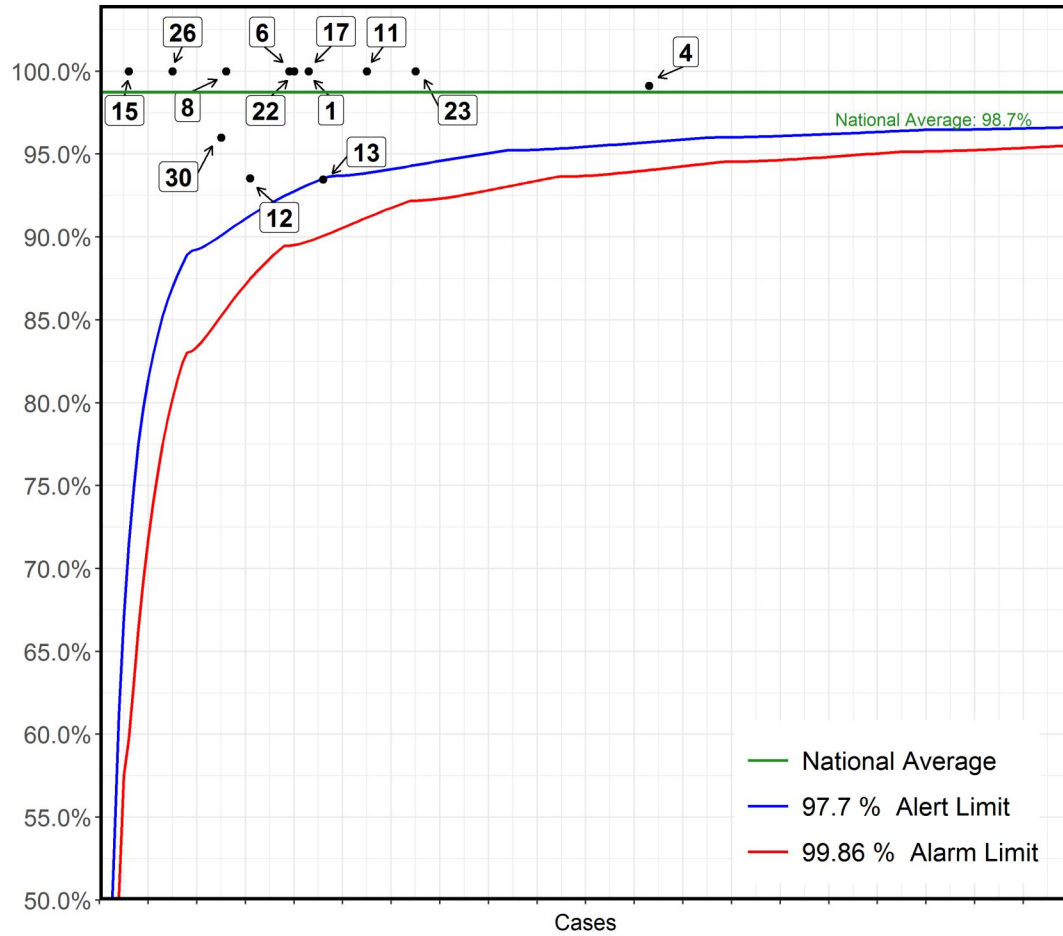
**Surgical: Fontan or Total Cavopulmonary Connection (TCPC)
2016-19 - Paediatric cases only**



No	Hospital Name	Survival 30d
4	Birmingham Children's Hospital	100%
*11	London Great Ormond Street Hospital for Children	100%
1	Liverpool Alder Hey Hospital	100%
23	Dublin Our Lady's Children's Hospital	100%
13	London Evelina London Children's Hospital	100%
6	Bristol Royal Hospital For Children	100%
*22	London Royal Brompton Hospital	100%
12	Leicester Glenfield Hospital	100%
30	Southampton Wessex Cardiothoracic Centre	100%
8	Newcastle Freeman Hospital	100%
17	Leeds General Infirmary	100%
26	Glasgow Royal Hospital for Children	95%
15	London Harley Street Clinic	100%

*This Funnel plot includes 1 patient(s) at least from this centre who had 2 procedures within the same 30 day time period. The procedure for this patient has only been counted once in this display with respect to life status for statistical reasons to ensure the patient is not counted as alive or deceased twice over.

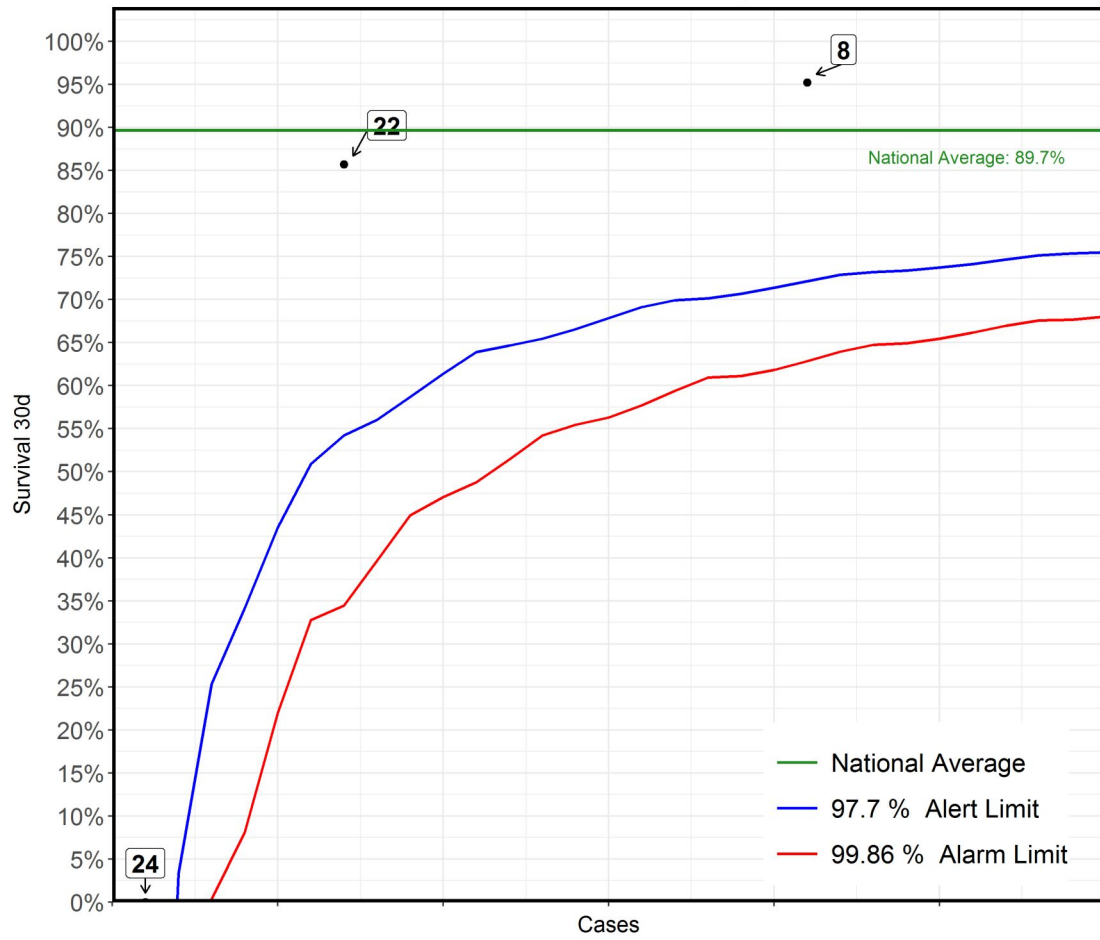
**Surgical: Glenn (Cavopulmonary (CP) shunt)
2016-19 - Paediatric cases only**



No	Hospital Name	Survival 30d
4	Birmingham Children's Hospital	99%
23	Dublin Our Lady's Children's Hospital	100%
11	London Great Ormond Street Hospital for Children	100%
*13	London Evelina London Children's Hospital	93%
*1	Liverpool Alder Hey Hospital	100%
*17	Leeds General Infirmary	100%
22	London Royal Brompton Hospital	100%
*6	Bristol Royal Hospital For Children	100%
*12	Leicester Glenfield Hospital	94%
*8	Newcastle Freeman Hospital	100%
30	Southampton Wessex Cardiothoracic Centre	96%
26	Glasgow Royal Hospital for Children	100%
15	London Harley Street Clinic	100%

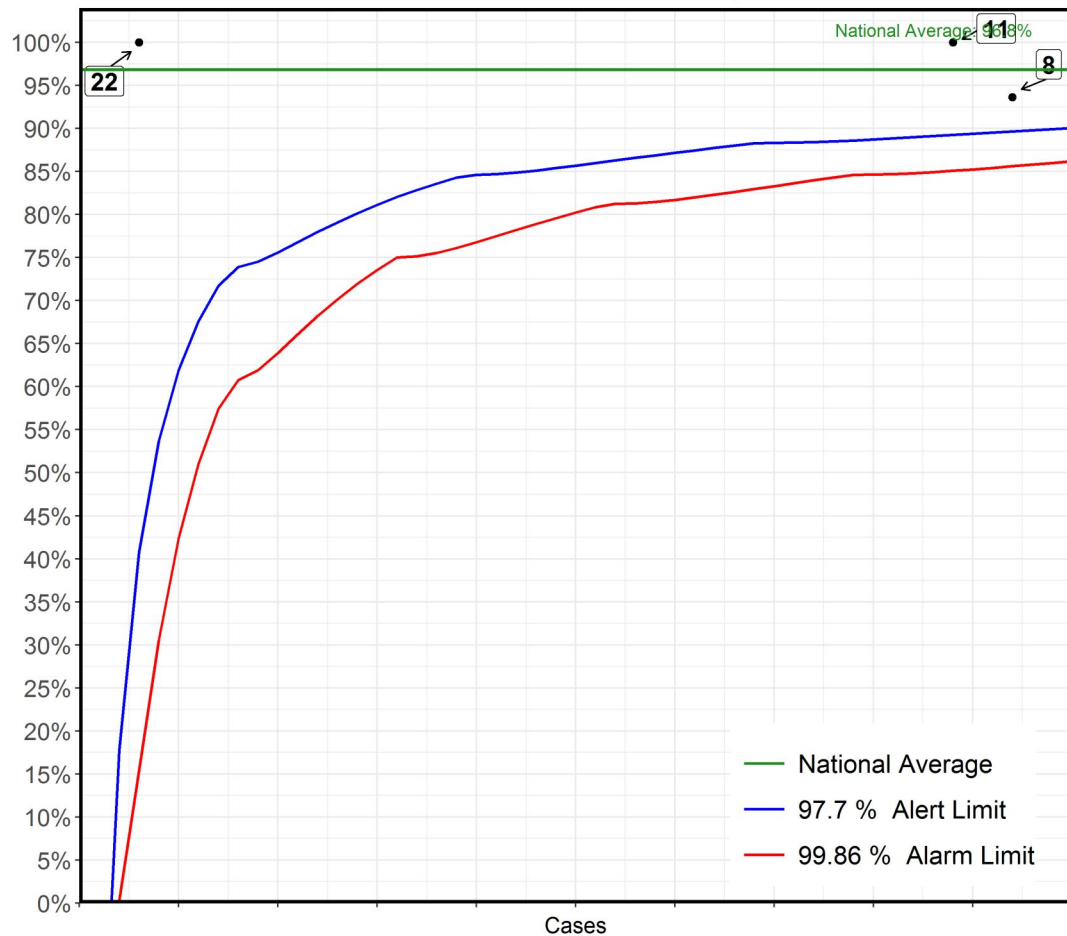
*This Funnel plot includes 1 patient(s) at least from this centre who had 2 procedures within the same 30 day time period. The procedure for this patient has only been counted once in this display with respect to life status for statistical reasons to ensure the patient is not counted as alive or deceased twice over.

**Surgical: Heart transplant
2016-19 - ACHD cases only**



No	Hospital Name	Survival 30d
8	Newcastle Freeman Hospital	95%
22	London Royal Brompton Hospital	86%
24	Birmingham Queen Elizabeth Hospital	0%

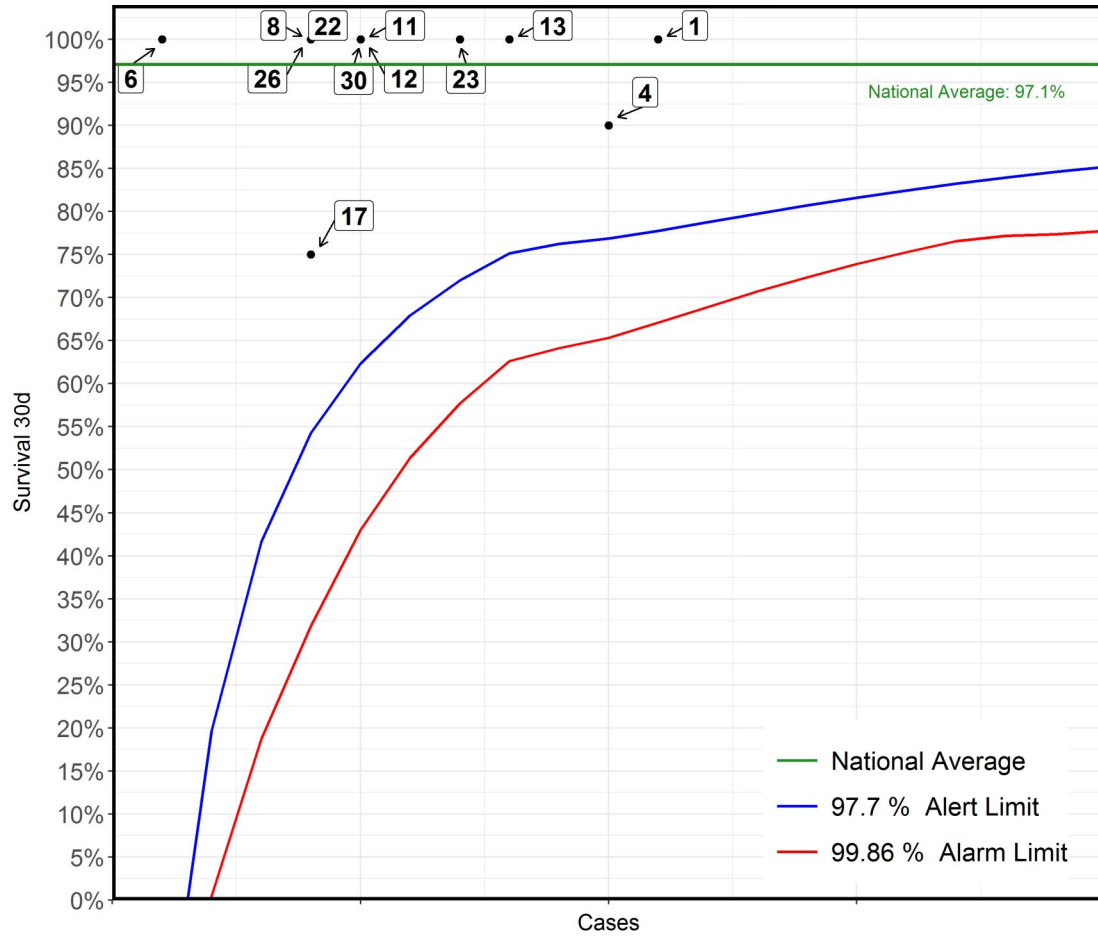
**Surgical: Heart transplant
2016-19 - Paediatric cases only**



No	Hospital Name	Survival 30d
8	Newcastle Freeman Hospital	94%
11	London Great Ormond Street Hospital for Children	100%
*22	London Royal Brompton Hospital	100%

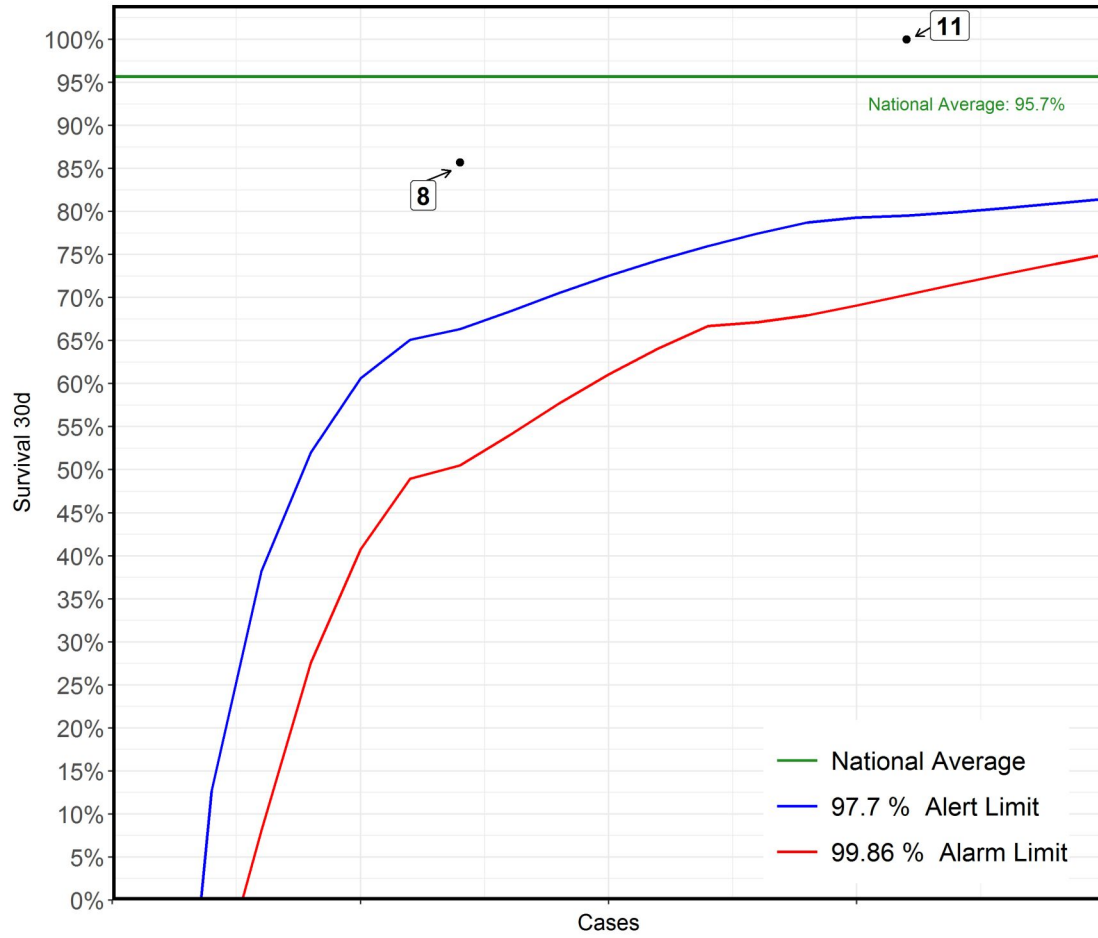
*This Funnel plot includes 1 patient(s) at least from this centre who had 2 procedures within the same 30 day time period. The procedure for this patient has only been counted once in this display with respect to life status for statistical reasons to ensure the patient is not counted as alive or deceased twice over.

**Surgical: Interrupted aortic arch repair
2016-19 - Paediatric cases only**



No	Hospital Name	Survival 30d
1	Liverpool Alder Hey Hospital	100%
4	Birmingham Children's Hospital	90%
13	London Evelina London Children's Hospital	100%
23	Dublin Our Lady's Children's Hospital	100%
11	London Great Ormond Street Hospital for Children	100%
12	Leicester Glenfield Hospital	100%
22	London Royal Brompton Hospital	100%
30	Southampton Wessex Cardiothoracic Centre	100%
8	Newcastle Freeman Hospital	100%
17	Leeds General Infirmary	75%
26	Glasgow Royal Hospital for Children	100%
6	Bristol Royal Hospital For Children	100%

**Surgical: Lung transplant (includes heart and lung transplant)
2016-19 - Paediatric cases only**



No	Hospital Name	Survival 30d
11	London Great Ormond Street Hospital for Children	100%
8	Newcastle Freeman Hospital	86%